

RETAIL SPACE AVAILABE IN DOWNTOWN WESTFIELD, NJ

161 & 167 E BROAD STREET | 2,954 & 5,812 SF AVAILABLE



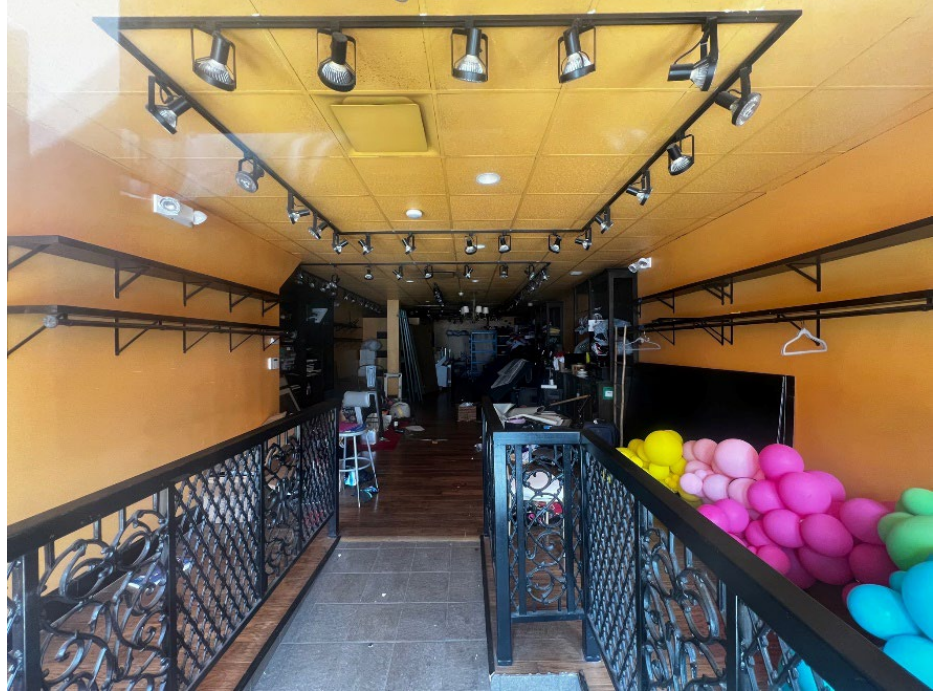
- 161 E Broad Street - 2,954 SF formerly Francesca's
- 167 E Broad - 5,812 SF currently The Selfie Station, divisions considered
- Premiere Boutique Retail Space located at the base of the historic James Ward Mansion & Rita Ward Building
- Join the busiest block in affluent Westfield, NJ
- Asking Rent Upon Request
- 22,586 VPD on East Broad Street

NEIGHBORING TENANTS

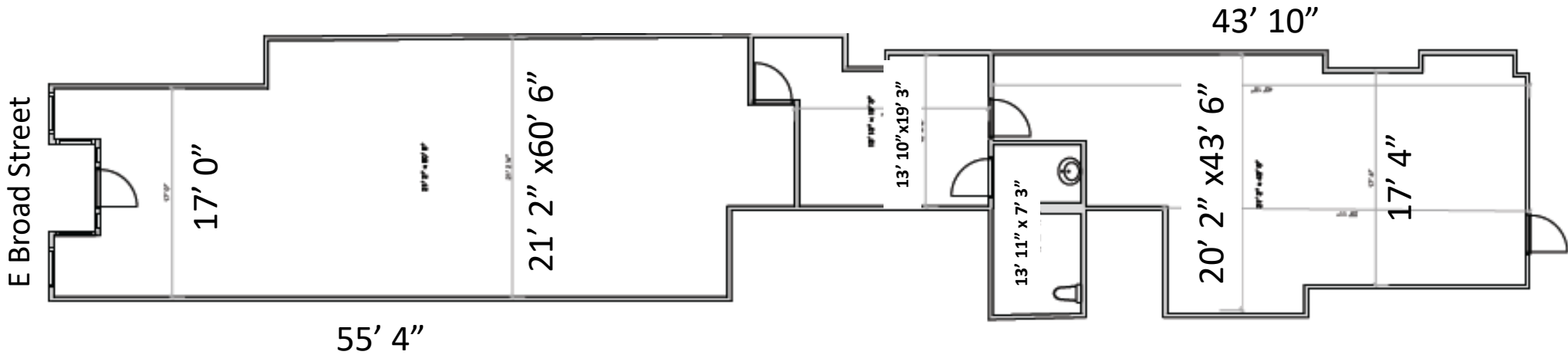


RETAIL SPACE IN DOWNTOWN WESTFIELD

161 E BROAD STREET | 2,954 AVAILABLE

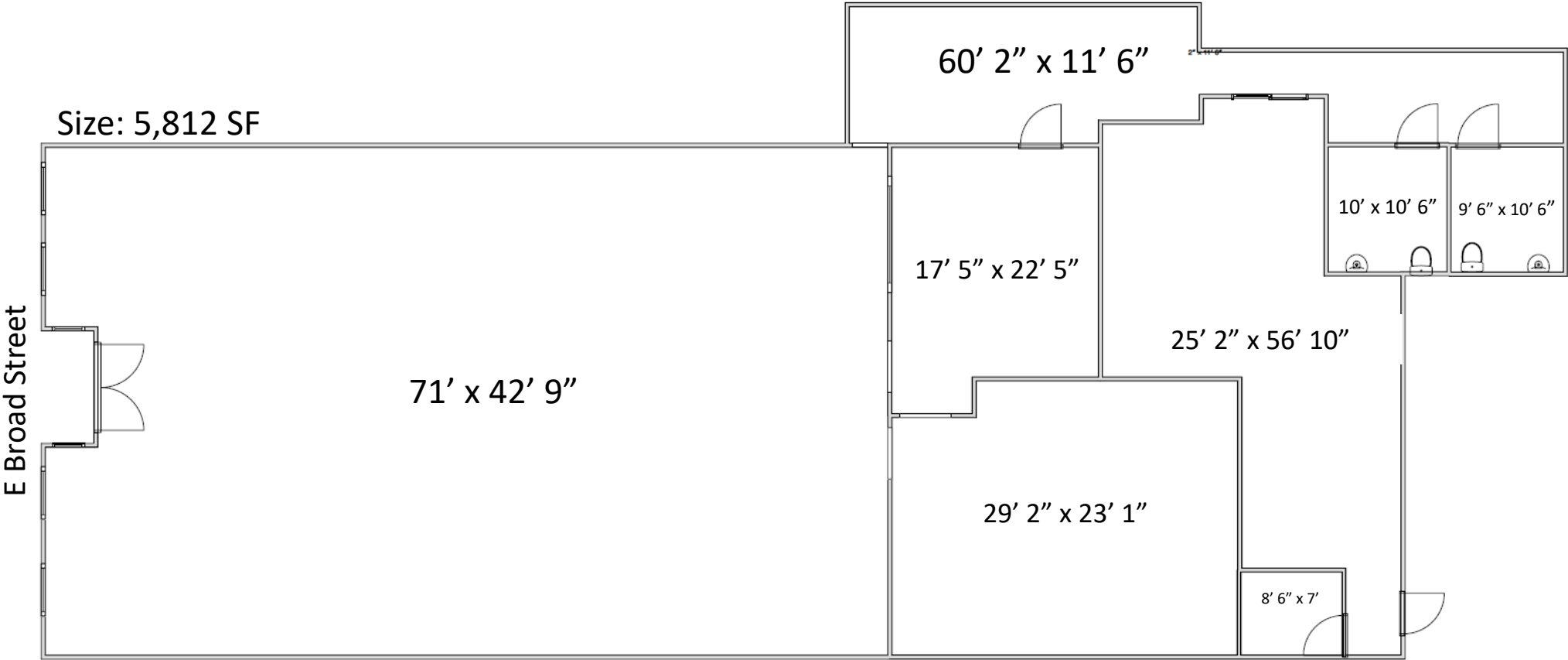


Size: 2,954 SF



RETAIL SPACE IN DOWNTOWN WESTFIELD

167 E BROAD STREET | 5,812 SF AVAILABLE



BOUTIQUE RETAIL SPACES IN DOWNTOWN WESTFIELD

NEIGHBORHOOD PHOTOS



161 & 167 E BROAD STREET | 1,400 & 5,000 SF AVAILABLE

RETAIL MAP WESTFIELD, NJ



AVAILABLE FOR LEASE

DEMOGRAPHICS	2021	2025
POPULATION	17,120	17,298
HOUSEHOLDS	5,951	6,002
HOUSEHOLD INCOME	\$229,200	\$246,680



22,586 VPD

David Townes / Direct: +1 201 508 5268 / Cell: +1 917 993 5515 / david.townes@cushwake.com
 Alana Friedman / Direct: +1 201 508 5258 / Cell: +1 201 741 0990 / alana.friedman@cushwake.com

CUSHMAN & WAKEFIELD
 One Meadowlands Plaza, Floor 7
 East Rutherford, NJ 07073
www.cushmanwakefield.com