

47529-47669 AVANTE DRIVE  
WIXOM, MICHIGAN

INDUSTRIAL FOR LEASE  
2,000 Square Feet Available



**SIGNATURE  
ASSOCIATES**  
KNOW SIGNATURE | KNOW RESULTS

**CLOSE TO I-96**



## PROPERTY FEATURES

- (1) 2,000 square feet unit available
- 500 square feet of office per unit
- 16' clear height
- (1) 12x14 grade level door per unit
- Zoned Light Industrial
- Property is located west off of Beck Road
- (1) office, open area, and restroom
- Air conditioning in office



For more information, please contact:

**JEFF LEMANSKI**  
(248) 359 0641  
jlemanski@signatureassociates.com

**SIGNATURE ASSOCIATES**  
One Towne Square, Suite 1200  
Southfield, MI 48076  
www.signatureassociates.com

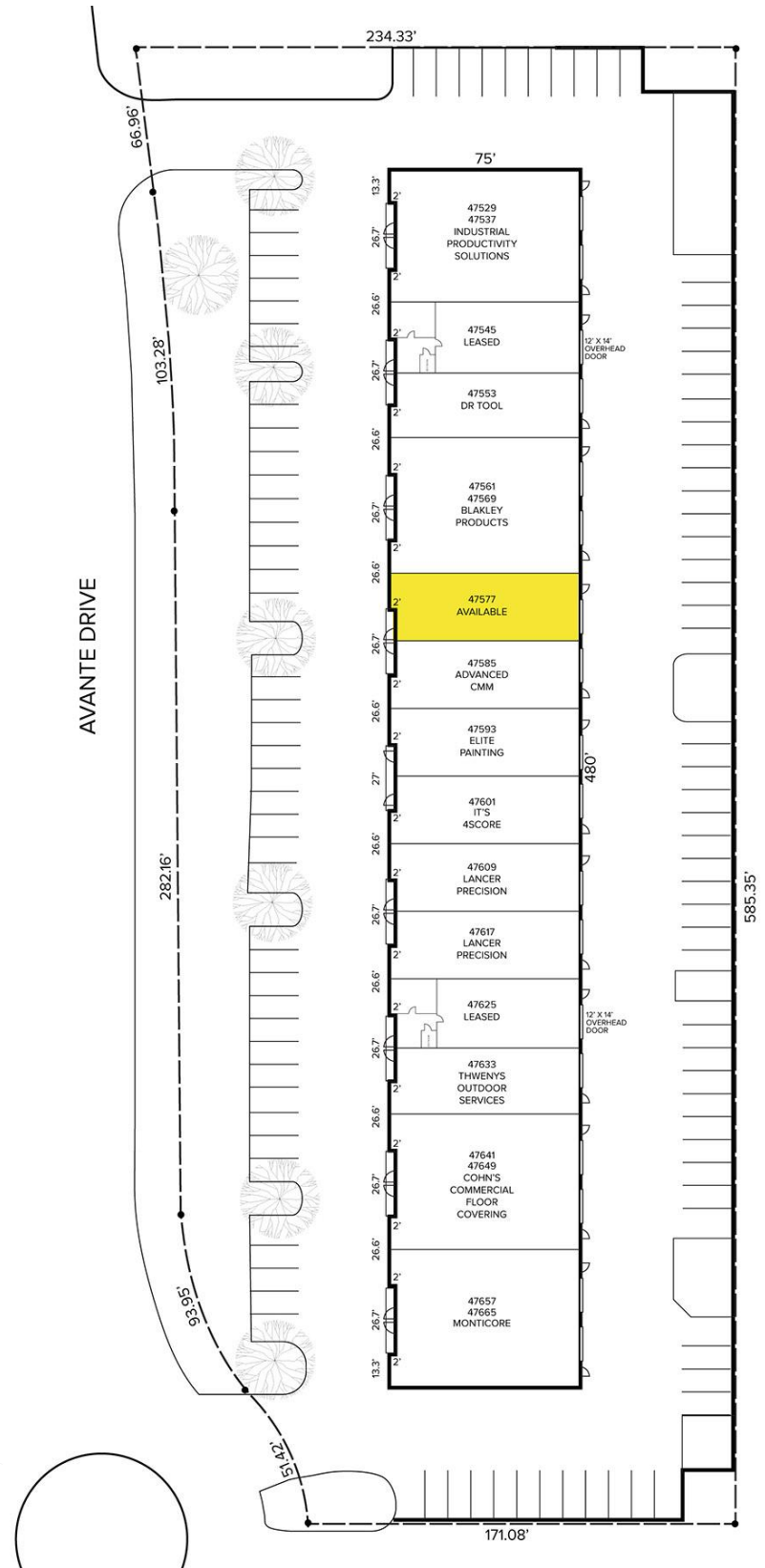
# 47529-47669 Avante Drive – Wixom, Michigan

## Industrial For Lease

2,000  
Square Feet  
AVAILABLE

### Site Plan

AVAILABILITY			
UNIT	TOTAL SF	OFFICE SF	RATE
47577	2,000	500	\$12.00 GROSS



For more information, please contact:

**JEFF LEMANSKI**  
(248) 359 0641  
jlemanski@signatureassociates.com

**SIGNATURE ASSOCIATES**  
One Towne Square, Suite 1200  
Southfield, MI 48076  
www.signatureassociates.com

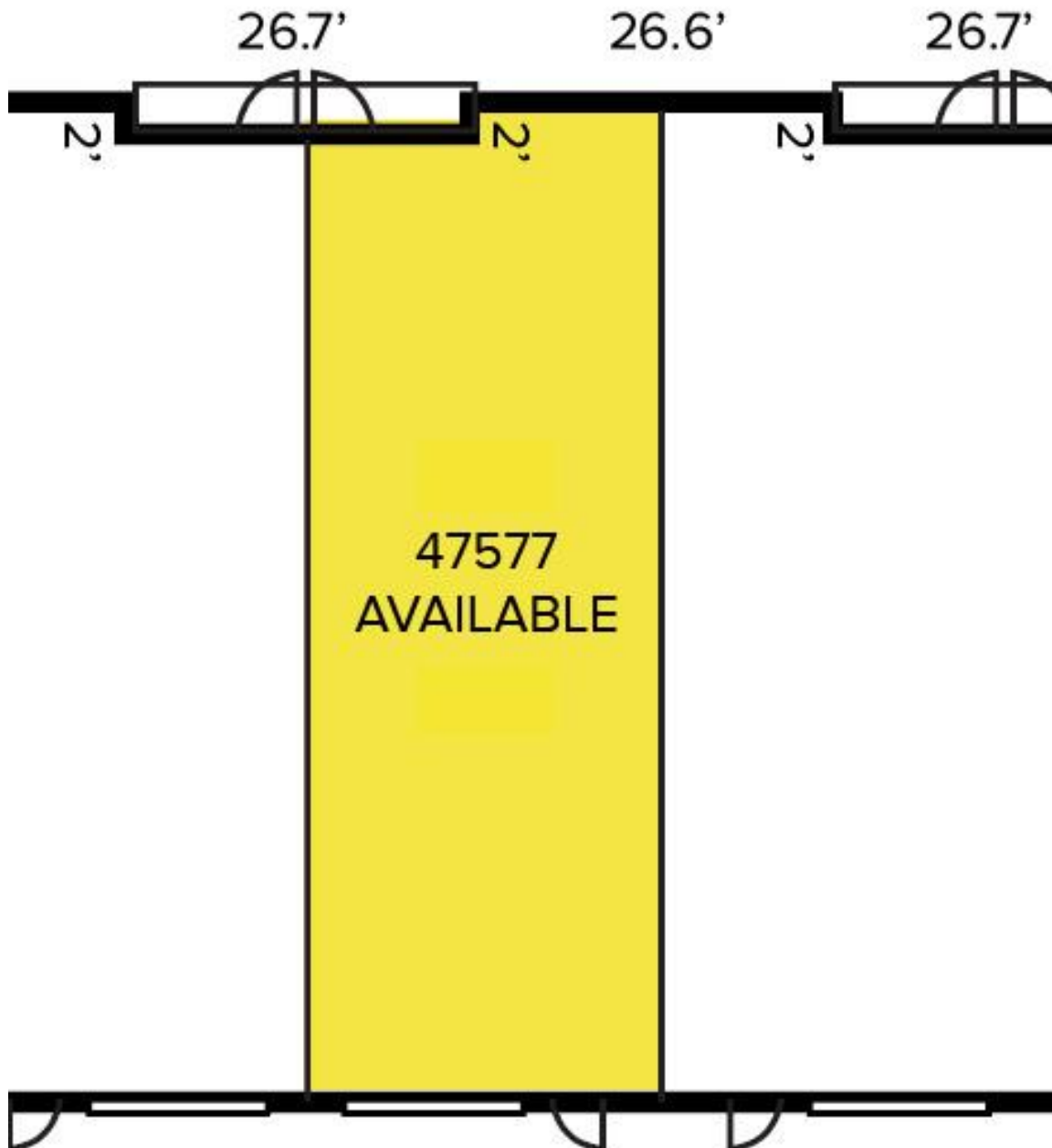
# 47529-47669 Avante Drive – Wixom, Michigan

## Industrial For Lease

2,000  
Square Feet  
AVAILABLE

### Floor Plan

AVAILABILITY			
UNIT	TOTAL SF	OFFICE SF	RATE
47577	2,000	500	\$12.00 GROSS



For more information, please contact:

**JEFF LEMANSKI**  
(248) 359 0641  
jlemanski@signatureassociates.com

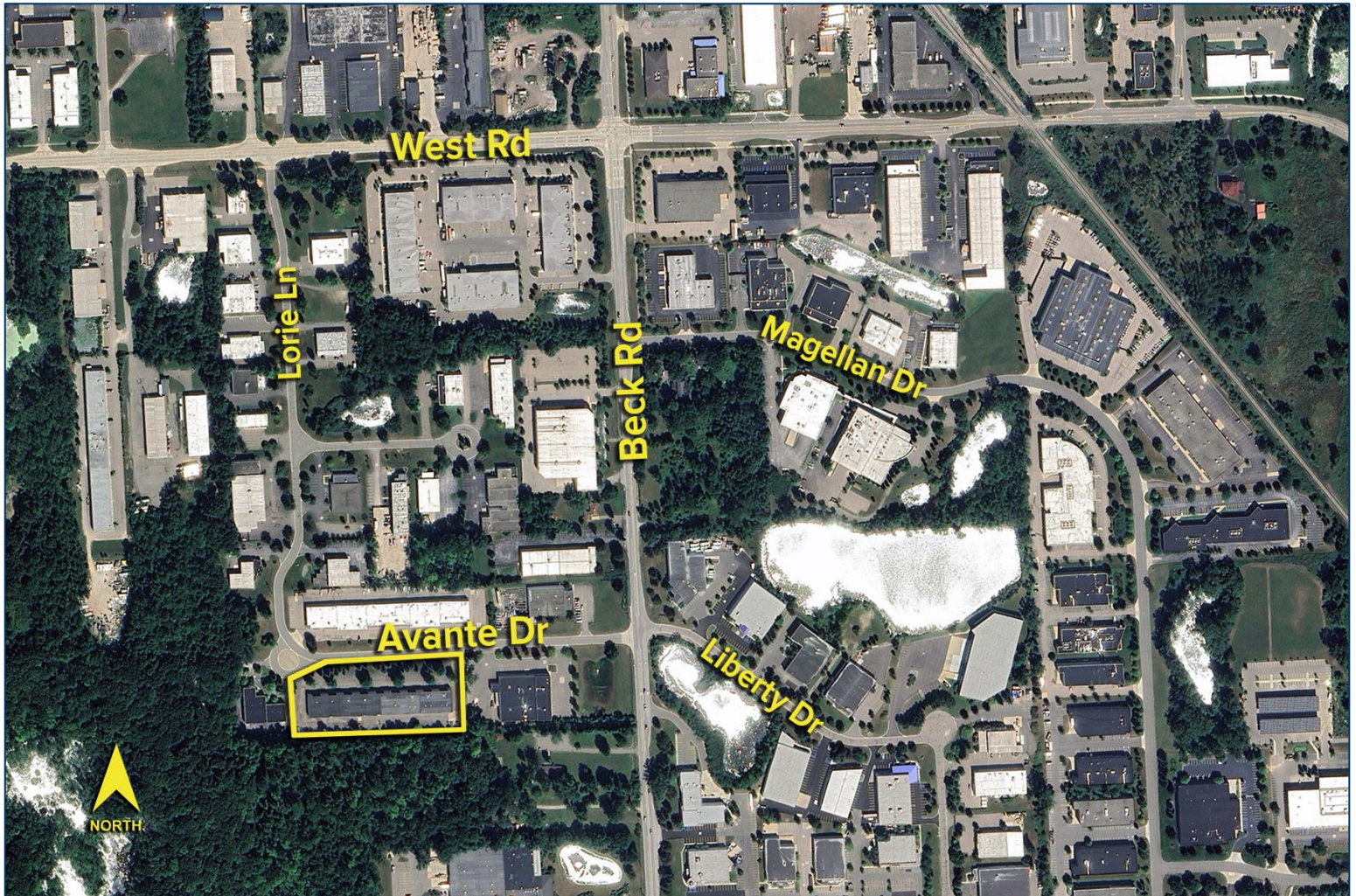
**SIGNATURE ASSOCIATES**  
One Towne Square, Suite 1200  
Southfield, MI 48076  
www.signatureassociates.com

# 47529-47669 Avante Drive – Wixom, Michigan

Industrial For Lease

2,000  
Square Feet  
AVAILABLE

Aerial



For more information, please contact:

**JEFF LEMANSKI**

(248) 359 0641

[jlemanski@signatureassociates.com](mailto:jlemanski@signatureassociates.com)

**SIGNATURE ASSOCIATES**

One Towne Square, Suite 1200

Southfield, MI 48076

[www.signatureassociates.com](http://www.signatureassociates.com)