

FOR LEASE OFFICE SPACE

14 Santee Place, Suite #104
Melbourne, FL 32940



LEASE OVERVIEW

LEASE RATE	\$10.50/sf \$ 6.50/sf pass throughs
LEASE TYPE	Full Service Includes CAM, water and electric
SF AVAILABLE	1,992± sf
SPACE TYPE	Fully built-out office space
SALES TAX:	Florida sales tax will be added

PROPERTY

Light and bright office suite!

- 4 private offices
- Conference room
- Reception
- Open work area
- Ample parking
- Common area restrooms

LOCATION

Santee Place is west of the Santee Blvd. & N. Wickham Rd. intersection in the heart of the Santee Community.

Nearest major highways: US Hwy 1, Pineda Cswy (SR 404) and I-95.



LIGHTLE
BECKNER
ROBISON

Brian Fernandez
Office and Medical Properties

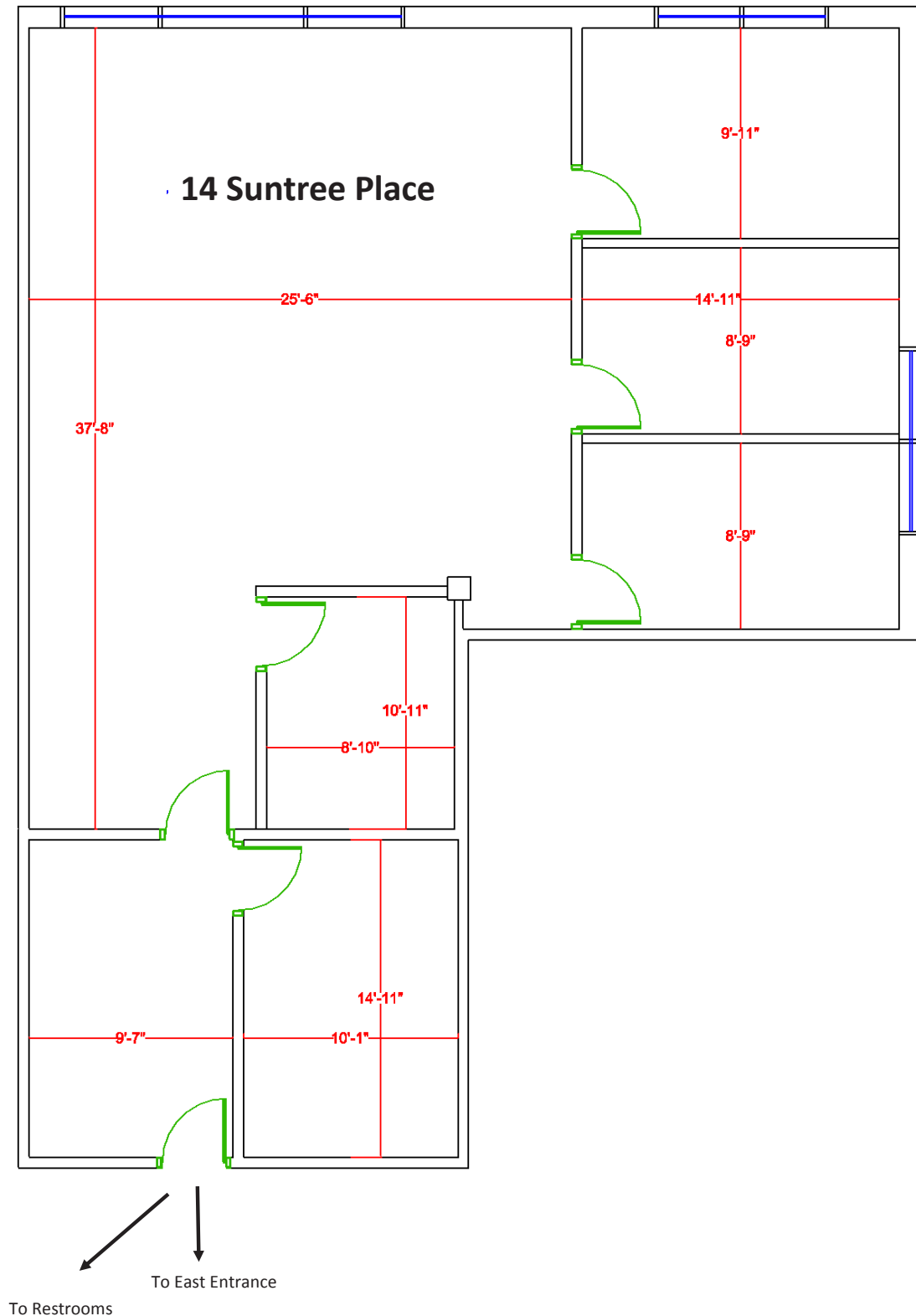
(321) 722-0707 x21
BrianFernandez@TeamLBR.com

www.TeamLBR.com

© Lightle Beckner Robison, Inc.
All Rights Reserved

70 W. Hibiscus Blvd. · Melbourne, Florida 32901 · (321) 722-0581 fax

*Information contained herein has been obtained from others and considered to be reliable;
However, a purchaser or lessee is expected to verify all information to his/her own satisfaction.*



**LIGHTLE
BECKNER
ROBISON**

Brian Fernandez
Office and Medical Properties

(321) 722-0707 x21
BrianFernandez@TeamLBR.com

www.TeamLBR.com

70 W. Hibiscus Blvd. · Melbourne, Florida 32901 · (321) 722-0581 fax

© Lightle Beckner Robison, Inc.
All Rights Reserved

*Information contained herein has been obtained from others and considered to be reliable;
However, a purchaser or lessee is expected to verify all information to his/her own satisfaction.*

FOR LEASE

OFFICE SPACE

14 Suntree Place, Suite #104
Melbourne, FL 32940

Located west of the Suntree Blvd. & N Wickham Rd. intersection



LIGHTLE
BECKNER
ROBISON

Brian Fernandez
Office and Medical Properties

(321) 722-0707 x21
BrianFernandez@TeamLBR.com

www.TeamLBR.com

70 W. Hibiscus Blvd. · Melbourne, Florida 32901 · (321) 722-0581 fax

© Lightle Beckner Robison, Inc.
All Rights Reserved

*Information contained herein has been obtained from others and considered to be reliable;
However, a purchaser or lessee is expected to verify all information to his/her own satisfaction.*