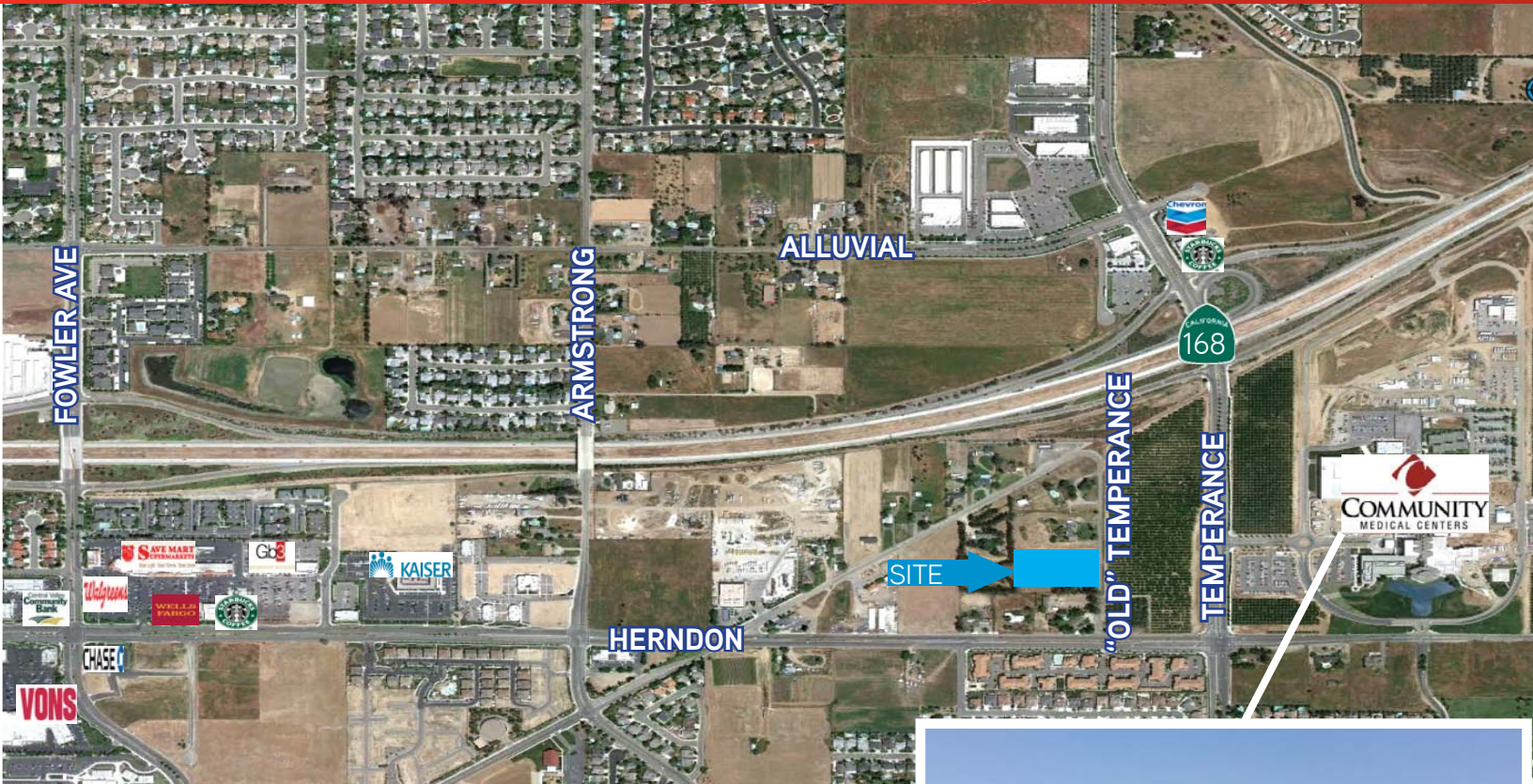


FOR SALE > COMMERCIAL LAND



# 2.66 Acres Zoned Commercial Land

570 TEMPERANCE, CLOVIS, CALIFORNIA



## Property Summary

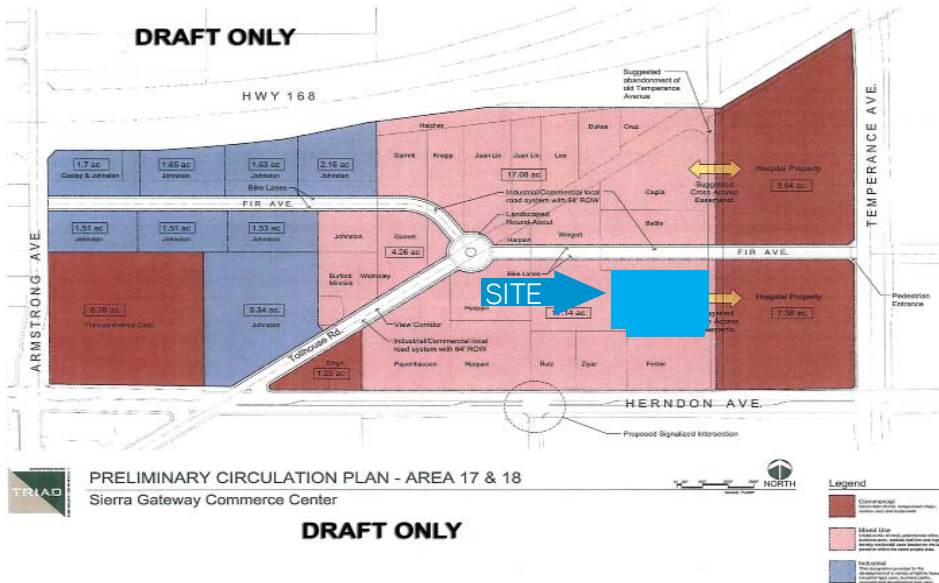
- Location > 570 Temperance Avenue
- Land Composition > 2.66 Acres
- APN > 564-050-30
- Zoning > Mixed Use Commercial (C-2)
- Purchase Price > \$1,245,000
- Comments > Property has excellent upside potential. Conveniently located close to Clovis Community Hospital & Medical Office Buildings and excellent access by Freeway 168/Temperance interchange. Properties are located within the proposed Preliminary Concept Area 17 & 18 (Sierra Gateway Commerce Center.)

BOBBY FENA, SIOR  
559 221 1271 | EXT. 106  
FRESNO, CA  
bobby.fena@colliers.com  
BRE #00590204

COLLIERS INTERNATIONAL  
7485 N. Palm Avenue, #110  
Fresno, CA 93711  
www.colliers.com/fresno

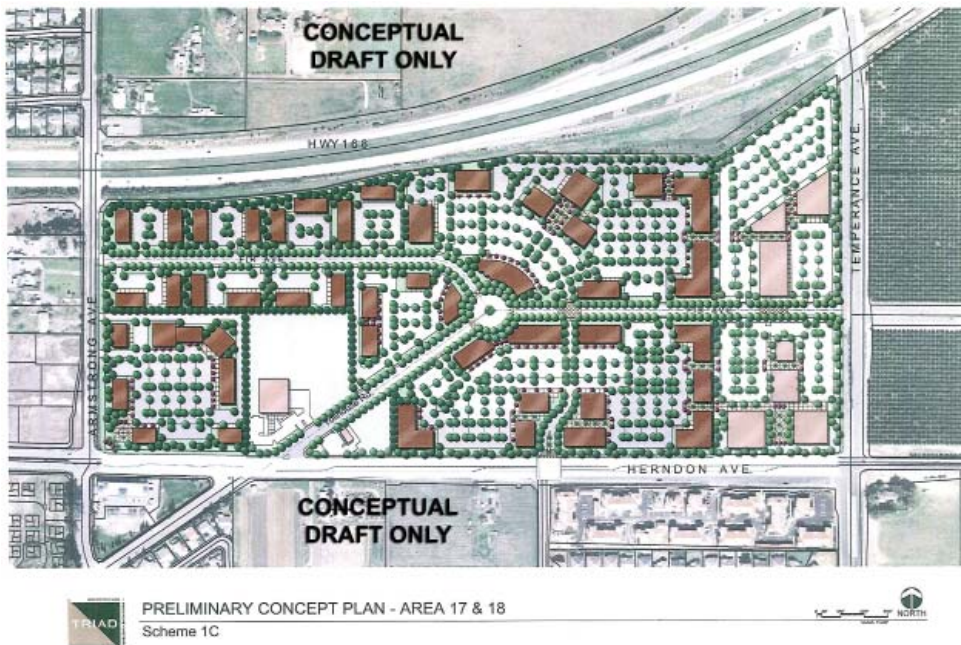
# 2.66 Acres Zoned Commercial Land

Conceptual Draft Only - Awaiting Approval by Clovis City Council.  
 Draft being used with permission from City of Clovis Redevelopment Agency.



## Contact Us

BOBBY FENA, SIOR  
 559 221 1271 | EXT. 106  
 FRESNO, CA  
[bobby.fena@colliers.com](mailto:bobby.fena@colliers.com)  
 BRE #00590204



COLLIERS INTERNATIONAL  
 7485 N. Palm Avenue, #110  
 Fresno, CA 93711  
[www.colliers.com/fresno](http://www.colliers.com/fresno)

This document has been prepared by Colliers International for advertising and general information only. Colliers International makes no guarantees, representations or warranties of any kind, expressed or implied, regarding the information including, but not limited to, warranties of content, accuracy and reliability. Any interested party should undertake their own inquiries as to the accuracy of the information. Colliers International excludes unequivocally all inferred or implied terms, conditions and warranties arising out of this document and excludes all liability for loss and damages arising there from. This publication is the copyrighted property of Colliers International and/or its licensor(s). ©2014. All rights reserved.

