

A photograph of an asphalt parking lot with white parking lines and concrete curbs. In the background, there is a large, light-colored industrial or commercial building under a clear blue sky.

Helping you find
the property of
your dreams

3521 Mission Ave

Carmichael, CA 95608



Discover turnkey medical excellence with our move-in-ready building, managed by Comprehensive Property Management. Elevate your practice seamlessly – where prime location meets top-notch facilities. Your future in healthcare starts here! ✨ #MedicalSpace

Contact Us

**Comprehensive Property
Management**
Tal Solomon
Phone:(916) 664-1864



Explore state-of-the-art healthcare in a move-in-ready medical building! Elevate patient care with modern facilities, ample space, and strategic location. Your vision, our space—unlock the future of healthcare excellence today!



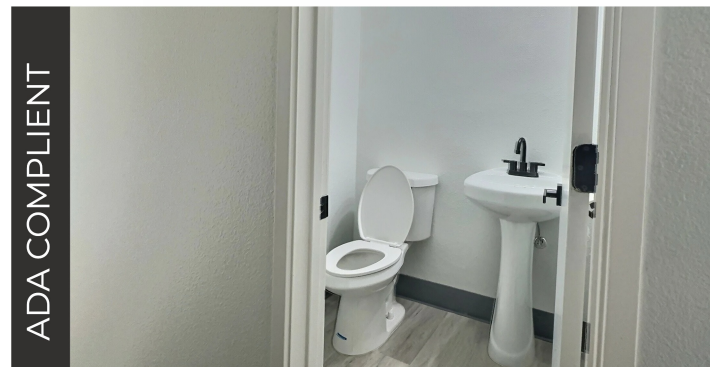
Helping you find
the property of
your dreams



Reception



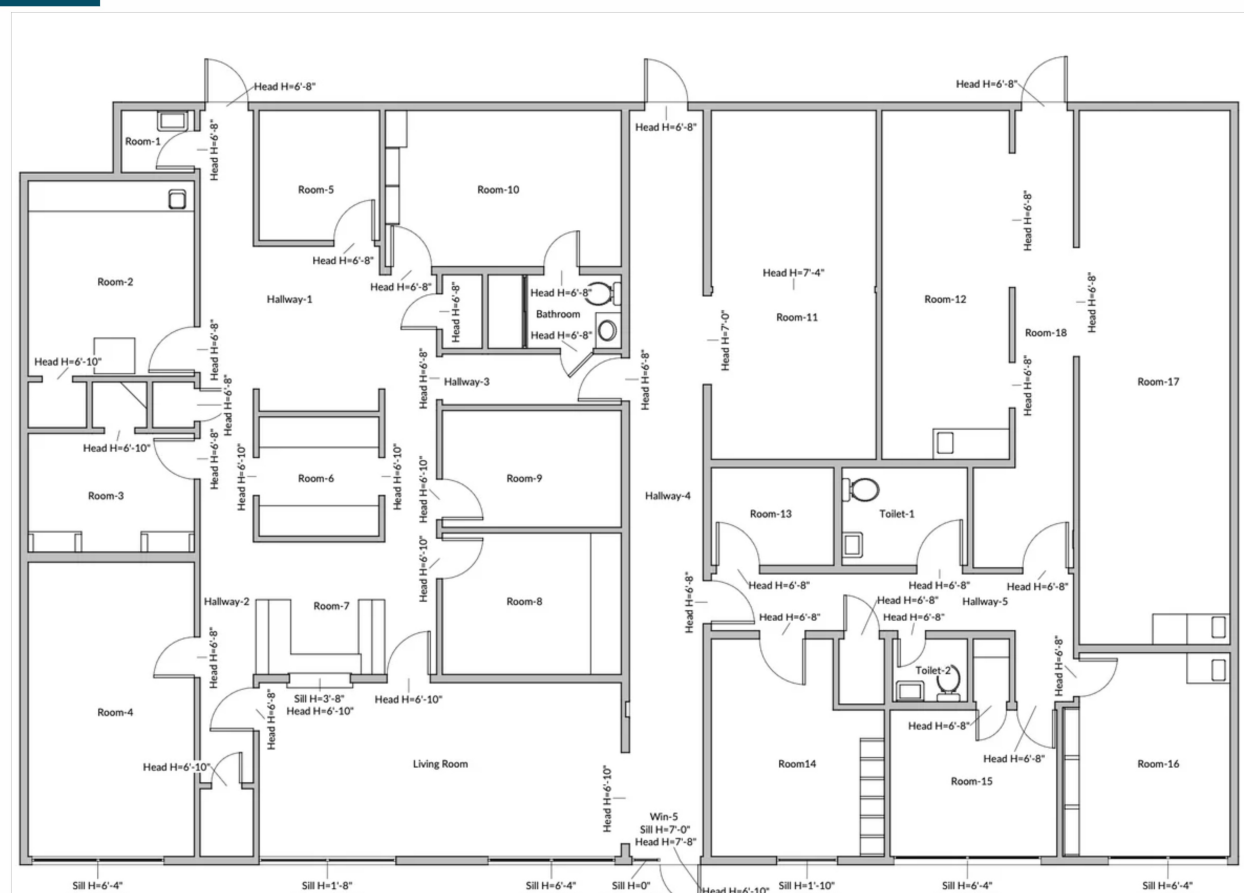
Ample Rooms



ADA COMPLIANT



AMPLE PARKING



Open House Aug 19

FOR LEASE

\$2.35 SF/MONTHS NNN

\$28.00 sf/yr NNN



Indulge in the epitome of excellence! Our prestigious medical building redefines quality—boasting cutting-edge infrastructure, advanced technology, and impeccable design. Elevate your practice with an address synonymous with unparalleled standards. Welcome to a realm where quality meets distinction!