

2ND FLOOR CREATIVE OFFICE - CULVER CITY EAST

5350 VENICE BLVD. LOS ANGELES, CA 90019



GREG OFFSAY · (818) 697-9387
greg@illicre.com · DRE #01837719

ASHER PERGAMENT · (818) 626-5770
asher@illicre.com · DRE #01922775

17547 Ventura Blvd, Suite 304 · Encino CA 91316 · 818.501.2212/Phone · 818.501.2202/Fax · www.illicre.com · DRE #01834124

This information has been secured from sources we believe to be reliable, but we make no representations or warranties, expressed or implied, as to the accuracy of the information. References to square footage are approximate. References to neighboring retailers are subject to change, and may not be adjacent to the vacancy being marketed either prior to, during, or after leases are signed. Lessee must verify the information and bears all risk for any inaccuracies.



5350 VENICE BOULEVARD, LOS ANGELES, CA 90019



- + Freestanding office building on Venice corridor east of Culver City
- + This "Culver East" location is great for businesses who need to be centrally located
- + Late mid-century construction, brick & glass exterior
- + Outdoor yard, parking available
- + This building boasts 1000 AMPS of power, fiber optics and split HVAC system
- + Signage available

GREG OFFSAY · (818) 697-9387
greg@illicre.com · DRE #01837719

ASHER PERGAMENT · (818) 626-5770
asher@illicre.com · DRE #01922775

17547 Ventura Blvd, Suite 304 · Encino CA 91316 · 818.501.2212/Phone · 818.501.2202/Fax · www.illicre.com · DRE #01834124

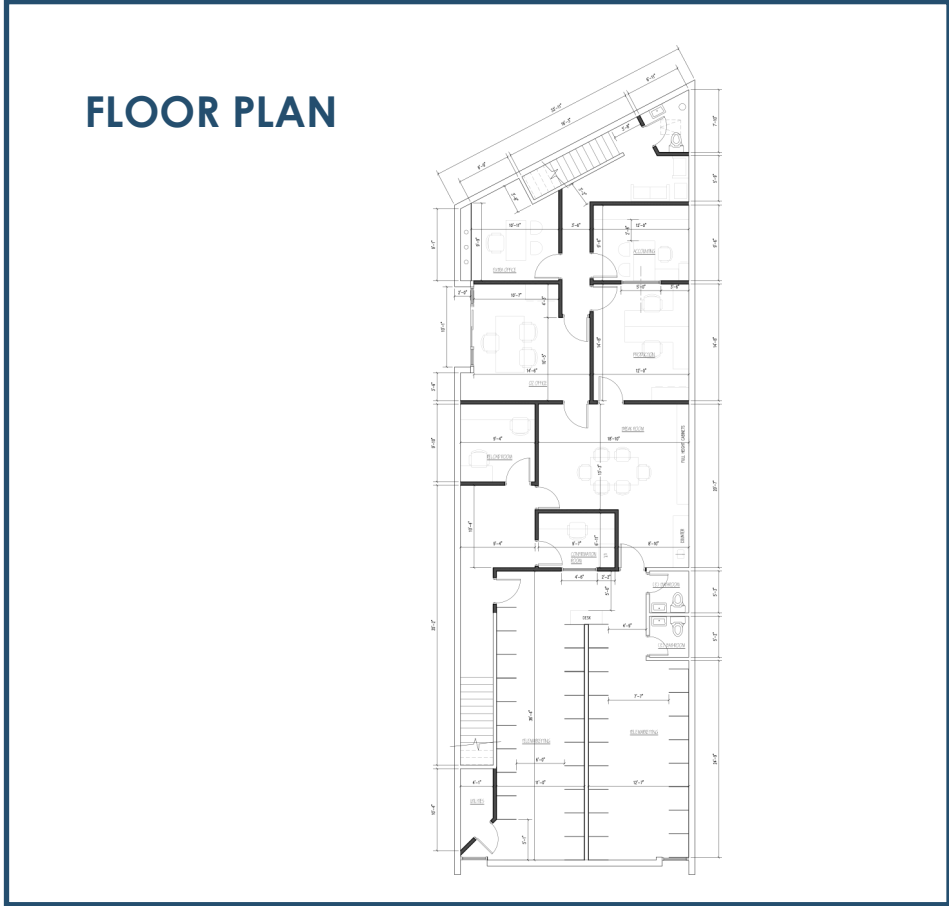
This information has been secured from sources we believe to be reliable, but we make no representations or warranties, expressed or implied, as to the accuracy of the information. References to square footage are approximate. References to neighboring retailers are subject to change, and may not be adjacent to the vacancy being marketed either prior to, during, or after leases are signed. Lessee must verify the information and bears all risk for any inaccuracies.



5350 VENICE BOULEVARD, LOS ANGELES, CA 90019



- + Great mid-city location
- + East of Culver City
- + On Venice Boulevard between La Brea and Fairfax
- + Easy freeway access



GREG OFFSAY · (818) 697-9387
greg@illicre.com · DRE #01837719

ASHER PERGAMENT · (818) 626-5770
asher@illicre.com · DRE #01922775



5350 VENICE BOULEVARD, LOS ANGELES, CA 90019



POPULATION

1-mile	48,530
3-mile	376,393
5-mile	1,168,241



AVERAGE HOUSEHOLD INCOME

1-mile	\$78,303
3-mile	\$96,862
5-mile	\$86,252



DAYTIME POPULATION

1-mile	8,460
3-mile	185,022
5-mile	570,158



GREG OFFSAY · (818) 697-9387
greg@illicre.com · DRE #01837719

ASHER PERGAMENT · (818) 626-5770
asher@illicre.com · DRE #01922775



17547 Ventura Blvd, Suite 304 · Encino CA 91316 · 818.501.2212/Phone · 818.501.2202/Fax · www.illicre.com · DRE #01834124

This information has been secured from sources we believe to be reliable, but we make no representations or warranties, expressed or implied, as to the accuracy of the information. References to square footage are approximate. References to neighboring retailers are subject to change, and may not be adjacent to the vacancy being marketed either prior to, during, or after leases are signed. Lessee must verify the information and bears all risk for any inaccuracies.

5350 VENICE BOULEVARD, LOS ANGELES, CA 90019



GREG OFFSAY · (818) 697-9387
greg@illicre.com · DRE #01837719

ASHER PERGAMENT · (818) 626-5770
asher@illicre.com · DRE #01922775



17547 Ventura Blvd, Suite 304 · Encino CA 91316 · 818.501.2212/Phone · 818.501.2202/Fax · www.illicre.com · DRE #01834124

This information has been secured from sources we believe to be reliable, but we make no representations or warranties, expressed or implied, as to the accuracy of the information. References to square footage are approximate. References to neighboring retailers are subject to change, and may not be adjacent to the vacancy being marketed either prior to, during, or after leases are signed. Lessee must verify the information and bears all risk for any inaccuracies.