

# Effingham Shoppes

1002-1004 N Keller Drive, Effingham, IL 62401

FOR LEASE



## 10,069 SF AVAILABLE

### PROPERTY HIGHLIGHTS

- Nationally anchored shopping center located in the heart of Effingham's retail corridor.
- Endcap junior anchor space available with excellent visibility from N Keller Drive with signaled intersection access.
- Strategically located immediately off the intersection of I-70 and I-57.
- Effingham is a regional hub for work, shopping, healthcare, and recreation causing its daytime population to double daily

DEMOGRAPHICS	1 MILE	3 MILES	5 MILES
Total Households	1,917	6,082	7,929
Total Population	4,325	14,152	18,990
Average HH Income	\$53,168	\$71,829	\$76,094



For More Information, Contact

**JOSH WULZ** | 404.812.8922 | [jwulz@skylineseven.com](mailto:jwulz@skylineseven.com)

**KIM MOORE** | 404.751.3355 | [kmoore@skylineseven.com](mailto:kmoore@skylineseven.com)

800 MT. VERNON HIGHWAY NE | SUITE #425 | 404.812.8922 | [SKYLINESEVEN.COM](http://SKYLINESEVEN.COM)

Jointly Listed With

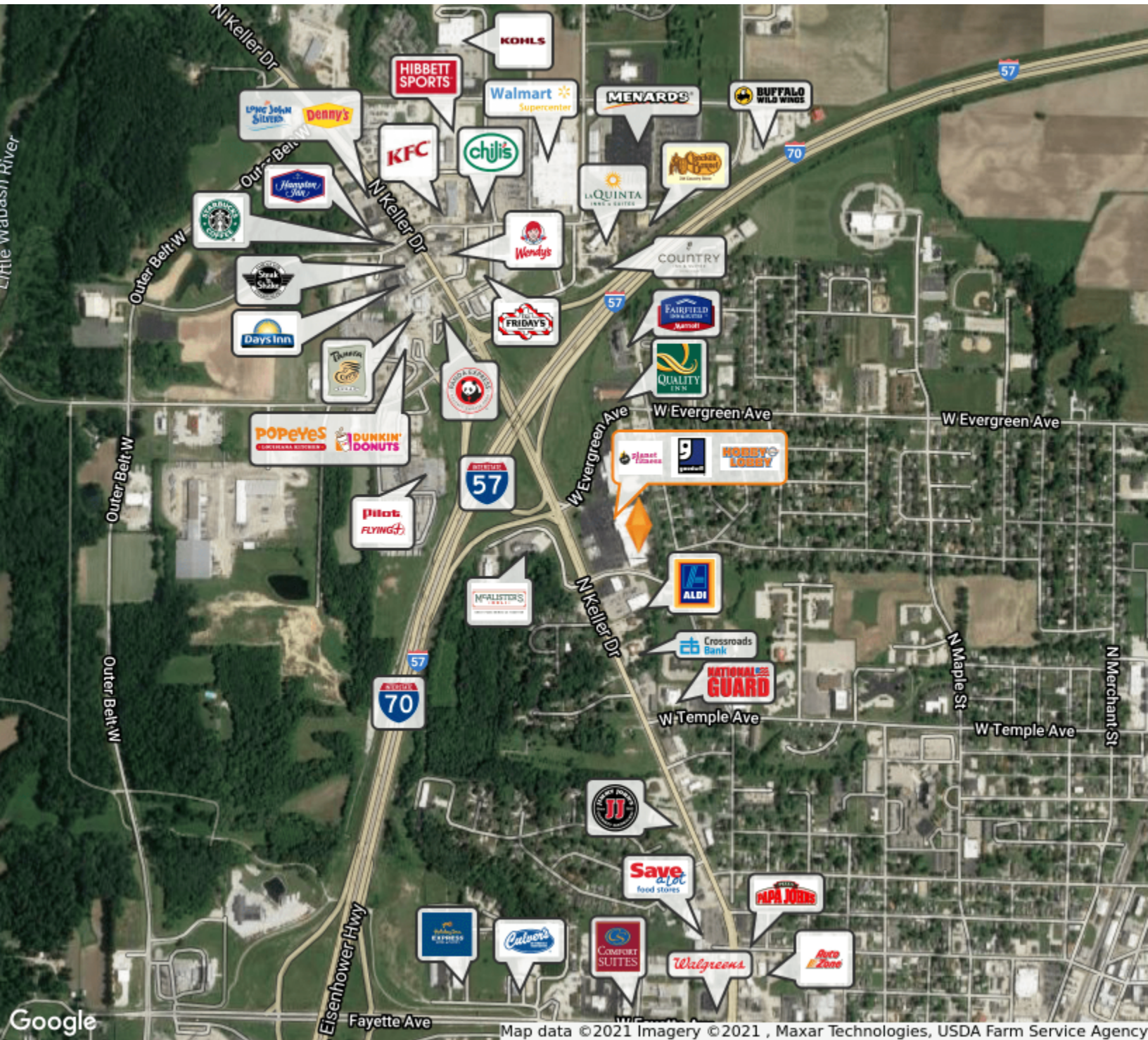
**MIKE CORNWELL** | MCRE Property Management Inc. | 217.254.3331 | [mcornwell@consolidated.net](mailto:mcornwell@consolidated.net)



# Effingham Shoppes

1002-1004 N Keller Drive, Effingham, IL 62401

FOR LEASE



For More Information, Contact

**JOSH WULZ** | 404.812.8922 | [jwulz@skylineseven.com](mailto:jwulz@skylineseven.com)

**KIM MOORE** | 404.751.3355 | [kmoore@skylineseven.com](mailto:kmoore@skylineseven.com)

800 MT. VERNON HIGHWAY NE | SUITE #425 | 404.812.8922 | [SKYLINESEVEN.COM](http://SKYLINESEVEN.COM)

Jointly Listed With

**MIKE CORNWELL** | MCRE Property Management Inc. | 217.254.3331 | [mcornwell@consolidated.net](mailto:mcornwell@consolidated.net)

