




1130 WEST 700 NORTH PLEASANT GROVE, UTAH
ZYTO BUILDING



PROPERTY INFORMATION

- New 3 story Class A office building
- 29,943 SF available for lease
1st floor: 16,323 RSF
2nd floor: 13,620 RSF
- Compelling lease rate: \$19.75 per square foot, Full Service
- Negotiable Tenant Improvements (new 1st generation space)
- Stunning 3 story atrium lobby
- Loading dock and fulfillment area
- Building exterior signage available
- Close proximity to I-15 – ideal North Utah County location
- Floor to ceiling glass – high ceilings
- Ample parking

 **Brandon Fugal**
801.947.8300
brandon.fugal@cbcadvisors.com

 **Patrick Lucero, CCIM**
801.947.8360
patrick.lucero@cbcadvisors.com

 **Artie Lucero**
801.947.8361
artie.lucero@cbcadvisors.com

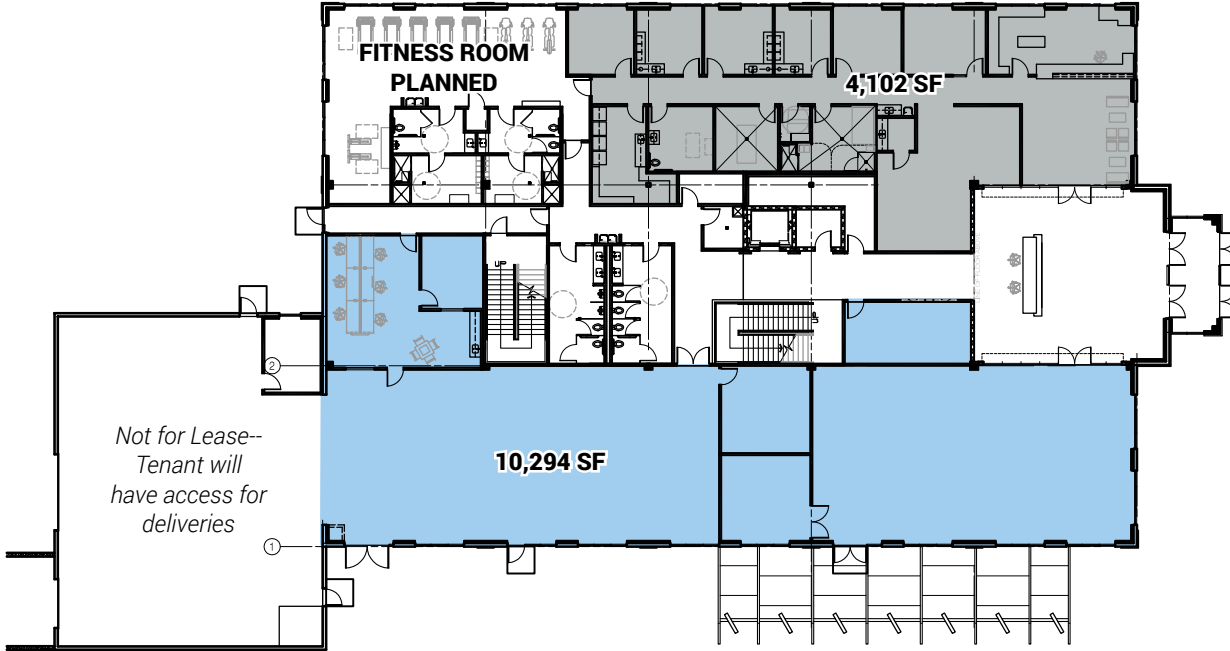
www.cbcadvisors.com



CBC ADVISORS
6550 S MILLROCK DR, STE 200
SALT LAKE CITY, UTAH 84121
(P) 801.947.8300

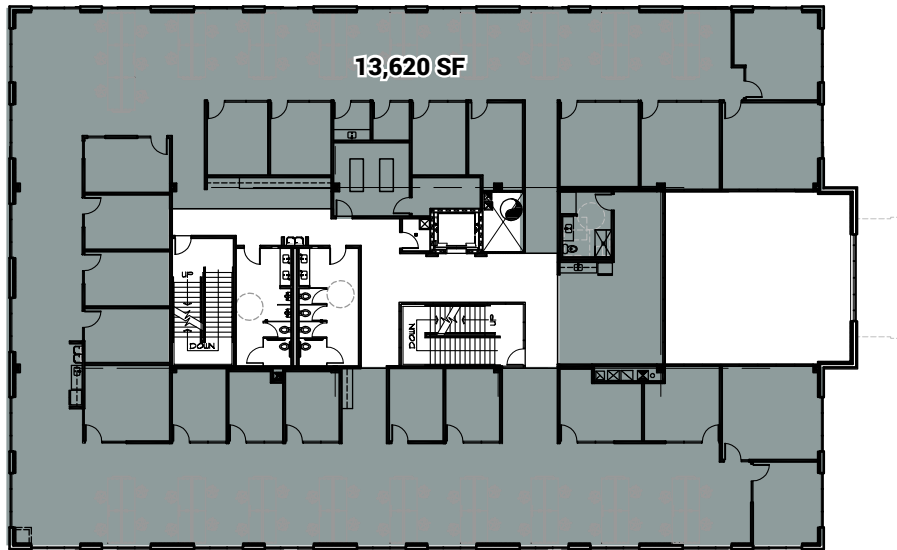


FIRST FLOOR



3 STORY ATRIUM

SECOND FLOOR



Brandon Fugal
801.947.8300
brandon.fugal@cbcadvisors.com

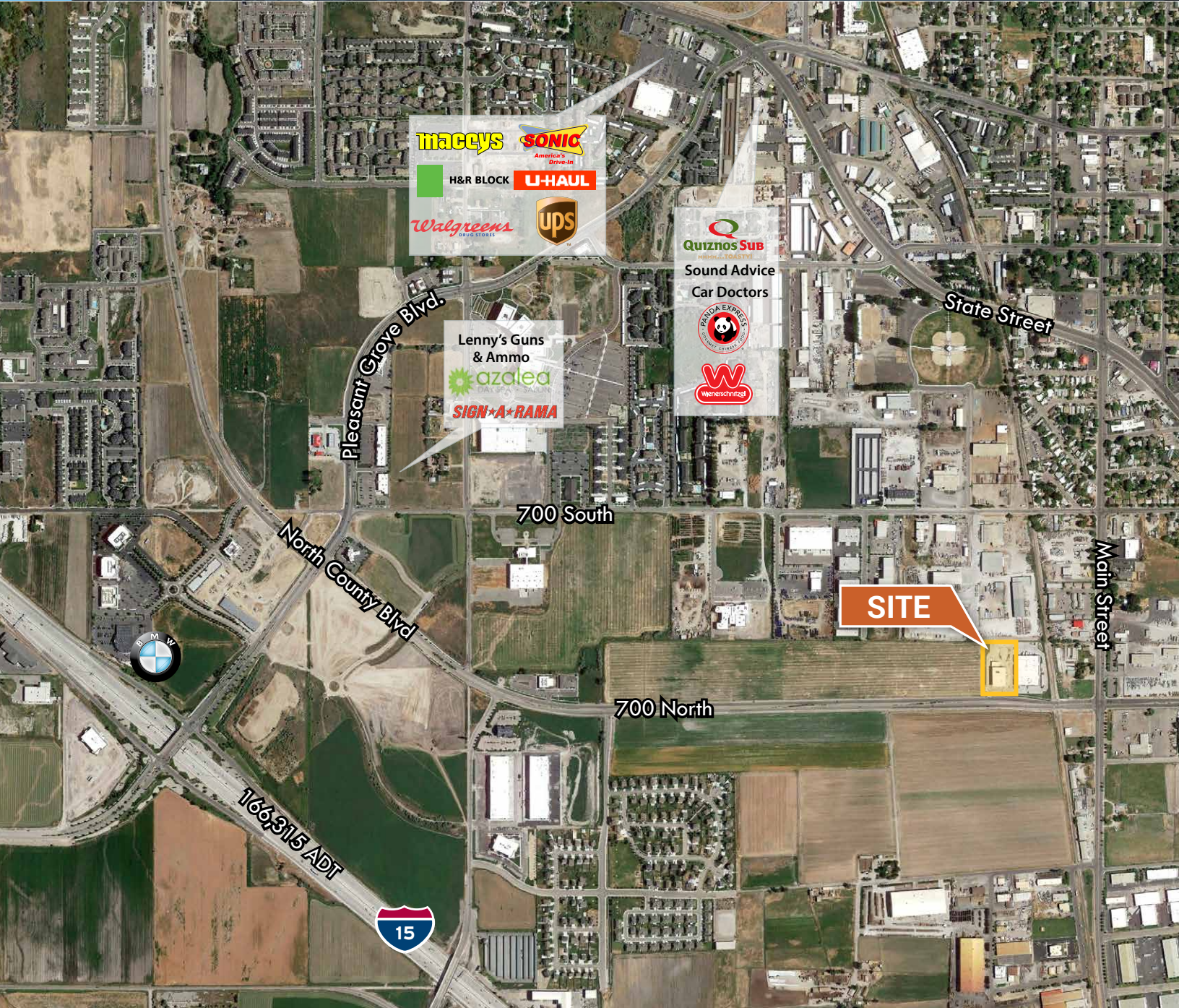
Patrick Lucero, CCIM
801.947.8360
patrick.lucero@cbcadvisors.com

Artie Lucero
801.947.8361
artie.lucero@cbcadvisors.com

www.cbcadvisors.com



CBC ADVISORS
6550 S MILLROCK DR, STE 200
SALT LAKE CITY, UTAH 84121
(P) 801.947.8300



Brandon Fugal
801.947.8300
brandon.fugal@cbcadvisors.com

Patrick Lucero, CCIM
801.947.8360
patrick.lucero@cbcadvisors.com

Artie Lucero
801.947.8361
artie.lucero@cbcadvisors.com

www.cbcadvisors.com



CBC ADVISORS
6550 S MILLROCK DR, STE 200
SALT LAKE CITY, UTAH 84121
(P) 801.947.8300