

OFFICE BUILDING FOR SALE



170 RHODES STREET

Providence, RI 02903

MICHAEL GIUTTARI, SIOR

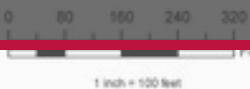
President
401.751.3200 x305
mike@mgcommercial.com

MG COMMERCIAL

365 Eddy Street, Penthouse Suite
Providence, RI 02903
401.751.3200 | mgcommercial.com

Plat No. 046

The City of Providence
RHODE ISLAND



Showing parcels of real estate as assessed Dec. 31, 2016

EXECUTIVE SUMMARY



LOCATION DESCRIPTION

The property is located at the hospital complex in Providence. It is situated along Route 95 with the potential for a billboard on the roof towards I-95. It is in very close proximity to RI Hospital, Women & Infants Hospital and Hasbro Children’s Hospital, with easy access to I-95.

PROPERTY DESCRIPTION

170 Rhodes Street (Plat 46, Lot 628) is a single story, 2,052 SF block building with frontage directly on Rhodes Street and I-95. 12+ on-site parking spaces with additional on street parking available. A combination of offices and open area with new operable windows.

OFFERING SUMMARY

Sale Price:	\$295,000
Building Size:	2,052 SF
Parking:	12 Spaces
Taxes:	\$6,408

PROPERTY HIGHLIGHTS

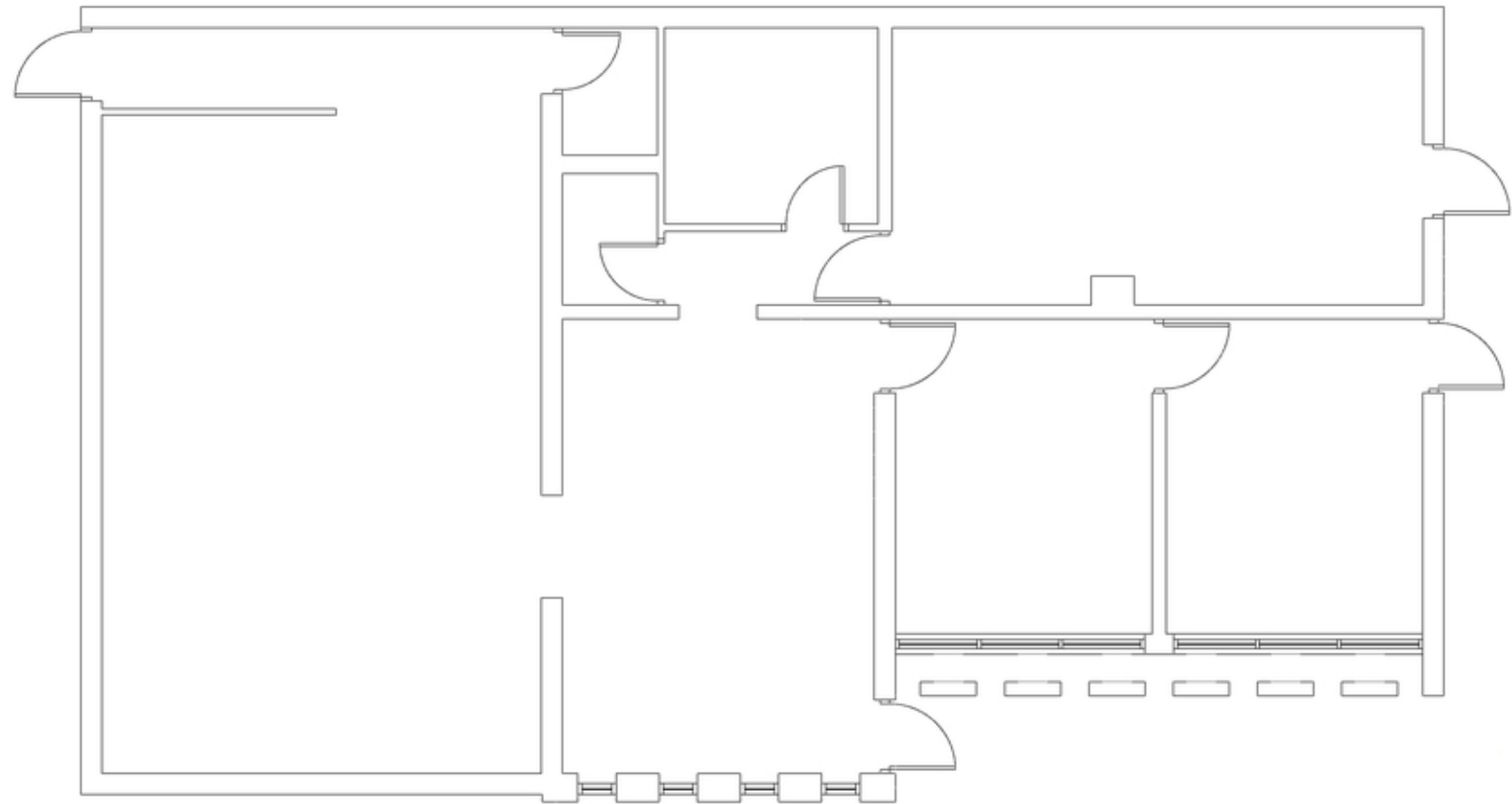
- Free standing building
- High visibility
- Private parking lot with 12+ spaces and additional on-street parking
- Good mix of open space and private offices

MICHAEL GIUTTARI, SIOR
President
401.751.3200 x305
mike@mngcommercial.com

365 Eddy Street, Penthouse Suite
Providence, RI 02903
mngcommercial.com



FLOOR PLAN

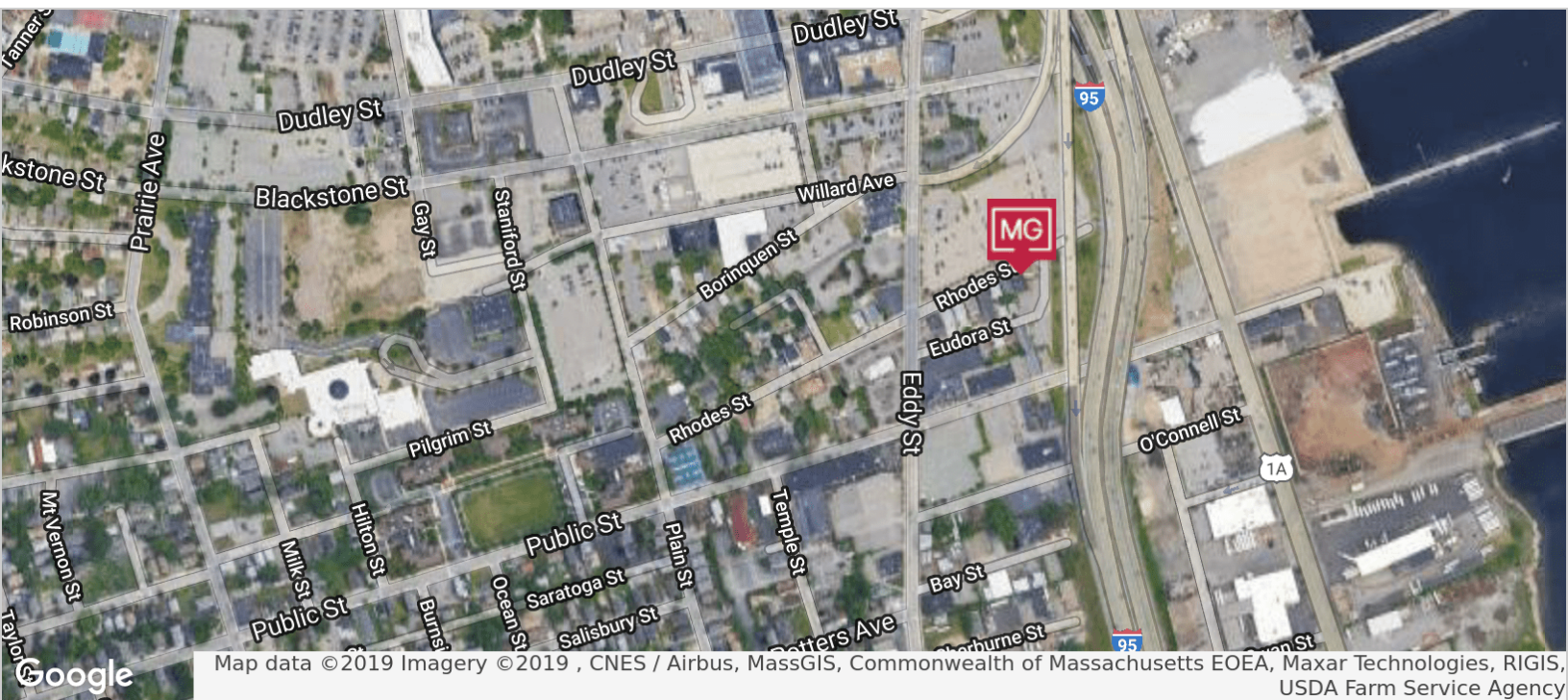
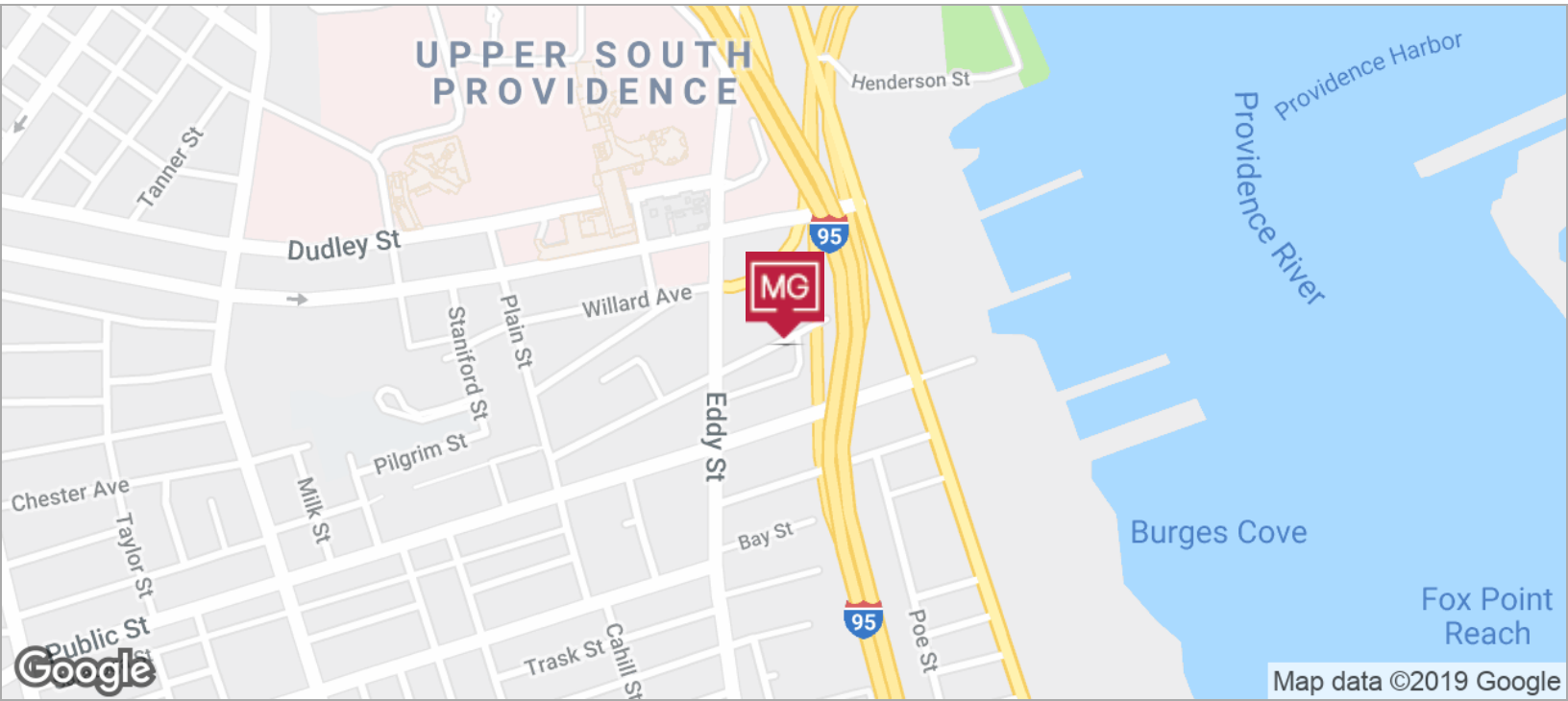


MICHAEL GIUTTARI, SIOR
President
401.751.3200 x305
mike@mgscommercial.com

365 Eddy Street, Penthouse Suite
Providence, RI 02903
mgscommercial.com



LOCATION MAPS



MICHAEL GIUTTARI, SIOR
President
401.751.3200 x305
mike@mgscommercial.com

365 Eddy Street, Penthouse Suite
Providence, RI 02903
mgscommercial.com

