



2 RIVERWAY



2
RIVERWAY

WHY

2 RIVERWAY

17 ENGAGING STORIES

360° HIGH-END SUITE OF AMENITIES

MODERN RENOVATED LOBBY

Exceptional Visibility

New Modern Tenant Lounge, Conference & Training Center

High-Performance Fitness Center

Convenient On-Site Starbucks Cafe

Upscale On-Site Deli with WiFi (+Suite Catering)

Dedicated On-Site Property Management

On-Site 24/7 Security Concierge

On-site Retail Banking

Outdoor Seating Area

Institutional Ownership

Ideal Access + Prominent Location



LUXURY

AT ITS FINEST

THESE ENHANCEMENTS
ADD VALUE, INSPIRATION
+ CONVENIENCE TO
IMPROVE YOUR OVERALL
DAILY WORK EXPERIENCE.



coffee bar



seating in park-like
setting



tenant lounge

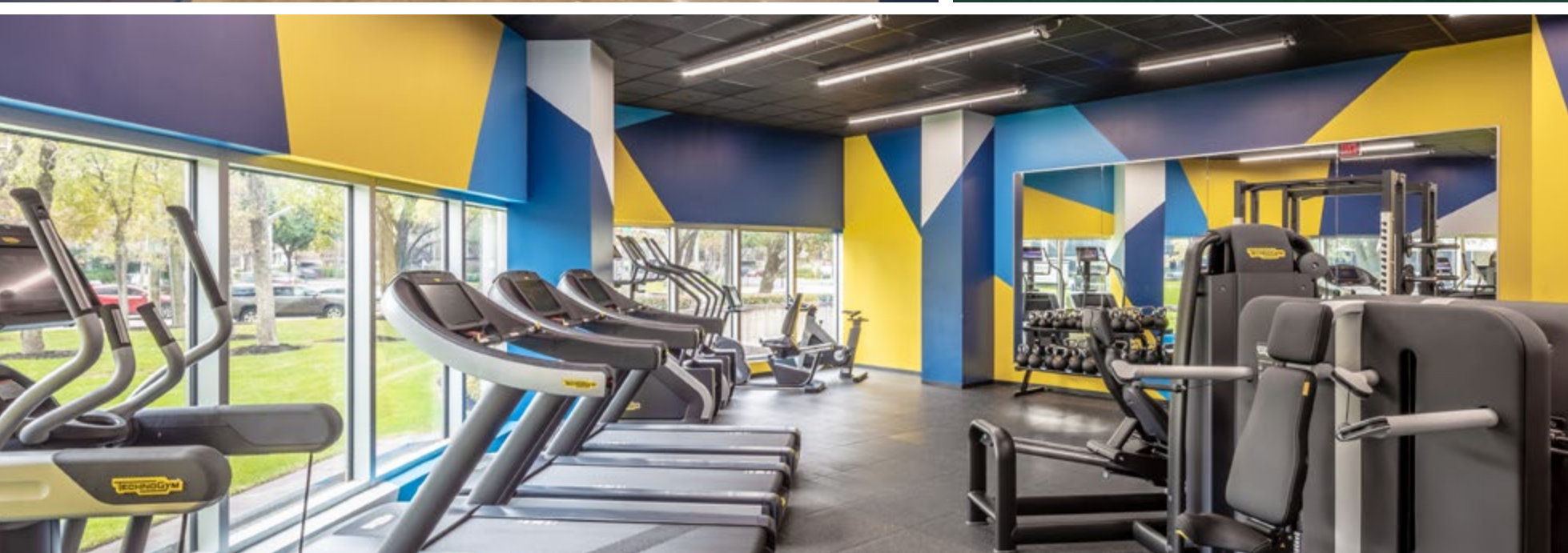


fast + casual cafe





REJUVENATION



NEXT-LEVEL FITNESS

HIGH PERFORMANCE FITNESS FACILITY WITH EQUIPMENT CONNECTED TO TV, WEB, AND WIFI. WITH VIEWS OF THE SURROUNDING GREEN SPACE, FITNESS HAS NEVER BEEN SO REJUVENATING.



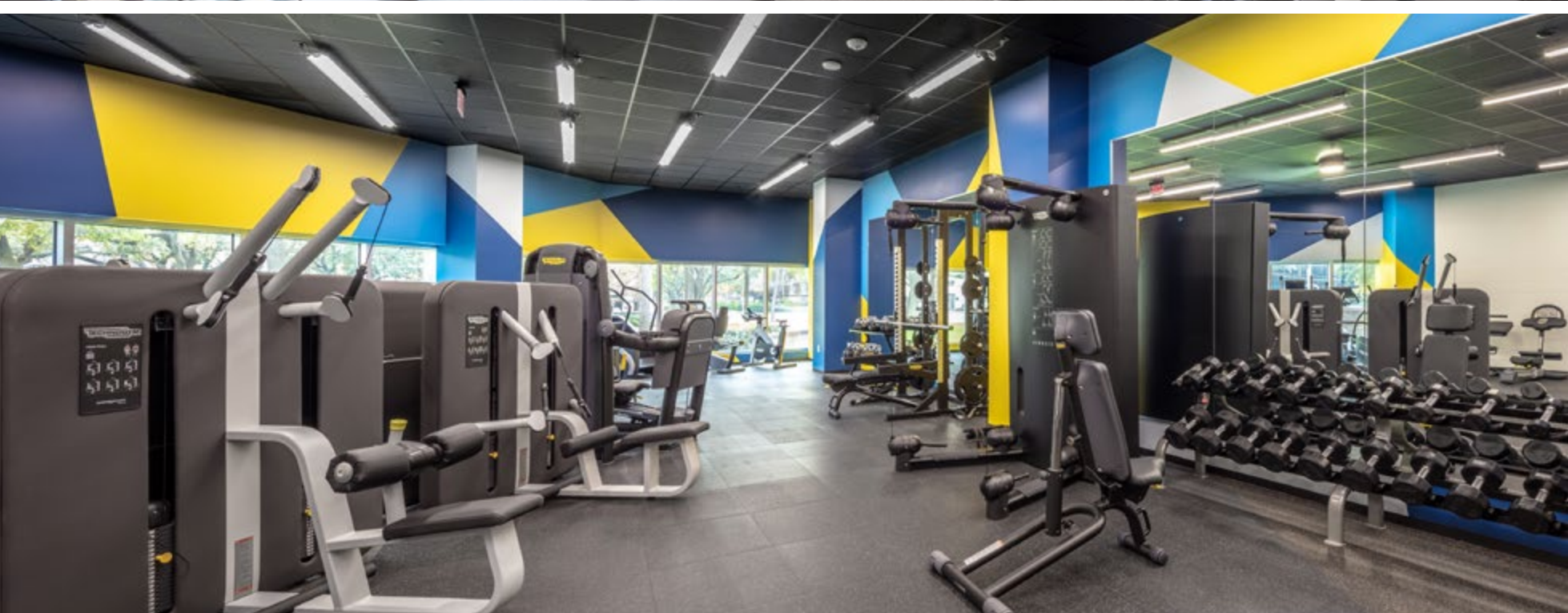
tv + web + wifi



personal audio and visual systems to track progress + goals



full service locker rooms



5TH FLOOR

AMENITY CENTER

NOW OPEN

EXPERIENCE THE NEW, MODERN TENANT AMENITY CENTER ON THE 5TH FLOOR, FEATURING PREMIUM FIXTURES, STYLISH FINISHES AND FURNITURE, AND FULL WI-FI AND A/V CONNECTIVITY—AVAILABLE TO EVERY 2 RIVERWAY TENANT.



training room

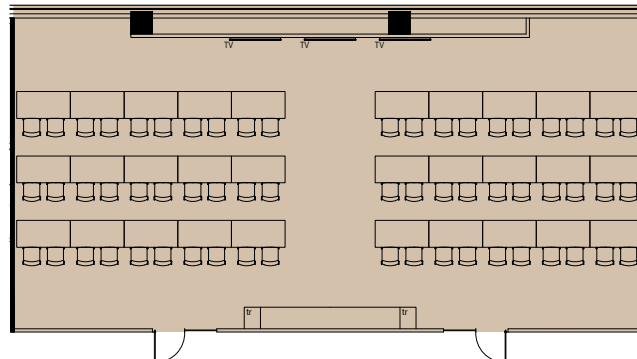


conference

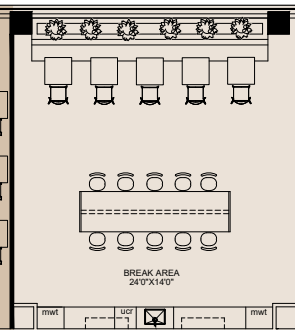


lounge & break area

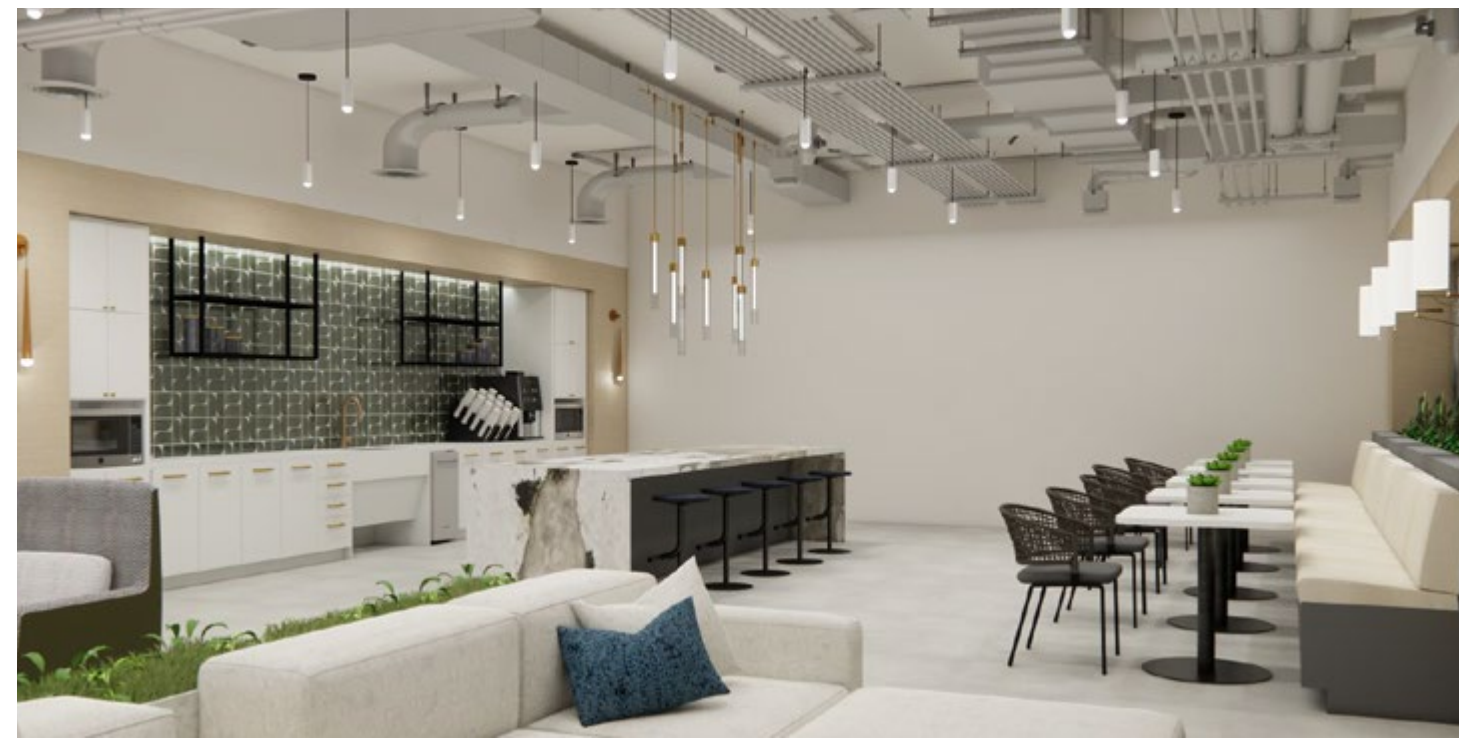
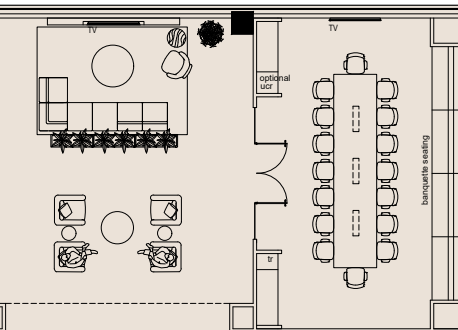
Training Room



Break Area



Lounge Conference



AVAILABILITIES



22,000
SF floor plates

360°
views of Houston



REAL TENANT VALUE

HOSPITALITY FEEL WITH INNOVATIVE SOLUTIONS

Enjoy customizable creative open layouts for a large tenant or space saving inventive designs for a smaller suite, offering the same high-end finishes and amenities to each.

[VIEW AVAILABILITES](#)

ABOVE MARKET SPEC SUITES WITH HIGH-END FINISHES



PRIME LOCATION

WHERE YOU CAN HAVE IT ALL

BUSINESS + PLEASURE

CENTER OF YOUNG PROFESSIONAL WORKFORCE

Within a 3 mile radius, the city's best and brightest live, work and play.

36
median age

41%
millennials

ABUNDANT AREA AMENITIES

Improve workforce productivity and happiness.



walkable amenities =
less time away from desk

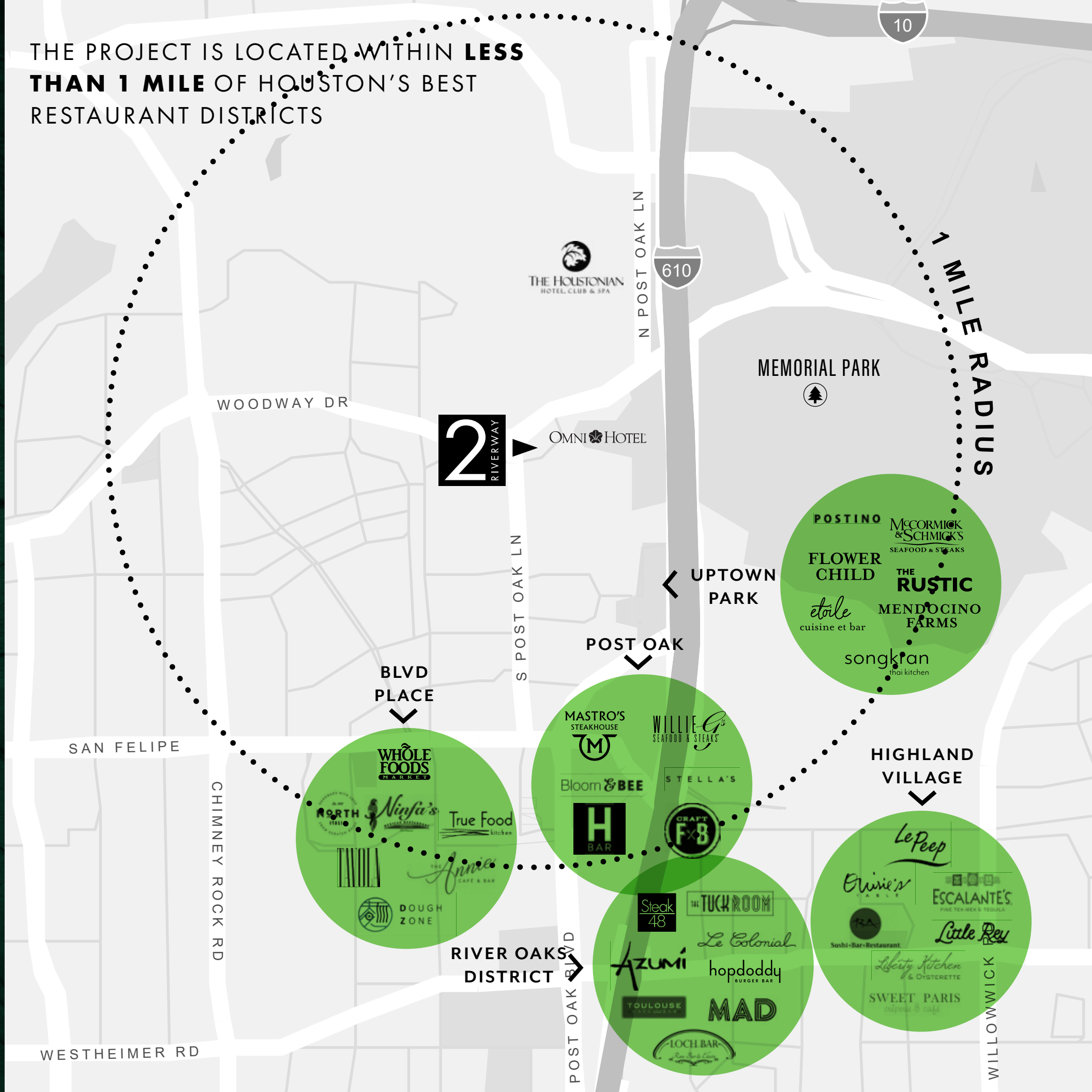


employees have limitless
options for quick lunches

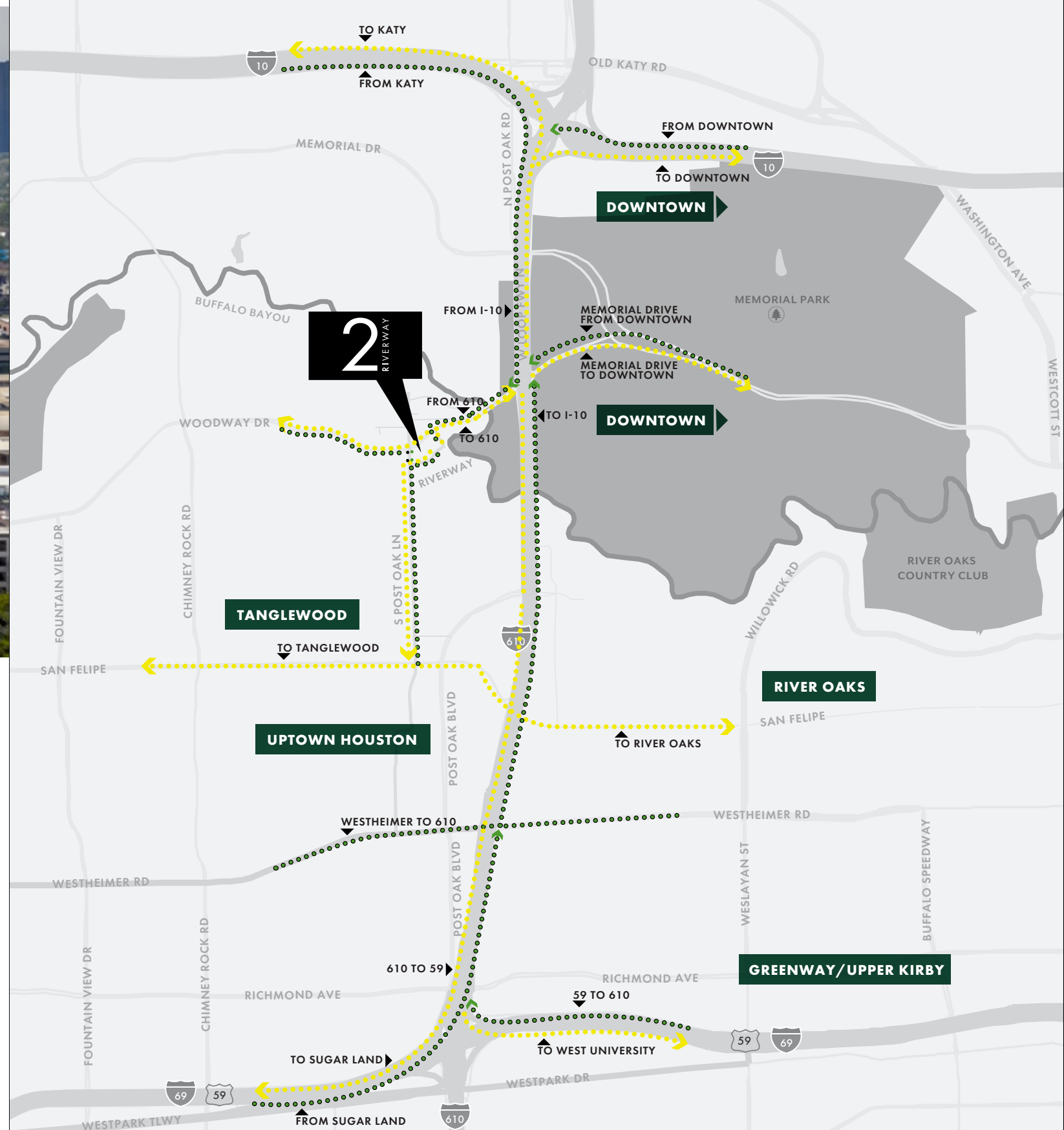


prime location near residential
and commercial hotspots

THE PROJECT IS LOCATED WITHIN **LESS THAN 1 MILE** OF HOUSTON'S BEST RESTAURANT DISTRICTS



SUPERIOR ACCESS



EXPLORE THE NEIGHBORHOOD

JUST MINUTES AWAY

With retail, dining, residential and office so close, you'll never want to leave.

3
minute drive to
MEMORIAL PARK

4
minute drive to
UPTOWN PARK

5
minute drive to
BLVD PLACE

6
minute drive to
**RIVER OAKS
DISTRICT**

8
minute drive to
THE GALLERIA

MEMORIAL PARK

URBAN WILDERNESS

ADVENTURE AWAITS



DIRECT ACCESS TO MEMORIAL PARK

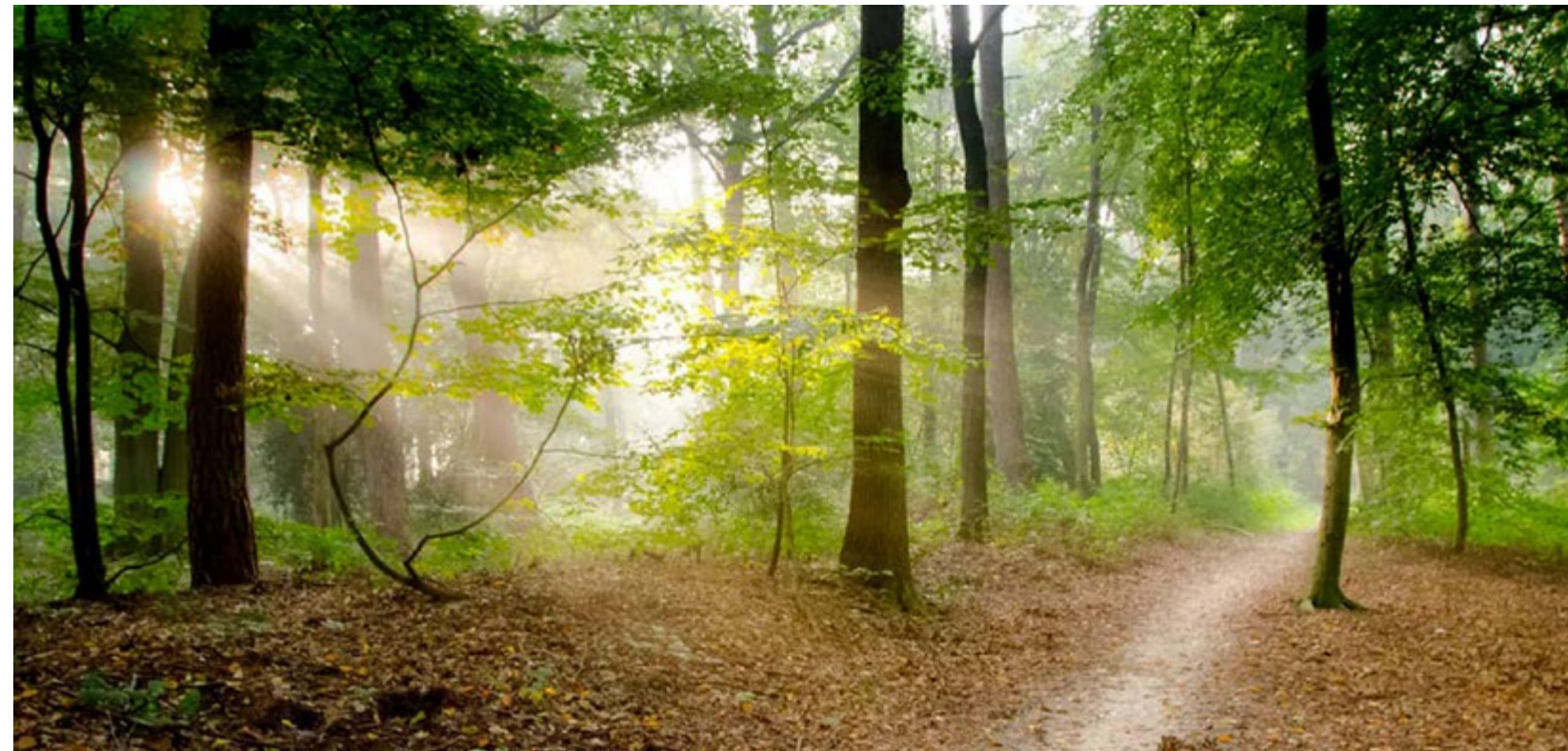
Lush green views of the 1,500 acre park.

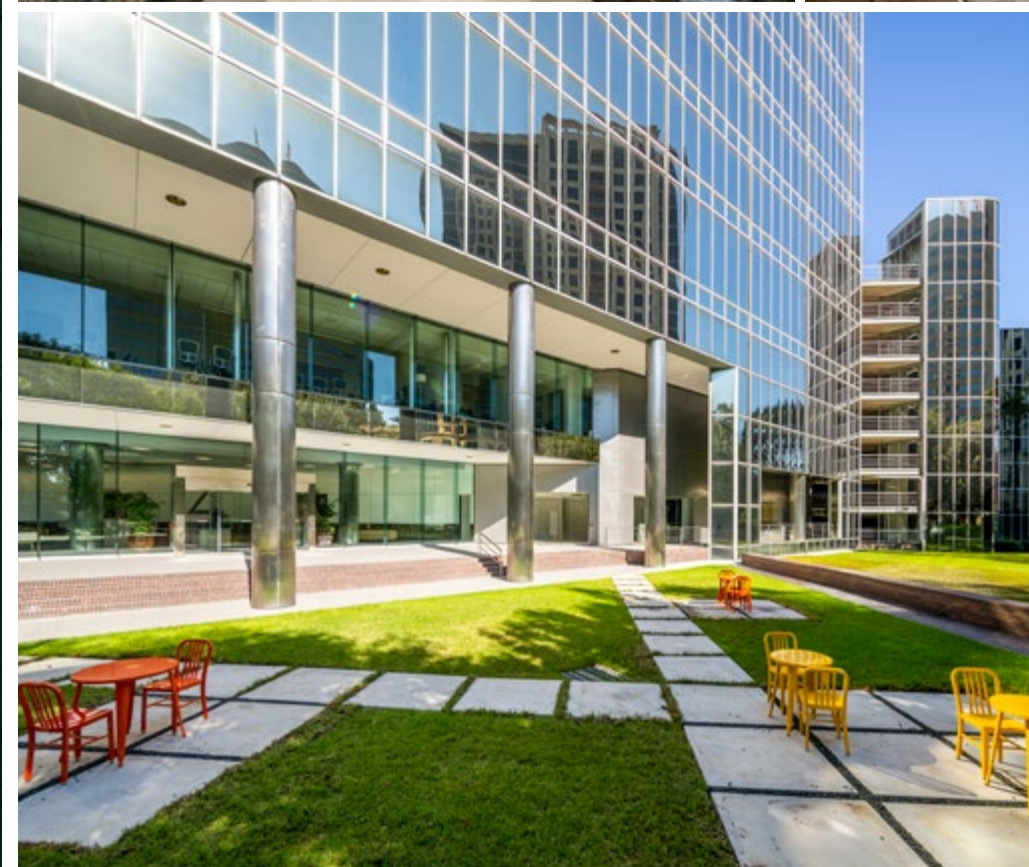
10 YEAR MASTER PLAN



Ecological Restoration and Improvement Project

Reconnecting Memorial Park to its legacy heritage and wilderness.





FOR LEASING INFORMATION

LOUANN PEREIRA

713.272.1267

louann.pereira@transwestern.com

JACK SCHARNBERG

713.407.8717

jack.scharnberg@transwestern.com