

# 7TH PROFESSIONAL PLAZA

715 E 3900 S Salt Lake City, UT 84107



Investment Realty  
ADVISORS

## EVAN WRYE

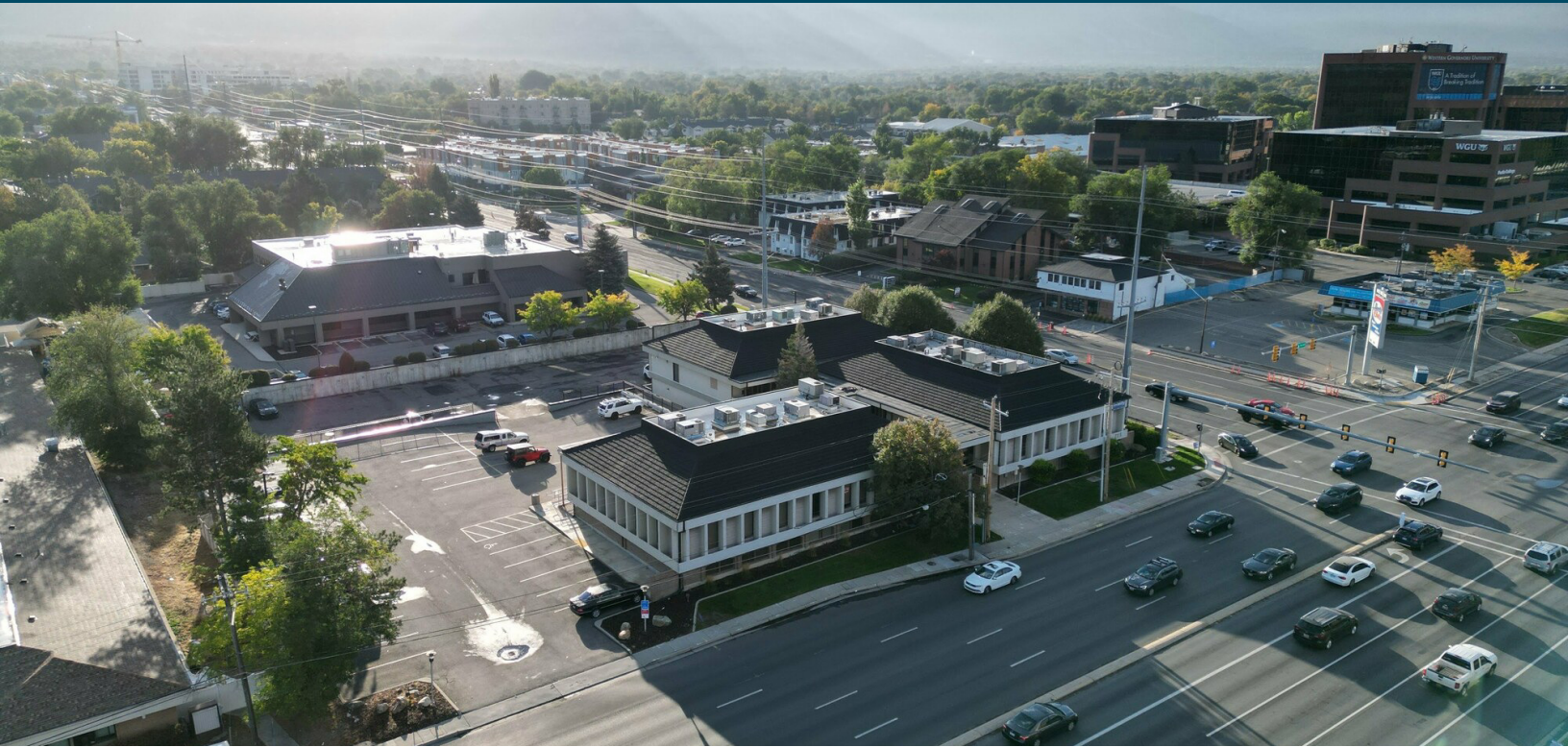
Vice President of Commercial Leasing  
385.469.0920  
evan@iraut.com

## ELLIOT ABEL

Associate Broker  
435.485.7070  
elliot@iraut.com

*2,000 SF of Medical/Office Space Available*

# PROPERTY SUMMARY



## LOCATION DESCRIPTION

This is an excellent professional office plaza. Clean offices in a convenient location off 700 East with excellent parking and access. Located at 715 East 3900 South, Salt Lake City, Utah, 84107.

## UNIT DESCRIPTION

Unit 112 is a dental/medical office in central Millcreek available now. The office comes with several offices and stations set up for dental practice. Plumbing has already been pulled throughout space. Space does not come with furniture or medical equipment seen in photos.

## OFFERING SUMMARY

Lease Rate:	\$15.75/SF/YR
Lease Type:	Full-Service
Number of Units Available:	1
Available SF:	2000
Lot Size:	1.44
NOI:	\$0.00
Parking Ratio:	3/1,000
ADA Parking Stalls:	5
Total Parking Stalls:	81
AADT:	26,000
Lease Term:	1-5 years
Available Date:	Now

**EVAN WRYE**

Vice President of Commercial Leasing  
385.469.0920  
evan@iraut.com

**ELLIOT ABEL**

Associate Broker  
435.485.7070  
elliott@iraut.com

Investment Realty Advisors  
411 W 7200 S, Suite 201, Midvale, UT 84047

715 E 3900 S, SALT LAKE CITY, UT 84107

# SITE AND AVAILABILITY



**EVAN WRYE**

Vice President of Commercial Leasing  
385.469.0920  
evan@iraut.com

**ELLIOT ABEL**

Associate Broker  
435.485.7070  
elliott@iraut.com

Investment Realty Advisors  
411 W 7200 S, Suite 201, Midvale, UT 84047

UNIT 112 | 2,000 SF  
AVAILABLE NOW

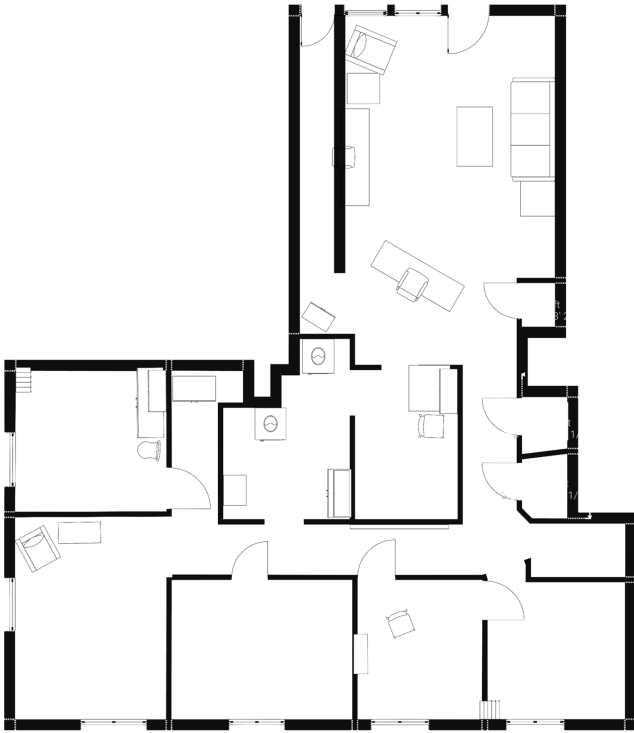


**EVAN WRYE**  
Vice President of Commercial Leasing  
385.469.0920  
evan@iraut.com

**ELLIOT ABEL**  
Associate Broker  
435.485.7070  
elliott@iraut.com

Investment Realty Advisors  
411 W 7200 S, Suite 201, Midvale, UT 84047

UNIT 211 | 1,609 SF  
AVAILABLE NOW



**EVAN WRYE**  
Vice President of Commercial Leasing  
385.469.0920  
evan@iraut.com

**ELLIOT ABEL**  
Associate Broker  
435.485.7070  
elliott@iraut.com

Investment Realty Advisors  
411 W 7200 S, Suite 201, Midvale, UT 84047

# LOCATION MAP



**EVAN WRYE**  
Vice President of Commercial Leasing  
385.469.0920  
evan@ira.ut.com

**ELLIOT ABEL**  
Associate Broker  
435.485.7070  
elliott@ira.ut.com

Investment Realty Advisors  
411 W 7200 S, Suite 201, Midvale, UT 84047