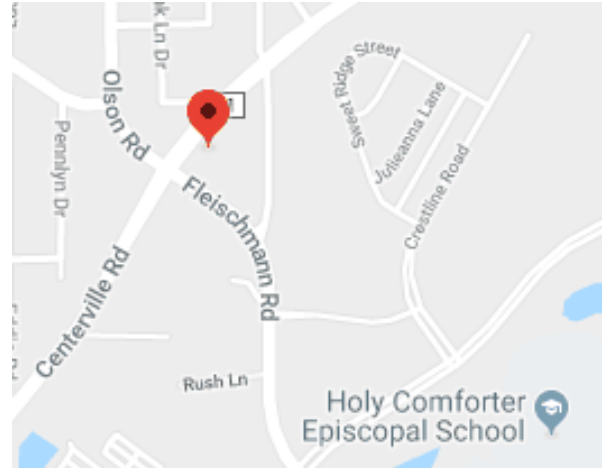


Woodham Commercial Real Estate
Wally Woodham, Broker
(850) 894-4600

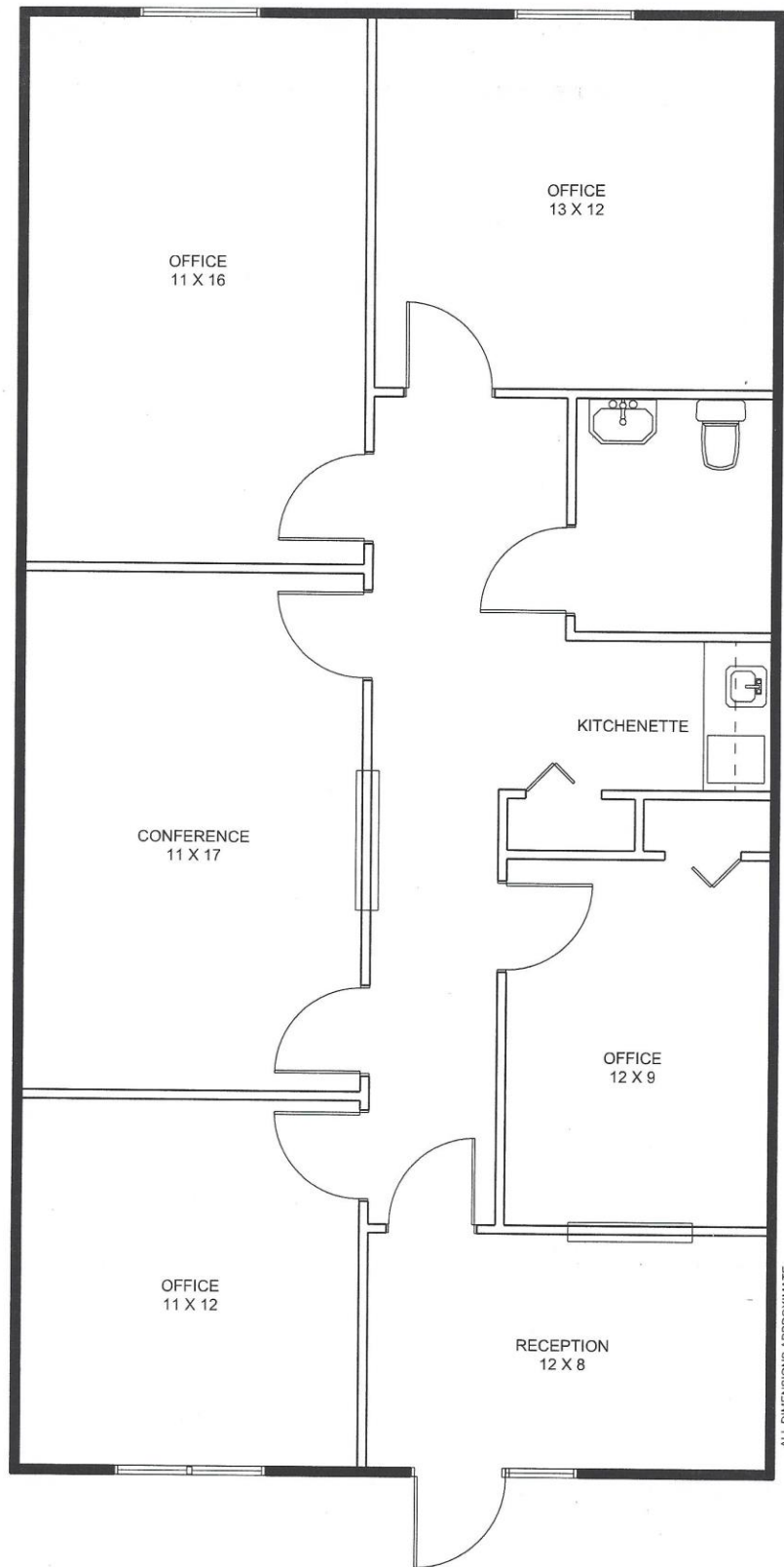
FOR LEASE



- Address:** 2419 Fleischmann Road, Unit 3, Tallahassee, FL 32308
- Space:** 1,200 Square Feet
Reception area, 4 private offices, conference room, kitchen and restroom.
- Lease Price:** \$1,600 plus sales tax
- Comments:** Quiet, professional office located off Centerville Road. Convenient location, easy access, first floor, front door parking.

NO WARRANTY OR REPRESENTATION, EXPRESS OR IMPLIED, IS MADE AS TO THE ACCURACY OF THE INFORMATION CONTAINED HEREIN, AND THE SAME IS SUBMITTED SUBJECT TO ERRORS, OMISSIONS, CHANGE OF PRICE, RENTAL OR OTHER CONDITIONS, PRIOR SALE, LEASE OR FINANCING, OR WITHDRAWAL WITHOUT NOTICE, AND OF ANY SPECIAL LISTING CONDITIONS IMPOSED BY OUR PRINCIPALS NO WARRANTIES OR REPRESENTATIONS ARE MADE AS TO THE CONDITION OF THE PROPERTY OR ANY HAZARDS CONTAINED THEREIN ARE ANY TO BE IMPLIED.

FOR FURTHER INFORMATION CALL WALLY WOODHAM, (850) 894-4600.



2419 Fleischmann Rd., Unit 3

3726 Kerry Court / Tallahassee, Florida 32309 / Phone: (850) 894-4600



3726 Kerry Court / Tallahassee, Florida 32309 / Phone: (850) 894-4600