



RADICE CORPORATE CENTER III

1000 CORPORATE DRIVE FORT LAUDERDALE, FL 33334

CLASS A OFFICE SPACE FOR LEASE

- RENTAL RATE: \$18.00 PSF NNN
- OP. EXP.: \$12.09 PSF
- PARKING: 4 spaces per 1,000 SF



FOR MORE
INFORMATION
PLEASE
CONTACT

TYLER HARRISON
MANAGING PRINCIPAL
Equistone Partners

Office 954.239.7874
Direct 954.239.7842
tyler.harrison@equistone.com

EQUISTONE
COMMERCIAL REAL ESTATE PARTNERS

RADICE CORPORATE CENTER III

1000 CORPORATE DRIVE FORT LAUDERDALE, FL

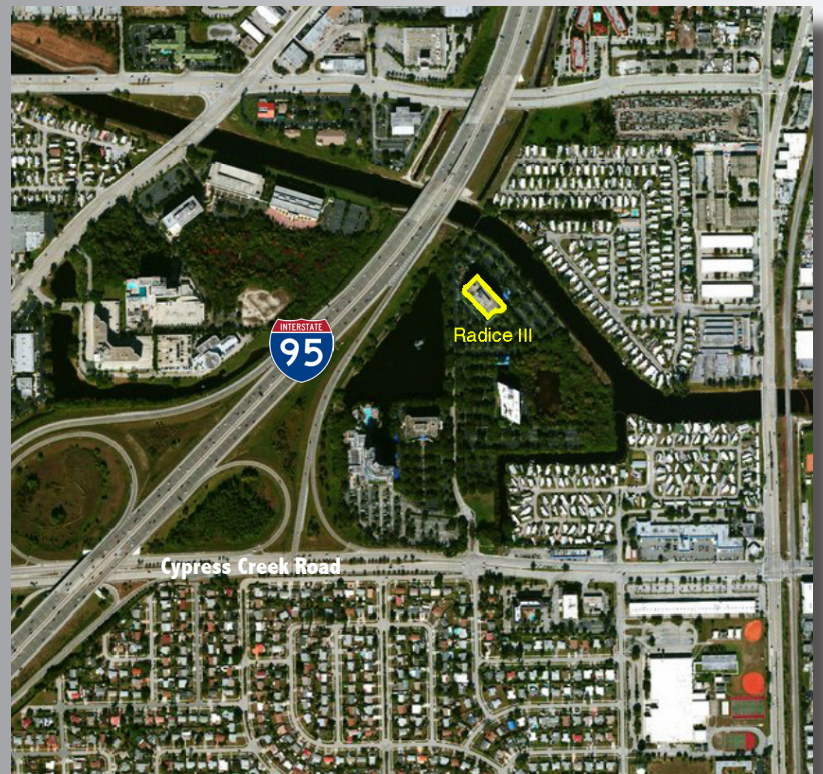


PROPERTY FEATURES

- Ideally located just east of I-95 in the heart of Cypress Creek
- Easy access to all major South Florida roadways
- Atrium lobby with marble accents, floor-to-ceiling windows and picturesque views
- Walking distance to a cafe and a two minute drive to many national restaurant chains
- Adjacent to Westin Hotel
- Ample parking: 4 spaces per 1,000 SF



Location Map



FOR MORE
INFORMATION
PLEASE
CONTACT

TYLER HARRISON
MANAGING PRINCIPAL
Equistone Partners

Office 954.239.7874
Direct 954.239.7842
tyler.harrison@equistone.com

EQUISTONE
COMMERCIAL REAL ESTATE PARTNERS