

Now Available for Lease:

PROFESSIONAL OFFICE/MEDICAL SPACE

2151 Shenango Valley Freeway | Hermitage, PA 16148



Professional Modern Décor | Beautiful Atrium | Interior & Exterior Signage

Suite Features:

- **Turn-key Ready:** New Paint & Flooring, New Energy Saving LED Lighting
- **HVAC:** New Tenant controlled HVAC

Call today to schedule a tour
or receive more information:

724-342-4580

Building Features:

- **Location:** Highly recognizable property with close proximity to I-376 & I-80
- **Management:** Active Property Management Team
- **Security:** After-hours Key Fob Access
- **Completely Renovated Building:** New Paint & Flooring, Energy Efficient LED Lighting, New Roof, New HVAC Units, and Updated exterior façade & landscaping



Locally Owned & Managed:



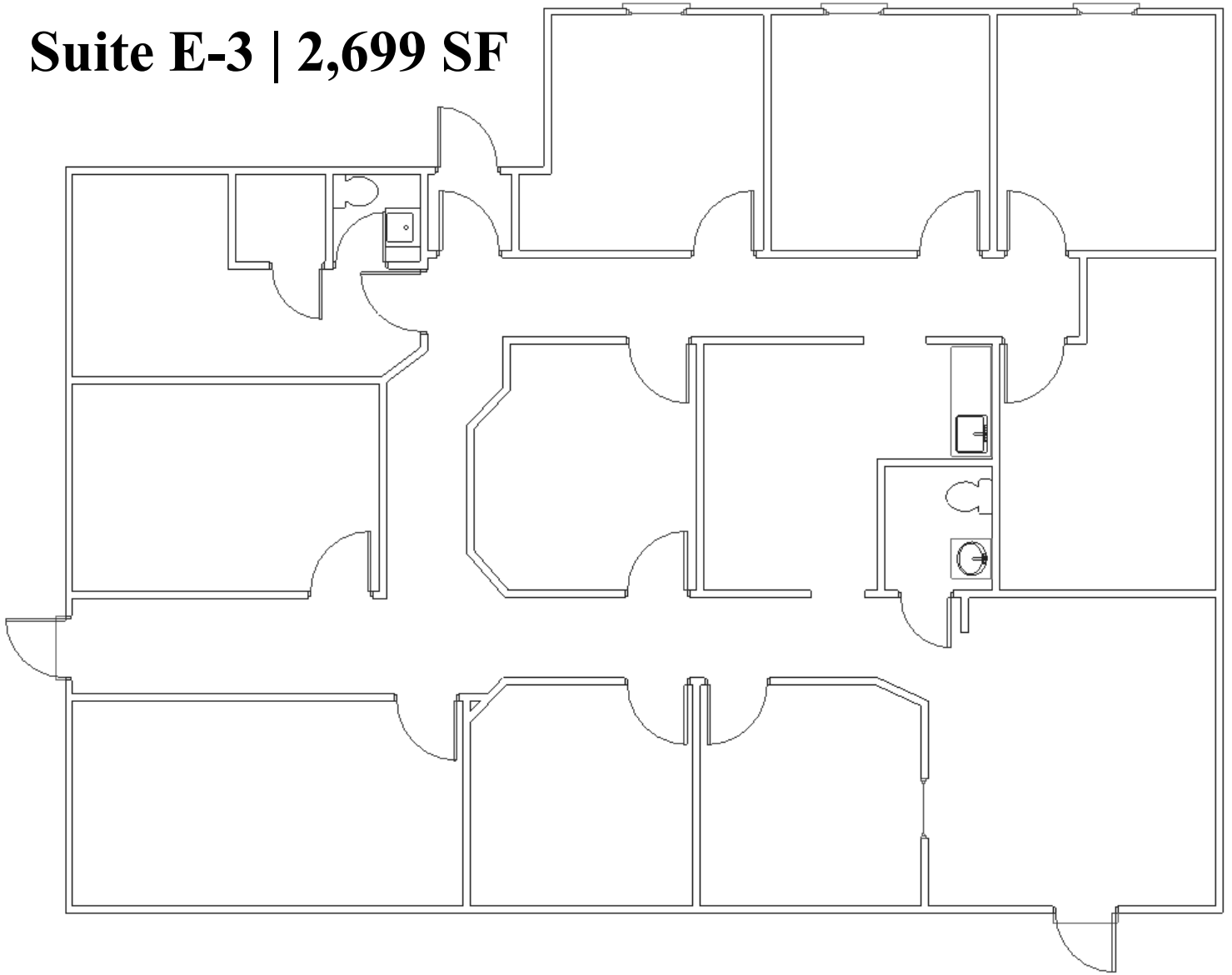
850 S. Hermitage Rd | Ste. B-1 | Hermitage | PA | 16148
Phone: 888-792-0308 | Fax: 724-342-4582

Now Available for Lease:

PROFESSIONAL OFFICE/MEDICAL SPACE

2151 Shenango Valley Freeway | Hermitage, PA 16148

Suite E-3 | 2,699 SF



Call today to schedule
a tour or receive more
information:

724-342-4580

