



LINCOLN
PROPERTY
COMPANY

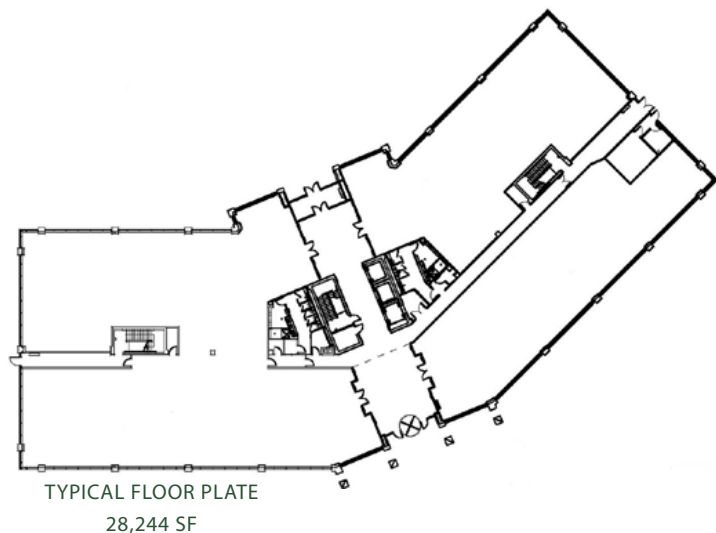
THE CAMPUS AT WATERVIEW

Waterview I - 8005 S. Chester St. | Waterview II - 9155 E. Nichols Ave. | Waterview III - 8000 S. Chester St.
Centennial, CO 80112

3 BUILDING CAMPUS

- Bordered by lakes, trails and an outdoor plaza
- Newly renovated common areas
- Class AA finishes throughout
- Unmatched walkable retail & dining amenities
- Parking 4.5:1,000 SF with covered parking available at market rate





TYPICAL FLOOR PLATE
28,244 SF

PROPERTY FEATURES

- Highly accessible location with immediate access to highways
- Walking distance to Dry Creek and Park Meadows Light Rail Stations
- Large efficient floor plates
- Outstanding views
- Diverse tenant mix including Cisco, Dell/EMC, Ring Central, Prudential, Stanley Consultants



AVAILABLE SUITES

Waterview I
100% Leased

Waterview II

- Suite 115: 3,130 rsf
- Suite 210: 2,157 rsf
- Suite 325: 1,759 rsf
- Suite 350: 3,114 rsf
- Suite 325/350: 4,873 rsf
- Suite 385: 4,449 rsf

Waterview III

- Suite 100: 12,958 rsf
- Suite 125: 6,094 rsf
- Suite 150: 4,068 rsf
- Entire 1st Floor: 25,306 rsf
- Suite 200: 16,189 or 18,685 rsf
- Suite 225: 1,558 rsf
- Suite 320: 5,066 rsf
- Suite 375: 7,602 rsf
- Suite 550: 3,717 rsf

CONTACT

Andrew Piepgras
Vice President
303 226 8209
apiepgras@lpc.com

Peter Thomas
Vice President
303 328 3235
pthomas@lpc.com



WATERVIEW II NEWLY RENOVATED LOBBY! **WATERVIEW III** LOBBY RENOVATIONS FALL 2018!



**LINCOLN
PROPERTY
COMPANY**

**LINCOLN
PROPERTY
COMPANY**

FOR ADDITIONAL INFORMATION,
PLEASE CONTACT:

Andrew Piepgras

303.226.8209

APiepgras@LPC.com

Peter Thomas

303.328.3235

PThomas@LPC.com

LINCOLN PROPERTY COMPANY

2000 South Colorado Blvd.

Annex - Suite 300

Denver, CO 80222

www.lpcdenver.com