

1100 OLD COUNTRY ROAD

PLAINVIEW, NY 11803

Aric Schachner

Managing Director, NYS Lic. Real Estate
Associate Broker
631.389.5500
aric.schachner@svn.com

Lorraine O'Hara

Licensed Real Estate Salesperson
631.389.0264
lorraine.ohara@svn.com

Property Summary



OFFERING SUMMARY

| | |
|----------------|-----------------------------|
| Available SF: | 7,000 SF |
| Lease Rate: | \$275,000 per year [NNN] |
| Lot Size: | 0.75 Acres |
| Building Size: | 7,000 SF |
| Power: | 400 amps, 3 phase |
| Traffic Count: | 31,080 |

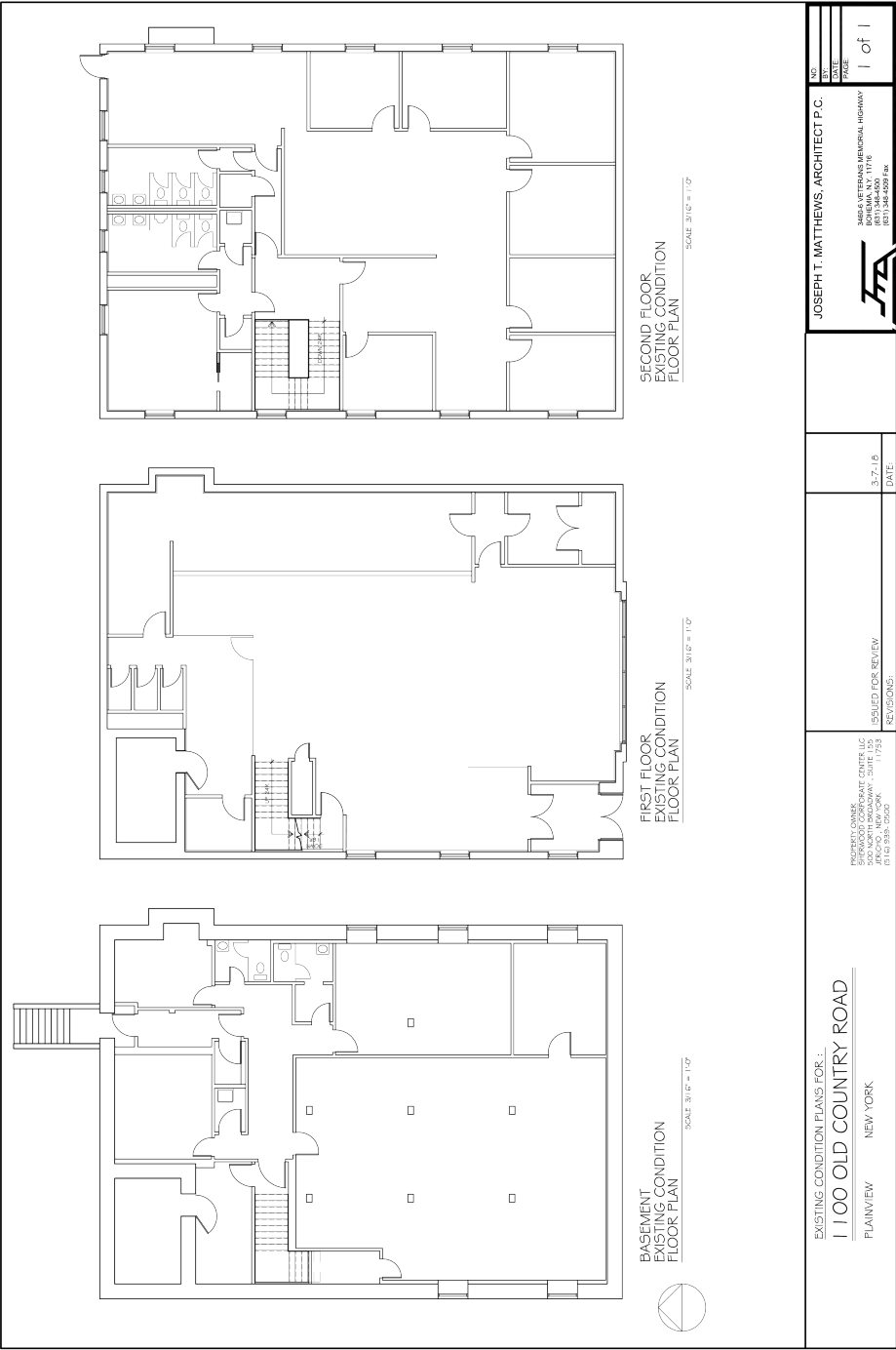
LOCATION OVERVIEW

- Located in the Town of Oyster Bay at the intersection of Old Country Road and Manetto Hill Rd.
- Major retail corridor.
- Large frontage and high traffic volume.
- Major regional malls located in the immediate vicinity.

PROPERTY HIGHLIGHTS

- 7000 SF Retail (Including 2nd Floor)
- 3500 SF Footprint
- Usable Basement (not included in SF)
- 0.75 Acre
- On Sewer
- Former Chase Bank

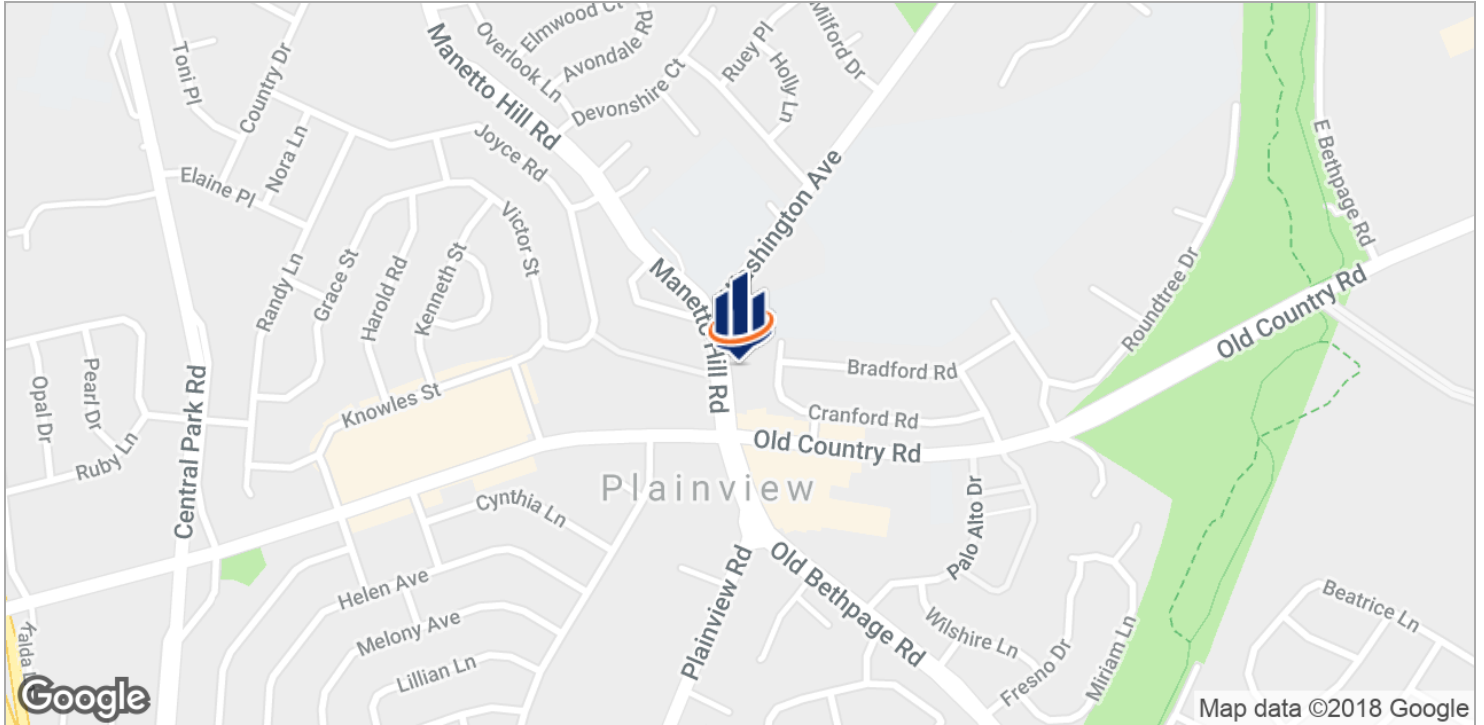
Floor Plans



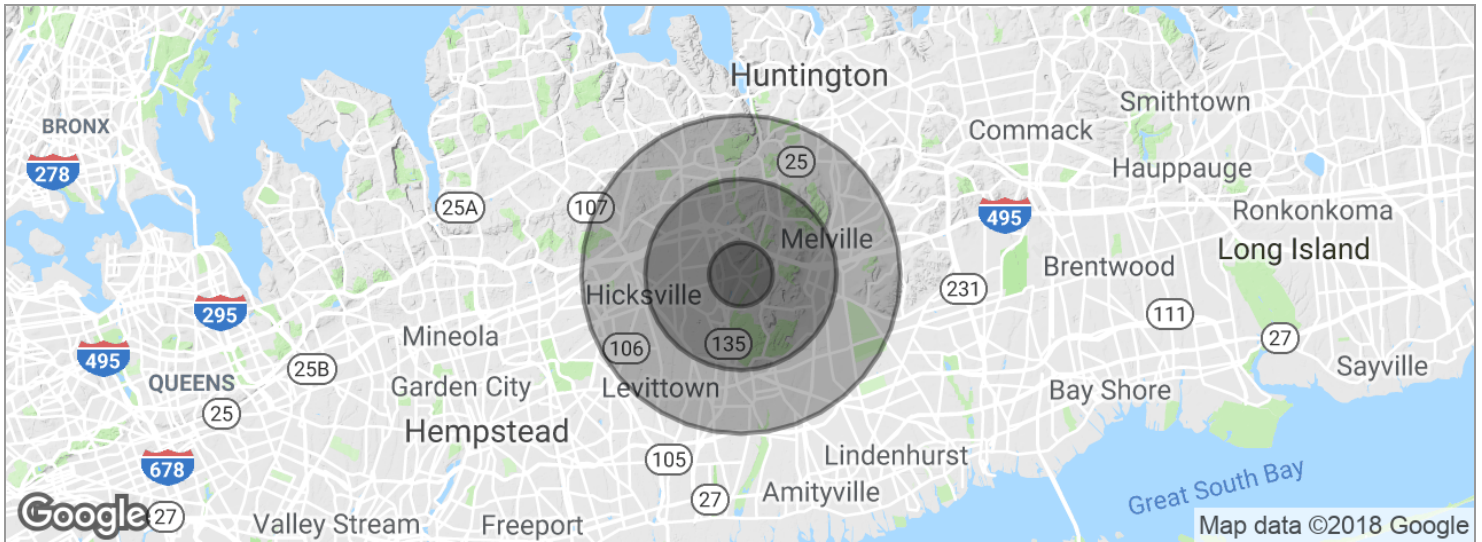
Aerial Map



Location Maps



Demographics Map



| POPULATION | 1 MILE | 3 MILES | 5 MILES |
|---------------------|-----------|-----------|-----------|
| Total population | 11,895 | 88,070 | 271,314 |
| Median age | 45.1 | 43.5 | 42.2 |
| Median age (male) | 43.7 | 42.1 | 40.6 |
| Median age (Female) | 46.7 | 44.8 | 43.7 |
| HOUSEHOLDS & INCOME | 1 MILE | 3 MILES | 5 MILES |
| Total households | 4,194 | 30,356 | 90,388 |
| # of persons per HH | 2.8 | 2.9 | 3.0 |
| Average HH income | \$134,935 | \$134,501 | \$124,426 |
| Average house value | \$614,024 | \$590,459 | \$555,325 |

* Demographic data derived from 2010 US Census