

CLICK FOR
VIDEO
TOUR



BELGRAVIA CONDO FOR LEASE

431 W Main Street, Boise, ID
SF AVAILABLE: 749 SF

PROPERTY HIGHLIGHTS

- Opportunity to Lease Historic Commercial Building in Belgravia in Downtown Boise
- Sandstone Walls
- Built in 1920
- Lower Level with Lots of Natural Light
- Updated Office/Retail Space
- Shared Patio Area
- Storage Unit Included
- Well-managed Condo Project
- Adjacent to Capitol Cellars Restaurant & Blue Sky Bagels
- Full, Updated Kitchen & Bathroom w/ Shower



AVAILABLE SPACE
749 SF



BUILDING SIZE
25,000 SF



ASKING RATE
\$22.00 SF/YR | (NNN)
\$1,373 Base Rent per Month



INTERMOUNTAIN
COMMERCIAL REAL ESTATE

JIM HOSAC
jim@icreboise.com
(208) 922-6681 office
(208) 850-8470 cell

www.icreboise.com | 380 E. Parkcenter Boulevard Suite 290, Boise, ID 83706 | (208) 429-8603 office

The information has been obtained from sources believed reliable and, while we do not doubt its reliability, ICRE has not verified it and makes no guarantees, warranties or representations, expressed or implied, as to its accuracy. All interested parties should conduct their own independent investigation and rely on those results.



EXECUTIVE SUMMARY

Available SF: **749 SF**

Lease Rate: **\$22.00 SF/YR**
\$1,373 Base Rent per Month

Lease Type: **NNN**

Building Class: **Historic**

Zoning: **C-5HD**

Market: **Downtown Boise**

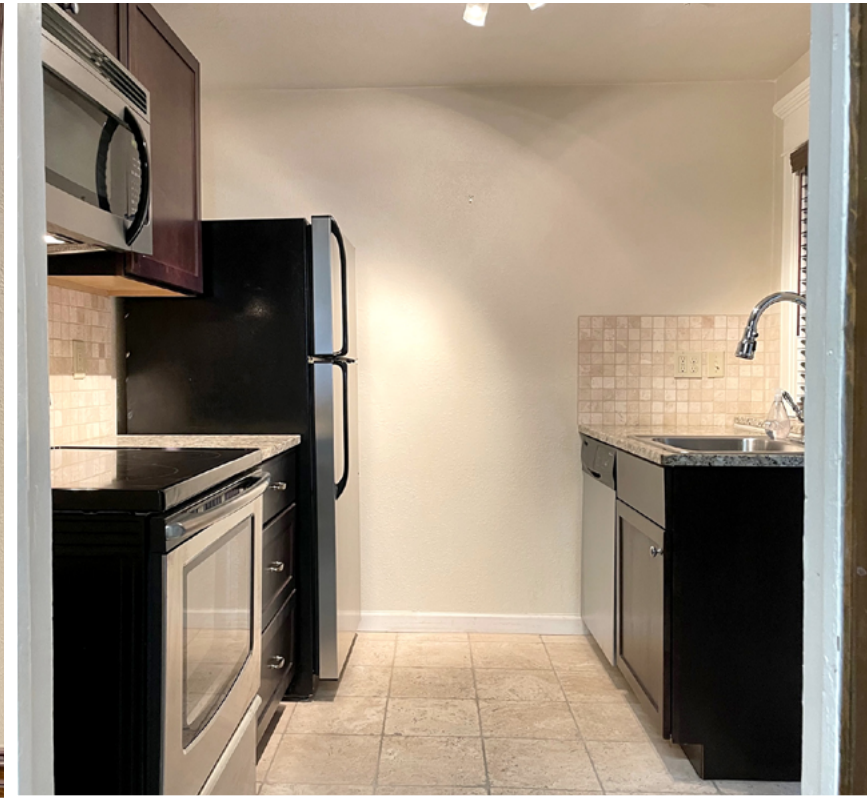
Cross Streets: **4th & Main Street**

Parking: **Public Parking**

Estimated NNN Expenses:

Currently \$500.00/month. (Includes all utilities except electric)





BELGRAVIA CONDO | 461 W MAIN, BOISE, ID



The information has been obtained from sources believed reliable and, while we do not doubt its reliability, ICRE has not verified it and makes no guarantees, warranties or representations, expressed or implied, as to its accuracy. All interested parties should conduct their own independent investigation and rely on those results.

