

PARKERS GROVE METHODIST CHURCH

4487 LINDEN ROAD • LINDEN • NC • 28356

CHURCH

PROPERTY HIGHLIGHTS

Price:	\$100,000
Size:	Church: 2,109 square feet Fellowship Hall: 1,817 square feet
Zoning:	A1 - Agricultural District
Frontage:	Approximately 364 feet
PIN:	0574-28-6072

PROPERTY DESCRIPTION

Beautiful church with 2,109 SF that seats 108 per fire code. Forced warm air furnace with electric AC. Built in 1920. The property has a detached 1817 square foot Fellowship Hall with propane gas pac. Organ to remain. Call for appointment.

HIGHLIGHTS

- 18 Pews
- Seats 108 per fire code
- Price includes church and fellowship hall with kitchen

All information is deemed reliable but not guaranteed



231 Fairway Drive
Fayetteville NC 28305
910-864-2626

Franklin Johnson Commercial Real Estate

Crawford MacKethan
910-977-2247
cbmackethan@aol.com

PARKERS GROVE METHODIST CHURCH

4487 LINDEN ROAD • LINDEN • NC • 28356

PROPERTY PHOTOS



231 Fairway Drive
Fayetteville NC 28305
910-864-2626

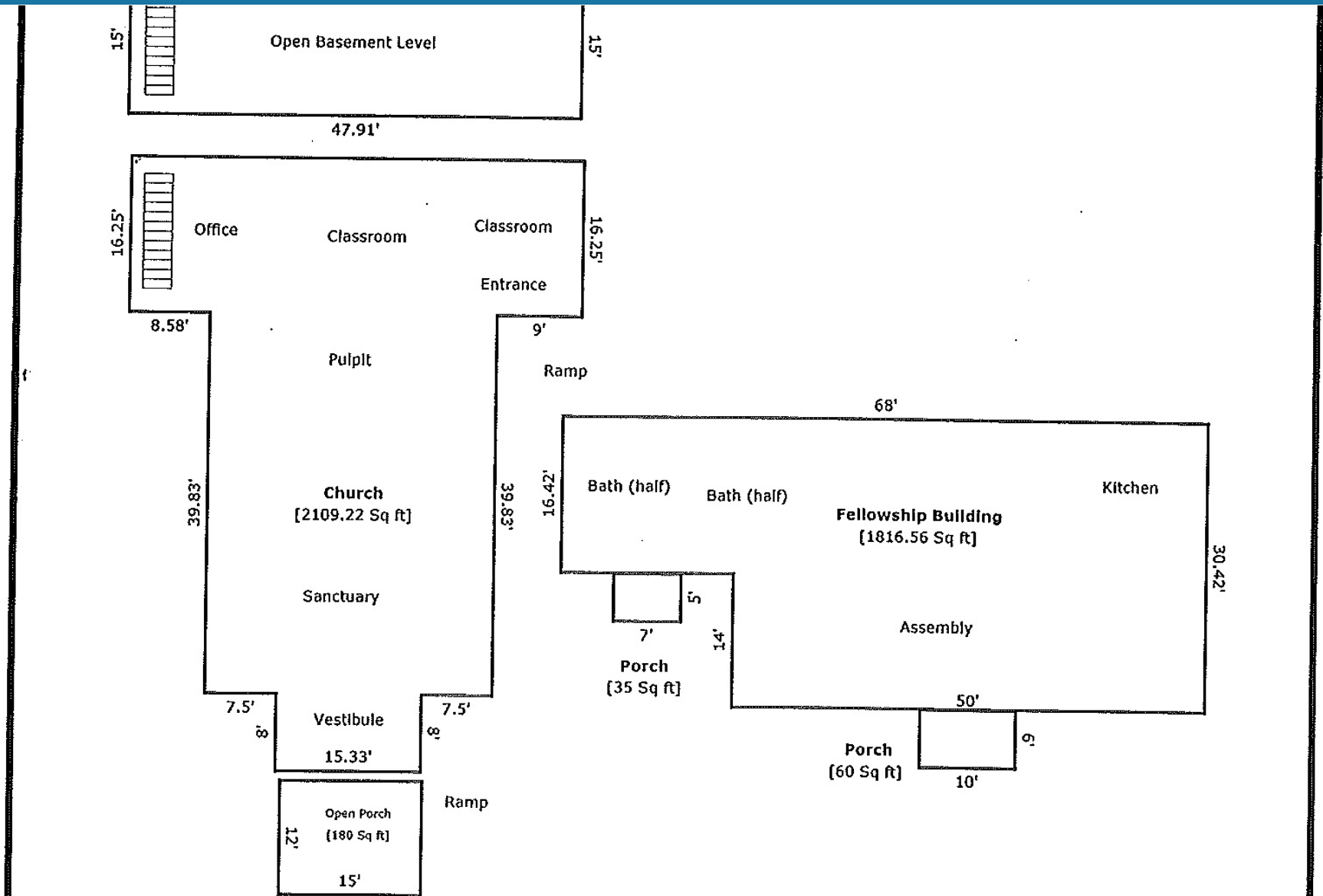
Franklin Johnson Commercial Real Estate

Crawford MacKethan
910-977-2247
cbmackethan@aol.com

PARKERS GROVE METHODIST CHURCH

4487 LINDEN ROAD • LINDEN • NC • 28356

PROPERTY PHOTOS



231 Fairway Drive
Fayetteville NC 28305
910-864-2626

Franklin Johnson Commercial Real Estate

Crawford MacKethan
910-977-2247
cbmackethan@aol.com