

STONEGATE AT NEW WINDSOR

Steele Road, Town of New Windsor, NY

BUILDING #1 ELEVATIONS

REVISIONS

DATE

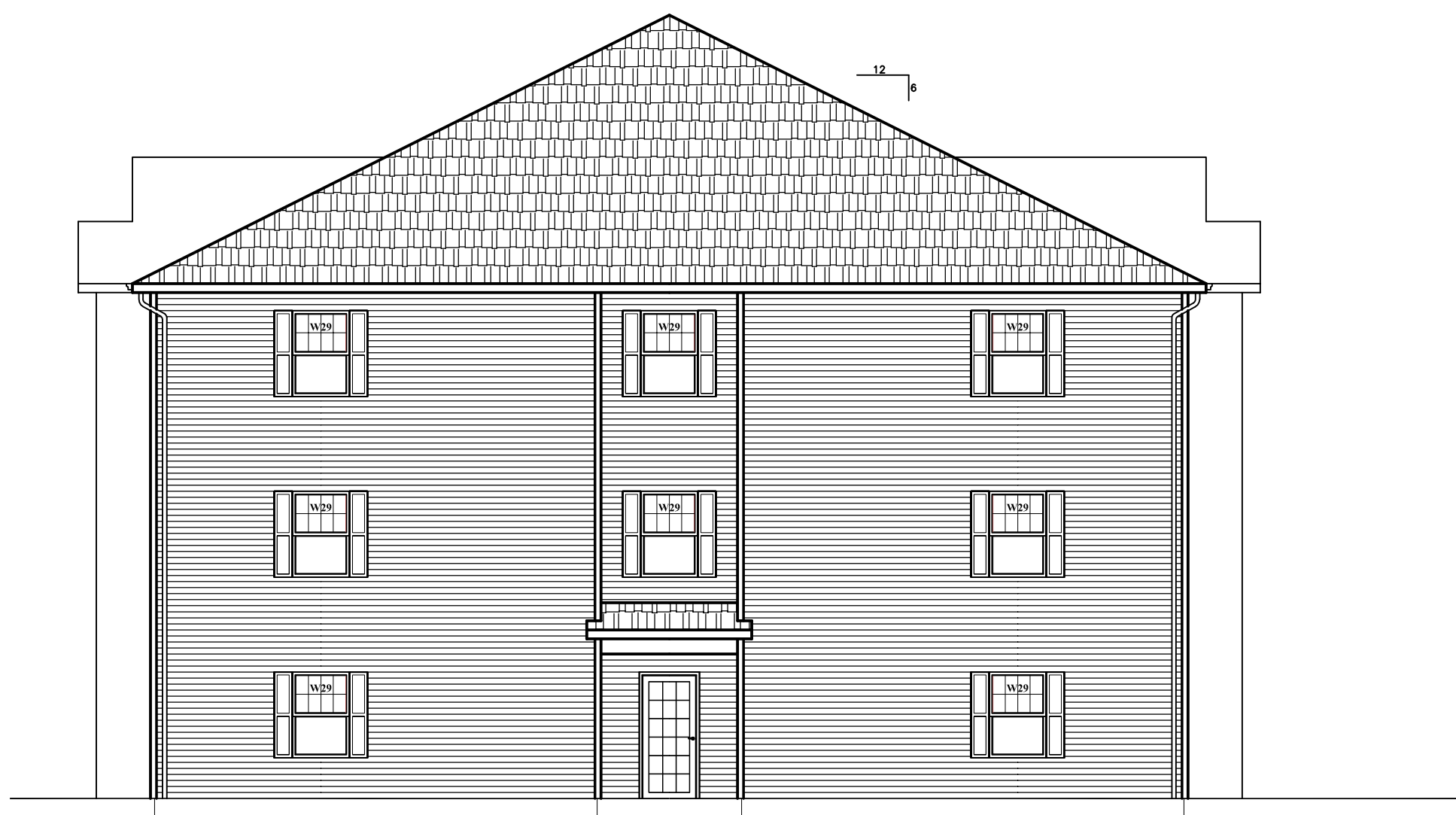
2/27/2013

PROJECT NUMBER

07-73

SHEET NUMBER

A1.3



1 Building #1 Typical Side Elevation
A1.3 Scale: 1/8" = 1'-0"



2 Building #1 North Elevation(Steele Road Side)
A1.3 Scale: 1/8" = 1'-0"

