

JAMESON.

COMMERCIAL

Retail | Medical

9392 BALLARD RD.

DES PLAINES, IL 60016

FOR LEASE

Unincorporated Cook County - For lease with 32 free surface parking spaces. Bright space with 8' windows. Excellent use for Retail or Medical. Between Dempster and Golf Rd. Four (4) blocks west of Advocate Lutheran General Hospital. Call agent for viewing.



PROPERTY HIGHLIGHTS

- » Newly Built
- » High Ceilings
- » Large Windows
- » 32 Parking Spaces
- » Great signage & visibility on signalized corner

AREA HIGHLIGHTS

- » Easy Access to 294 (Golf & Dempster)
- » Good traffic counts
- » Densely Populated Area

AREA TENANTS

- » Advocate Lutheran General Hospital
- » CVS
- » Home Depot
- » Dunkin Donuts
- » Lurvey Garden Center

SIZE	1,295 rsf	ZONED	C4
Parking	32	Tax / Cam	\$12 / sf (est.)
Unit	103	LEASE RATE	\$27.00 / SF Net

STATISTICS	0.5 Miles	1 Mile	3 Miles
Population	7,408	24,284	143,453
Households	2,718	9,178	54,826
Average HHI	\$108,737	\$111,672	\$126,655

JAMESON COMMERCIAL REAL ESTATE

425 West North Avenue | Chicago, IL 60610
www.jamesoncommercial.com

BRAD BENDERSKY // Broker Associate

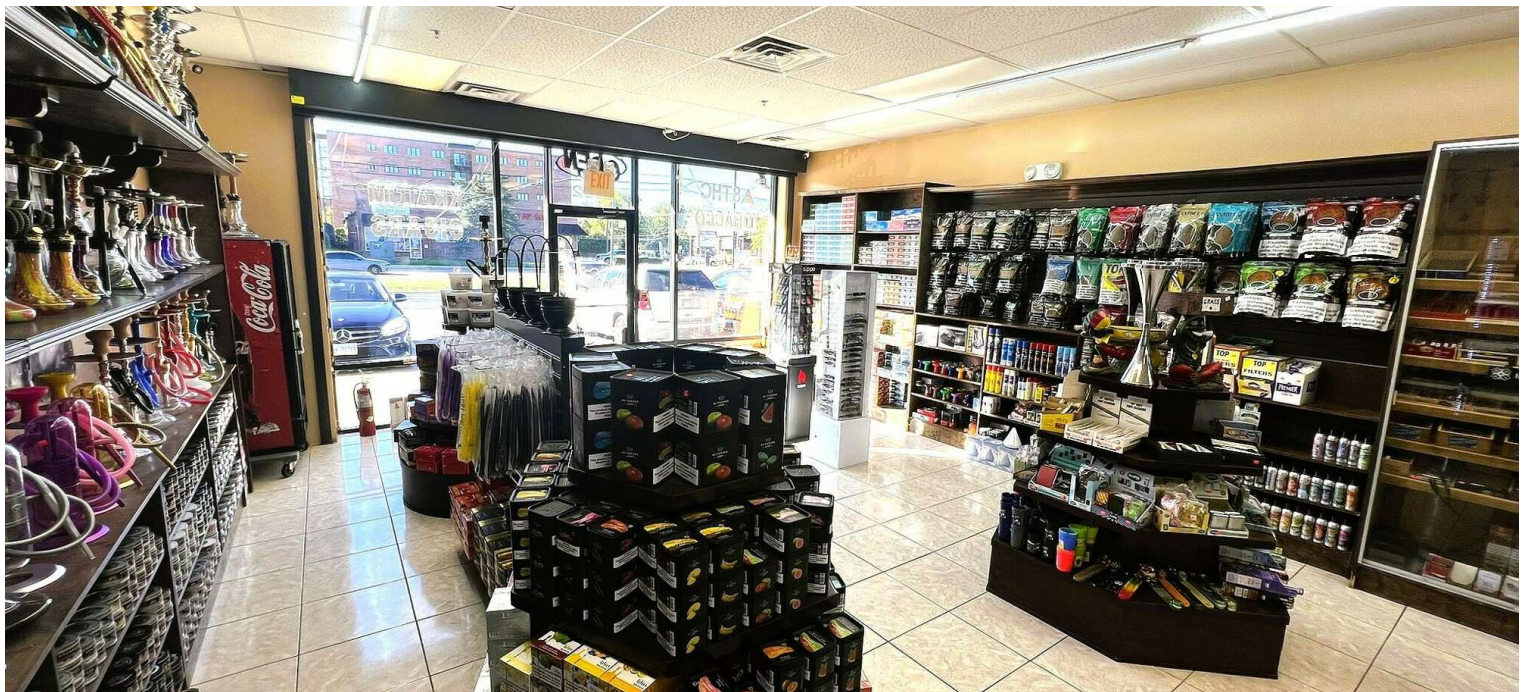
(P) 312.375.3355
bbendersky@jameson.com

©Jameson Real Estate LLC. All information provided herein is from sources deemed reliable. No representation is made as to the accuracy thereof & it is submitted subject to errors, omissions, changes, prior sale or lease, or withdrawal without notice. Projections, opinions, assumptions & estimates are presented as examples only & may not represent actual performance. Consult tax & legal advisors to perform your own investigation.

ADDITIONAL PHOTOS

9392 W. BALLARD RD.
DES PLAINES, IL 60016

JAMESON.



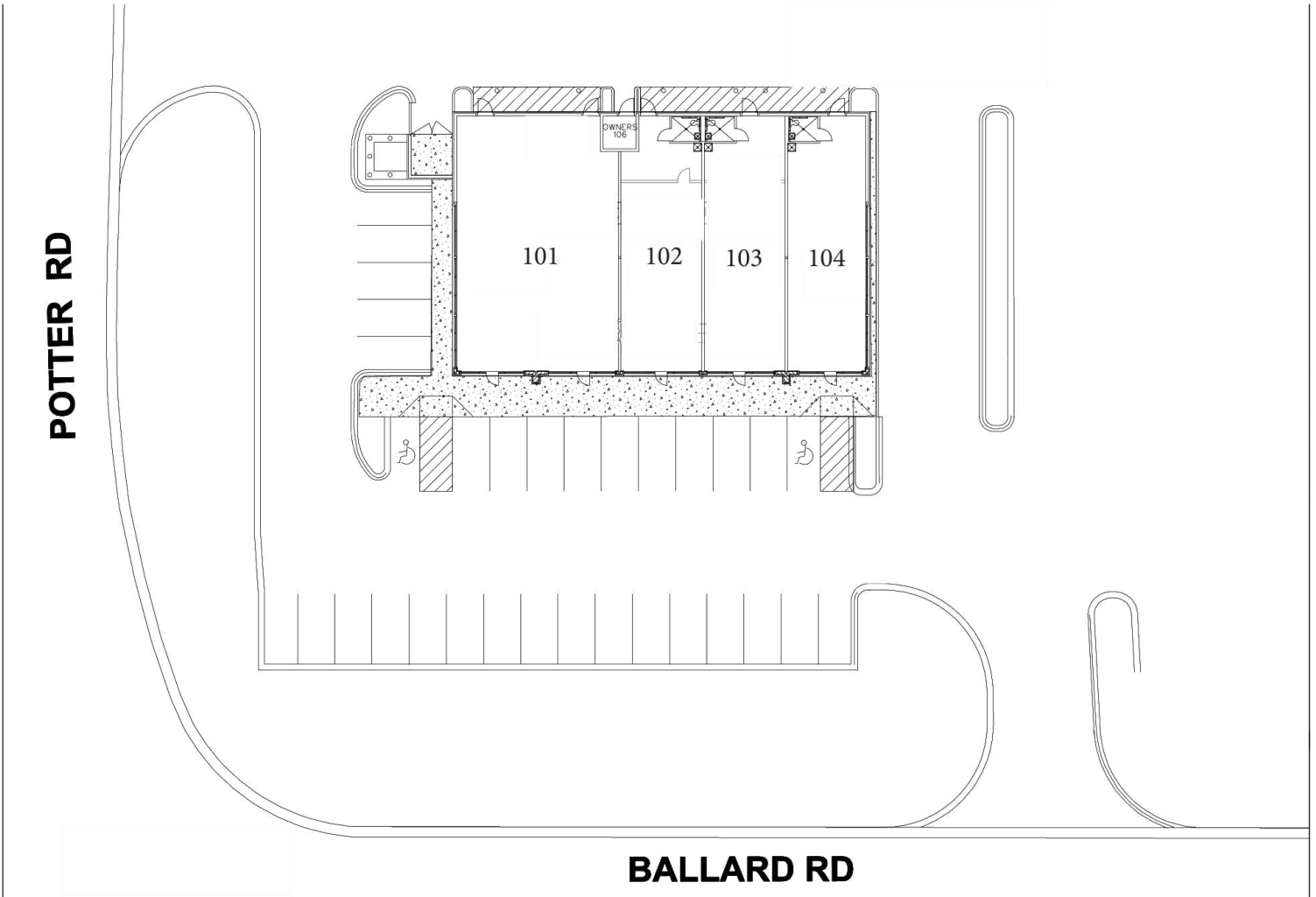
JAMESON COMMERCIAL REAL ESTATE
425 West North Avenue | Chicago, IL 60610
jamesoncommercial.com

©Jameson Real Estate LLC. All information provided herein is from sources deemed reliable. No representation is made as to the accuracy thereof & it is submitted subject to errors, omissions, changes, prior sale or lease, or withdrawal without notice. Projections, opinions, assumptions & estimates are presented as examples only & may not represent actual performance. Consult tax & legal advisors to perform your own investigation.

ADDITIONAL PHOTOS

9392 W. BALLARD RD.
DES PLAINES, IL 60016

JAMESON.

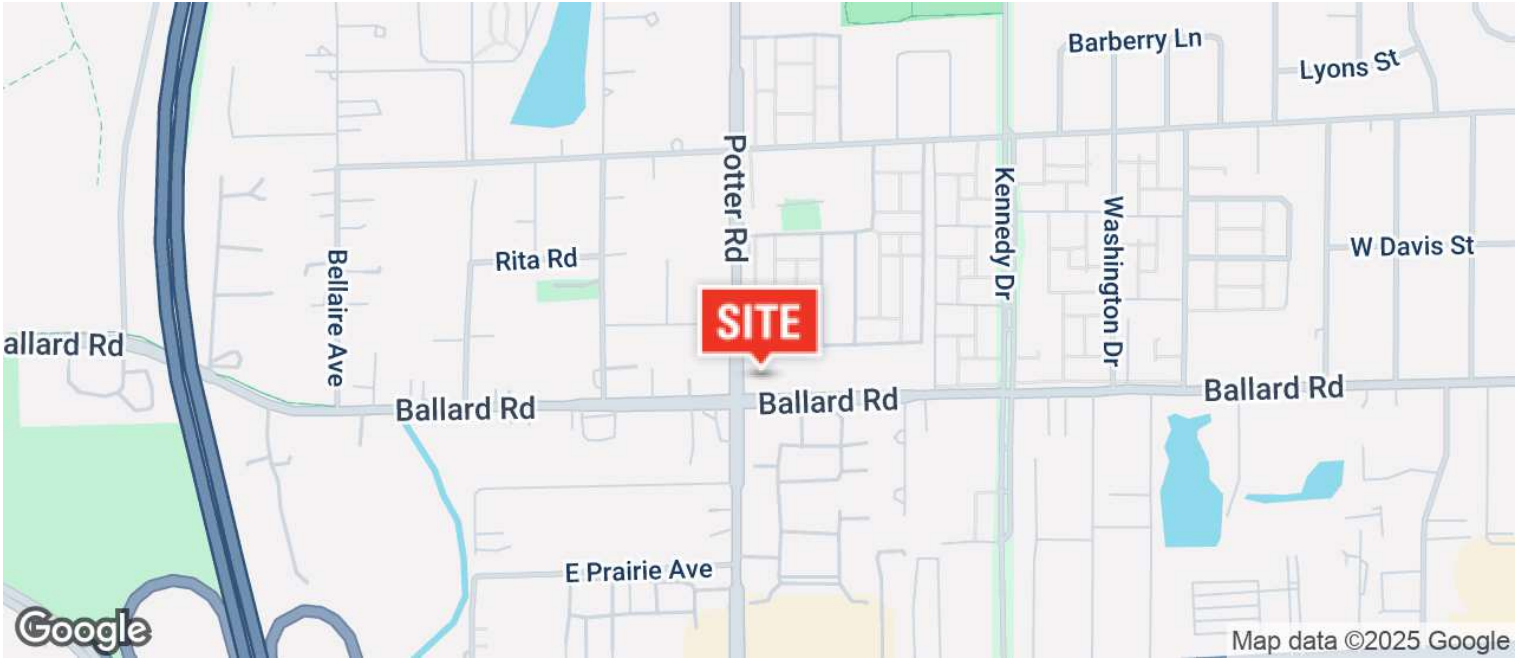


JAMESON COMMERCIAL REAL ESTATE
425 West North Avenue | Chicago, IL 60610
jamesoncommercial.com

©Jameson Real Estate LLC. All information provided herein is from sources deemed reliable. No representation is made as to the accuracy thereof & it is submitted subject to errors, omissions, changes, prior sale or lease, or withdrawal without notice. Projections, opinions, assumptions & estimates are presented as examples only & may not represent actual performance. Consult tax & legal advisors to perform your own investigation.

AERIAL & STREET DETAIL

9392 W. BALLARD RD.
DES PLAINES, IL 60016

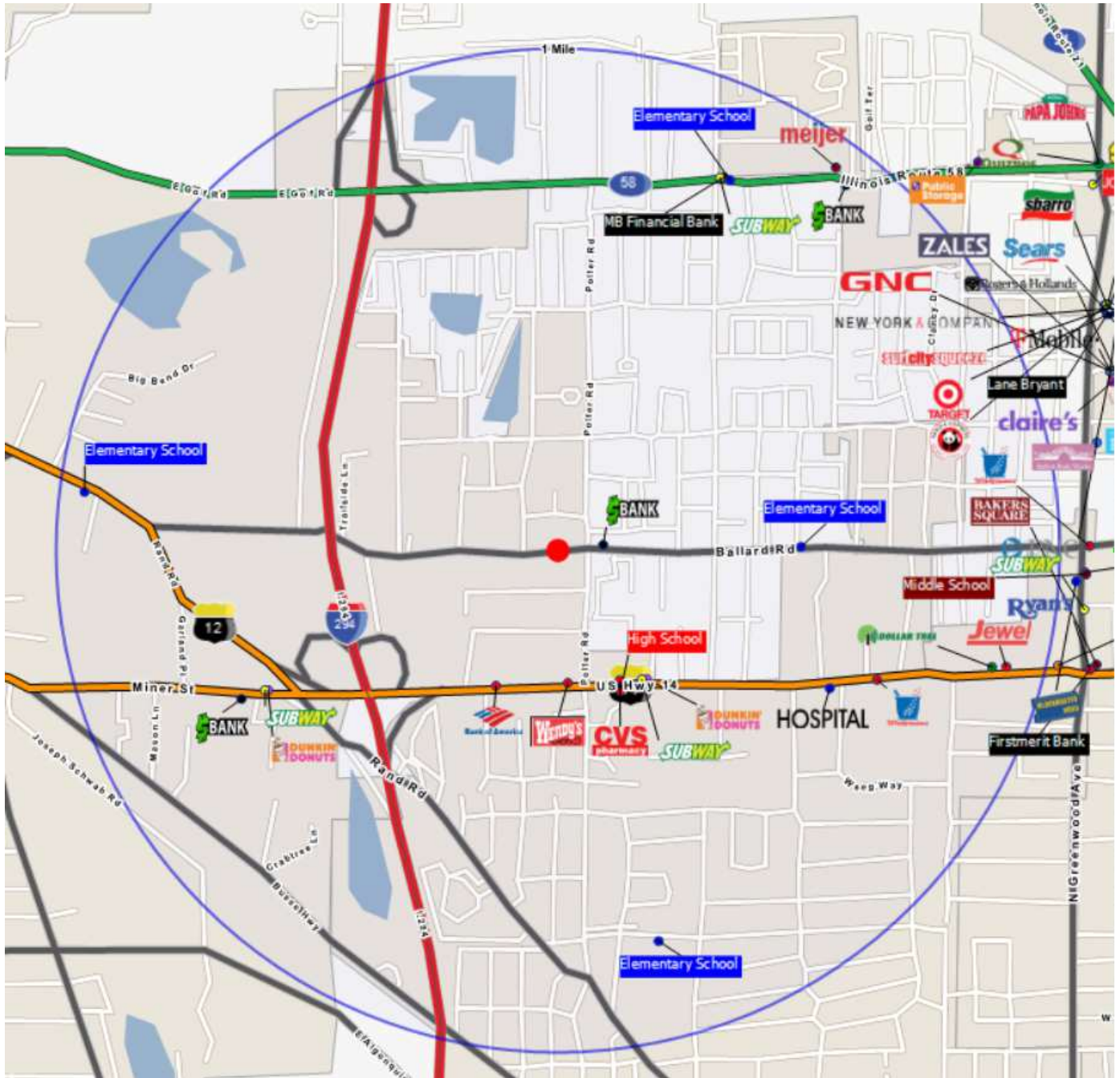


JAMESON COMMERCIAL REAL ESTATE
425 West North Avenue | Chicago, IL 60610
jamesoncommercial.com

©Jameson Real Estate LLC. All information provided herein is from sources deemed reliable. No representation is made as to the accuracy thereof & it is submitted subject to errors, omissions, changes, prior sale or lease, or withdrawal without notice. Projections, opinions, assumptions & estimates are presented as examples only & may not represent actual performance. Consult tax & legal advisors to perform your own investigation.

ADDITIONAL PHOTOS

9392 W. BALLARD RD.
DES PLAINES, IL 60016

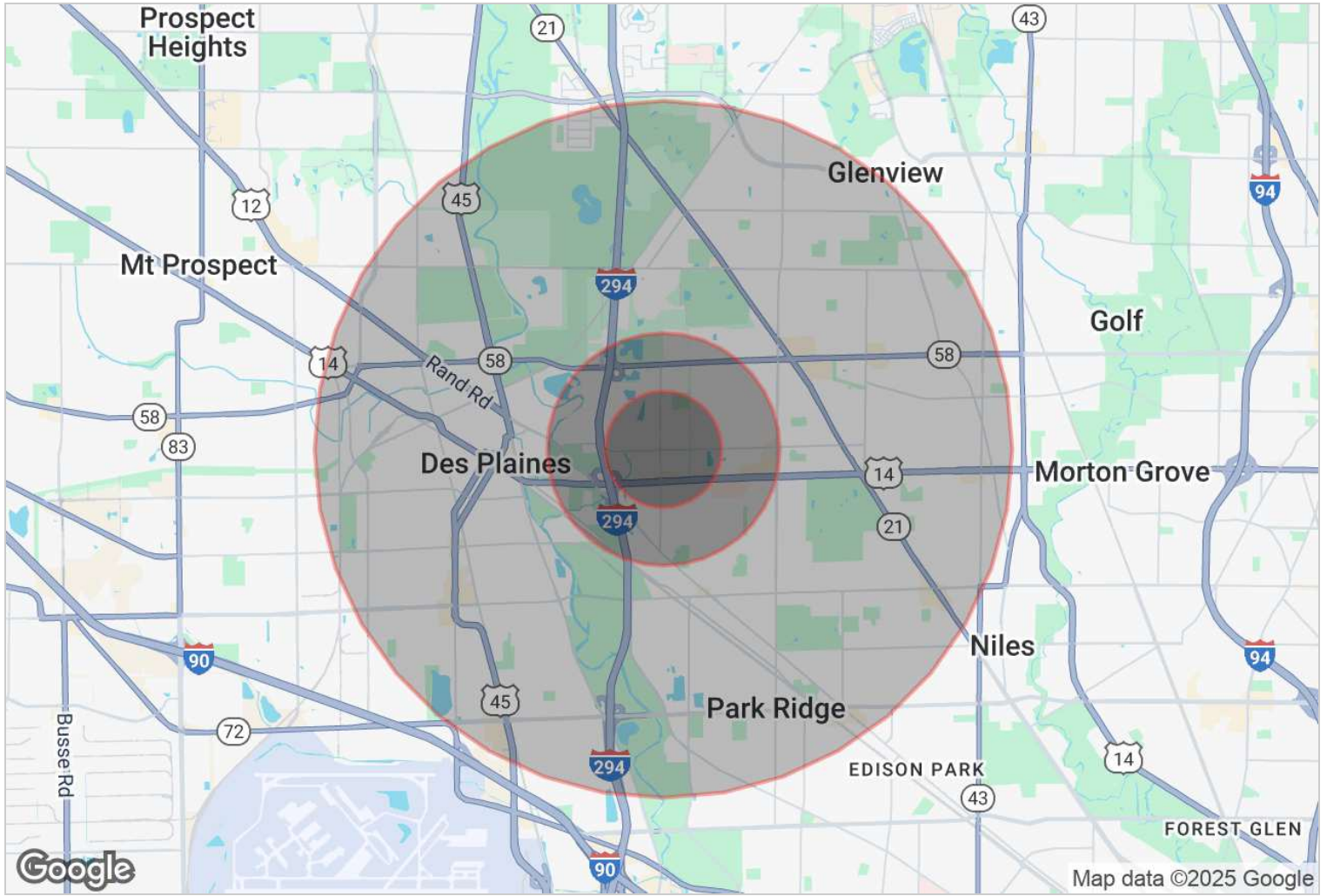


JAMESON COMMERCIAL REAL ESTATE
425 West North Avenue | Chicago, IL 60610
jamesoncommercial.com

©Jameson Real Estate LLC. All information provided herein is from sources deemed reliable. No representation is made as to the accuracy thereof & it is submitted subject to errors, omissions, changes, prior sale or lease, or withdrawal without notice. Projections, opinions, assumptions & estimates are presented as examples only & may not represent actual performance. Consult tax & legal advisors to perform your own investigation.

DEMOGRAPHICS MAP

9392 W. BALLARD RD.
DES PLAINES, IL 60016



2010 STATISTICS	0.5 Miles	1 Mile	3 Miles
Total Population	7,408	24,284	143,453
Total Number of Households	2,718	9,178	54,826
Average Household Income	\$108,737	\$111,672	\$126,655
Median Age	41	43	44

JAMESON COMMERCIAL REAL ESTATE
425 West North Avenue | Chicago, IL 60610
jamesoncommercial.com

©Jameson Real Estate LLC. All information provided herein is from sources deemed reliable. No representation is made as to the accuracy thereof & it is submitted subject to errors, omissions, changes, prior sale or lease, or withdrawal without notice. Projections, opinions, assumptions & estimates are presented as examples only & may not represent actual performance. Consult tax & legal advisors to perform your own investigation.

DEMOGRAPHICS REPORT

9392 W. BALLARD RD.
DES PLAINES, IL 60016

JAMESON.

DEMOGRAPHICS	0.5 Miles	1 Mile	3 Miles
TOTAL POPULATION	7,408	24,284	143,453
MEDIAN AGE	41	43	44
MEDIAN AGE (MALE)	39	41	42
MEDIAN AGE (FEMALE)	42	44	45
TOTAL HOUSEHOLDS	0.5 Miles	1 Mile	3 Miles
TOTAL HOUSEHOLDS	2,718	9,178	54,826
# OF PERSONS PER HH	2.7	2.6	2.6
AVERAGE HH INCOME	\$108,737	\$111,672	\$126,655
AVERAGE HOUSE VALUE	\$341,778	\$363,600	\$437,291

POPULATION	0.5 Miles	1 Mile	3 Miles
TOTAL POPULATION - White	2,944	11,697	88,840
TOTAL POPULATION - Black	438	1,053	3,927
TOTAL POPULATION - Hispanic	1,147	3,332	21,850
TOTAL POPULATION - Asian	2,866	8,079	28,251
TOTAL POPULATION - Hawaiian	0	3	27
TOTAL POPULATION - Indian	51	173	975
TOTAL POPULATION - Other	652	1,852	9,963

JAMESON COMMERCIAL REAL ESTATE
425 West North Avenue | Chicago, IL 60610
jamesoncommercial.com

©Jameson Real Estate LLC. All information provided herein is from sources deemed reliable. No representation is made as to the accuracy thereof & it is submitted subject to errors, omissions, changes, prior sale or lease, or withdrawal without notice. Projections, opinions, assumptions & estimates are presented as examples only & may not represent actual performance. Consult tax & legal advisors to perform your own investigation.