

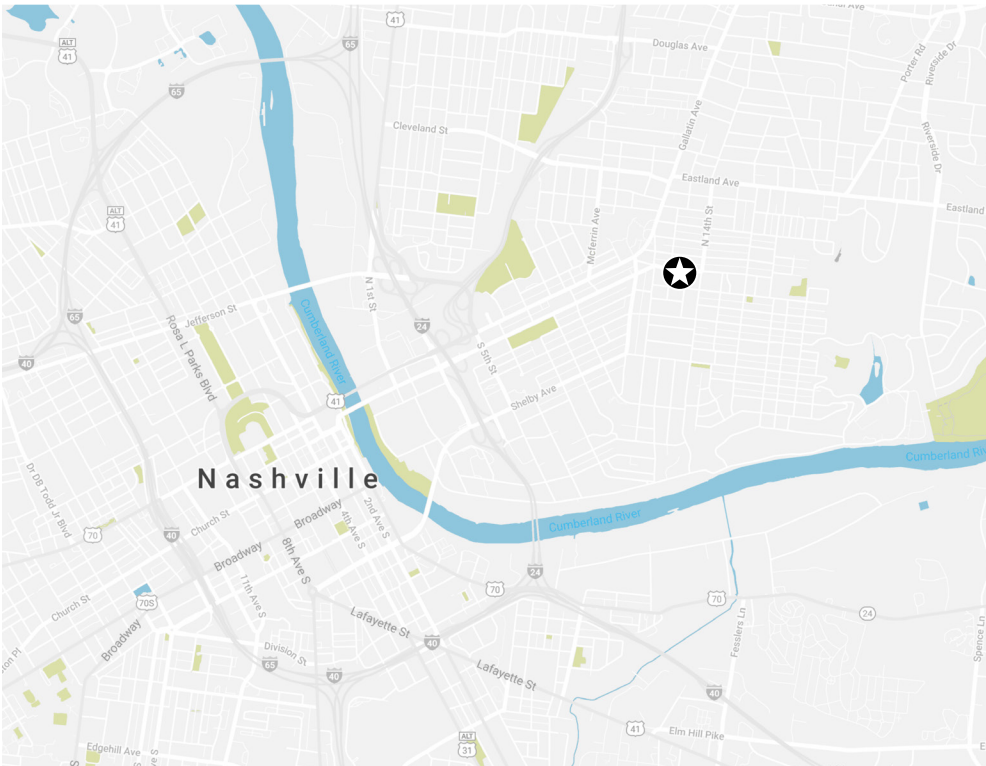


1106 WOODLAND

FOR LEASE | UP TO 8,500 SF | EAST NASHVILLE

FOUNDRY
COMMERCIAL

PROPERTY OVERVIEW



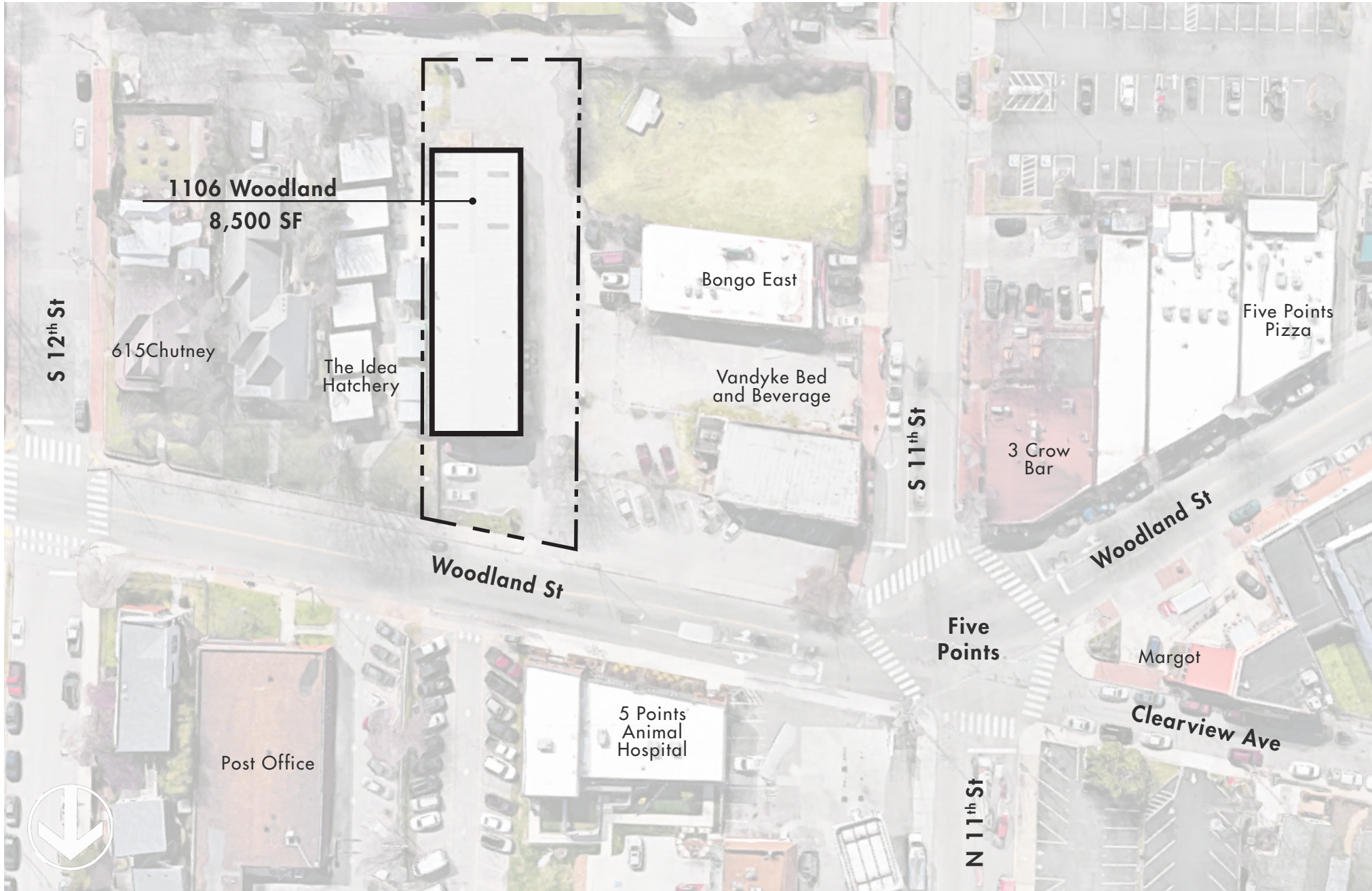
PROPERTY DETAILS

Address	1106 Woodland Street Nashville, Tennessee 37206
Sub Market	East Nashville, Five Points
Size	Up to 8,500 SF Demisable for multi-tenant use Mezzanine space available
Availability	Ready for tenant build out
Project Team	Center 615 Design 615 Foundry Commercial
Possible Uses	Creative Office Retail

PROPERTY HIGHLIGHTS

- Prime location at Five Points, the epicenter of East Nashville
- Less than half a mile to interstate access and Downtown Nashville
- Walkable immediate neighborhood - within one block of numerous restaurants, bars, coffee shops, and amenities
- Renovation and modern upgrades planned for the building
- Signage opportunity available
- Onsite and street parking available

SITE PLAN



AMENITY MAP

DINING + DRINKING

- | | | |
|------------------------------------|-----------------------|-------------------------------|
| 1 3 Crow Bar | 13 Cilantro | 25 Koi Sushi & Thai |
| 2 5 Points Tacos | 14 Clean Juice | 26 Marché Artisan Foods |
| 3 5 Spot | 15 Crying Wolf | 27 Margot |
| 4 615Chutney | 16 Drifters | 28 Nobles Kitchen & Beer Hall |
| 5 Attaboy | 17 Duke's Bar | 29 Pied Piper Creamery |
| 6 Basement East | 18 Edley's BBQ | 30 Red Door Saloon |
| 7 Batter'd & Fried | 19 Filling Station | 31 Smith & Lentz Brewing |
| 8 Bolton's Spicy Chicken & Fish | 20 Five Points Pizza | 32 Stay Golden Coffee |
| 9 Bongo East | 21 Greko Greek | 33 Tenn Sixteen |
| 10 BoomBozz Craft Pizza & Taphouse | 22 Hunters Station | 34 The Soda Parlor |
| 11 Burger Up | 23 I Dream of Wweenie | 35 Treehouse |
| 12 Butcher & Bee | 24 Kawaii Poke | 36 Yeast Nashville |

OFFICE + DEVELOPMENTS

- 37 Center 615
- 38 Hill Center Five Points
- 39 Wabash Building & 900 Main
- 40 WeWork

RESIDENTIAL + HOTEL

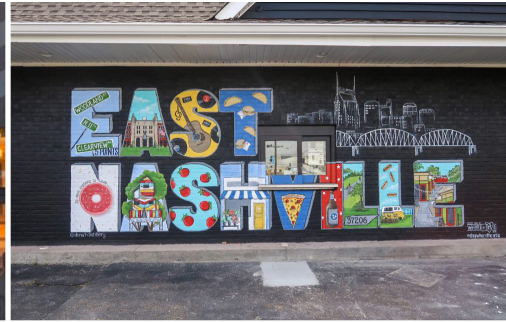
- 41 Amplify on Main Apartments
- 42 East End Lofts
- 43 Eastside Heights Apartments
- 44 Russell
- 45 Stacks on Main Apartments
- 46 Vandyke Bed & Beverage

WELLNESS + SERVICES

- 47 Candle Bar
- 48 Cumberland Hardware
- 49 Float Horizon
- 50 FLWR Shop
- 51 O.Liv Body Bar
- 52 Rudy's Barbershop
- 53 Scout's Barbershop
- 54 Sips & Strokes
- 55 Turnip Truck
- 56 Woodland Wine Merchant



THE NEIGHBORHOOD

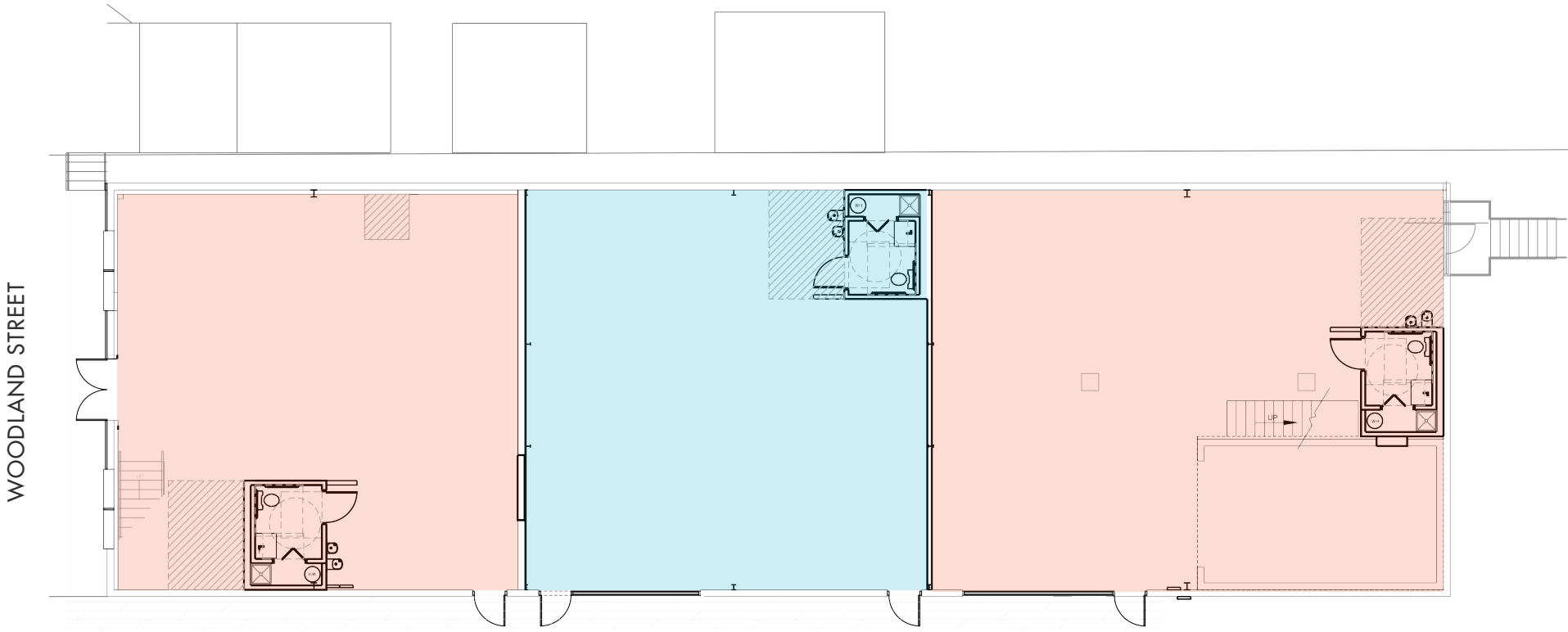


EAST NASHVILLE

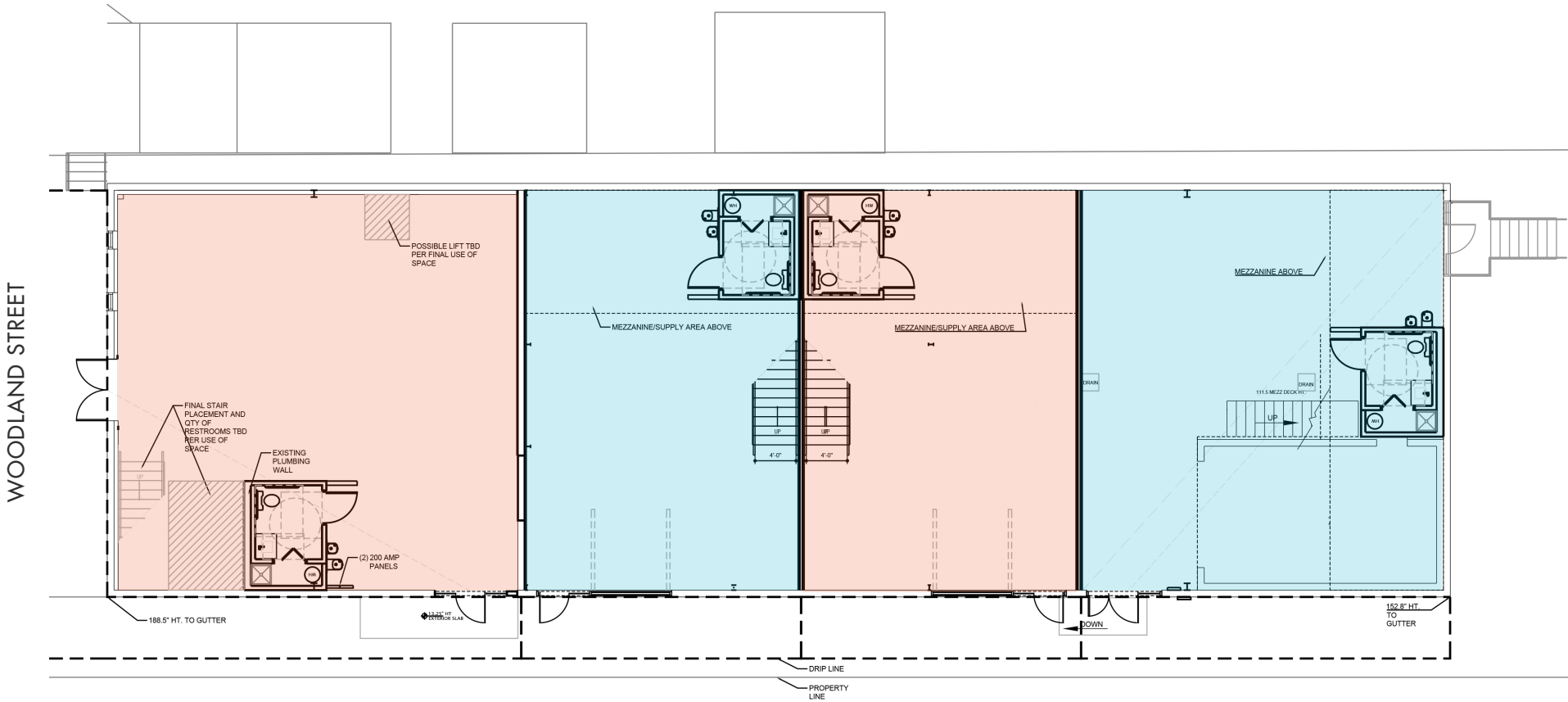
The growing, thriving, eclectic, historic, and hip East Nashville has become one of the city's most-desired areas to live, work, and play. Its low-key vibe and neighborly personality make this community a great place to escape without leaving town.



POTENTIAL LAYOUT FOR 3 TENANTS



POTENTIAL LAYOUT FOR 4 TENANTS



1106 WOODLAND STREET
NASHVILLE, TN

ANDREW MAXWELL

ANDREW.MAXWELL@FOUNDRYCOMMERCIAL.COM

615.324.0793

FOUNDRY
COMMERCIAL

foundrycommercial.com

615.997.0010

