

INDUSTRIAL FOR LEASE



508 Monterey Pass Rd, Unit A, Monterey Park, CA 91754

±8,640SF INDUSTRIAL BUILDING

PETER D. BACCI

SIOR Executive VP, Principal LIC NO 00946253

e pbacci@lee-associates.com

o 323.767.2022

MICHAEL H. TSAPARIAN

CCIM SIOR Executive VP, Principal LIC NO 00946253

e mtsaparian@lee-associates.com

o 323.767.2111

JP GORMLY

Vice President, Principal LIC NO 01921853

e jpgormly@lee-associates.com

o 323.767.2036

LOCAL EXPERTISE. INTERNATIONAL REACH. WORLD CLASS.

PROPERTY HIGHLIGHTS



DOCK HIGH & GROUND LEVEL LOADING



EASY ACCESS TO 710, 10 & 60 FWYS



ZONED FOR MULTIPLE USES

PRICING SUMMARY

LEASE RATE: \$1.45 PSF/MO GRS



INDUSTRIAL FOR LEASE

508 Monterey Pass Rd, Unit A, Monterey Park, CA 91754

±8,640SF INDUSTRIAL BUILDING

PETER D. BACCI

SIOR Executive VP, Principal LIC NO 00946253

e pbacci@lee-associates.com

o 323.767.2022

MICHAEL H. TSAPARIAN

CCIM SIOR Executive VP, Principal LIC NO 00946253

e mtsaparian@lee-associates.com

o 323.767.2111

JP GORMLY

Vice President, Principal LIC NO 01921853

e jpgormly@lee-associates.com

o 323.767.2036

The information contained herein is obtained from sources believed to be reliable. However, we have not verified it and make no guarantees, warranties or representations as to the completeness or accuracy thereof. The presentation of this property is used for example and is submitted subject to errors, omissions, change of price or conditions, and is subject to prior sale, lease or withdrawal without notice.

LOCAL EXPERTISE. INTERNATIONAL REACH. WORLD CLASS.



Lee & Associates - Los Angeles Central | CORP ID 01125429
5675 Telegraph Rd, Ste 300, Commerce, CA 90040

LEE-ASSOCIATES.COM

INDUSTRIAL FOR
LEASE

508 Monterey Pass Rd, Unit A, Monterey Park, CA 91754
±8,640SF INDUSTRIAL BUILDING

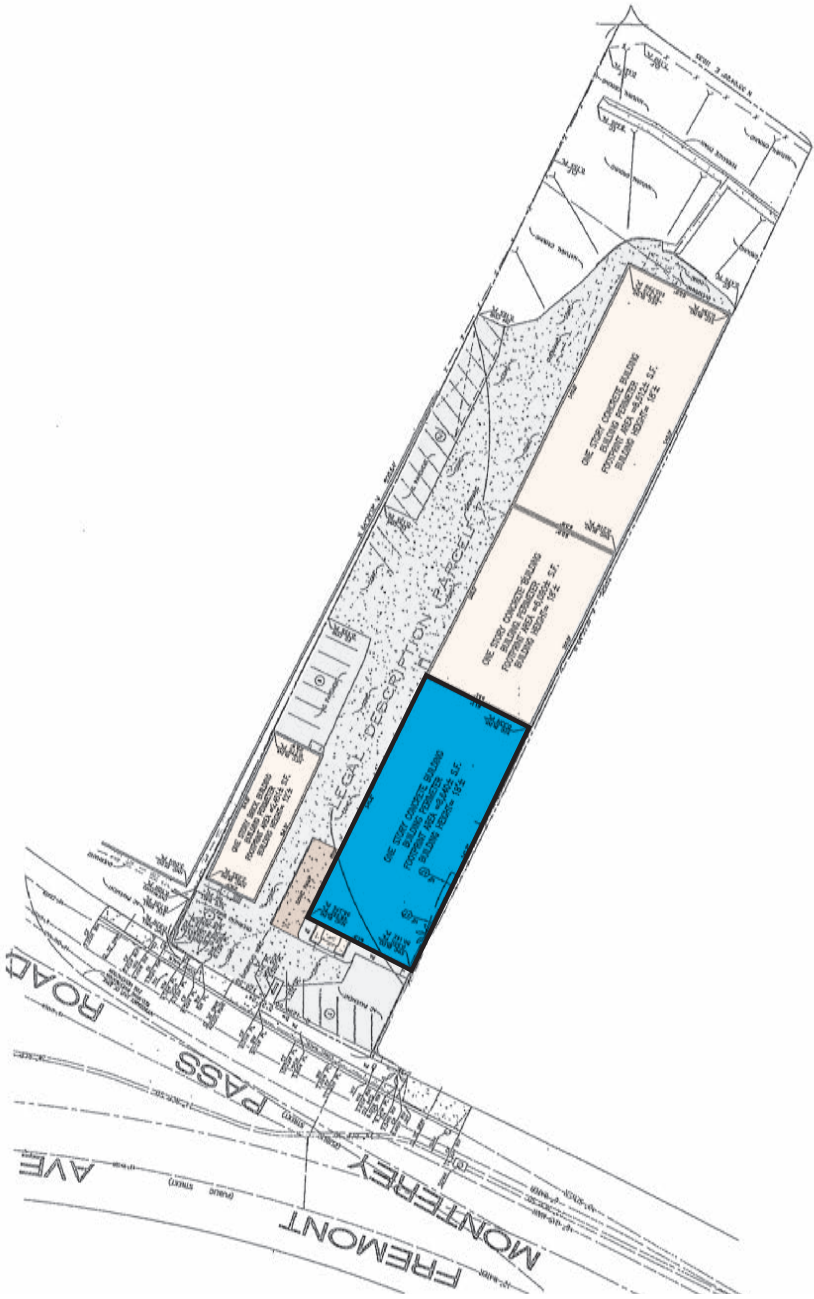
PROPERTY PHOTOS



PROPERTY HIGHLIGHTS

ADDRESS	508 Monterey Pass Rd, Unit A Monterey Park, CA 91754
BUILDING SIZE	±8,640 SF Unit that is POL Industrial Building
LAND SIZE	POL
PARCEL NUMBER	5261-001-042
PROPERTY TYPE	Industrial Warehouse, Storage
YEAR BUILT	1971
ZONING	Verify with City



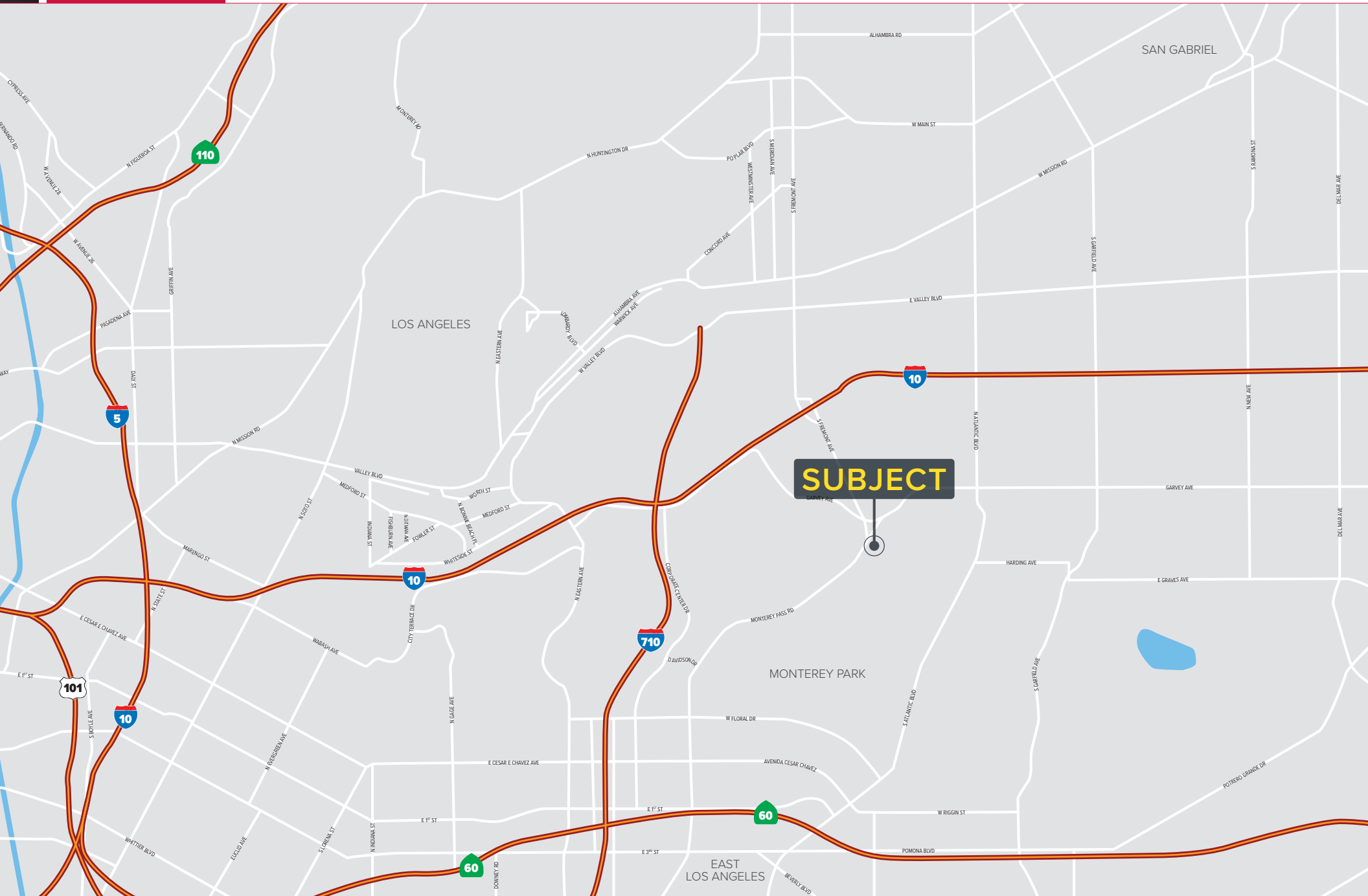


NOTE: Drawing not to scale. All measurements and sizes are approximate.

INDUSTRIAL FOR
LEASE

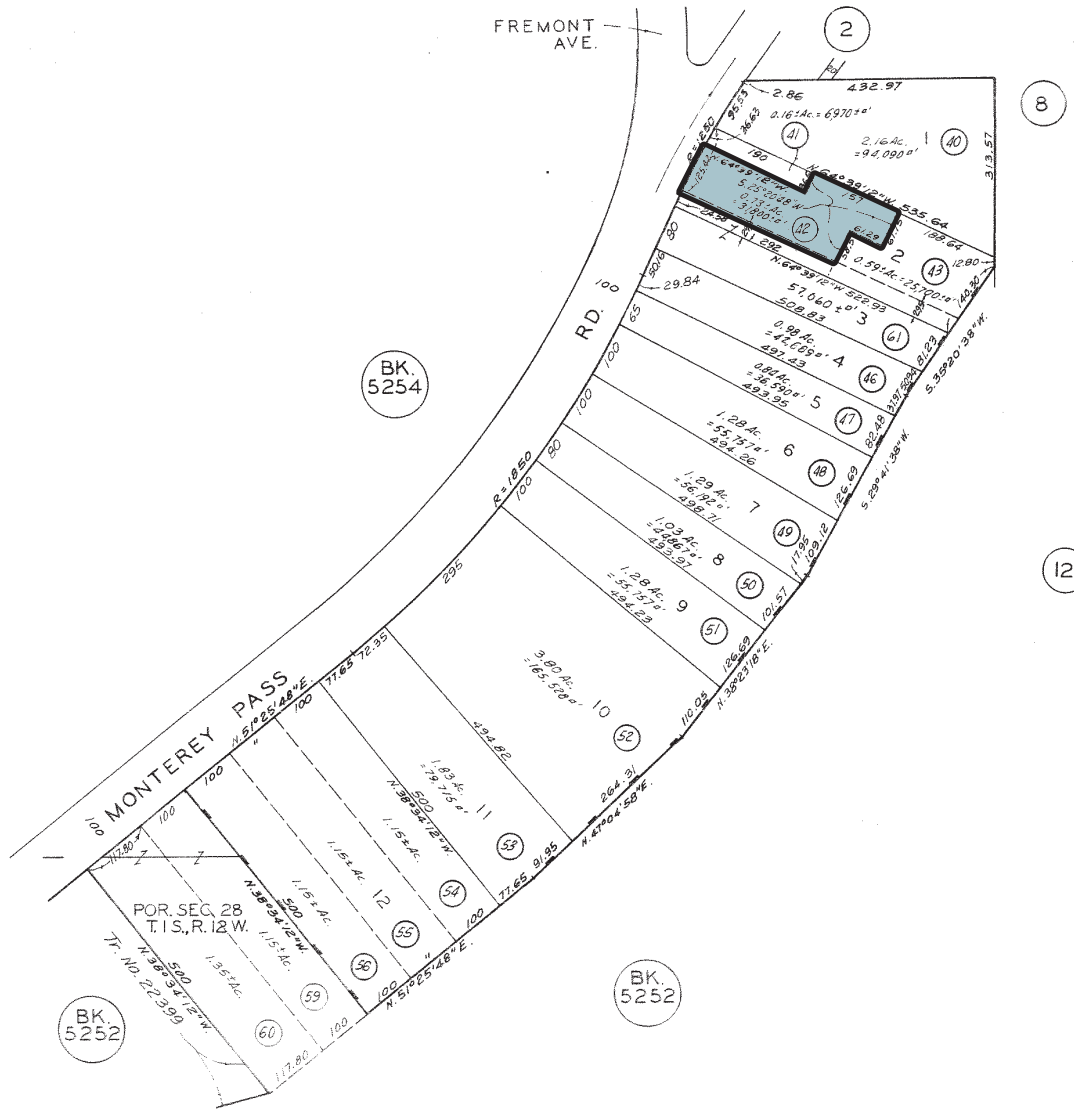
508 Monterey Pass Rd, Unit A, Monterey Park, CA 91754
±8,640SF INDUSTRIAL BUILDING

LOCATION MAP



5261 | 1
SCALE 1" = 200'

2007



690526002
750221-A,B-443
770117605
800391509
981207
2005042508003001-27

CODE
12385

FOR PREV ASSM'T SEE:
5261-39

REPETTO RANCHO D.M.759-21-22
L.A.C.A. MAP NO_66 A.M. 1-25

ADVERSE'S MAP
COUNTY OF LOS ANGELES, CALIF.