

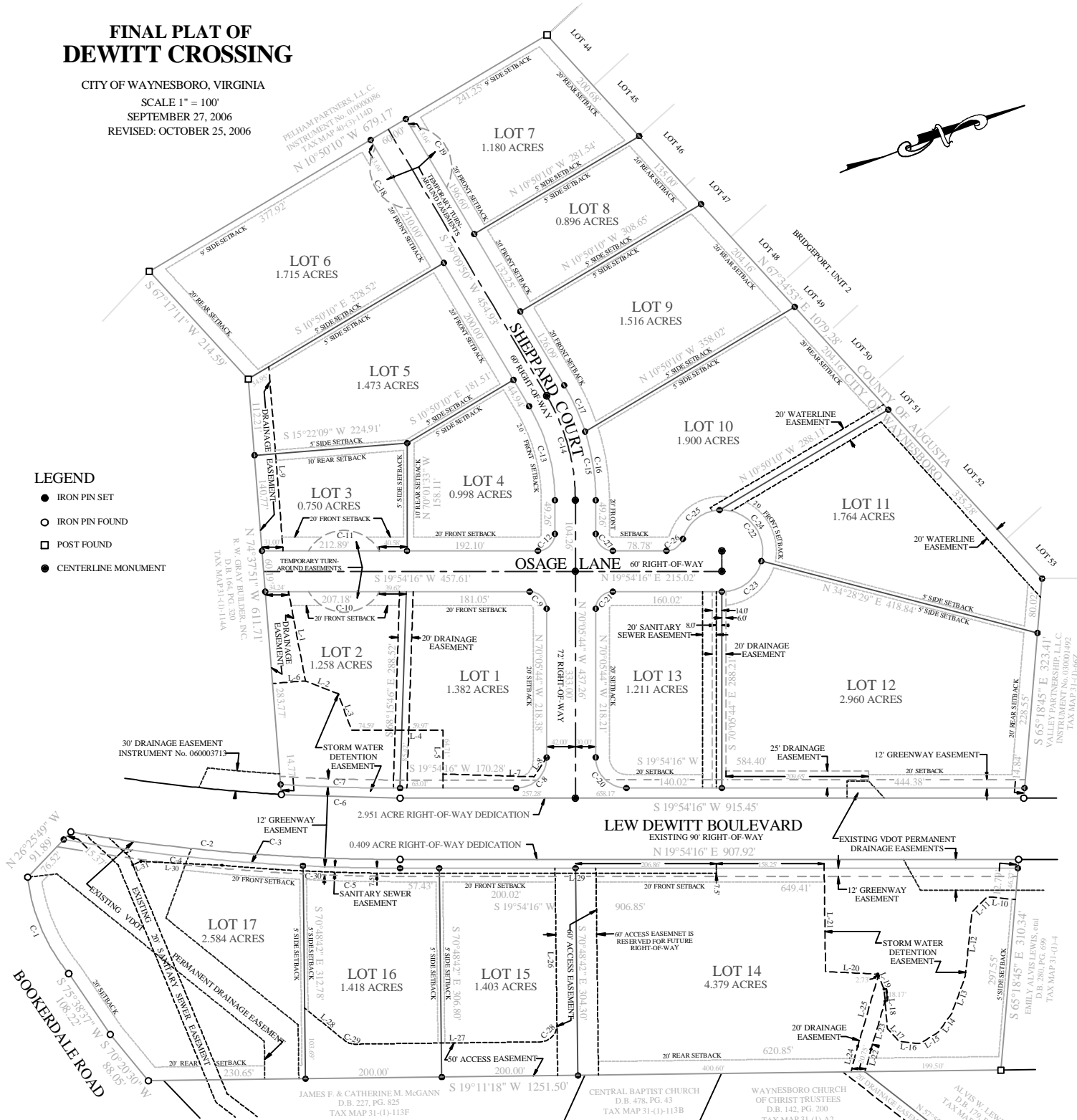
FINAL PLAT OF DEWITT CROSSING

CITY OF WAYNESBORO, VIRGINIA
 SCALE 1" = 100'
 SEPTEMBER 27, 2006
 REVISED: OCTOBER 25, 2006



LEGEND

- IRON PIN SET
- IRON PIN FOUND
- POST FOUND
- CENTERLINE MONUMENT



CURVE	RADIUS	ARC LENGTH	CHORD LENGTH	CHORD BEARING	DELTA ANGLE
C-1	271.56	156.00	153.87	S 86°47'57" W	32°54'54"
C-2	2909.79	485.55	484.99	S 24°41'06" W	09°33'39"
C-3	2922.53	496.30	495.70	S 24°41'06" W	09°33'47"
C-4	2922.53	353.61	353.39	S 26°10'05" W	06°55'57"
C-5	2922.53	142.69	142.68	S 21°18'11" W	02°47'51"
C-6	2819.79	174.45	174.43	S 21°40'37" W	03°32'41"
C-7	2805.17	175.63	175.60	S 21°41'53" W	03°35'14"
C-8	45.00	70.69	63.64	S 25°05'44" E	90°00'00"
C-9	25.00	39.27	35.36	N 64°54'16" E	90°00'00"
C-10	60.00	125.66	103.92	S 19°54'16" W	120°00'00"
C-11	60.00	125.66	103.92	N 19°54'16" E	120°00'00"
C-12	25.00	39.27	35.36	S 25°05'44" E	90°00'00"
C-13	270.00	144.86	143.13	S 85°27'57" E	30°44'26"
C-14	300.00	160.96	159.03	S 85°27'57" E	30°44'26"
C-15	330.00	177.05	174.94	S 85°27'57" E	30°44'26"
C-16	330.00	102.51	102.10	S 78°59'40" E	17°47'52"
C-17	330.00	74.55	74.39	N 85°38'07" E	12°56'34"
C-18	60.00	125.66	103.92	S 79°09'50" E	120°00'00"
C-19	60.00	125.66	103.92	N 79°09'50" E	120°00'00"
C-20	45.00	70.69	63.64	S 64°54'16" W	90°00'00"
C-21	25.00	39.27	35.36	N 25°05'44" W	90°00'00"
C-22	60.00	264.83	96.53	N 73°27'24" E	252°53'43"
C-23	60.00	78.99	73.41	S 17°48'37" E	75°25'47"
C-24	60.00	112.78	96.89	N 70°37'43" E	107°41'34"
C-25	60.00	73.07	68.63	N 18°06'16" W	69°46'23"
C-26	25.00	31.81	29.70	S 16°32'36" E	72°53'43"
C-27	25.00	39.27	35.36	S 64°54'16" W	90°00'00"
C-28	25.00	39.27	35.36	S 25°48'42" E	90°00'00"
C-29	25.00	17.29	16.95	S 39°00'10" W	39°37'43"
C-30	2930.03	261.75	261.66	S 22°27'49" W	05°07'06"

LINE	BEARING	DISTANCE
L-1	S 80°48'04" E	133.23
L-2	N 41°06'58" E	51.67
L-3	S 89°54'24" E	56.76
L-4	N 19°54'16" E	134.56
L-5	S 70°05'44" W	85.38
L-6	S 15°22'09" W	48.46
L-7	N 21°33'30" E	133.47
L-8	N 36°18'28" W	33.91
L-9	S 74°32'04" E	270.87
L-10	S 25°47'54" W	40.93
L-11	S 24°09'38" E	31.81
L-12	S 64°14'49" E	94.82
L-13	S 50°08'54" E	58.40
L-14	S 34°26'47" E	33.47
L-15	S 11°51'07" E	32.14
L-16	S 25°28'08" W	30.33

LINE	BEARING	DISTANCE
L-17	S 67°41'54" W	26.30
L-18	N 74°45'11" W	57.79
L-19	S 86°32'48" W	23.85
L-20	S 22°41'52" W	76.63
L-21	N 70°48'42" W	151.83
L-22	N 55°19'47" W	33.60
L-23	S 53°45'06" E	73.26
L-24	N 55°19'47" W	39.42
L-25	S 53°45'06" E	106.75
L-26	S 70°48'42" E	229.61
L-27	S 19°11'18" W	271.16
L-28	S 58°49'01" W	75.17
L-29	S 19°54'16" W	464.30
L-30	S 22°37'56" W	119.33
L-31	S 02°31'00" E	12.77

LOTS, AUSTIN & ASSOCIATES
 SURVEYING * ENGINEERING * PLANNING, P.C.
 21 CAMBRIDGE DRIVE
 P.O. BOX 1167
 STUARTS DRAFT, VIRGINIA
 TELEPHONE (540) 943-0012 FAX (540) 932-1712
 JOB No. 05-4445 PLOT: 4445PLATREVISE1.DWG S:PROJECTS

