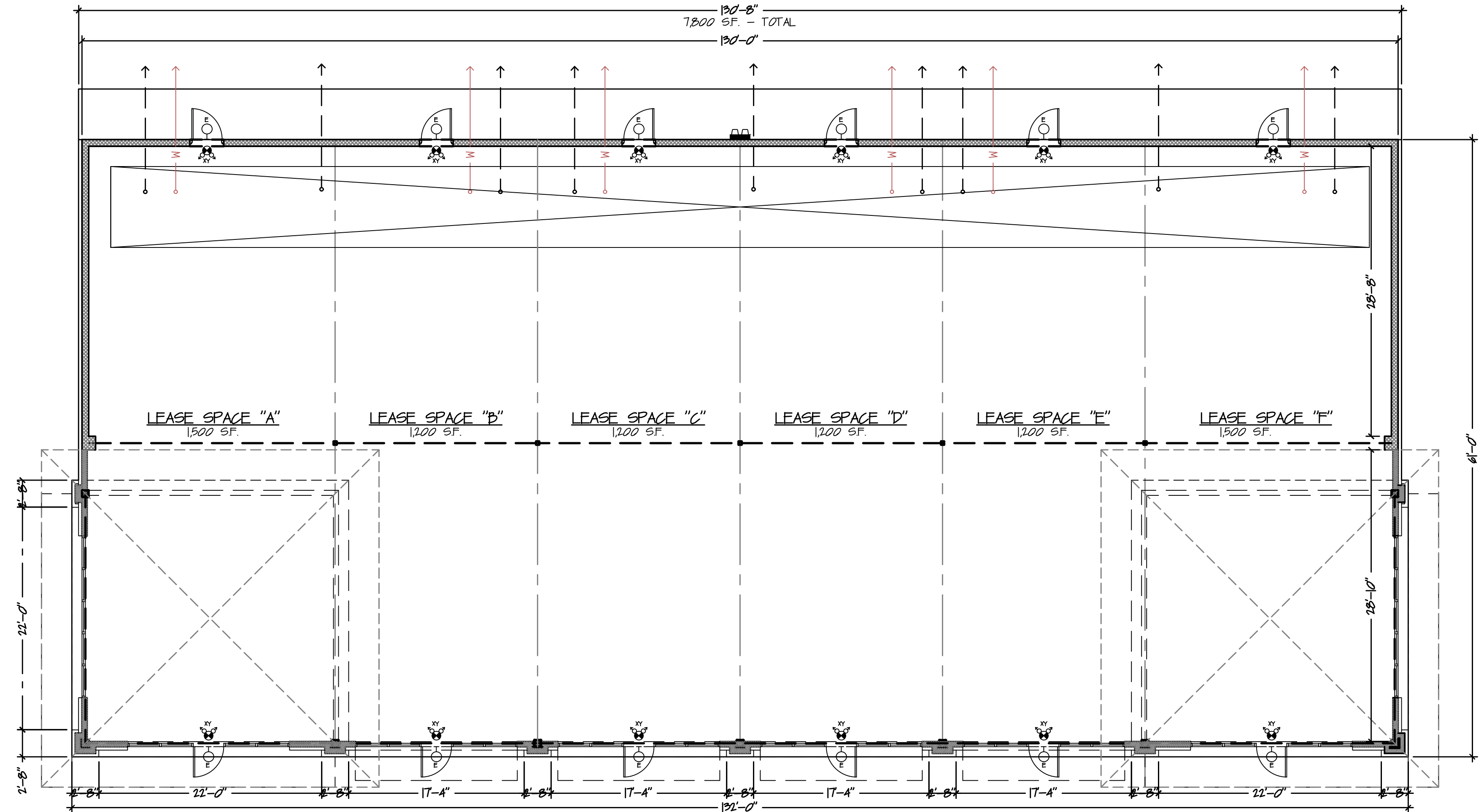
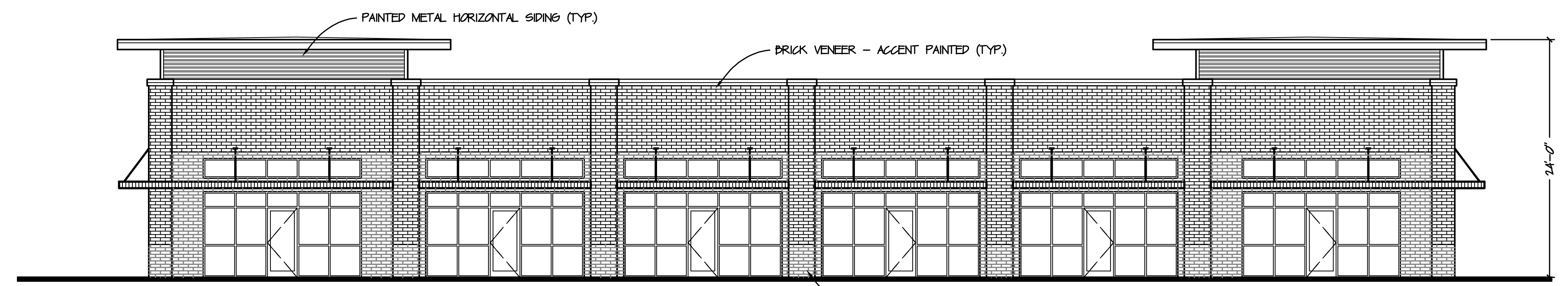
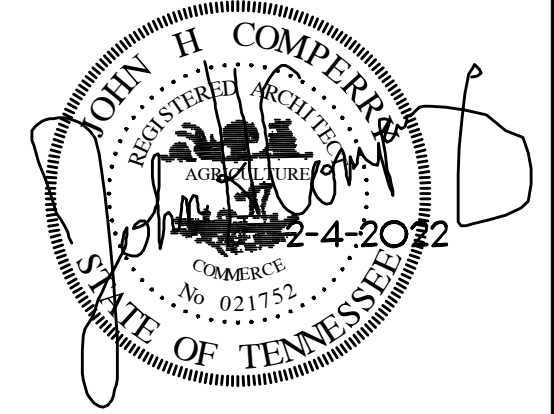


# CODE SUMMARY DATA

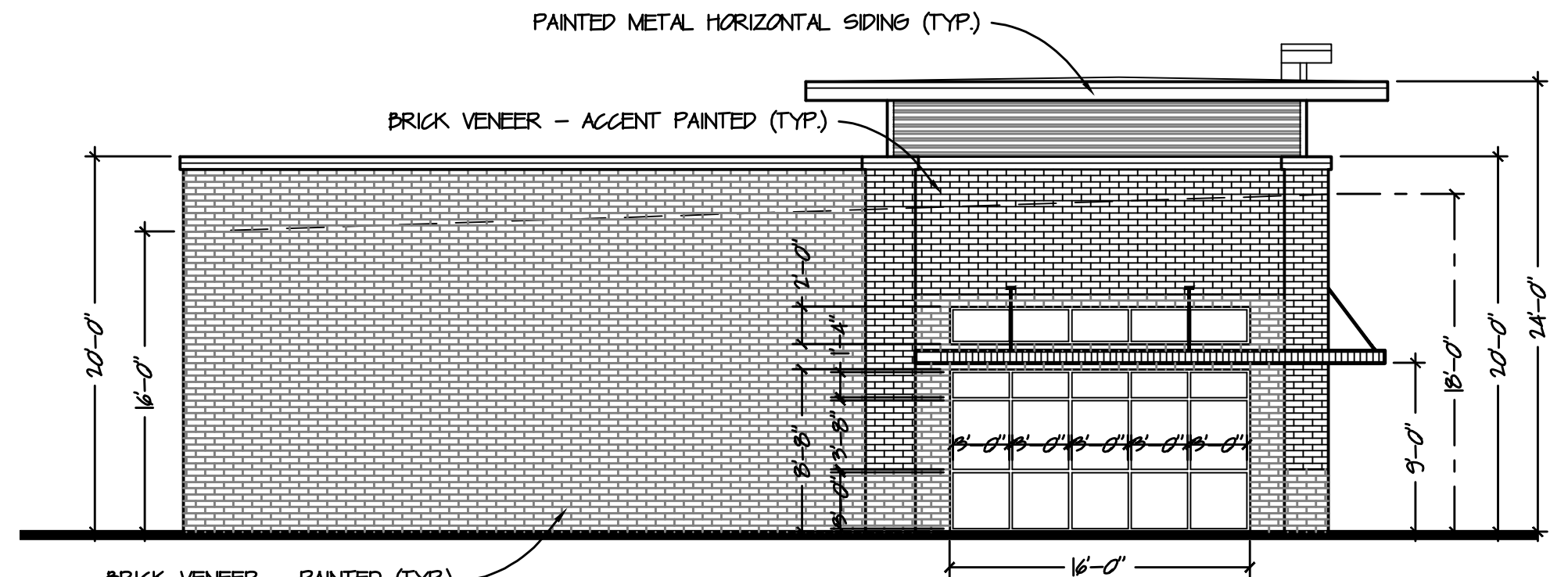
- BUILDING CODE(S):** 2018 ICC - IBC, IFGC, IMC, IPC, 2009 IECC, & 2017 NEC
- ACCESSIBILITY CODE:** 2009 ICC/ANSI A117.1 - ACCESSIBLE & USEABLE BUILDINGS
- USE GROUP:** B "BUSINESS" (SECTION 304)  
M "MERCANTILE" (SECTION 309)
- CONSTRUCTION TYPE:** V-B (TABLE 601)
- SPRINKLER SYSTEM:** n/a
- TWO HOUR RATED FIRE BARRIER:** UL# U905
- ALLOWABLE AREA:** 15,750 SF - 2 STORY (W/ 75% FRONTAGE INCREASE)
- TOTAL GROSS AREA:** 13,775 SF - 1 STORY
- MAX. ALLOWABLE HEIGHT:** 40'-0"
- ACTUAL BUILDING HEIGHT:** 27'-8"
- EXIT ACCESS TRAVEL DISTANCE:** 200 FEET, (TABLE 1016.1)
- ACTUAL MAX. TRAVEL DISTANCE:** <35 FEET



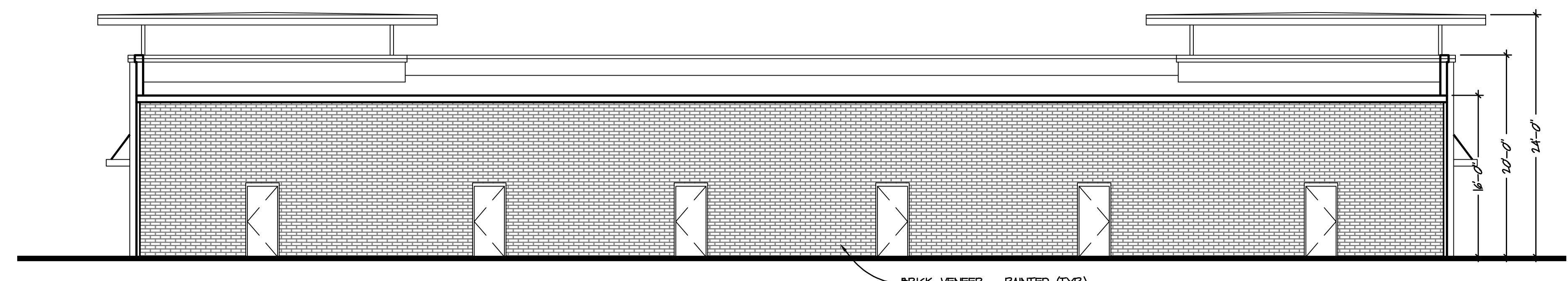
**A FLOOR PLAN**  
SCALE: 1/8" = 1'-0"



**B FRONT ELEVATION**  
SCALE: 1/8" = 1'-0"



**C TYP. SIDE ELEVATION**  
SCALE: 1/8" = 1'-0"



**D REAR ELEVATION**  
SCALE: 1/8" = 1'-0"

REVISIONS	BY

DRAWN	JHC
CHECKED	
APPROVED	
JOB NO.	0722_Ft Campbell Blvd Retail
DATE	2-4-2022
SHEET	A-101
OF	
SHEETS	