

2550 GOLF ROAD • ROLLING MEADOWS • ILLINOIS



A GOLDEN OPPORTUNITY
GOLF TOWER



A 270,000 SF OFFICE CAMPUS
WITH LIMITLESS POTENTIAL
AND CUSTOMIZATION POSSIBILITIES

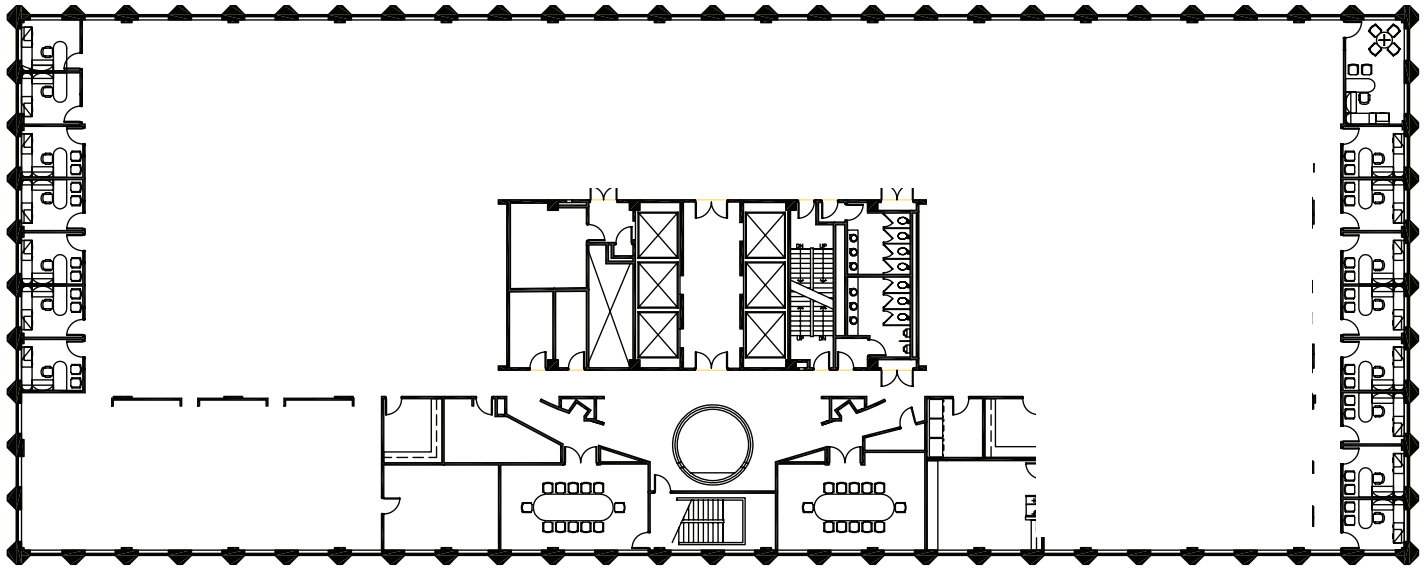
NAI Hiffman
Commercial Real Estate Services, Worldwide

DO WHAT YOU LIKE

- ENTIRE BUILDING AVAILABLE: UP TO 270,000 SF
- ULTIMATE FLEXIBILITY - OWNERSHIP WILL BUILD AMENITIES TO SUIT
- LARGE EFFICIENT FLOOR PLATES WITH BEAUTIFUL FOREST PRESERVE VIEWS
- EASILY ACCESSIBLE FROM I-90 & I-290
- PARKING RATIO: 5/1000 SF (EXPANDABLE)
- INCREDIBLE TOLLWAY VISIBILITY AND SIGNAGE OPPORTUNITIES
- ABUNDANT AREA AMENITIES INCLUDING BIKE PATHS, SHOPING, HOTELS, RESTAURANT, AND PUBLIC TRANSPORTATION

TYPICAL FLOORPLATE

10TH FLOOR 27,047 SF

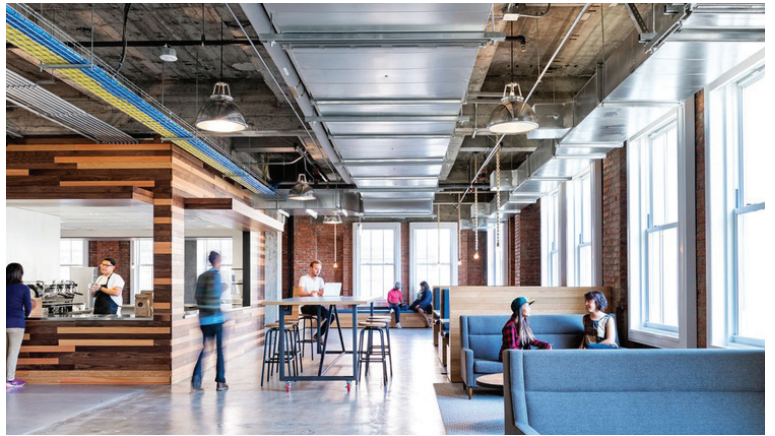


DON'T SETTLE FOR LESS



LIMITLESS POTENTIAL, ENDLESS OPPORTUNITY

A RARE BLANK CANVAS OFFICE CAMPUS OPPORTUNITY READY TO IMPLEMENT YOUR VISION.

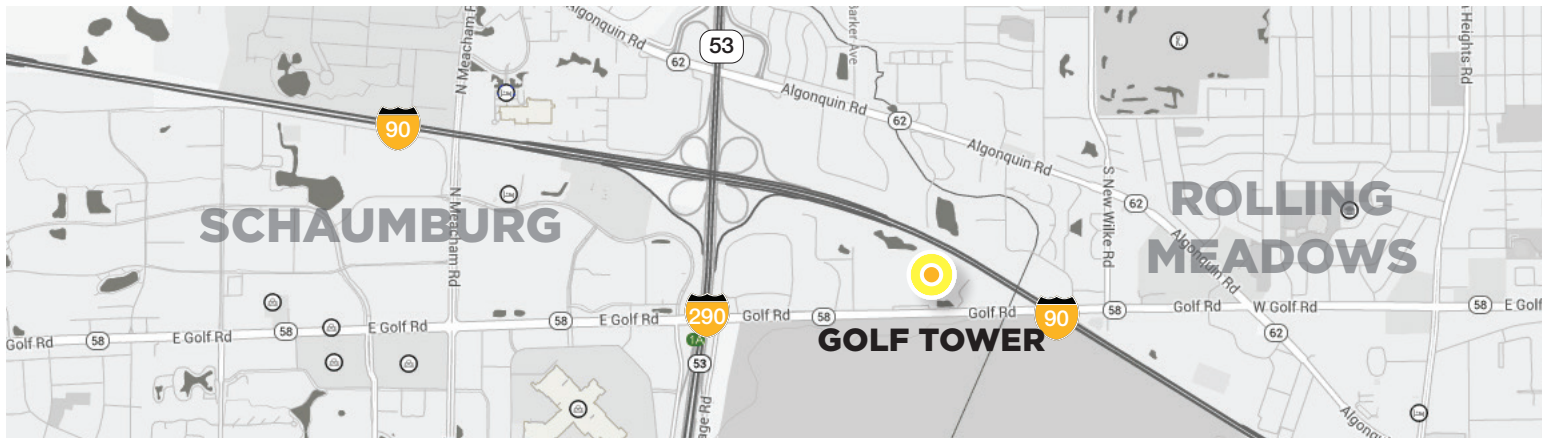


TENANT LOUNGE, CONFERENCE CENTER, DELI, FITNESS CENTER, OUTDOOR PATIO, ROOFTOP DECK...

DEFINE YOUR SPACE



*SAMPLE BUILDOUTS FOR ILLUSTRATIVE PURPOSES



GOLF TOWER

2550 GOLF ROAD
ROLLING MEADOWS ILLINOIS

FOR LEASING INFORMATION PLEASE CONTACT

JACK REARDON

630 693 0647

JREARDON@HIFFMAN.COM

JASON WURTZ

630 693 0692

JWURTZ@HIFFMAN.COM