

375 SOUTH MAIN STREET

WOODSTOWN, NJ

±12.6 ACRES AVAILABLE FOR SALE



property highlights.

- Large, flat parcel with 2 road frontages
- Public water to site, public sewer nearby
- IR (Inclusionary Residential) zoning
- Excellent multi-family residential development opportunity



stats.

2017 DEMOGRAPHICS*	3 MILES	5 MILES	7 MILES
EST. POPULATION	6,450	11,036	22,440
EST. HOUSEHOLDS	2,430	3,978	7,853
EST. AVG. HH INCOME	\$90,666	\$101,705	\$106,675

*ESRI 2017



METRO[®]
COMMERCIAL
REAL ESTATE, INC.

MetroCommercial.com | PHILADELPHIA, PA | PLYMOUTH MEETING, PA | MOUNT LAUREL, NJ | NAPLES, FL | MIAMI, FL

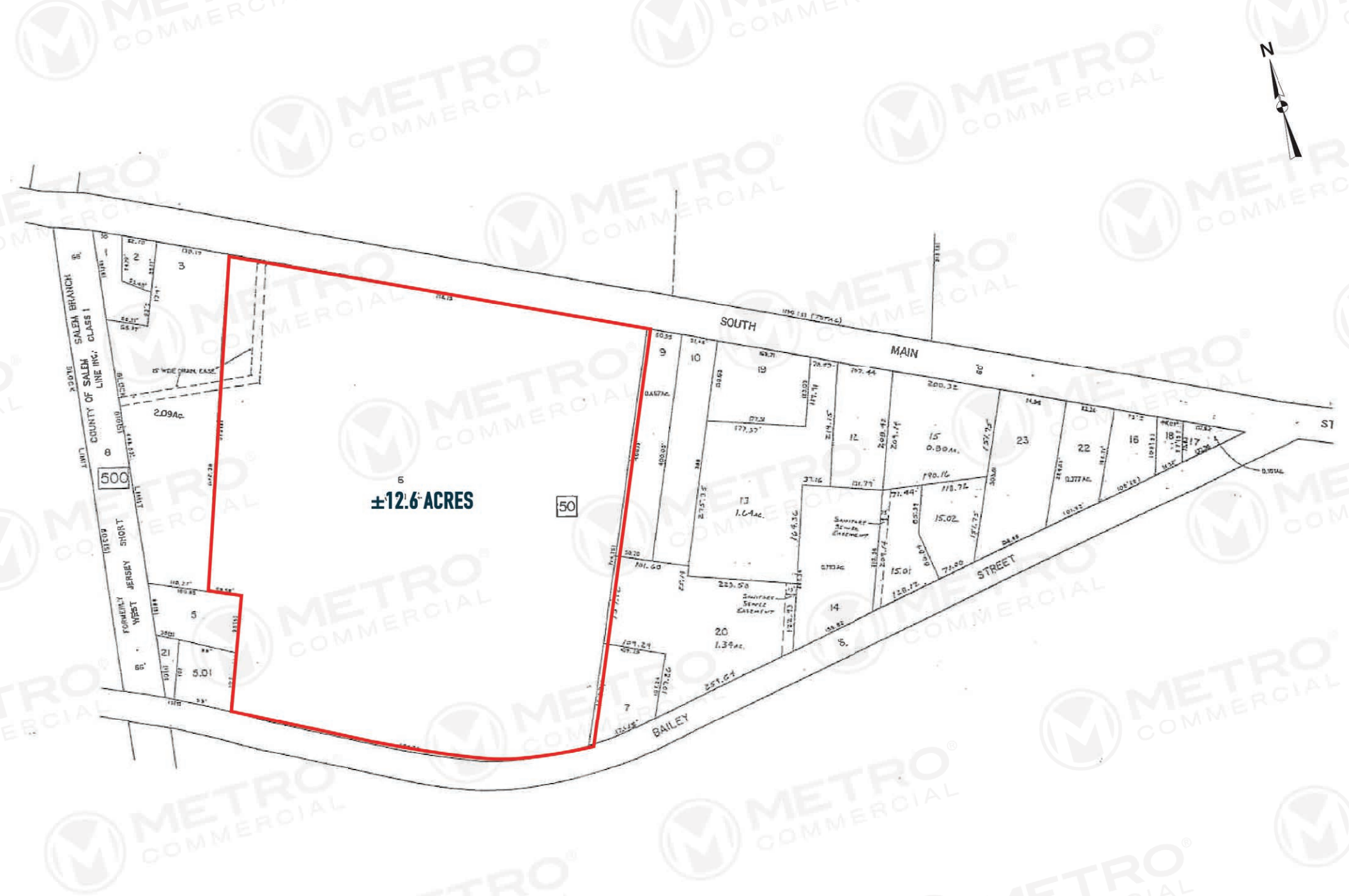
get in touch.

BRENT BARBEHENN

office 856.866.1900
direct 856.222.3036
bbarbehenn@metrocommercial.com

MARK GERLACH

office 856.866.1900
direct 856.222.3032
mgerlach@metrocommercial.com



The information and images contained herein are from sources deemed reliable. However, Metro Commercial Real Estate, Inc. makes no representation whatsoever as to their accuracy or authenticity. Images shown may be modified for illustrative purposes. Images may be out-of-date and not current. 5.10.18

**375 SOUTH MAIN STREET
WOODSTOWN, NJ**





±12.6 ACRES

The information and images contained herein are from sources deemed reliable. However, Metro Commercial Real Estate, Inc. makes no representation whatsoever as to their accuracy or authenticity. Images shown may be modified for illustrative purposes. Images may be out-of-date and not current. 5.10.18

**375 SOUTH MAIN STREET
WOODSTOWN, NJ**





The information and images contained herein are from sources deemed reliable. However, Metro Commercial Real Estate, Inc. makes no representation whatsoever as to their accuracy or authenticity. Images shown may be modified for illustrative purposes. Images may be out-of-date and not current. 5.10.18

**375 SOUTH MAIN STREET
WOODSTOWN, NJ**

