

14441 ROTUNDA DRIVE
DEARBORN, MICHIGAN

INDUSTRIAL FOR SALE OR LEASE
48,362 Square Feet Available



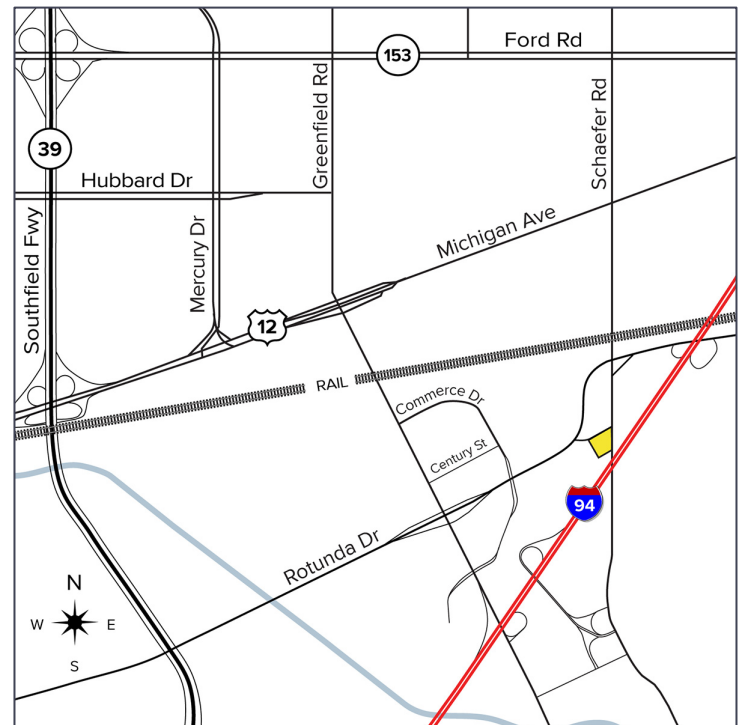
**SIGNATURE
ASSOCIATES**
KNOW SIGNATURE | KNOW RESULTS

FORD DIGITAL MARKETING



PROPERTY FEATURES

- 48,362 square feet available
- 15'-16' clear ceiling height
- (2) 12 x 14 grade level doors
- Zoned IB, Medium Industrial
- Located on 3.0 plus acres
- 200+ Parking
- Located near I-94, Ford Motor Company World Headquarters, and Ford Rouge Plant
- High efficiency fire suppression system
- Approximately 25 private offices, 2 large conference rooms and large cafeteria
- Price Reduced
- Lease rate: \$5.00/sq. ft. NNN
- Sale Price: \$2,659,910 (\$55.00/sq. ft.)



For more information, please contact:

JACK TOWNSEND
(248) 948 0115
jtownsend@signatureassociates.com

SIGNATURE ASSOCIATES
One Towne Square, Suite 1200
Southfield, MI 48076
www.signatureassociates.com

14441 Rotunda Drive – Dearborn, Michigan

Industrial For Sale or Lease

48,760
Square Feet
AVAILABLE

Additional Photos



For more information, please contact:

JACK TOWNSEND
(248) 948 0115
jtownsend@signatureassociates.com

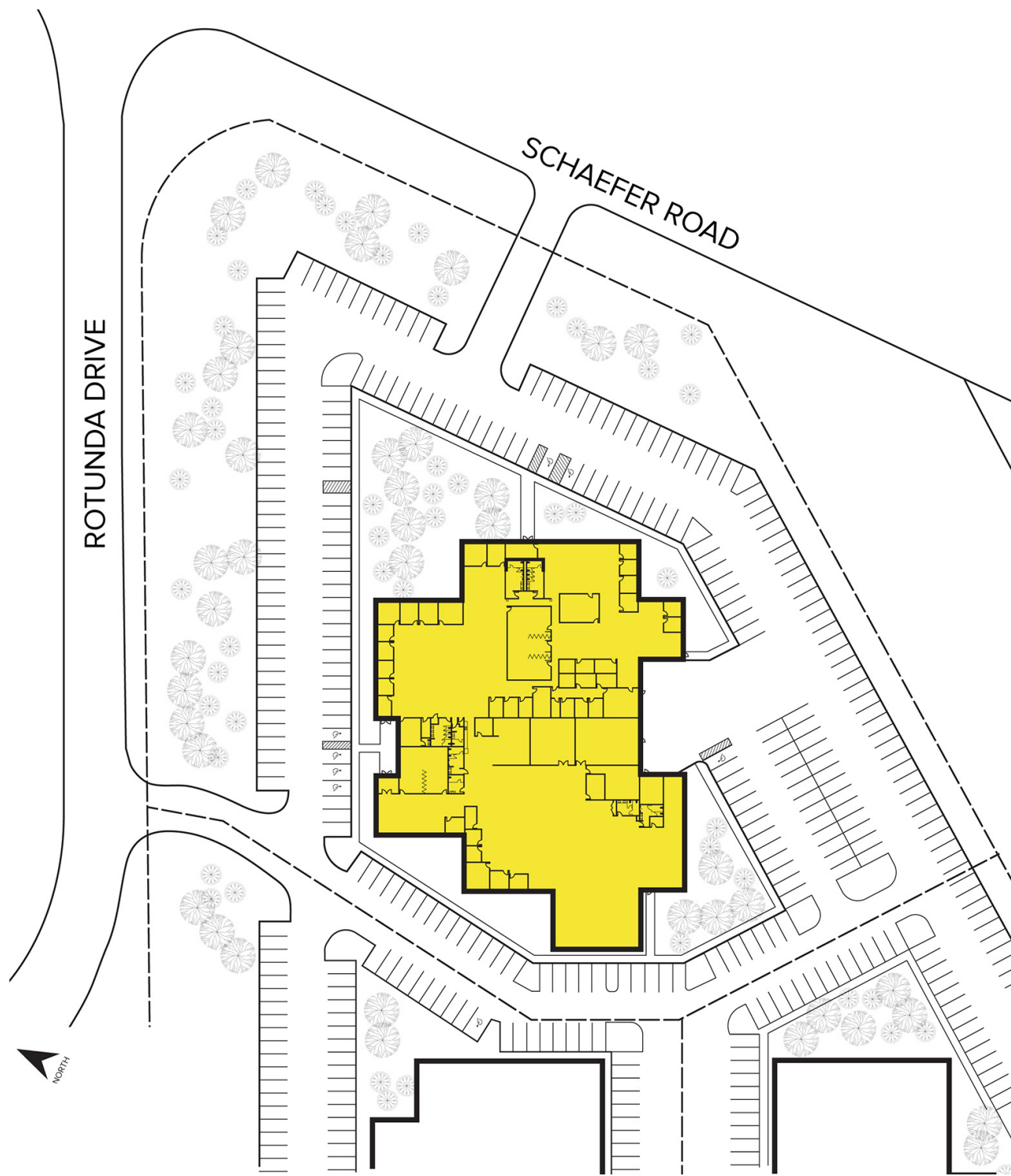
SIGNATURE ASSOCIATES
One Towne Square, Suite 1200
Southfield, MI 48076
www.signatureassociates.com

14441 Rotunda Drive – Dearborn, Michigan

Industrial For Sale or Lease

48,760
Square Feet
AVAILABLE

Site Plan



For more information, please contact:

JACK TOWNSEND
(248) 948 0115
jtownsend@signatureassociates.com

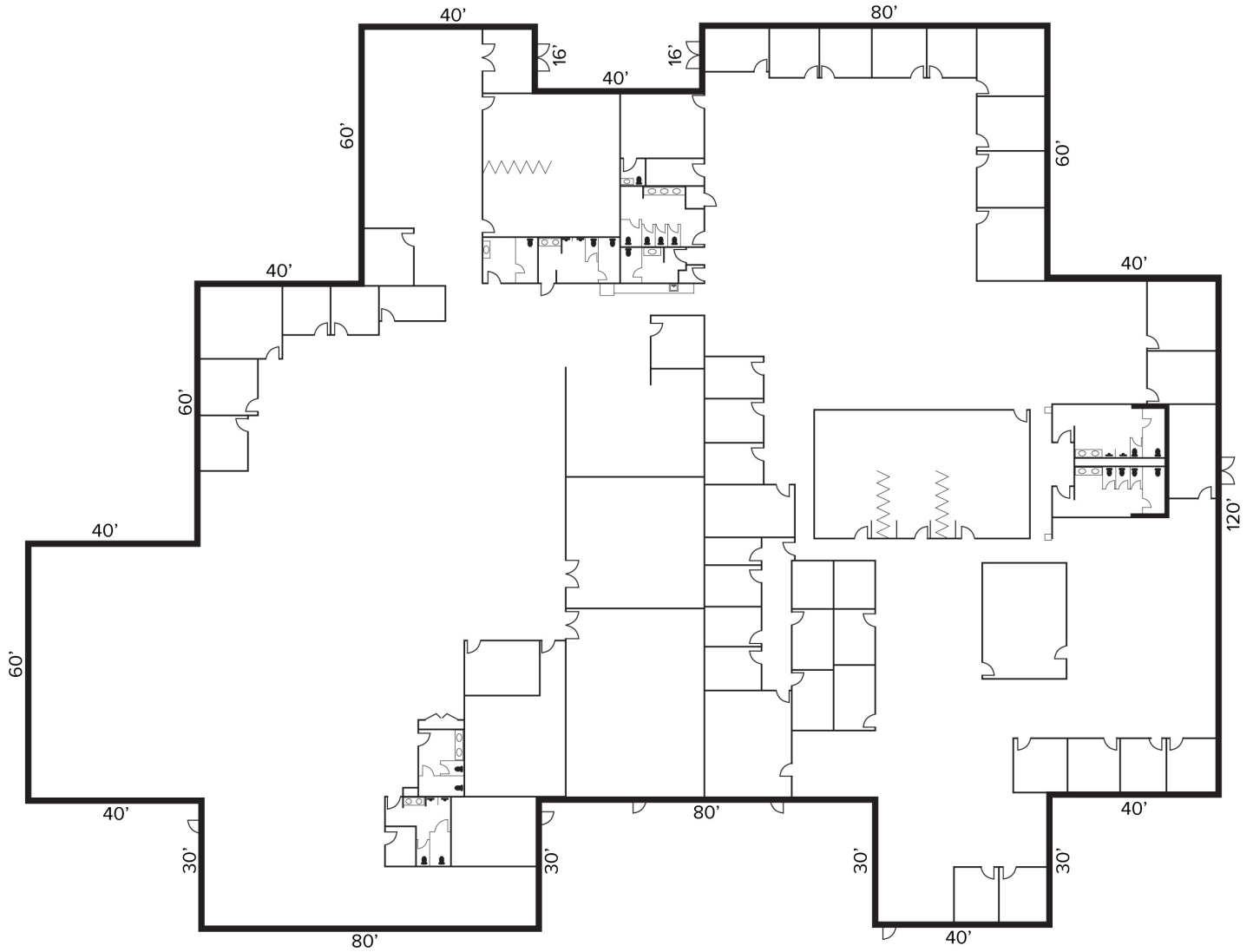
SIGNATURE ASSOCIATES
One Towne Square, Suite 1200
Southfield, MI 48076
www.signatureassociates.com

14441 Rotunda Drive – Dearborn, Michigan

Industrial For Sale or Lease

48,760
Square Feet
AVAILABLE

Floor Plan



For more information, please contact:

JACK TOWNSEND
(248) 948 0115
jtownsend@signatureassociates.com

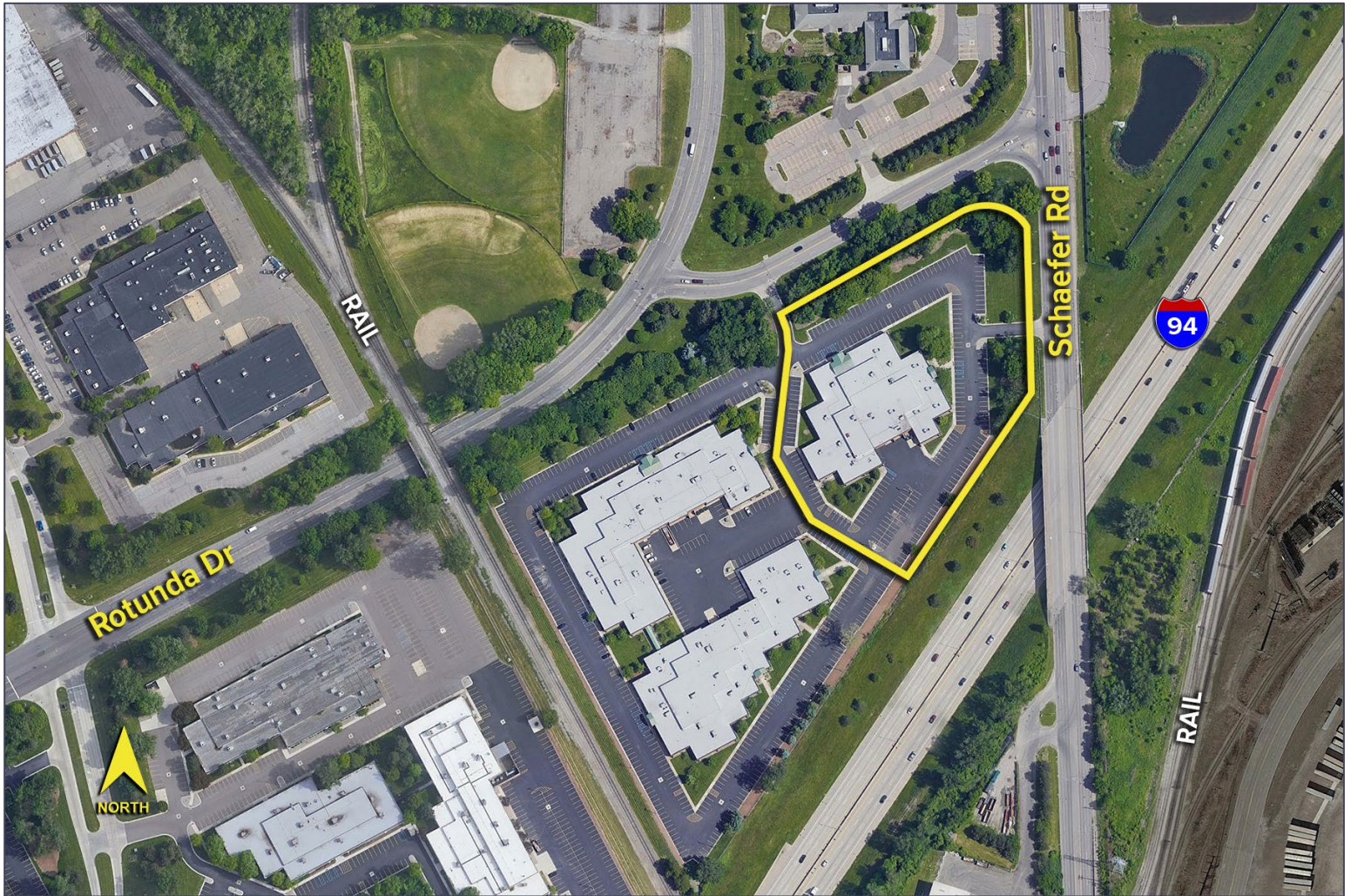
SIGNATURE ASSOCIATES
One Towne Square, Suite 1200
Southfield, MI 48076
www.signatureassociates.com

14441 Rotunda Drive – Dearborn, Michigan

Industrial For Sale or Lease

48,760
Square Feet
AVAILABLE

Aerial



For more information, please contact:

JACK TOWNSEND
(248) 948 0115
jtownsend@signatureassociates.com

SIGNATURE ASSOCIATES
One Towne Square, Suite 1200
Southfield, MI 48076
www.signatureassociates.com