

## HISTORIC MANSIONS ON WALNUT AVENUE, VALLEJO, CALIFORNIA



### CURRENTLY AVAILABLE

- Quarters C: 1085 Walnut Ave.**
- Quarters E: 1155 Walnut Ave.**
- Quarters J: 1061 Walnut Ave.**
- Quarters L: 1035 Walnut Ave.**
- Quarters M: 1025 Walnut Ave.**
- Quarters N: 1015 Walnut Ave.**
- Quarters O: 1005 Walnut Ave.**

- Approximately 7,358 ± SF, including attic and basement
- Six + private offices
- Two conference rooms
- Full kitchen facilities
- Three - five restrooms
- Extensive grounds / Historic neighborhood
- [U.S. Small Business Administration HUB Zone](#)

### FOR MORE INFORMATION

Office: 707.562.3553

Email: [leasing@discovermareisland.com](mailto:leasing@discovermareisland.com)

[HOME](#)

[FLOOR PLANS AND PHOTOS](#)

[Interior photos](#)

[Typical Floorplate](#)

**KENNEDY WILSON**

*thriving on opportunity®*

## HISTORIC MANSIONS ON WALNUT AVENUE, VALLEJO, CALIFORNIA



### OFFICE FOR LEASE

- Historic building
- Large landscaped yard
- Covered porch
- Hardwood floors

### FOR MORE INFORMATION

Office: 707.562.3553

Email:  
[leasing@discovermareisland.com](mailto:leasing@discovermareisland.com)

[HOME](#)

FLOOR PLANS AND PHOTOS

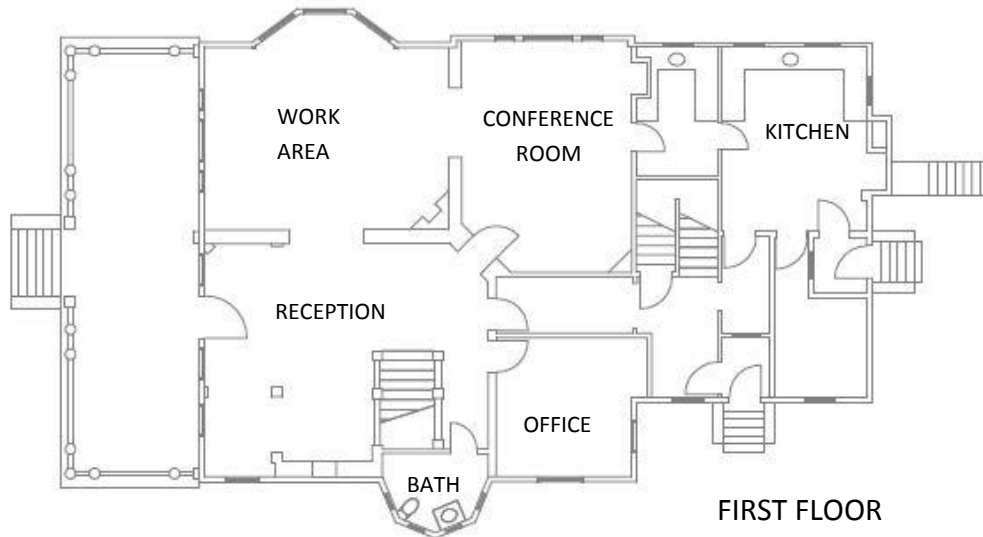
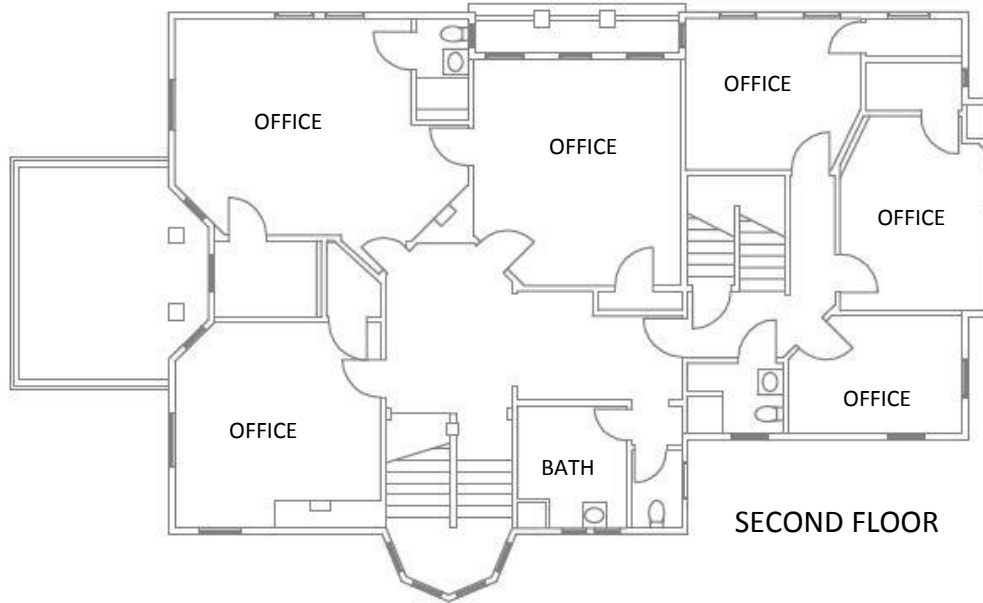
[Interior photos](#)

[Typical Floorplate](#)

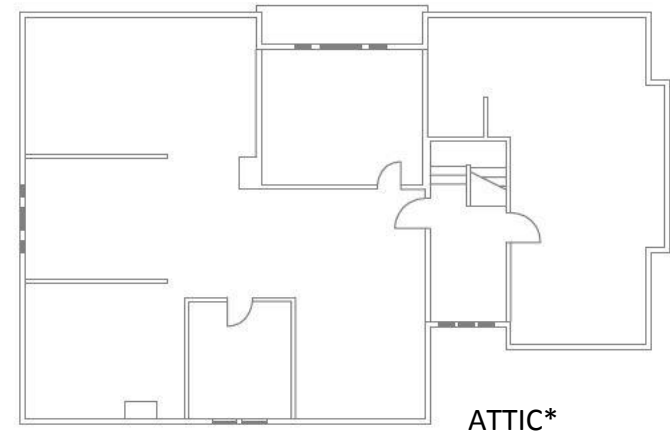
**KENNEDY WILSON**

*thriving on opportunity®*

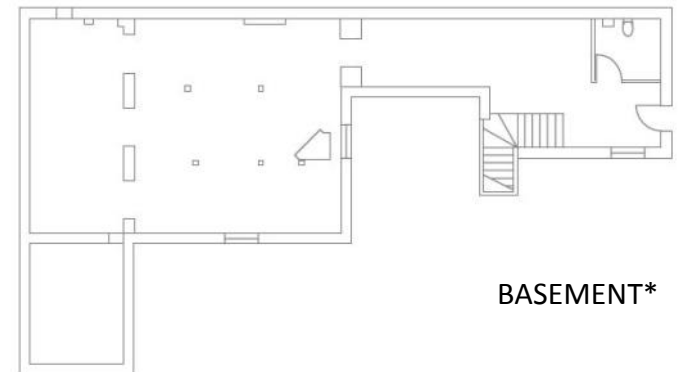
## HISTORIC MANSIONS ON WALNUT AVENUE, VALLEJO, CALIFORNIA



TYPICAL FLOORPLAN



\* Floor plans will vary



\* Floor plans will vary