

4725 WOODVILLE ROAD
LAKE TWP, OH 43619

RETAIL FOR SALE OR LEASE
13,614 Square Feet Available



**SIGNATURE
ASSOCIATES**
KNOW SIGNATURE | KNOW RESULTS

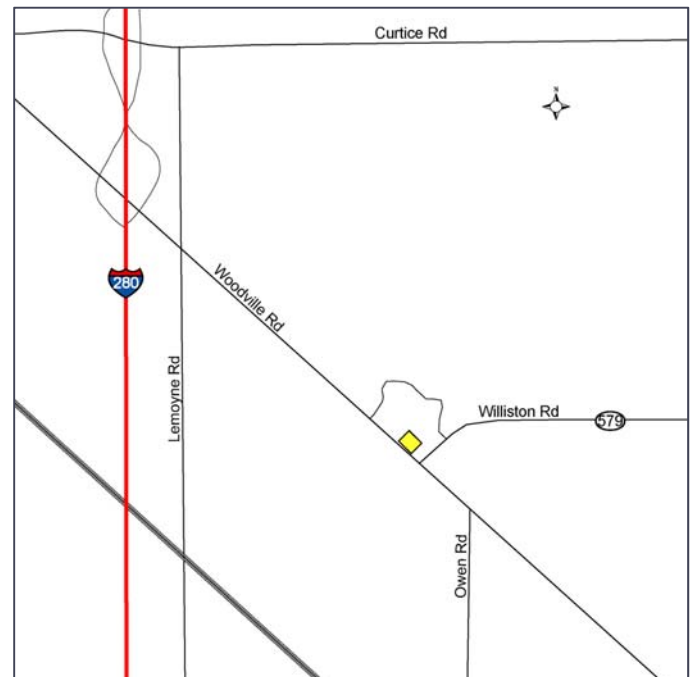
FULL-SERVICE COMMERCIAL REAL ESTATE

NORTHWOOD PLAZA



GENERAL INFORMATION

Sale Price:	\$425,000
Lease Rate:	\$8.00 per square foot NNN
Building Size:	13,614 square feet (2 buildings)
Space Available:	Suite D – 1,000 sf Suite E – 4,000 sf (former bar) Suite I – 1,200 sf (former tattoo parlor)
Number of Stories:	One
Year Constructed:	1979
Condition:	Good
Closest Cross Street:	Williston Road (SR-579)
County:	Wood
Zoning:	B-1 – Neighborhood Business District
Parking:	75 spaces in common
Curb Cuts:	Two
Street:	4 lane with center turn



For more information, please contact:

CRAIG HERSCHEL
(419) 249 6325
cherschel@signatureassociates.com

JOE FRANCIS
(419) 249 6320
jfrancis@signatureassociates.com

SIGNATURE ASSOCIATES
Four SeaGate, Suite 608
Toledo, Ohio 43604
www.signatureassociates.com

4725 Woodville Road, Lake Twp, OH 43619

Retail For Sale or Lease

13,614
Square Feet
AVAILABLE

BUILDING SPECIFICATIONS

Exterior Walls:	Brick and concrete block
Structural System:	Steel beam
Roof:	Standing seam metal
Floors:	Concrete
Floor Coverings:	Ceramic & vinyl tile
Ceiling Height:	9'
Basement:	No
Heating:	Gas & electric
Air Conditioning:	Central
Power:	200 amp
Restrooms:	1 or 2 per unit
Sprinklers	No
Delivery Area:	Parking lot and/or rear of building
Signage:	Pylon & fascia

BUILDING INFORMATION

Current Tenant:	None – vacant
Occupancy Date:	Upon closing or lease execution
Sign on Property:	Yes
Key Available:	Shown by appointment

Comments:

- Rent roll and P&Ls on file.
- Located at the Woodville Road (SR-51) and Williston Road (SR-579) intersection.
- Owner will split space under the right terms and conditions.
- Numerous long term tenants.
- Sale includes a 0.63-acre parcel.
- Property presents a nice user/investment opportunity.

LEASE DETAILS

Term:	3 to 5 years
Security Deposit:	One month's rent
Options:	Negotiable
Improvements Allowance:	None
Tenant Responsible For:	Utilities, interior maintenance and CAM

2015 REAL ESTATE TAXES

Parcel Numbers:	H28-712-030202005000 H28-712-030202003000
Total Taxes:	\$10,618.42

DEMOGRAPHICS

	POPULATION	MED. HH INCOME
1 MILE	2,837	\$69,732
3 MILE	21,468	\$58,767
5 MILE	69,215	\$50,029

TRAFFIC COUNTS (TWO-WAY)

WOODVILLE ROAD	16,330 cars per day
LOCATED AT TRAFFIC LIGHT	
1 MILE TO I-280	

For more information, please contact:

CRAIG HERSCHEL
(419) 249 6325
cherschel@signatureassociates.com

JOE FRANCIS
(419) 249 6320
jfrancis@signatureassociates.com

SIGNATURE ASSOCIATES
Four SeaGate, Suite 608
Toledo, Ohio 43604
www.signatureassociates.com

4725 Woodville Road, Lake Twp, OH 43619

Retail For Sale or Lease

13,614
Square Feet
AVAILABLE



For more information, please contact:

CRAIG HERSCHEL
(419) 249 6325
cherschel@signatureassociates.com

JOE FRANCIS
(419) 249 6320
jfrancis@signatureassociates.com

SIGNATURE ASSOCIATES
Four SeaGate, Suite 608
Toledo, Ohio 43604
www.signatureassociates.com

Information is subject to verification and no liability for errors or omissions is assumed. Price is subject to change and listing withdrawal.

4725 Woodville Road, Lake Twp, OH 43619

Retail For Sale or Lease

13,614
Square Feet
AVAILABLE



For more information, please contact:

CRAIG HERSCHEL
(419) 249 6325
cherschel@signatureassociates.com

JOE FRANCIS
(419) 249 6320
jfrancis@signatureassociates.com

SIGNATURE ASSOCIATES
Four SeaGate, Suite 608
Toledo, Ohio 43604
www.signatureassociates.com