

# CLOCK TOWER PLACE

1410 FOREST DRIVE, ANNAPOLIS, MD 21403

CLOCK TOWER  
PLACE

1410  
FOREST DRIVE

SIGNAGE AVAILABLE

CLEANERS

**ABRAMS**  
DEVELOPMENT GROUP



# Ongoing Capital Improvements!

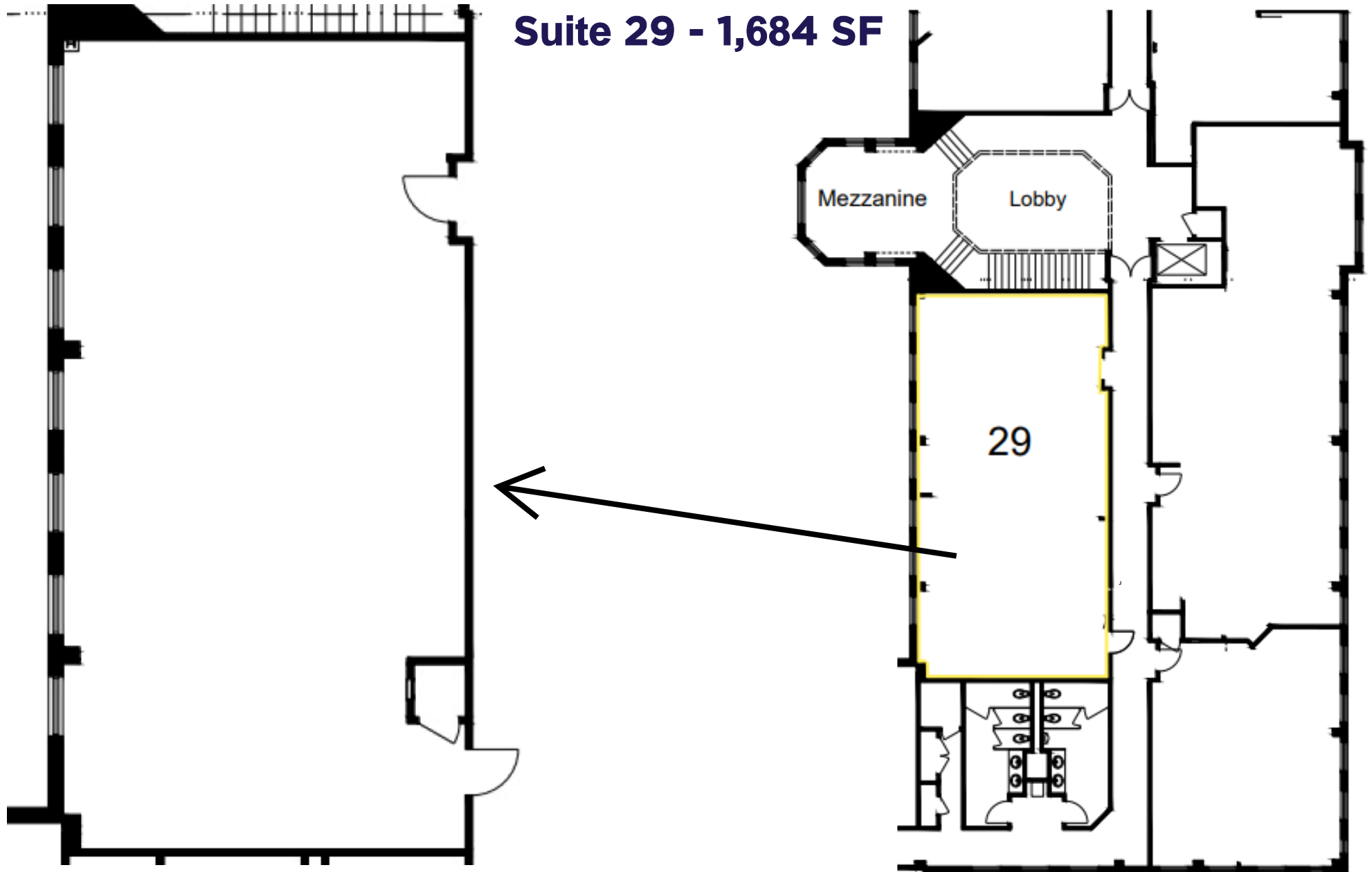


Common area recently renovated with all new carpeting, painting, art, and furniture. Awning for the building recently upgraded.



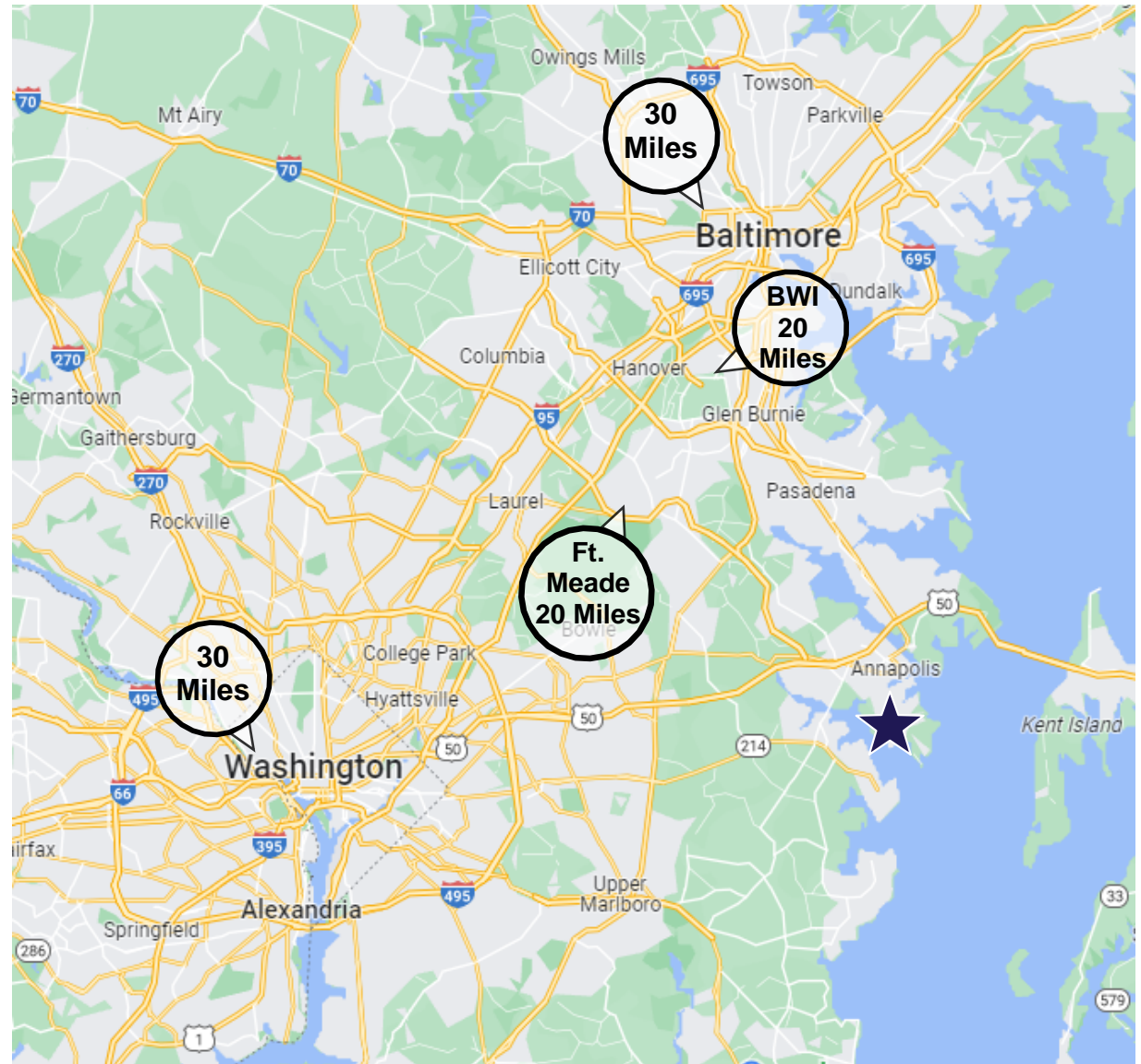
# FLOOR PLANS

**Suite 29 - 1,684 SF**



# BUILDING DETAILS

- **Neighborhood center with upscale retail on first floor**
- **Convenient location with access to I-97, US-50, and MD-2**
- **Turnkey build-out available**
- **Exterior building signage available**
- **Recently renovated common areas with more upgrades and investment planned**
- **Plenty of amenities within 10 minute driving radius**



# CONTACT INFORMATION

**Contact Matt Abrams for more information**

**410-312-3200**

**[Matt@AbramsDevelopment.com](mailto:Matt@AbramsDevelopment.com)**



**8601 Robert Fulton Drive, Suite 100, Columbia, MD 21046**