

PROGRAM

- (200) 30X60 WORKSTATIONS
- (9) OFFICES
- (1) 20-PERSON CONFERENCE ROOM
- (3) 10-PERSON CONFERENCE ROOMS
- (1) 6-PERSON CONFERENCE ROOM
- (6) 4-PERSON CONFERENCE ROOMS
- (3) 2-PERSON Huddle ROOMS
- (12) PHONE BOOTHS
- (2) UNISEX SHOWER/TOILET ROOMS
- MEN'S/WOMEN'S RESTROOMS
- RECEPTION AREA
- COLLABORATION SPACE
- INNOVATION/TECH LAB
- CAFE/LOUNGE
- GAME ROOM
- IT CLOSET
- WELLNESS ROOM
- STORAGE CLOSETS

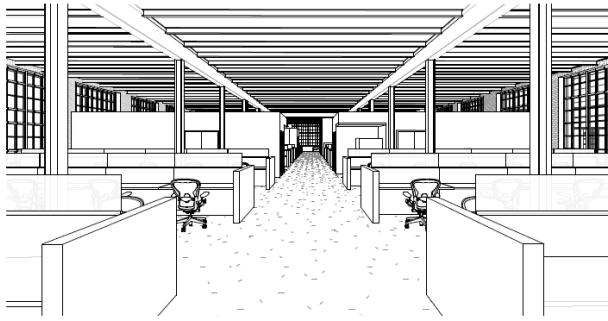
TEST FIT NOTE

THIS IS A PRELIMINARY STUDY AND IS SUBJECT TO REVIEW AND APPROVAL OF THE LOCAL AUTHORITIES HAVING JURISDICTION.

FLOOR PLAN SYMBOLS

- EXISTING DOOR TO REMAIN
- EXISTING WALL TO REMAIN
- NEW DOOR
- NEW WALL CONSTRUCTION

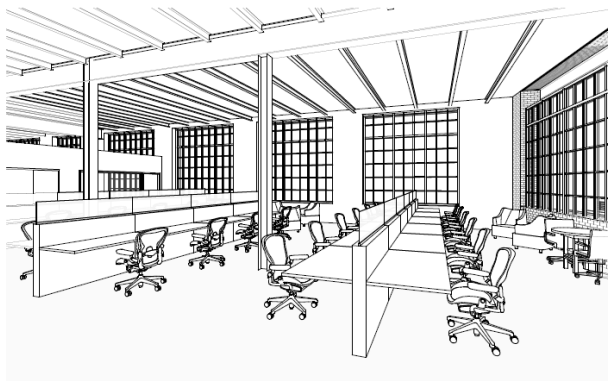
TEST FIT PLAN
1/8" = 1'-0"
PROJECT NORTH



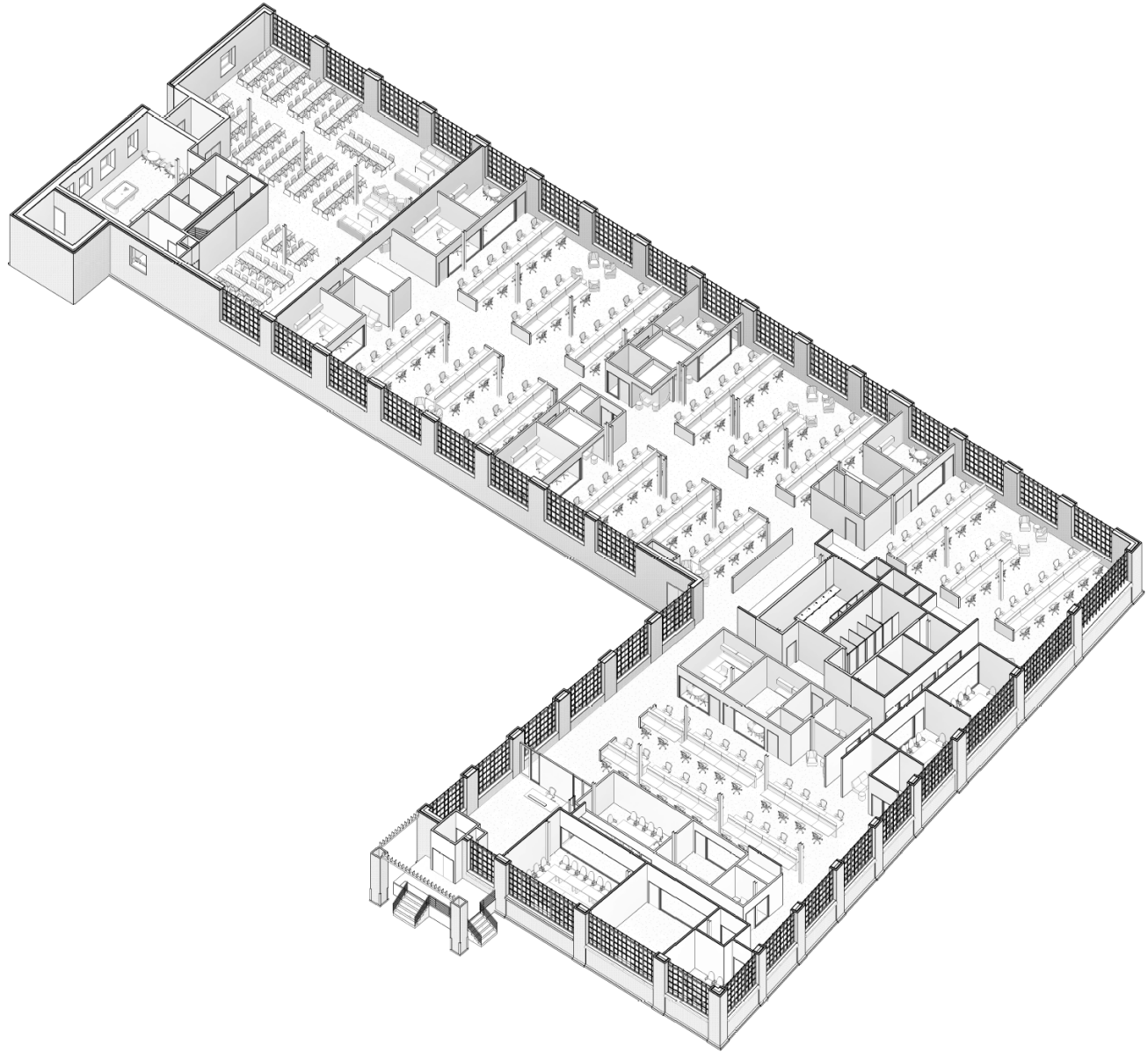
2 INTERIOR PERSPECTIVE - OPEN OFFICE



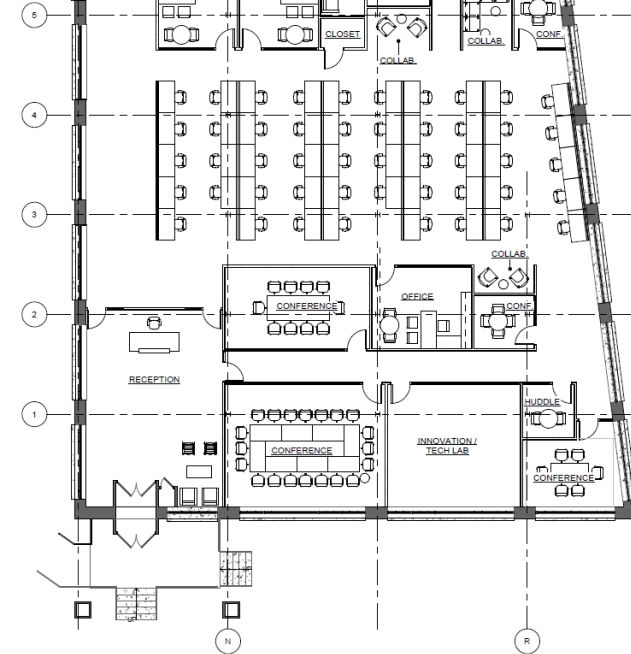
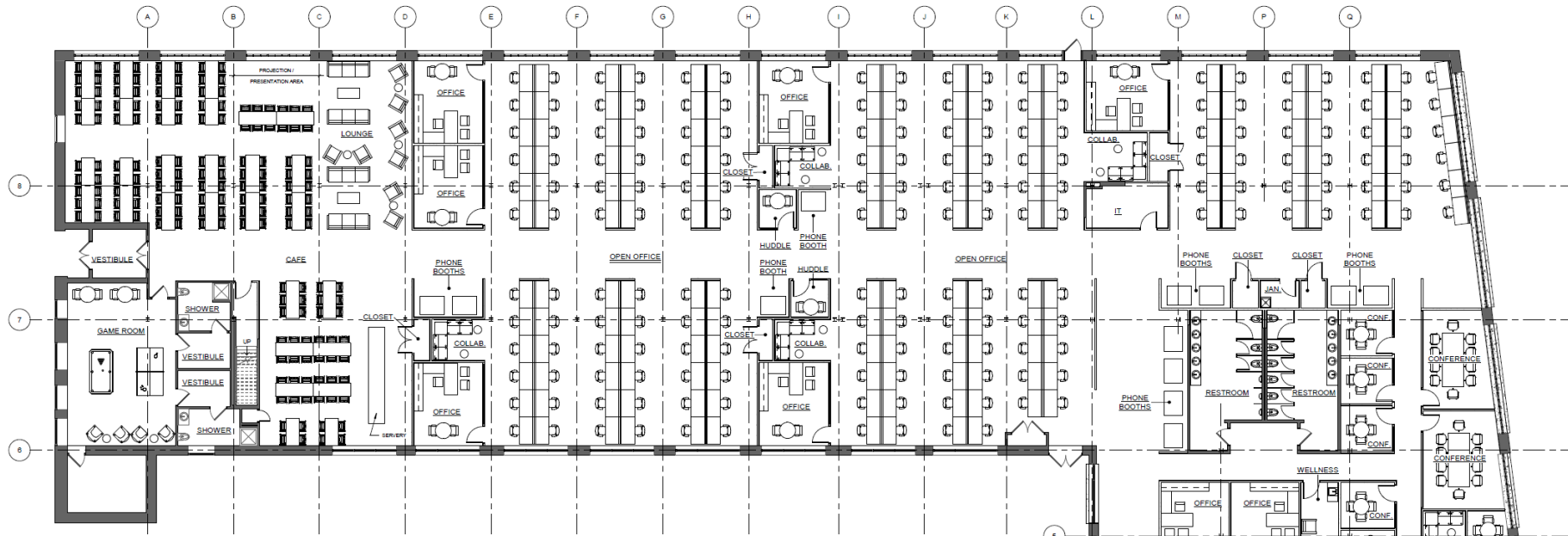
3 INTERIOR PERSPECTIVE - OFFICE AND COLLABORATION BAR



4 INTERIOR PERSPECTIVE - OPEN OFFICE



1 AXONOMETRIC VIEW



PROGRAM - MAXIMUM SEATS	
(232)	30X60 WORKSTATIONS
(8)	OFFICES
(1)	20-PERSON CONFERENCE ROOM
(3)	10-PERSON CONFERENCE ROOMS
(1)	6-PERSON CONFERENCE ROOM
(1)	4-PERSON CONFERENCE ROOMS
(6)	2-PERSON HUDDLE ROOMS
(12)	PHONE BOOTHS
(2)	UNISEX SHOWER/TOILET ROOMS
	MEN'S/WOMEN'S RESTROOMS
	RECEPTION AREA
	COLLABORATION SPACE
	INNOVATION/TECH LAB
	CAFELOUNGE
	GAME ROOM
	IT CLOSET
	WELLNESS ROOM
	STORAGE CLOSETS

TEST FIT NOTE	
THIS IS A PRELIMINARY STUDY AND IS SUBJECT TO REVIEW AND APPROVAL OF THE LOCAL AUTHORITIES HAVING JURISDICTION.	

FLOOR PLAN SYMBOLS	
	EXISTING DOOR TO REMAIN
	EXISTING WALL TO REMAIN
	NEW DOOR
	NEW WALL CONSTRUCTION

1 TEST-FIT PLAN - MAXIMUM WORKSTATIONS
 PROJECT NORTH
 1/8" = 1'-0"