

**RETAIL**  
FOR LEASE



FOR **LEASE**

300 S. Broadway-Retail

Saint Louis, MO 63102

**INTELICA**   
COMMERCIAL REAL ESTATE



## GROUND FLOOR RETAIL ACROSS FROM BUSCH STADIUM

### Property Overview

300 S. Broadway is the future home of 78 luxury apartments, located in the center of downtown St. Louis, the city's most exciting neighborhood to live, work and play.

Directly adjacent to Busch Stadium, home of the St. Louis Cardinals, as well as Ballpark Village, a 700,000 SF mixed-use development project that attracts over 6 million visitors each year.

Become part of the downtown revolution with a premiere retail space inside the area's newest residential development.

**590 SF for lease**  
**\$28.00 PSF (NNN)**

Dan Dokovic  
Principal  
314.270.5992  
ddokovic@intcre.com

Drew Clary  
VP | Brokerage  
314.445.8551  
dclary@intcre.com

### Property Features

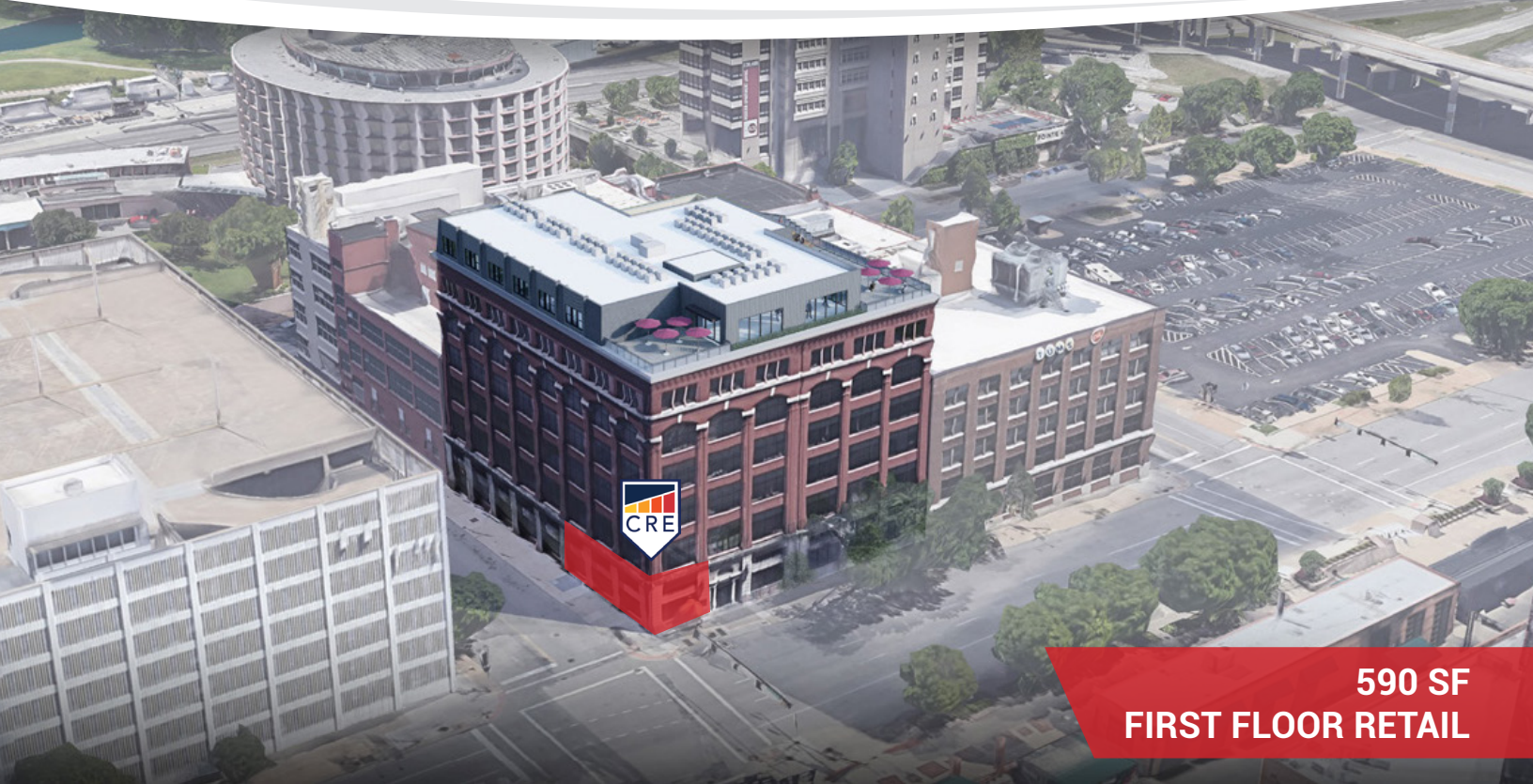
- Flexible footprint
- Cattycorner to Busch Stadium and Ballpark Village
- Completely remodeled, historical building
- Neighboring tenants include Ballpark Village, Salt + Smoke BBQ, Starbucks, Imo's St. Louis Style Pizza and more. (See page 4)
- Owner/broker

### Area Amenities

ARCH 	BARS 	BUSCH STADIUM 	ENTERPRISE CENTER 
ENTERTAINMENT 	GYMS 	HIGHWAY ACCESS 	HOTELS 
PARKS 	RESTAURANTS 	RETAIL 	TRANSPORTATION 

# FOR LEASE

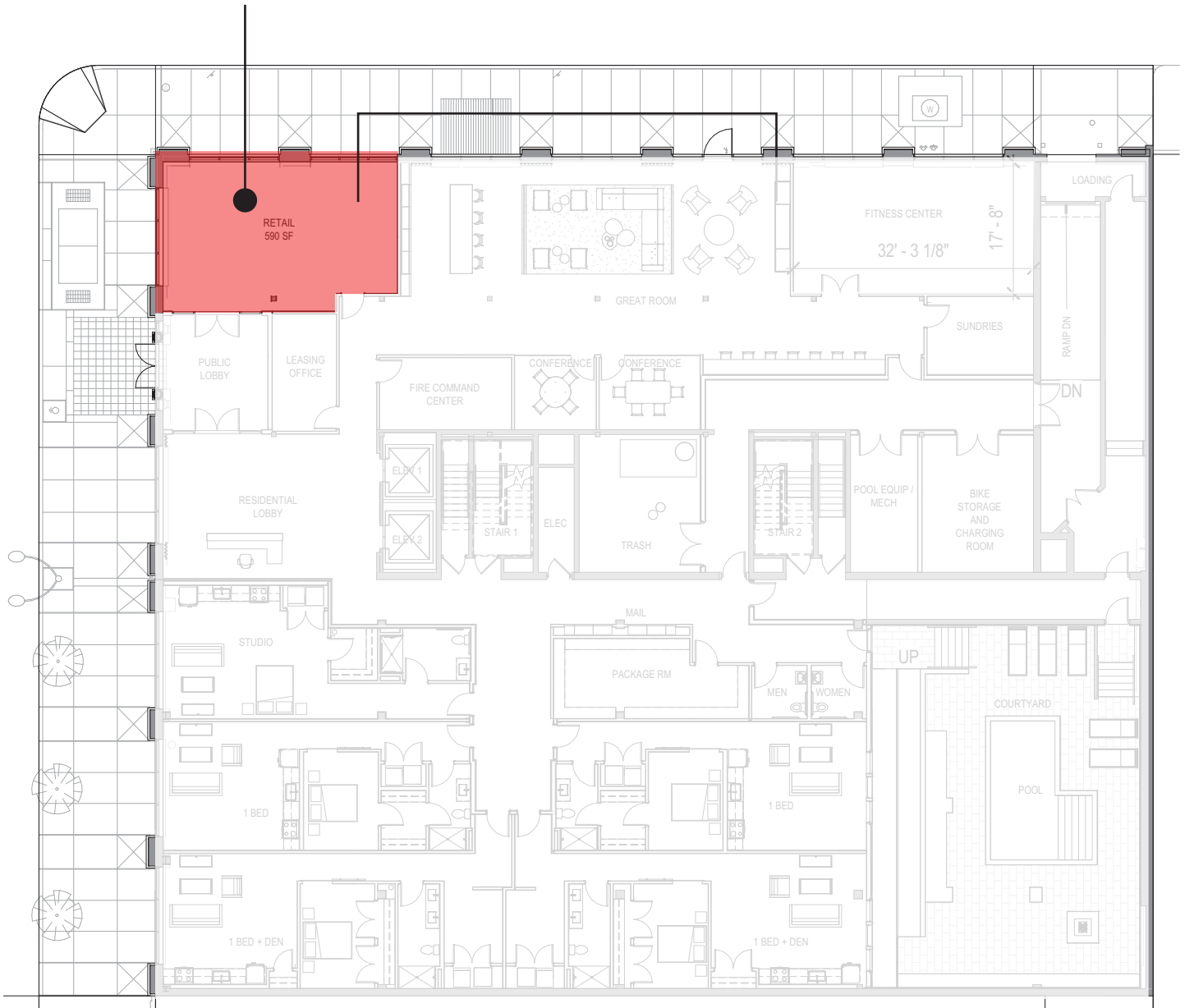
300 S. Broadway



**590 SF  
FIRST FLOOR RETAIL**



AVAILABLE  
590 SF





AMENITIES LESS THAN 1 MILE:

- BALLPARK SAINT LOUIS VILLAGE
- BROADWAY OYSTER BAR
- Budweiser
- BUSCH STADIUM
- CLARK & BOURBON
- CROW'S ROOM
- FOUR SEASONS
- THREE SIXTY
- IMO'S PIZZA
- Laclede's LANDING RIVERFRONT DISTRICT
- LUMIERE PLACE CASINO & HOTELS - ST. LOUIS
- Live! BY LOEWS ST. LOUIS, MO
- PEPPER STADIUM
- SALT + SMOKE BIRD BOONER BEER
- Shark Bar
- Starbucks
- S-T-A-R-T BAR
- THE MIDWESTERN
- The Rock & A Fire Music Shop
- WHEELHOUSE

For more information, please contact:

Dan Dokovic  
Principal  
314.270.5992  
ddokovic@intcre.com

Drew Clary  
VP | Brokerage  
314.445.8551  
dclary@intcre.com