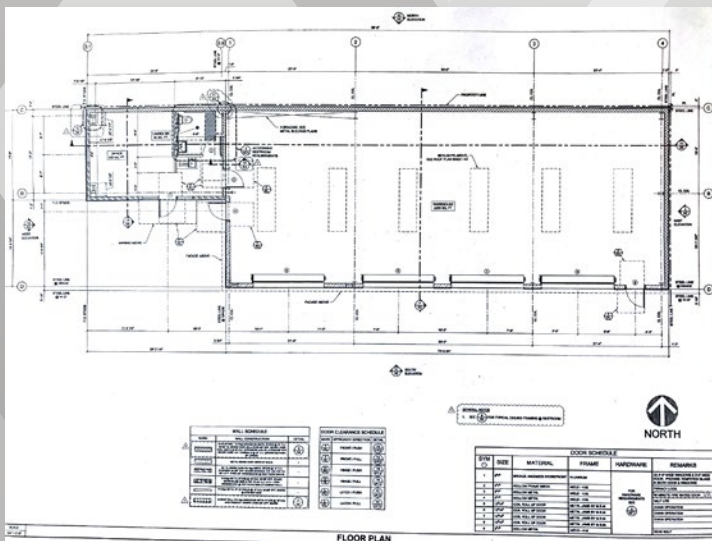




2,253 SF warehouse with 4 roll up doors, 375 SF office and unisex restroom. Under construction. Will be completed in May 2017.

Within one mile of Hwy 99 on/off ramp at Main Street, Turlock.



For more information, please give me a call

Tracee Storms
CalBRE #01219524
(209) 656-2757 | tstorms@pmz.com

