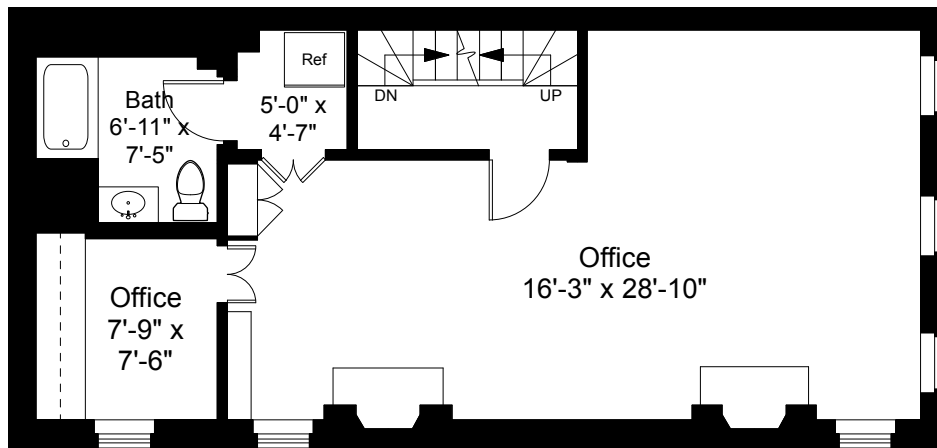


First Floor Plan
Ceiling Height = 12'-9"



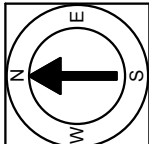
Second Floor Plan
Ceiling Height = 9'-3"

105 Revere Street
Boston, MA 02114



Scale 1/8" = 1'-0"

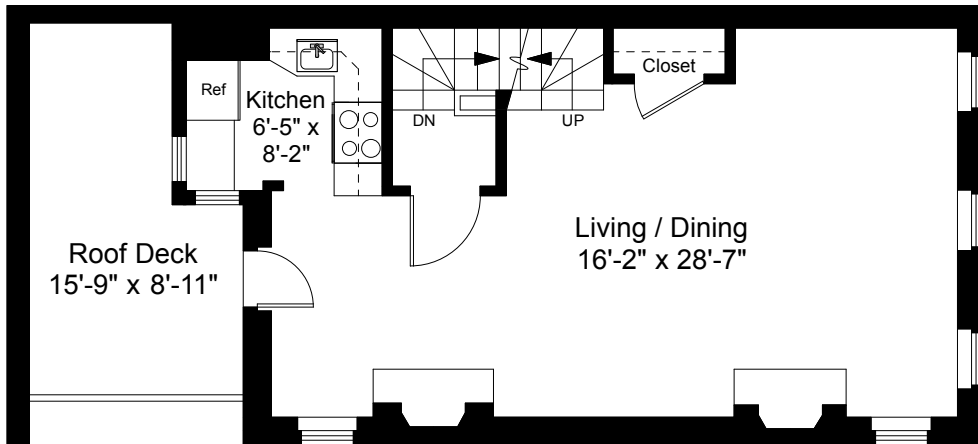
1



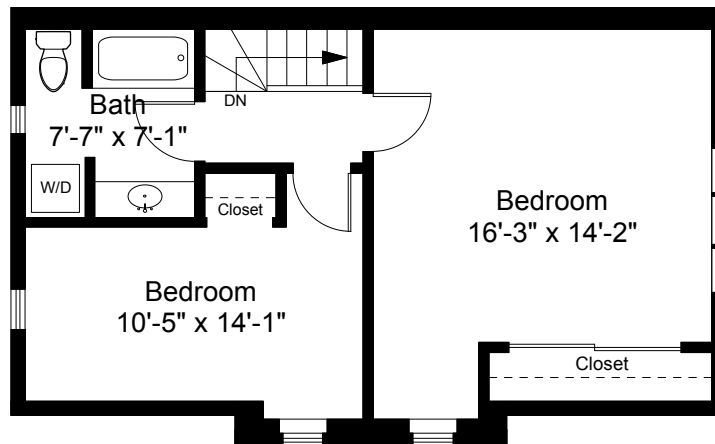
Completed: November 2017

Note: Dimensions are not guaranteed and are provided for informational purposes only. Individual room dimensions are not used to calculate overall square footage.

NATIONAL
FLOOR PLANS
& PHOTOGRAPHY
(800) 328-0217



Third Floor Plan
Ceiling Height = 7'-4"



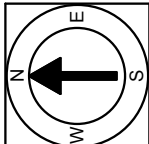
Fourth Floor Plan
Ceiling Height = 7'-3"

105 Revere Street
Boston, MA 02114



Scale 1/8" = 1'-0"

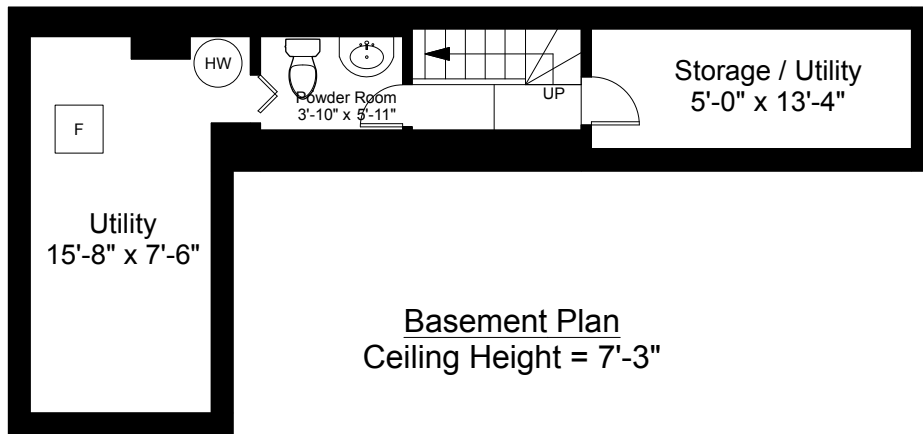
2



Completed: November 2017

Note: Dimensions are not guaranteed and are provided for informational purposes only. Individual room dimensions are not used to calculate overall square footage.

NATIONAL
FLOOR PLANS
& PHOTOGRAPHY
(800) 328-0217

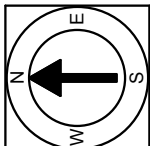


105 Revere Street
Boston, MA 02114



Scale 1/8" = 1'-0"

3



Completed: November 2017

Note: Dimensions are not guaranteed and are provided for informational purposes only. Individual room dimensions are not used to calculate overall square footage.

NATIONAL
FLOOR PLANS
& PHOTOGRAPHY
(800) 328-0217