



CONFIDENTIAL: do not share without explicit permission from Prime Commercial, Inc.

2221 TASMAN DR, SANTA CLARA, CA 95054

Indoor/Outdoor Santa Clara Food, Beverage and Entertainment Opportunity

Adjacent to Levi's Stadium

Interior Building: 3,326 SF

Outdoor Patio: Approx. ~4200 SF

\$5/SF (Interior Building) + **\$1/SF** (Outdoor Patio)

NNNs: \$1.50/SF



- Turnkey beer garden with an AMAZING location right in front of Levi's Stadium
- Highly identity freestanding building
- Fully equipped and available for new tenants to use (including: kitchen equipment, outdoor furniture, entertainment equipment, food truck, and BBQ pit)
- Type 47 Liquor License potentially for sale
- Available within 60 days of a fully executed lease



DO NOT DISTURB CURRENT TENANT!!!

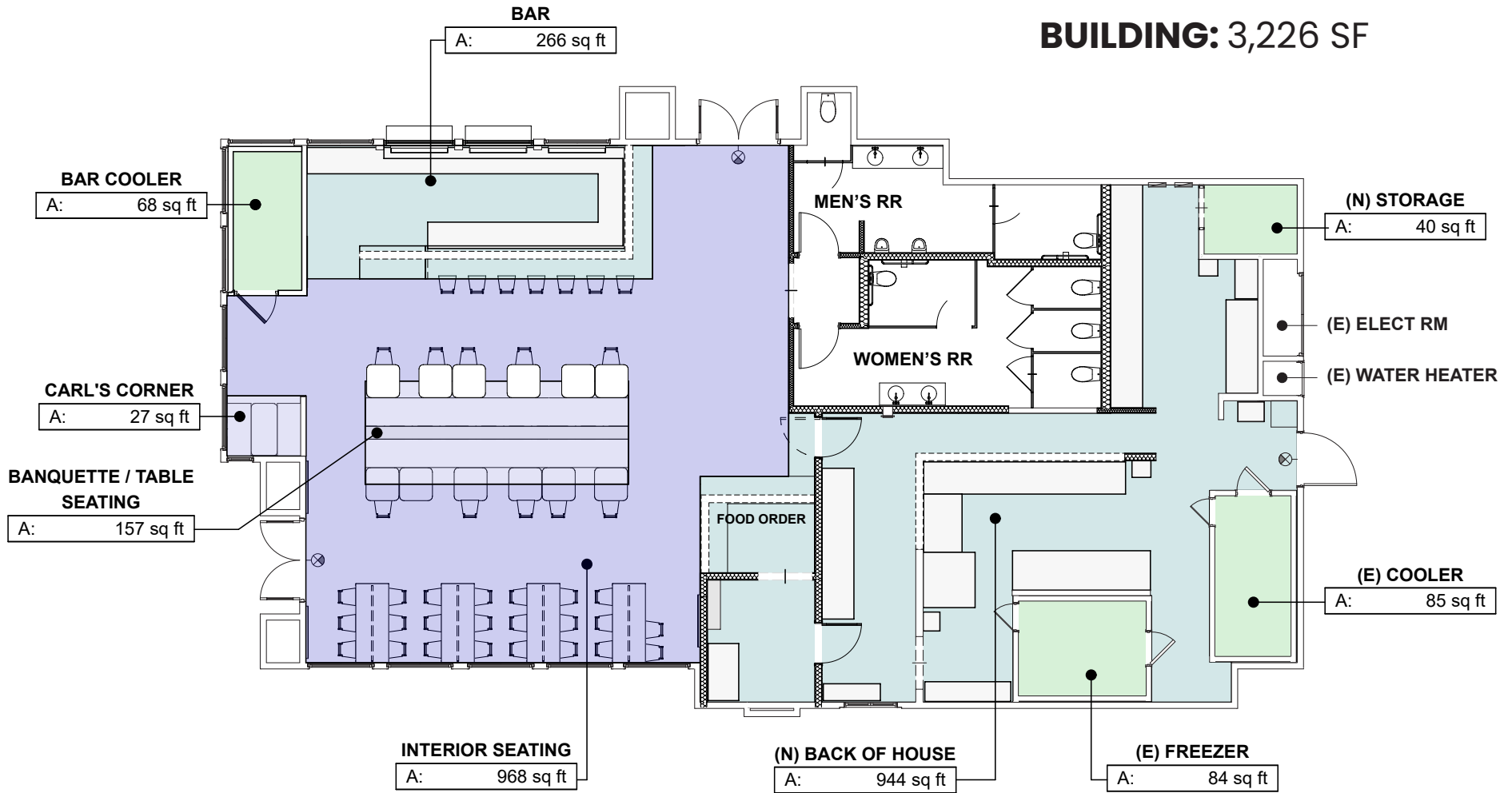
PC INC **PRIME COMMERCIAL**
INCORPORATED

DIXIE DIVINE CA DRE 00926251 & 01481181

(408)313-8900 | ddivine@primecommercialinc.com

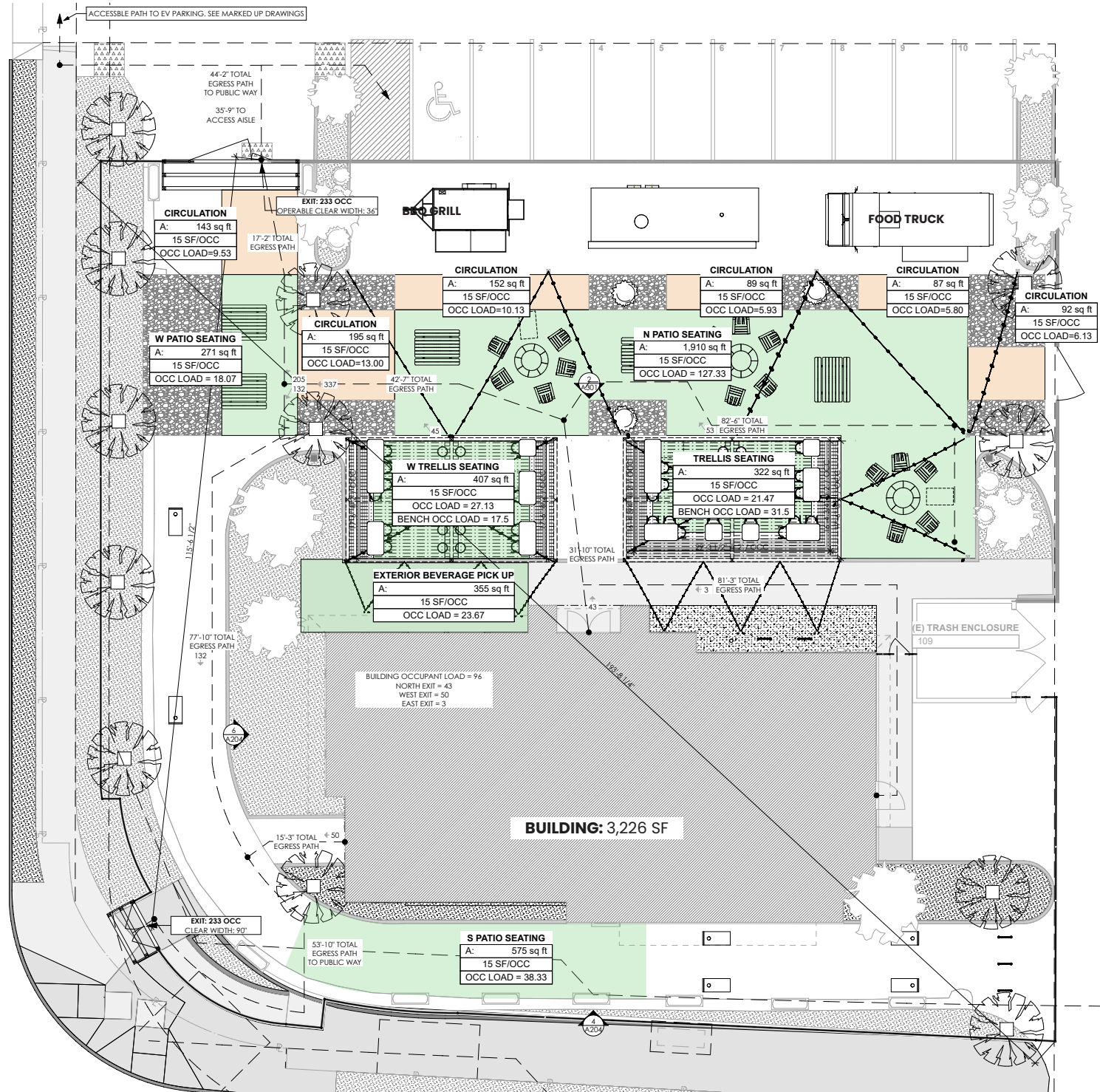
2221 TASMAN DR, SANTA CLARA, CA 95054

Indoor Floor Plan



2221 TASMAN DR, SANTA CLARA, CA 95054

Outdoor Patio Plan



DO NOT DISTURB CURRENT TENANT!!!