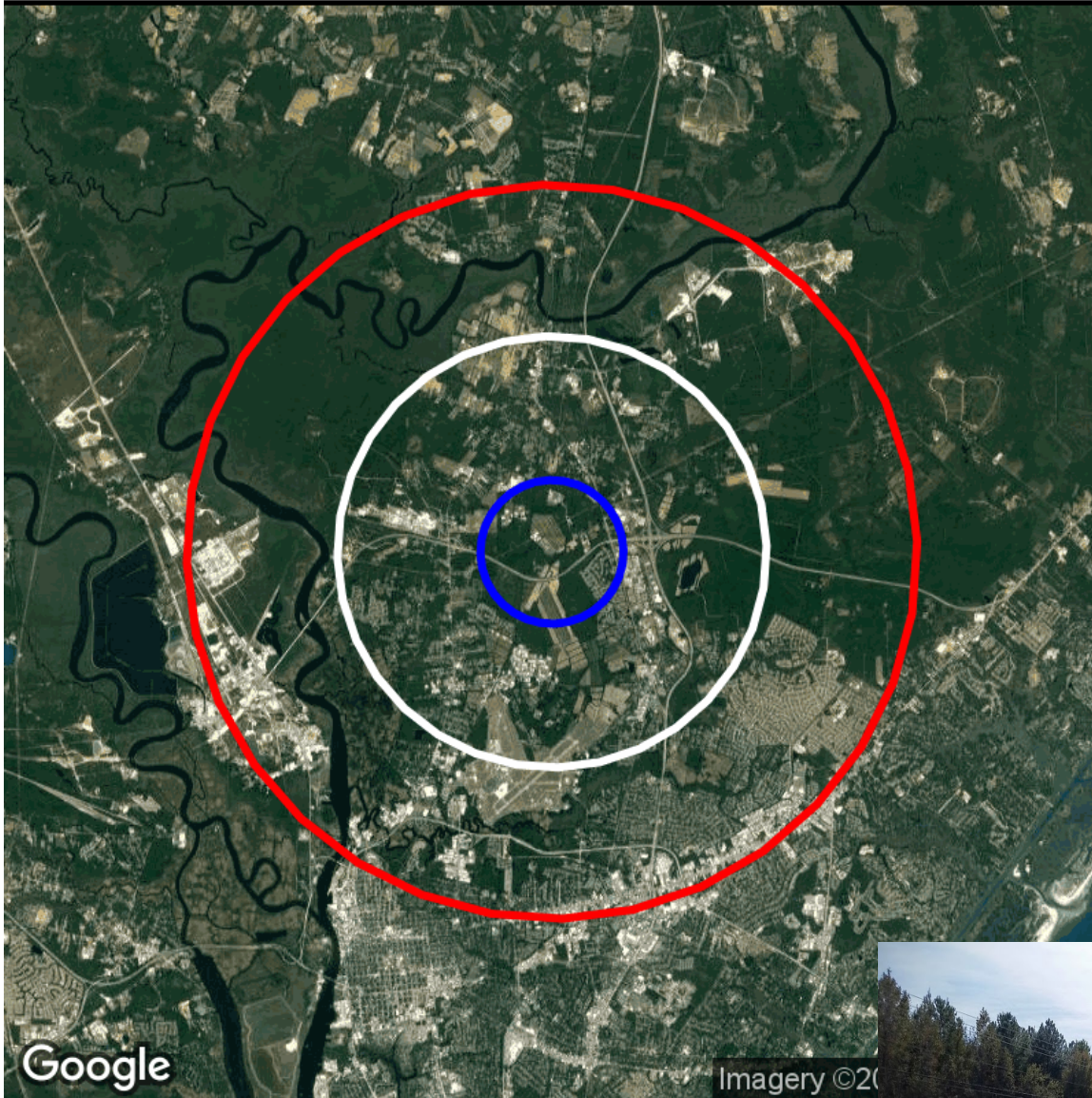


3941 Blue Clay Rd

Demographic Report

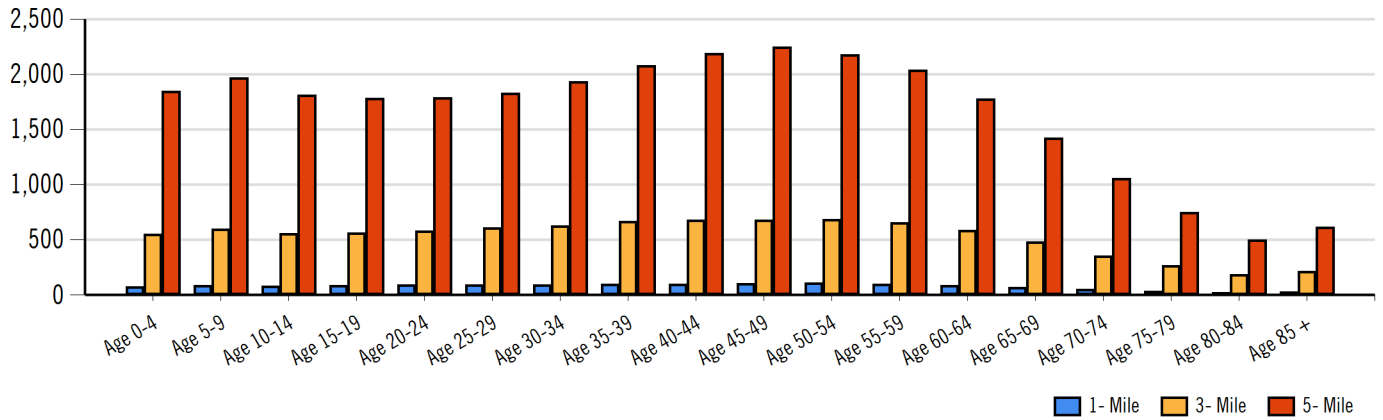


3941 Blue Clay Rd

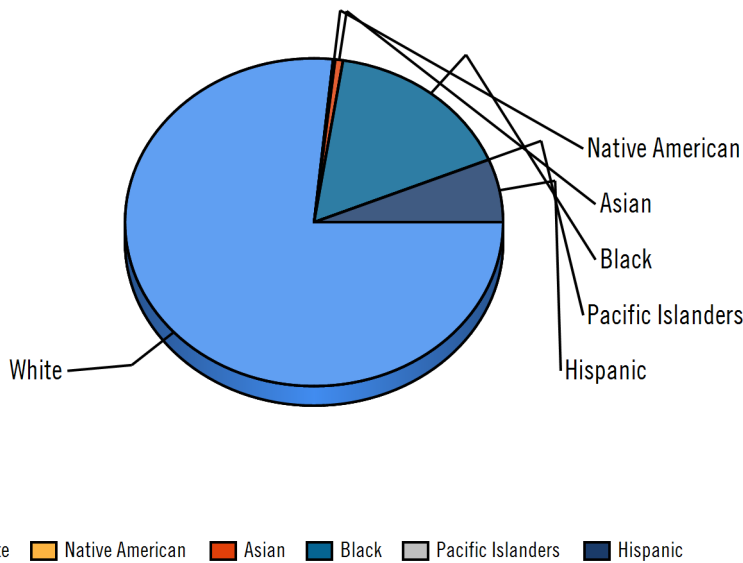


3941 Blue Clay Rd

Population by Distance and Age (2015)



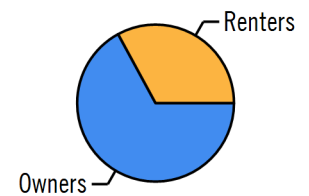
Ethnicity within 5 miles



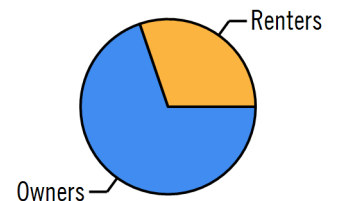
Home Ownership 1 Mile



Home Ownership 3 Mile



Home Ownership 5 Mile



Employment by Distance

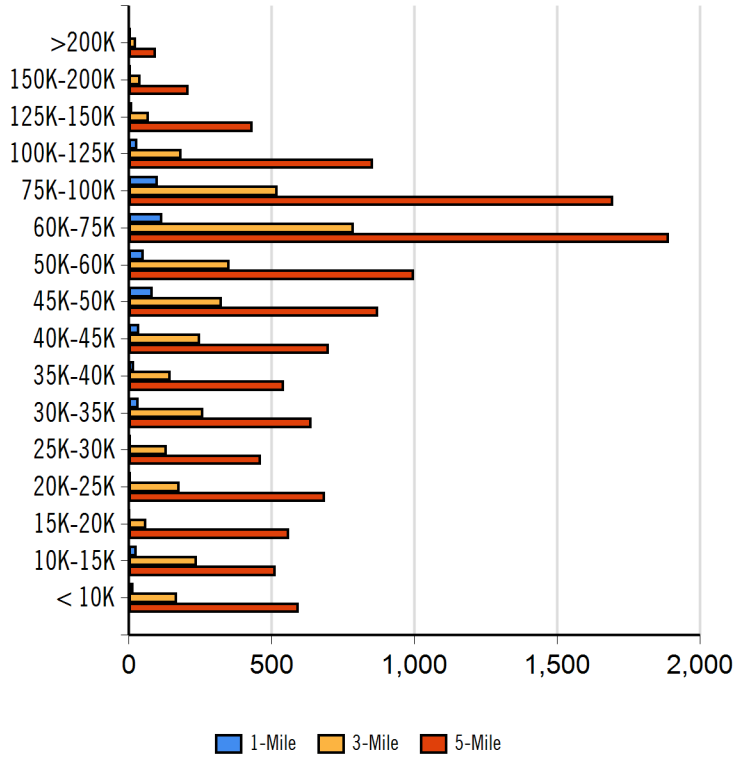
Distance	Employed	Unemployed	Unemployment Rate
1-Mile	877	14	0.65 %
3-Mile	5,528	101	1.41 %
5-Mile	16,740	607	2.86 %

3941 Blue Clay Rd

Labor & Income

	Agriculture	Mining	Construction	Manufacturing	Wholesale	Retail	Transportaion	Information	Professional	Utility	Hospitality	Pub-Admin	Other
1-Mile	0	0	51	106	60	108	51	11	106	278	57	48	65
3-Mile	9	0	388	596	247	856	249	137	555	1,443	502	344	456
5-Mile	43	0	1,315	1,460	558	2,341	930	362	1,707	4,022	1,937	827	1,332

Household Income



Radius	Median Household Income
1-Mile	\$15,620.44
3-Mile	\$29,233.00
5-Mile	\$34,742.85

Radius	Average Household Income
1-Mile	\$16,080.89
3-Mile	\$29,962.66
5-Mile	\$36,768.06

Radius	Aggregate Household Income
1-Mile	\$34,865,416.81
3-Mile	\$213,439,704.32
5-Mile	\$705,657,489.76

Education

	1-Mile	3-mile	5-mile
Pop > 25	1,037	6,784	20,836
High School Grad	287	1,987	6,259
Some College	309	1,870	5,469
Associates	109	705	2,025
Bachelors	128	830	3,309
Masters	32	242	736
Prof. Degree	15	102	190
Doctorate	8	31	50

Tapestry

	1-Mile	3-mile	5-mile
Expensive Homes	0 %	2 %	12 %
Households with 4+ Cars	23 %	55 %	60 %
Military Households	10 %	18 %	43 %
Mobile Homes	51 %	109 %	131 %
New Homes	23 %	59 %	141 %
New Households	25 %	56 %	67 %
Public Transportation Users	0 %	0 %	3 %
Teen's	23 %	45 %	54 %
Vacant Ready For Rent	17 %	24 %	60 %
Young Wealthy Households	69 %	62 %	28 %

This Tapestry information compares this selected market against the average. If a tapestry is over 100% it is above average for that statistic. If a tapestry is under 100% it is below average.

3941 Blue Clay Rd

Expenditures

	1-Mile	%	3-Mile	%	5-Mile	%
Total Expenditures	24,234,423		156,838,490		506,953,117	
Average annual household	46,819		45,139		42,100	
Food	6,182	13.20 %	6,005	13.30 %	5,632	13.38 %
Food at home	3,958		3,864		3,644	
Cereals and bakery products	552		540		509	
Cereals and cereal products	193		189		178	
Bakery products	359		351		331	
Meats poultry fish and eggs	819		800		757	
Beef	203		196		186	
Pork	156		151		142	
Poultry	152		149		141	
Fish and seafood	124		124		118	
Eggs	61		60		57	
Dairy products	401		392		370	
Fruits and vegetables	768		755		710	
Fresh fruits	119		118		110	
Processed vegetables	147		144		136	
Sugar and other sweets	146		142		134	
Fats and oils	122		119		112	
Miscellaneous foods	749		727		685	
Nonalcoholic beverages	349		342		324	
Food away from home	2,223		2,140		1,988	
Alcoholic beverages	362		346		318	
Housing	17,058	36.43 %	16,514	36.58 %	15,470	36.75 %
Shelter	10,336		9,976		9,333	
Owned dwellings	6,369		6,016		5,516	
Mortgage interest and charges	3,309		3,110		2,844	
Property taxes	1,981		1,874		1,719	
Maintenance repairs	1,077		1,031		952	
Rented dwellings	3,289		3,305		3,212	
Other lodging	678		654		604	
Utilities fuels	4,077		3,959		3,714	
Natural gas	420		404		378	
Electricity	1,601		1,568		1,481	
Fuel oil	157		153		141	
Telephone services	1,294		1,247		1,166	
Water and other public services	604		585		546	
Household operations	1,068	2.28 %	1,034	2.29 %	968	2.30 %
Personal services	309		302		284	
Other household expenses	757		728		678	
Housekeeping supplies	578		567		535	
Laundry and cleaning supplies	152		151		144	
Other household products	329		320		301	
Postage and stationery	96		95		90	
Household furnishings	998		977		918	
Household textiles	60		61		58	
Furniture	157		159		151	
Floor coverings	9		9		8	
Major appliances	170		154		140	
Small appliances	89		86		81	
Miscellaneous	512		508		478	
Apparel and services	1,279	2.73 %	1,276	2.83 %	1,226	2.91 %
Men and boys	255		256		246	
Men 16 and over	208		209		200	
Boys 2 to 15	46		46		45	
Women and girls	503		499		474	

3941 Blue Clay Rd

Women 16 and over	417	414	392
Girls 2 to 15	86	85	82
Children under 2	89	87	84

Expenditures (Continued)

	1-Mile	%	3-Mile	%	5-Mile	%
Total Expenditures	24,234,423		156,838,490		506,953,117	
Average annual household	46,819		45,139		42,100	
Transportation	6,325	13.51 %	6,094	13.50 %	5,696	13.53 %
Vehicle purchases	1,089		1,053		1,002	
Cars and trucks new	196		153		153	
Cars and trucks used	837		844		799	
Gasoline and motor oil	2,261		2,169		2,019	
Other vehicle expenses	2,571		2,468		2,297	
Vehicle finance charges	225		209		190	
Maintenance and repairs	831		799		746	
Vehicle insurance	1,167		1,099		1,009	
Vehicle rental leases	334		324		301	
Public transportation	404		403		378	
Health care	3,843	8.21 %	3,702	8.20 %	3,430	8.15 %
Health insurance	2,326		2,235		2,065	
Medical services	778		749		682	
Drugs	428		411		379	
Medical supplies	118		115		106	
Entertainment	2,717	5.80 %	2,631	5.83 %	2,435	5.78 %
Fees and admissions	511		486		446	
Television radios	1,052		1,014		947	
Pets toys	878		863		804	
Personal care products	587		574		538	
Reading	66		65		61	
Education	882		897		872	
Tobacco products	408		401		380	
Miscellaneous	852	1.82 %	779	1.73 %	710	1.69 %
Cash contributions	1,545		1,413		1,287	
Personal insurance	4,904		4,626		4,235	
Life and other personal insurance	206		198		182	
Pensions and Social Security	4,698		4,428		4,053	

Distance	Year	Estimated Households			Housing Occupied By		Housing Occupancy		
		Projection	2000	Change	1 Person	Family	Owner	Renter	Vacant
1-Mile	2015	700	650	7.82 %	163	487	571	129	71
3-Mile	2015	691	639	7.88 %	171	464	490	201	36
5-Mile	2015	929	827	9.85 %	240	582	604	325	48
1-Mile	2020	758	650	16.42 %	177	527	623	134	97
3-Mile	2020	749	639	16.66 %	185	503	536	213	62
5-Mile	2020	1019	827	19.37 %	264	637	664	354	68