



The Commonwealth of Pennsylvania - Governor Edward Rendell

The City of Reading - Mayor Thomas McMahon

Architect - The Office of Edward V. Giannasca, AIA, NCARB

**GIANNASCA
DEVELOPMENT GROUP LLC**

1030 WOODSHIRE LANE • STREET, MD 21154
P. (410) 452-0872 • F. (410) 452-0876

1751 SECOND AVENUE • NEW YORK, NY 10128
P. (212) 876-1020 • F. (212) 876-1003

531 CANAL STREET • READING, PA 19602
P. (610) 685-2555 • F. (610) 685-2552

PARCEL 1 - BUILDING "A" - OFFICES 6/05/09

DEVELOPMENT TEAM

DEVELOPER:
GIANNASCA DEVELOPMENT GROUP LLC
531 CANAL STREET
READING, PA 19602
OFFICE: (610) 685-2555
FAX: (610) 685-2552

EDWARD V. GIANNASCA, CHAIRMAN
EGiannascaSr@GiannascaDevelopment.com
EDWARD V. GIANNASCA II, PRESIDENT & CEO
EGiannasca@GiannascaDevelopment.com
JAMES BURDGE, CHIEF OPERATING OFFICER
JBurdge@GiannascaDevelopment.com
ALICIA F. GIANNASCA, VICE PRESIDENT & CFO
AGiannasca@GiannascaDevelopment.com
JIM McHALE, DIRECTOR OF COMMUNITY DEVELOPMENT
JMcHale@GiannascaDevelopment.com

PROJECT ADVISORY BOARD:
ALBERT BOSCOV aboscov@boscovs.com
DIRECTLINK
2561 BERNVILLE ROAD
READING, PA 19605
PHONE: (610) 898-6049
FAX: (610) 370-3770

DAVID L. THUN, CHAIRMAN dthun@riverplacepa.com
RIVERPLACE DEVELOPMENT CORP.
201 WASHINGTON ST., SUITE 541
READING, PA 19601
PHONE: (610) 736-3900
FAX: (610) 736-3988

P. MICHAEL EHLERMAN, CHAIRMAN ehlermanm@yuasainc.com
SOVEREIGN BANCORP
11 CARDINAL PLACE
WYOMISSING, PA 19610
PHONE: (610) 208-1800
FAX: (610) 568-1123

PROJECT FINANCING:
COOPER-HOROWITZ
51 EAST 42nd STREET
NEW YORK, NY 10017
OFFICE: (212) 986-8400
FAX: (212) 983-0512
BRUCE MARKUS - EXECUTIVE VICE PRESIDENT
BMarkus@cooper-horowitz.com

PROJECT ARCHITECT:
THE OFFICE OF EDWARD V. GIANNASCA, ARCHITECT
1751 SECOND AVENUE
NEW YORK, NY 10128
OFFICE: (212) 876-1020
FAX: (212) 876-1003
EDWARD V. GIANNASCA, AIA, NCARB
EGiannascaSr@GiannascaDevelopment.com
PAUL GALLO, RA PGallo@GiannascaDevelopment.com

LOCAL ARCHITECT:
LOUIS MASCIOTTI, RA masciottiar@enter.net
531 CANAL STREET, SUITE 204
READING, PA 19602
OFFICE: (610) 374-4621
FAX: (610) 374-7768

LANDSCAPE ARCHITECT, CIVIL ENGINEER, LAND SURVEYOR:
STACKHOUSE BENSINGER INC.
330 REVERE BOULEVARD
SINKING SPRING, PA 19608
OFFICE: (610) 777-8000
FAX: (610) 796-2983
ROBERT P. STACKHOUSE, RLA, ASLA, PRESIDENT
rstackhouse@stseinc.com
STEPHEN H. BENSINGER, PLS, PRINCIPAL
sbensinger@stseinc.com
GRANT T. SMITH, RLA, ASLA,
SENIOR PROJECT MANAGER gsmith@stseinc.com

CONSTRUCTION MANAGER:
RIVERVIEW CONTRACTING COMPANY LLC
531 CANAL STREET, SUITE 401
READING, PA 19602
OFFICE: (610) 685-2555
FAX: (610) 685-2552
EDWARD V. GIANNASCA II, MANAGER
EGiannasca@GiannascaDevelopment.com
MICHAEL BURDGE - FIELD MANAGER BurdgeMike@optonline.net
SUSAN ENGLEHARDT, LEED AP sdmengelhardt@yahoo.com

ENVIRONMENTAL CONSULTANT:
LIBERTY ENVIRONMENTAL, INC.
10 NORTH FIFTH STREET, SUITE 800
READING, PA 19601
OFFICE: (610) 375-9301
FAX: (610) 375-9302
DAVID S. COYNE, PROJ. MGR. Dcoyne@libertyenviro.com

LOCAL AFFAIRS LIAISON:
WILLOW HOLDINGS, INC.
531 CANAL STREET
READING, PA 19602
OFFICE: (610) 375-7999
FAX: (610) 375-8094
BILL MCSHANE - PROJECT CONSULTANT wmcsc@p-wave.com
MARK SCHLOTT, SITE COORDINATOR mlschlott@comcast.net

PROJECT FINANCING COUNSEL:
NIXON PEABODY LLP
401 9TH STREET, N.W., SUITE 900
WASHINGTON, DC 20004
PHONE: (202) 585-8000
FAX: (202) 585-8080
HERBERT F. STEVENS, PARTNER
hstevens@nixonpeabody.com
BRUCE M. SERCHUK, PARTNER
bserchuk@nixonpeabody.com
MICHAEL J. GOLDMAN, ASSOCIATE
mjgoldman@nixonpeabody.com

OFFICE & RESIDENTIAL FURNITURE:
WASHINGTON BUSINESS PRODUCTS
2899 JESSUP ROAD
JESSUP, MD 21904
TOLL FREE (877) 978-8500
OFFICE (301) 277-6276
FAX (301) 277-1446
STEPHEN MARKHAM
stevem@jeffersonbusinessinteriors.com

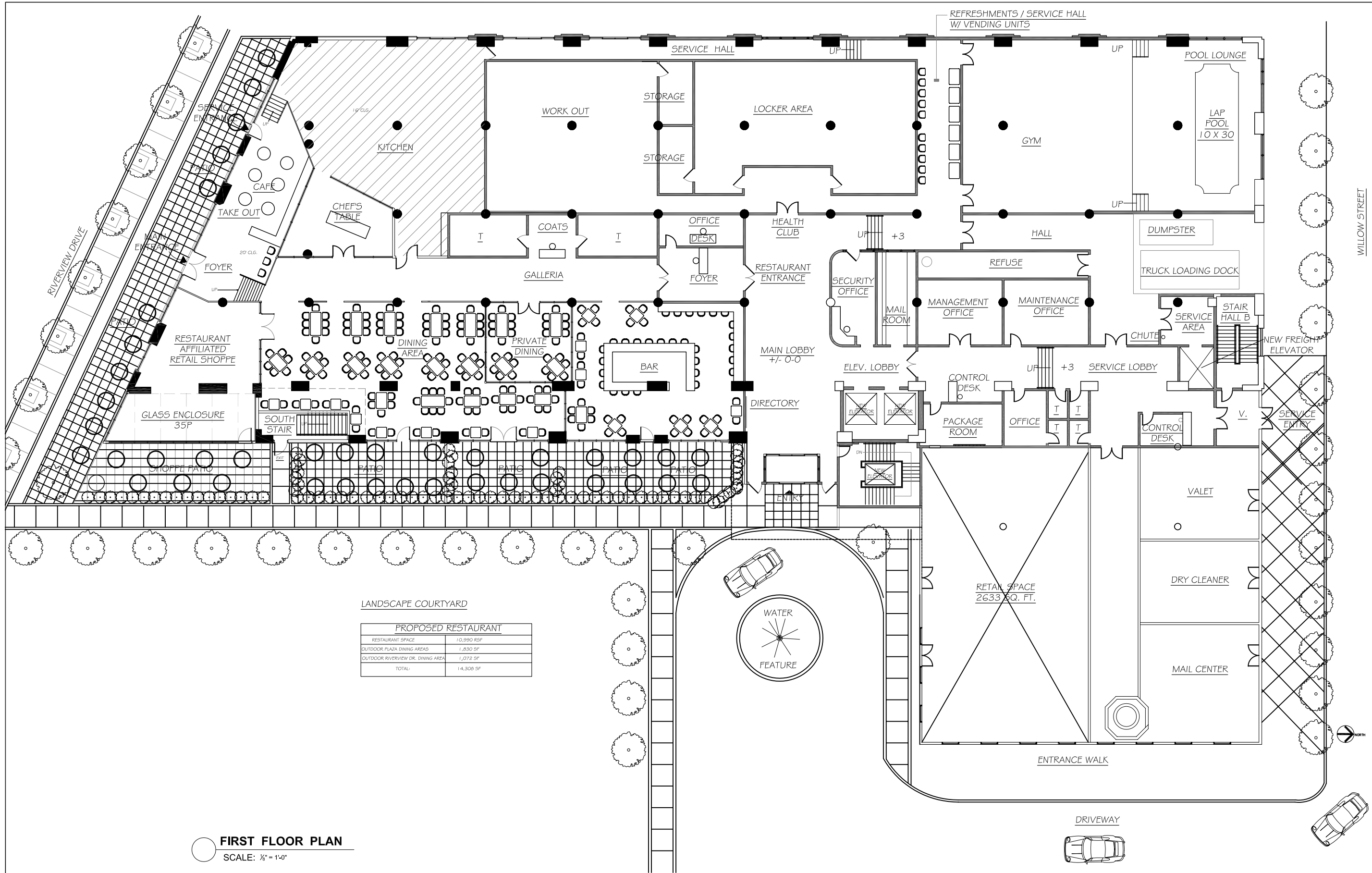
PUBLIC RELATIONS:
HARRIS, BAO & MCCULLOUGH
520 S. FRONT STREET
PHILADELPHIA, PA 19147
OFFICE: (215) 440-9800
FAX: (215) 440-9813
CHILTON G. GOEBEL, JR., SENIOR VICE PRESIDENT
Chick@hbmadv.com
JAMES LEUPOLD, VICE PRESIDENT jim@hbmadv.com
KURT W. ANDERSEN, ACCOUNT EXECUTIVE
kurt@hbmadv.com
JACLYN BERGMAN, ASSIST. ACCOUNT EXECUTIVE
jaclyn@hbmadv.com

MARKET ANALYSIS/ PROJECT APPRAISER:
PKF CONSULTING
4400 POST OAK PARKWAY, SUITE 1940
HOUSTON, TX 77027
OFFICE: (713) 621-5252
FAX: (713) 621-9494
JOHN KEELING, SENIOR VICE PRESIDENT
John.keeling@pkfc.com

TITLE COMPANY:
SENTRY ABSTRACT COMPANY
1025 BERKSHIRE BLVD., SUITE 600
WYOMISSING, PA 19610
OFFICE (610) 376-4500
FAX (610) 288-2676
CHIP LUTZ
chip@sentryabstract.com

DRAWING INDEX

- A - 1 FIRST FLOOR PLAN
- A - 1A SITE PLAN SKETCH
- A - 2 SECOND FLOOR PLAN
- A - 3 THIRD FLOOR PLAN
- A - 4 FORTH FLOOR PLAN
- A - 5 FIFTH FLOOR PLAN
- A - 6 SIXTH FLOOR PLAN
- A - 7 SEVENTH FLOOR PLAN
- A - 8 ROOF TOP RESTAURANT AND PENTHOUSE APARTMENTS FLOOR PLANS
- A - 10 EAST ELEVATION
- A - 11 WEST ELEVATION
- A - 12 NORTH & SOUTH ELEVATIONS
- A - 13 EXTERIOR DETAILS
- A - 14 INTERIOR DETAILS
- A - 15 RETAIL & RESTAURANT SPACE DETAILS
- A - 16 COMMERCIAL OFFICE SPACE DETAILS
- A - 17 APARTMENT TYPE "PH" PLAN & DETAILS
- A - 18 PARTITION TYPES
- A - 19 DOOR SCHEDULE & DETAILS
- A - 20 WINDOW SCHEDULE & DETAILS
- A - 21 FINISH SCHEDULES

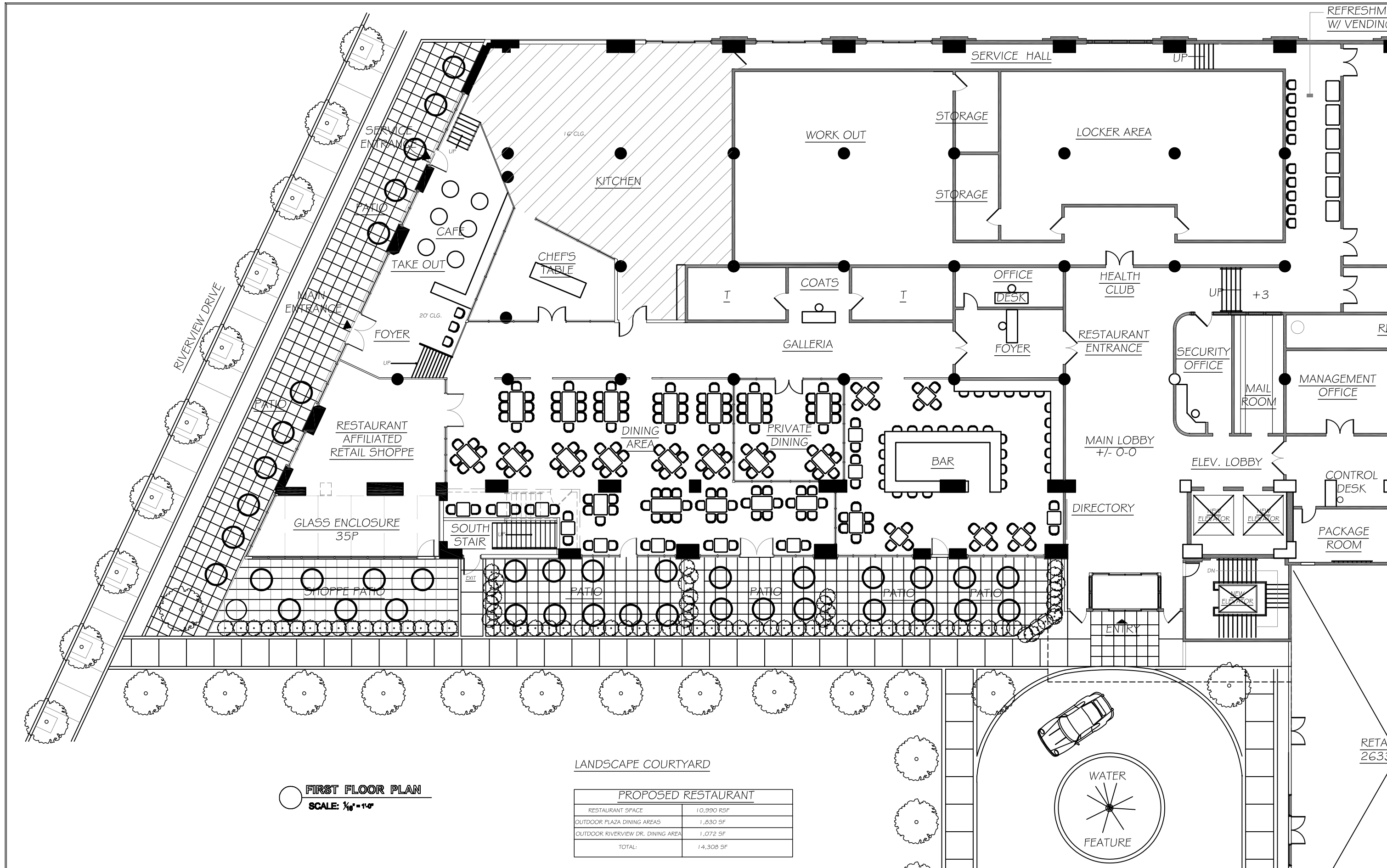


LANDSCAPE COURTYARD

PROPOSED RESTAURANT	
RESTAURANT SPACE	10,890 RSF
OUTDOOR PLAZA DINING AREAS	1,830 SF
OUTDOOR RIVERVIEW DR. DINING AREA	1,072 SF
TOTAL	14,306 SF

FIRST FLOOR PLAN
SCALE: 1/8" = 1'-0"





○ FIRST FLOOR PLAN
SCALE: 1/8" = 1'-0"

LANDSCAPE COURTYARD

PROPOSED RESTAURANT	
RESTAURANT SPACE	10,990 RSF
OUTDOOR PLAZA DINING AREAS	1,830 SF
OUTDOOR RIVERVIEW DR. DINING AREA	1,072 SF
TOTAL:	14,308 SF

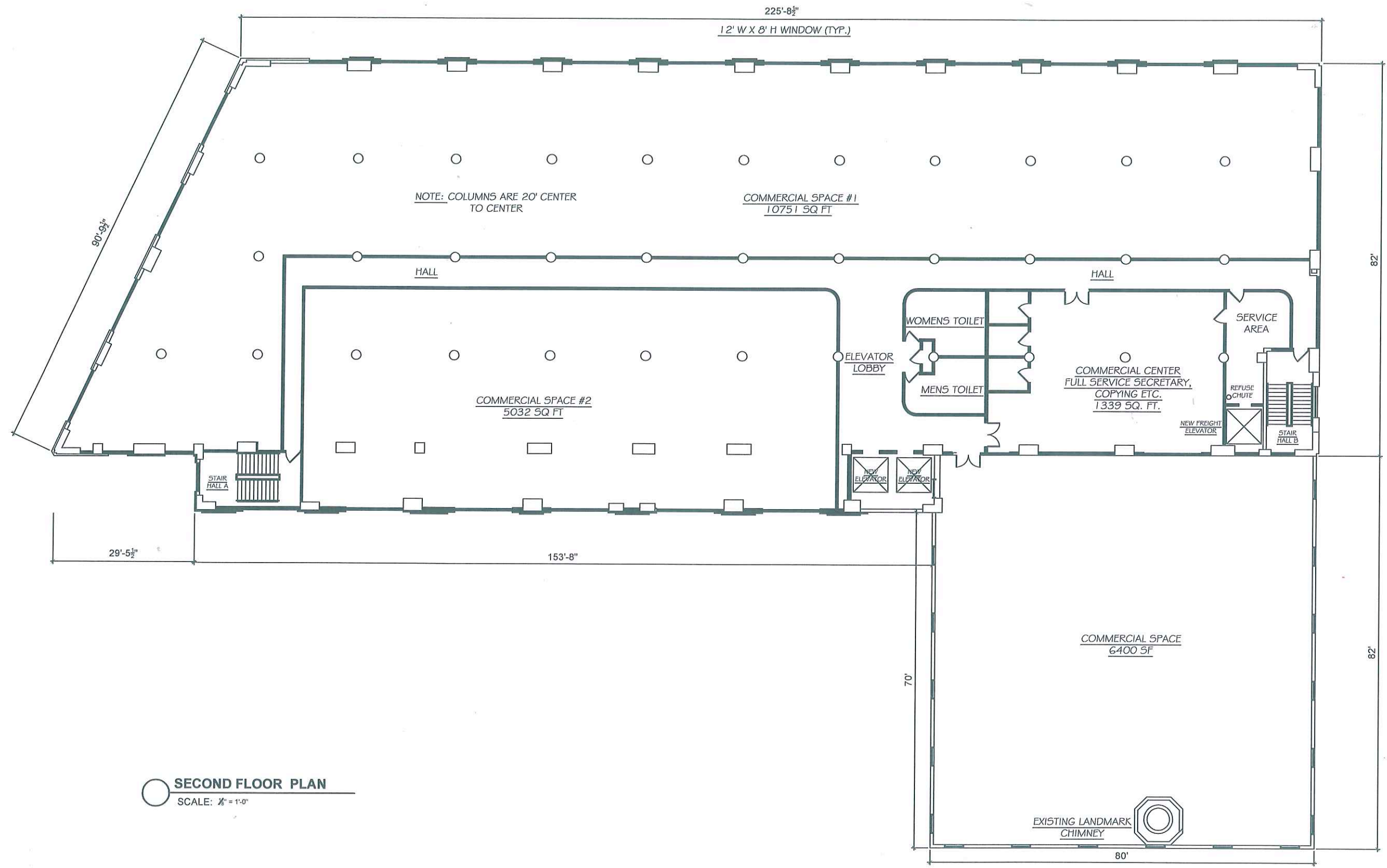
GIANNASCA
DEVELOPMENT GROUP LLC

Project Title:
RIVERVIEW LOFTS - PARCEL 1 - BUILDING A
READING, PA.

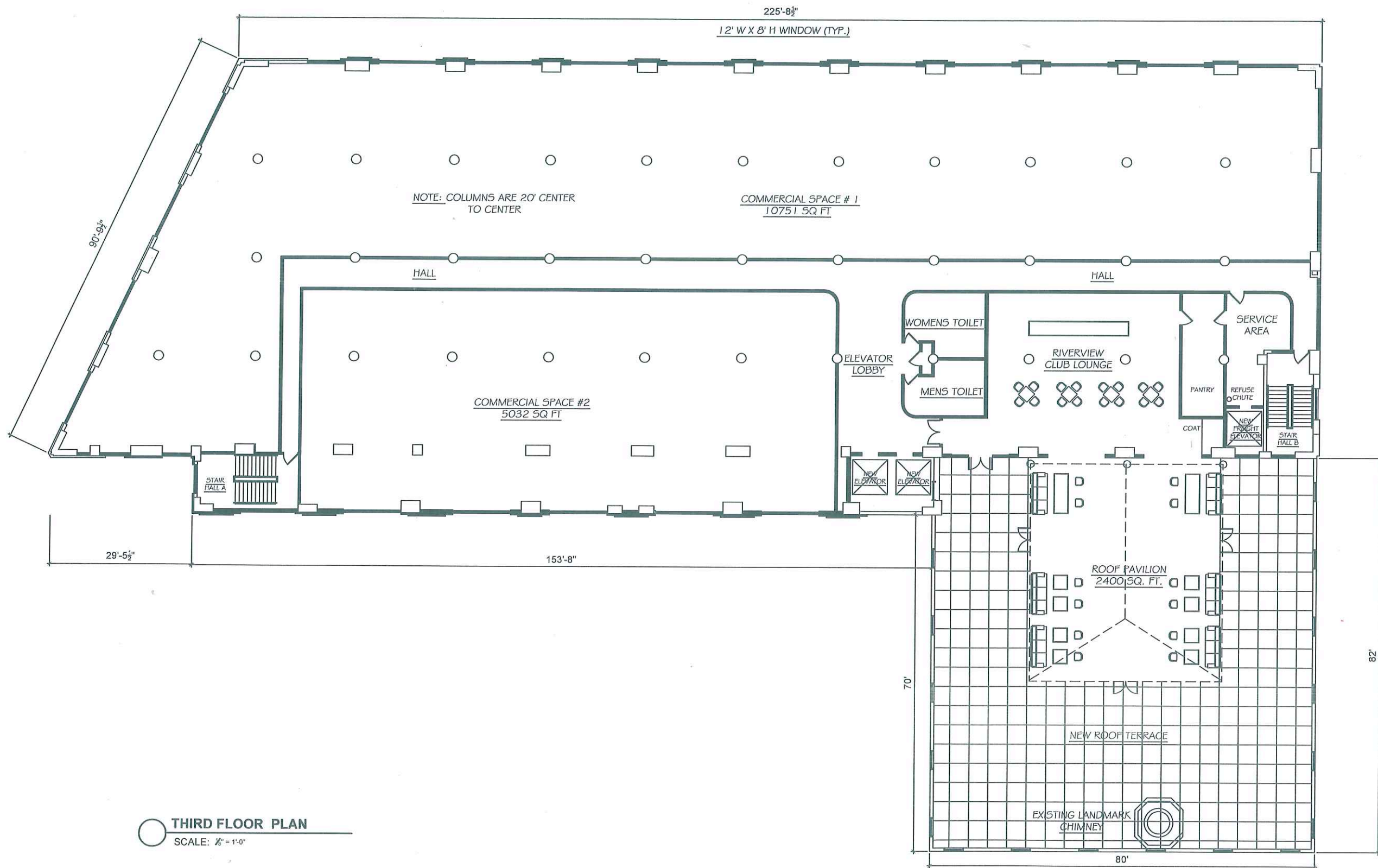


EDWARD V. GIANNASCA - ARCHITECT
1751 SECOND AVENUE
TEL. (212) 876-1020
NEW YORK, NY 10128
FAX (212) 876-1003

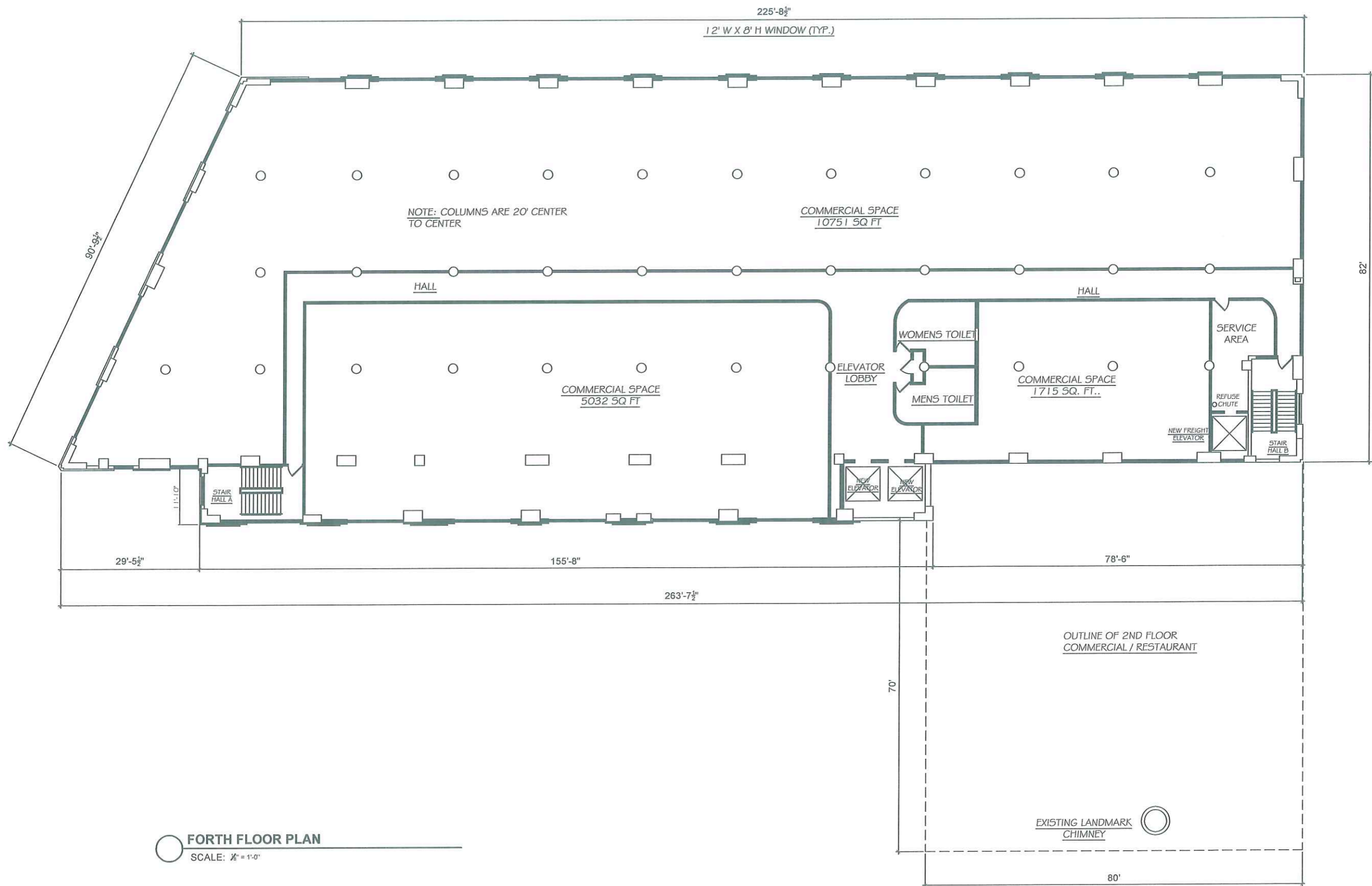
DATE: 08-01-2008
BY: P.H.J/D
SCALE: 1/16" = 1'-0"
DRAWING No.
A-1



SECOND FLOOR PLAN
SCALE: 1/8" = 1'-0"

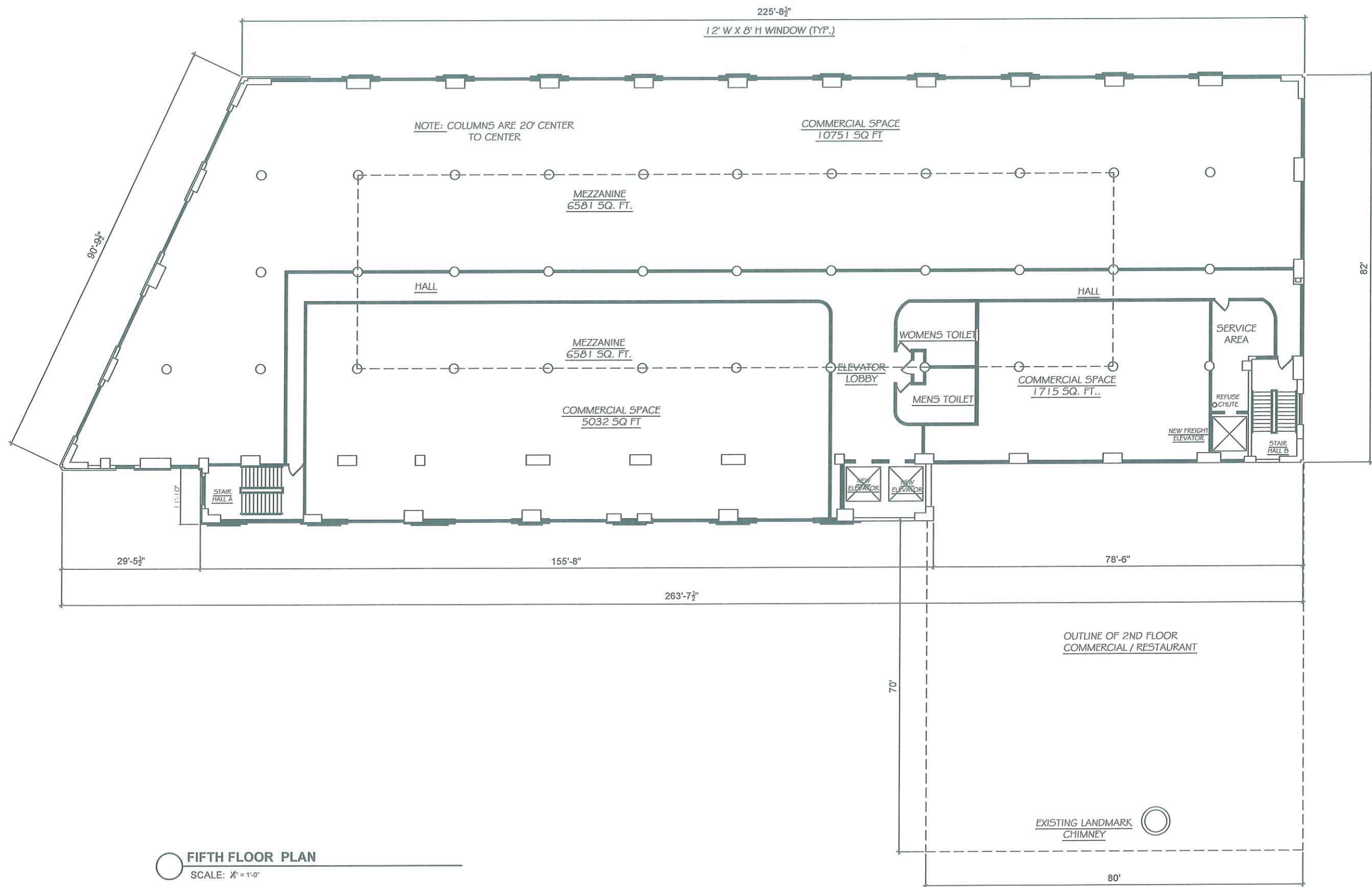


○ **THIRD FLOOR PLAN**
SCALE: 1/8" = 1'-0"



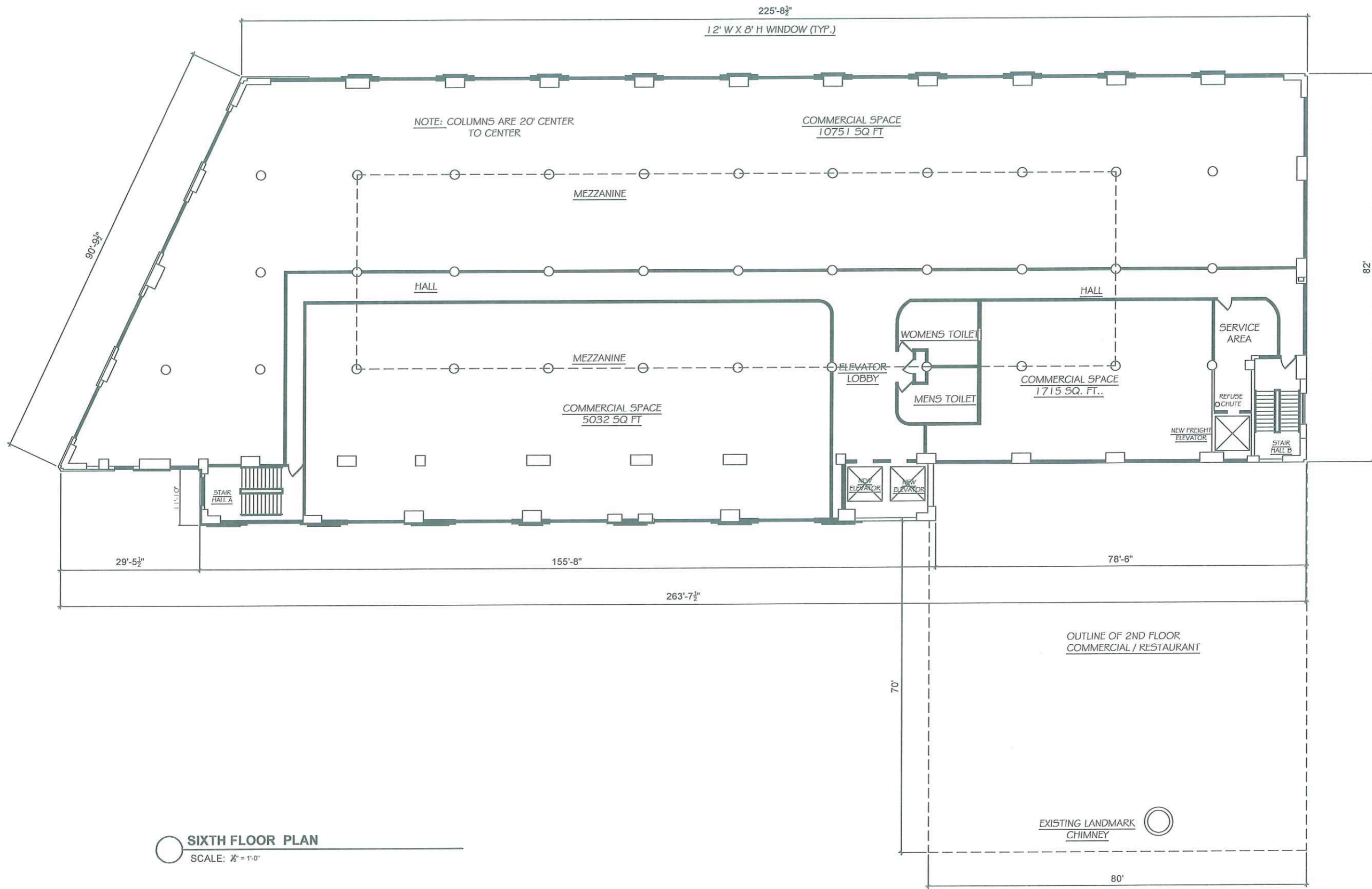
FORTH FLOOR PLAN
SCALE: 1/8" = 1'-0"





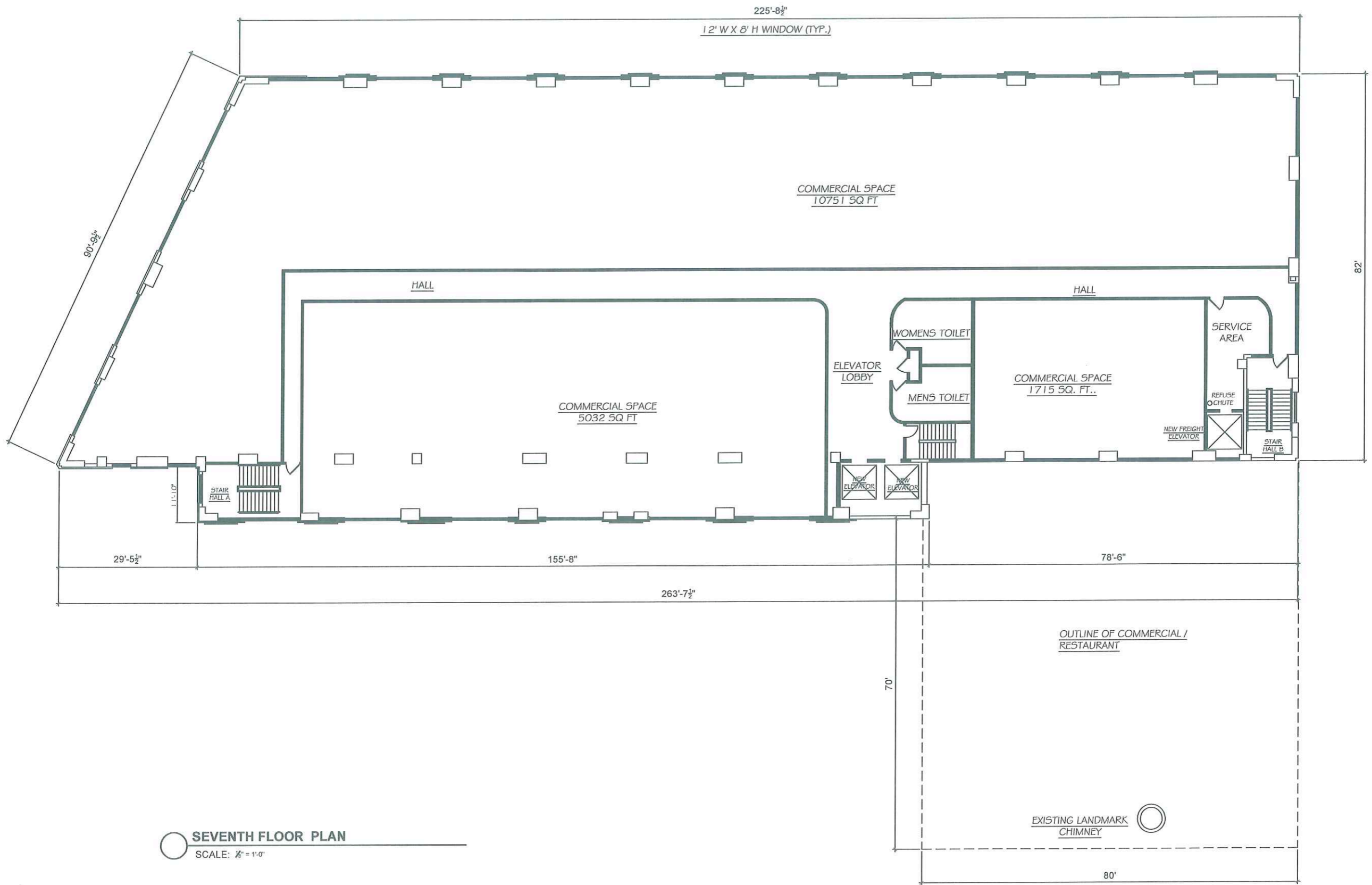
FIFTH FLOOR PLAN
SCALE: 1/8" = 1'-0"



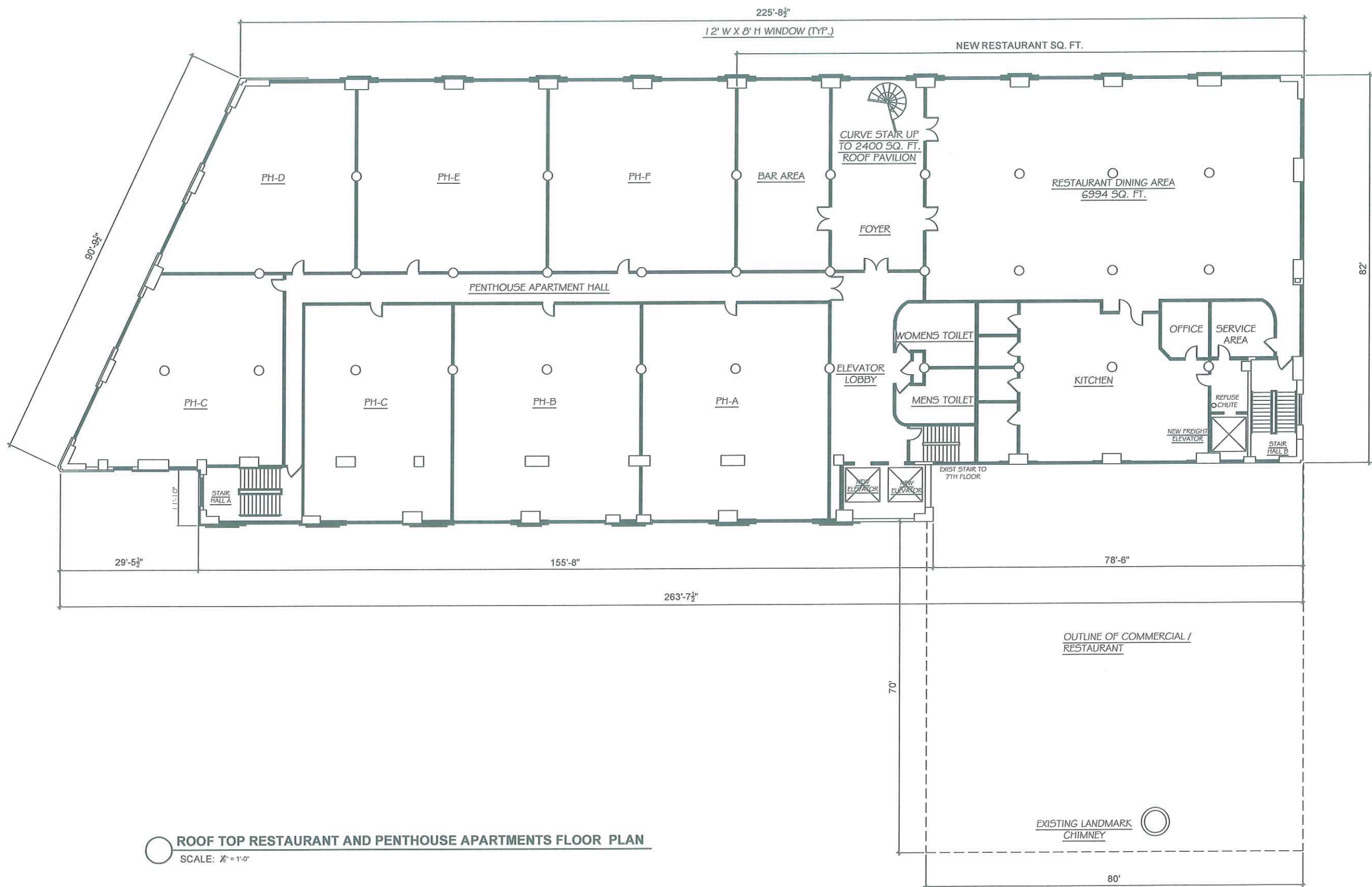


SIXTH FLOOR PLAN
SCALE: 1/8" = 1'-0"



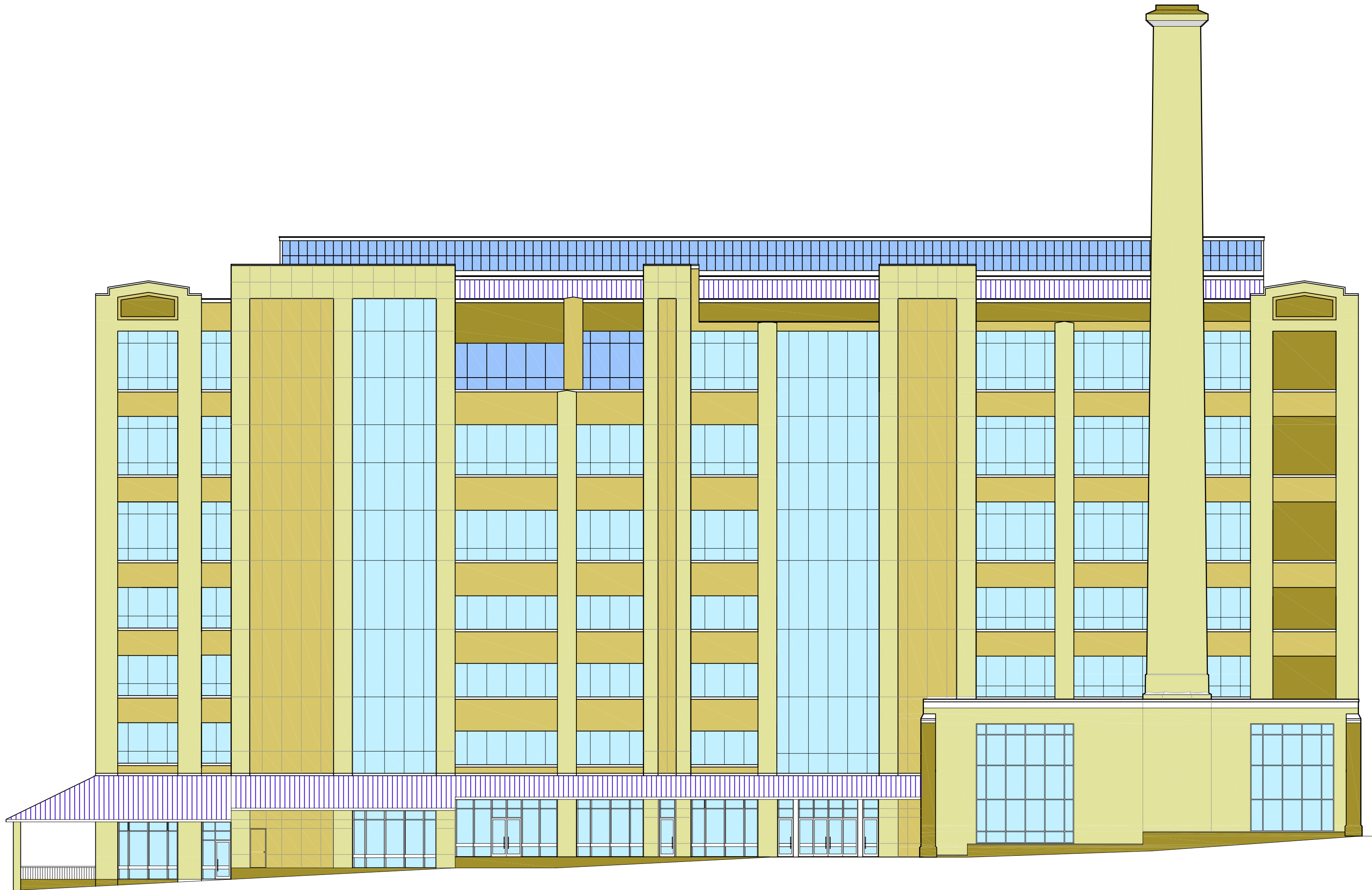


○ SEVENTH FLOOR PLAN
SCALE: 1/8" = 1'-0"




ROOF TOP RESTAURANT AND PENTHOUSE APARTMENTS FLOOR PLAN
 SCALE: 1/8" = 1'-0"





EAST ELEVATION

SCALE 1/16"=1'-0"



COURTYARD (EAST) ELEVATION



CANAL STREET (SOUTH) ELEVATION



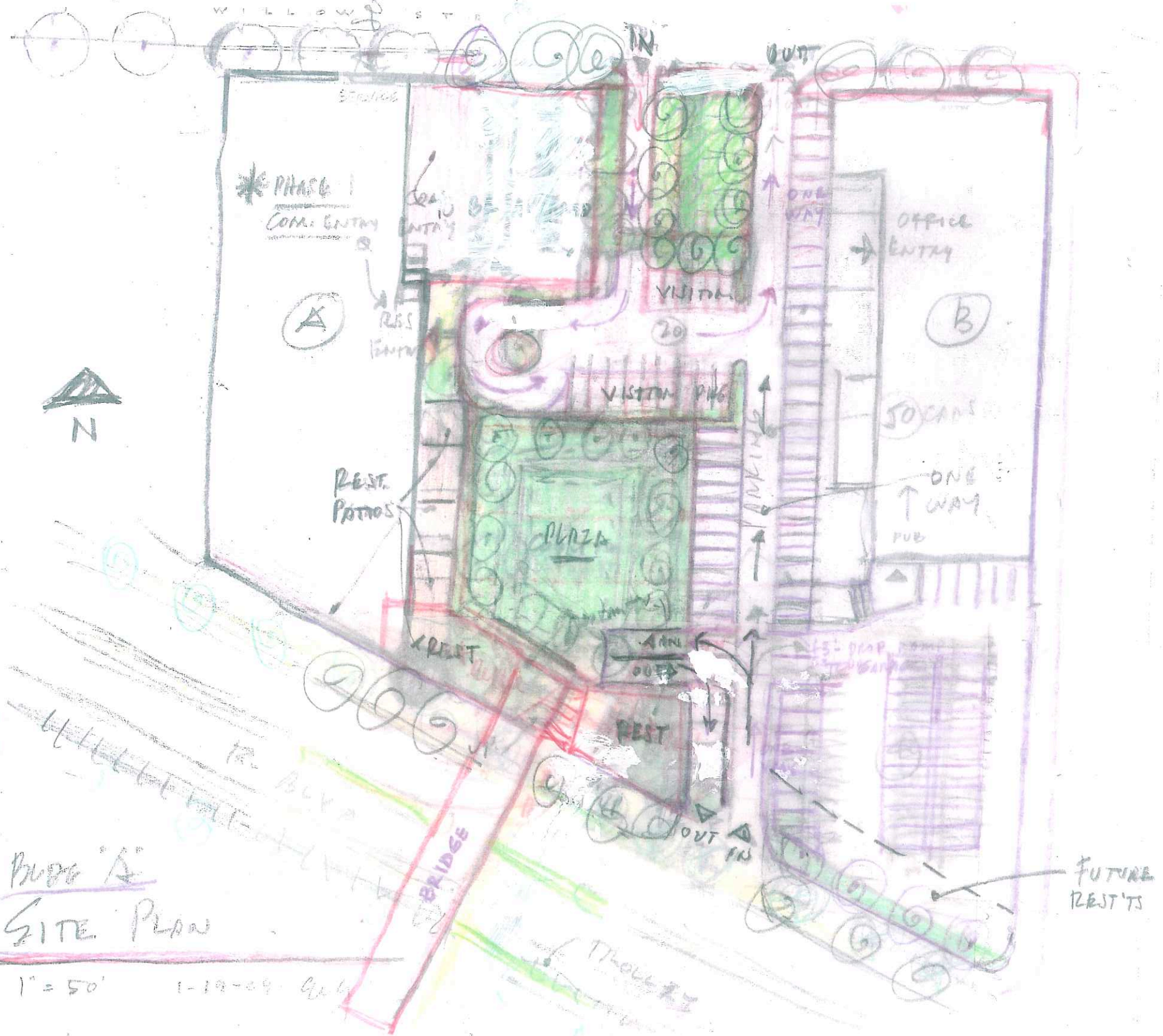
WILLOW STREET (NORTH) ELEVATION



BUILDING (WEST) ELEVATION

PARKING:

±200 (6100) + ±110 (1100)



Phase 1
SITE PLAN

1" = 50' 1-19-09 G.W.G.

RIVER VIEW AT READING

REV. 3/18/09 G.W.G.