



# FOR LEASE

## Historic Occidental Property

This Historic Building is conveniently located within walking distance of the Sedgwick County Courthouse, City Hall, Epic Center, financial institutions, restaurants, and Century II Performing Arts & Convention Center, making this a perfect location for your business.

Renovated in 1980, the Occidental Property still mirrors its original appearance both on the exterior and interior, yet provides functional and stylish office spaces for lease.



### **Location:**

300 N. Main St.

Wichita, KS 67212

### **Space Available:**

Suite 100- 3,200 SF

Suite 104- 1,675 SF

Suite 201- 1,633 SF

Suite 202- 1,719 SF

Suite 204- 3,226 SF

Suite 300- 3,229 SF

Suite 306- 1,215 SF

### **Lease Rate:**

Negotiable

+ Full Service Lease

### **Parking:**

36 Spaces for Onsite  
Parking

CHAD STAFFORD

8111 E. 32nd St. N.

Suite 101

Wichita, KS 67226

[chad@occmgmt.com](mailto:chad@occmgmt.com)

[www.occmgmt.com](http://www.occmgmt.com)

T: 316-262-3331

C: 720-289-5824

@occmgmt



## Historic Occidental Property

The Historic Occidental Hotel was built in 1873-1874, which plays in part of the buildings significance in that it is the only remaining building of the “Cowntown” era and the only documents building still standing today from the City’s incorporation in 1870 to 1850.



### Location:

300 N. Main St.  
Wichita, KS 67212

### Space Available:

Suite 100- 3,200 SF  
Suite 104- 1,675 SF  
Suite 201- 1,633 SF  
Suite 202- 1,719 SF  
Suite 204- 3,226 SF  
Suite 300- 3,229 SF  
Suite 306- 1,215 SF

### Lease Rate:

Negotiable  
+ Full Service Lease

### Parking:

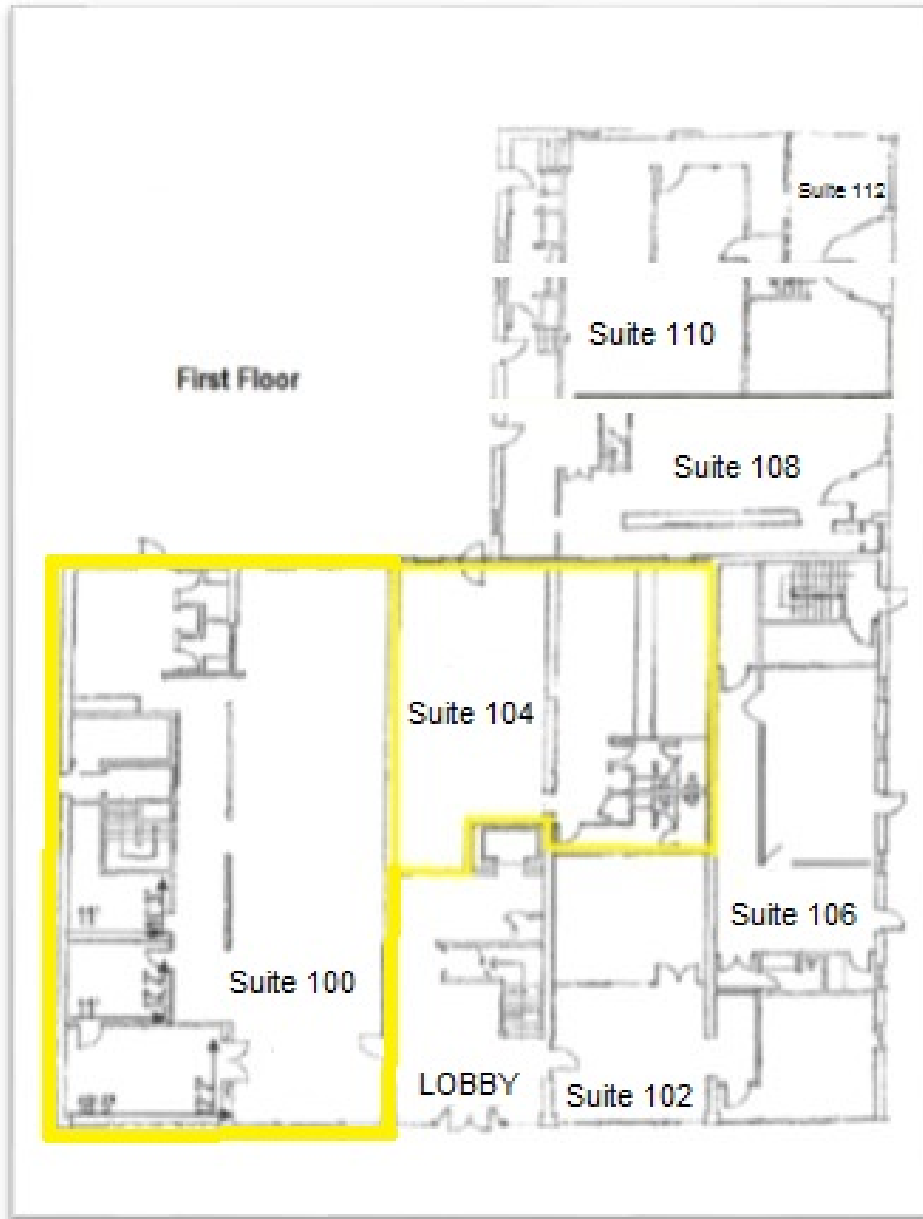
36 Spaces for Onsite  
Parking

CHAD STAFFORD  
8111 E. 32nd St. N.  
Suite 101  
Wichita, KS 67226

[chad@occmgmt.com](mailto:chad@occmgmt.com)

[www.occmgmt.com](http://www.occmgmt.com)

T: 316-262-3331  
C: 720-289-5824  
@occmgmt



## Historic Occidental Property

Frist Floor

Suite 100- 3,200 SF

Suite 104- 1,675 SF (Formally Restaurant)

CHAD STAFFORD

[chad@occmgmt.com](mailto:chad@occmgmt.com)

[www.occmgmt.com](http://www.occmgmt.com)

@occmgmt





**Historic Occidental Property**  
Frist Floor-Suite 100- 3,200 SF



CHAD STAFFORD

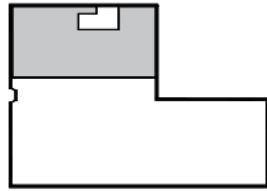
[chad@occmgmt.com](mailto:chad@occmgmt.com)

[www.occmgmt.com](http://www.occmgmt.com)

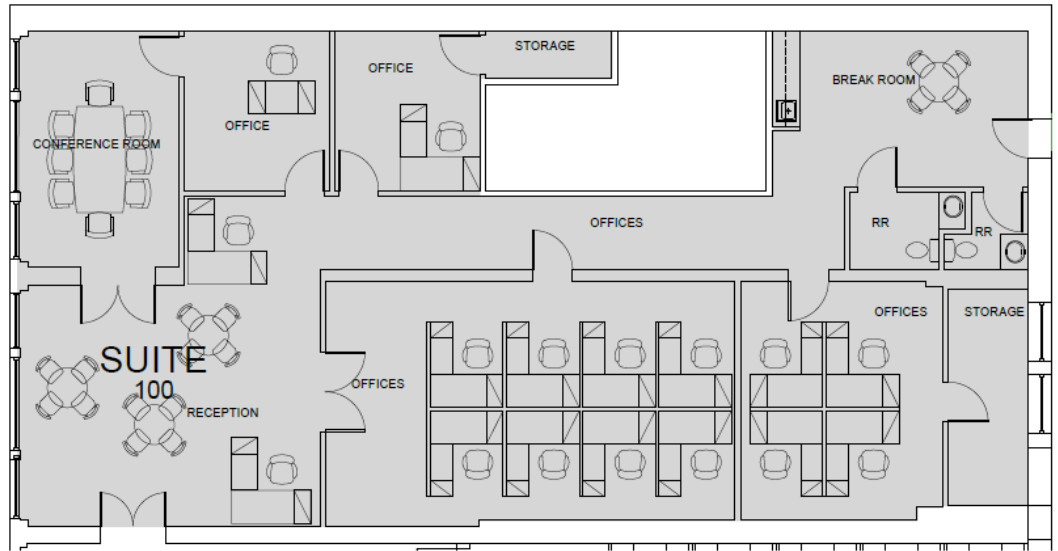
@occmgmt



8111 E 32nd St. N Suite 101  
Wichita, KS 67226 316 262 3111



**KEY PLAN**



**SUITE 100 FLOOR PLAN**  
0 4



**SPANGENBERG PHILLIPS TICE**  
ARCHITECTURE  
316.267.4002 sptarchitecture.com

**OCCIDENTAL PLAZA**  
300 N MAIN WICHITA, Ks

This drawing is conceptual in nature subject to change.  
The developer reserves the right to modify all aspects of the plans.

25 OCT 17

**Historic Occidental Property**

Frist Floor-Suite 100- 3,200 SF

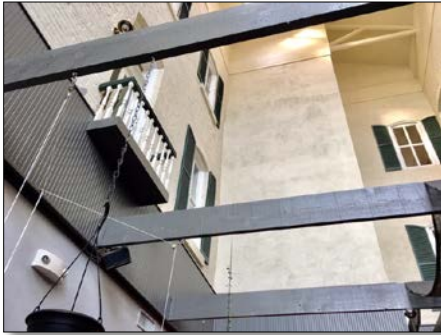
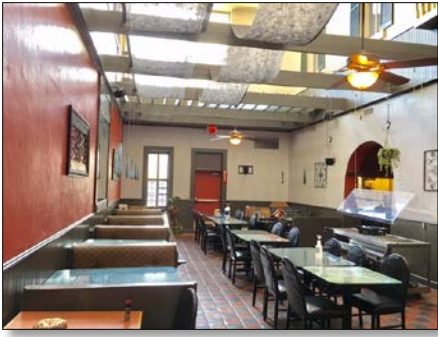
CHAD STAFFORD

[chad@occmgmt.com](mailto:chad@occmgmt.com)

[www.occmgmt.com](http://www.occmgmt.com)

@occmgmt





## Historic Occidental Property

Frist Floor- Suite 104- 1,675 SF (Formally Restaurant)



CHAD STAFFORD

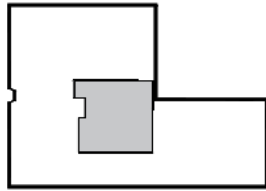
[chad@occmgmt.com](mailto:chad@occmgmt.com)

[www.occmgmt.com](http://www.occmgmt.com)

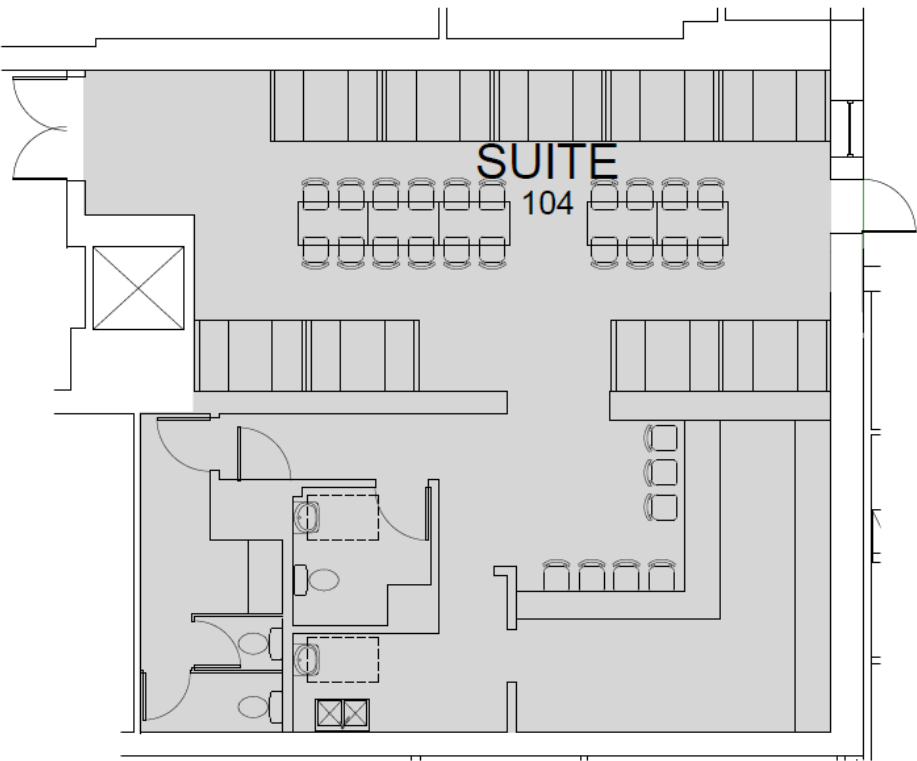
@occmgmt




8111 E 32nd St. N Suite 101  
Wichita, KS 67226 316 262 3111



 **KEY PLAN**



 **SUITE 104 FLOOR PLAN**



**SPANGENBERG PHILLIPS TICE**  
ARCHITECTURE  
316.267.4002 [sptarchitecture.com](http://sptarchitecture.com)

**OCCIDENTAL PLAZA**  
300 N MAIN WICHITA, Ks.

This drawing is conceptual in nature subject to change.  
The developer reserves the right to modify all aspects of the plans.

25 OCT 17

## Historic Occidental Property

Frist Floor-Suite 104- 1,675 SF (Formally Restaurant)

CHAD STAFFORD

[chad@occmgmt.com](mailto:chad@occmgmt.com)

[www.occmgmt.com](http://www.occmgmt.com)

@occmgmt





## Historic Occidental Property

Second Floor

Suite 201- 1,633 SF

Suite 202- 1,719 SF

Suite 204- 3,226 SF

CHAD STAFFORD

[chad@occmgmt.com](mailto:chad@occmgmt.com)

[www.occmgmt.com](http://www.occmgmt.com)

@occmgmt





## Historic Occidental Property

Second Floor- Suite 201 – 1,633 SF



CHAD STAFFORD

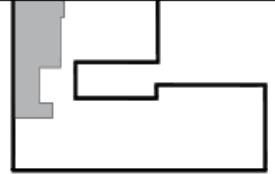
[chad@occmgmt.com](mailto:chad@occmgmt.com)

[www.occmgmt.com](http://www.occmgmt.com)

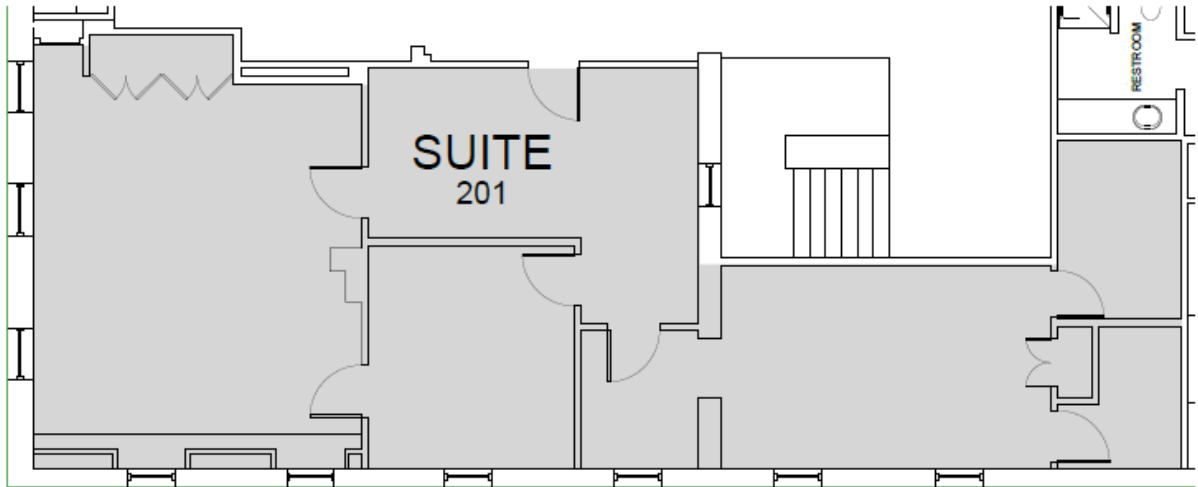
@occmgmt



8111 E 32nd St. N Suite 101  
Wichita, KS 67226 316 262 3111



**KEY PLAN**



**SUITE 201 FLOOR PLAN**  
1/8"=1'-0"



**SPANGENBERG PHILLIPS TICE**  
ARCHITECTURE  
316.267.4002 [sptarchitecture.com](http://sptarchitecture.com)

**OCCIDENTAL PLAZA**  
300 N MAIN WICHITA, KS

This drawing is conceptual in nature subject to change.  
The developer reserves the right to modify all aspects of the plans.

25 OCT 17

### Historic Occidental Property

Second Floor-Suite 201- 1,719 SF



CHAD STAFFORD

[chad@occmgmt.com](mailto:chad@occmgmt.com)

[www.occmgmt.com](http://www.occmgmt.com)

@occmgmt



## Historic Occidental Property

Second Floor- Suite 202- 1,719 SF



CHAD STAFFORD

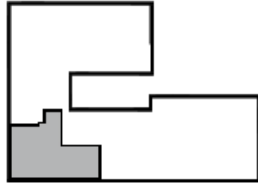
[chad@occmgmt.com](mailto:chad@occmgmt.com)

[www.occmgmt.com](http://www.occmgmt.com)

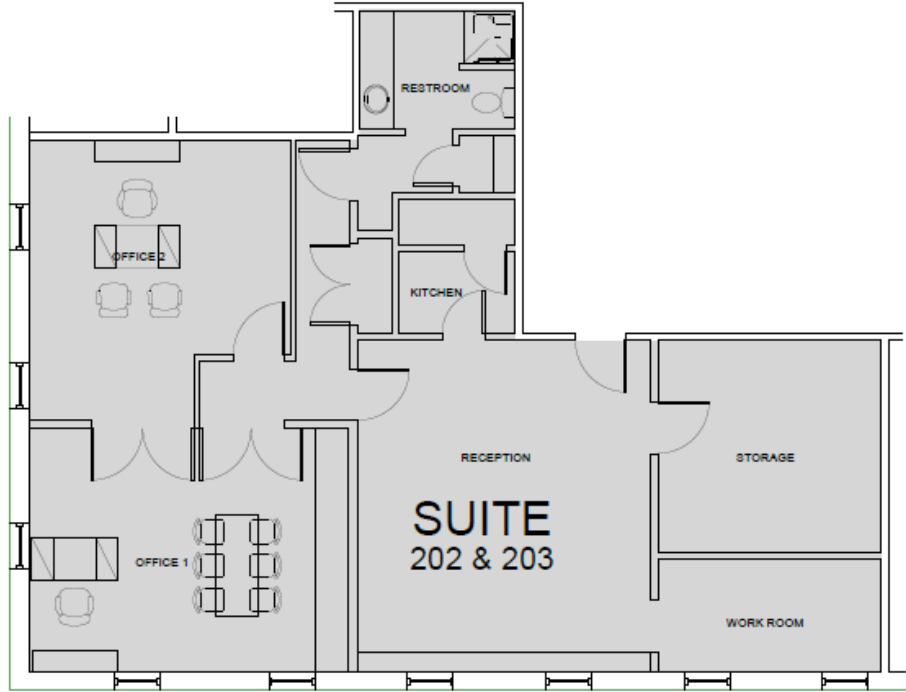
@occmgmt




8111 E 32nd St. N Suite 101  
Wichita, KS 67226 316 262 3111



 **KEY PLAN**



 **SUITE 202 & 203 FLOOR PLAN**  
1/4"=1'-0"



**SPANGENBERG PHILLIPS TICE**  
ARCHITECTURE  
316.267.4002 [sptarchitecture.com](http://sptarchitecture.com)

**OCCIDENTAL PLAZA**  
300 N MAIN WICHITA, KS.

This drawing is conceptual in nature subject to change.  
The developer reserves the right to modify all aspects of the plans.

25 OCT 17

## Historic Occidental Property

Second Floor-Suite 202- 1,719 SF



CHAD STAFFORD

[chad@occmgmt.com](mailto:chad@occmgmt.com)

[www.occmgmt.com](http://www.occmgmt.com)

@occmgmt



**Historic Occidental Property**  
Second Floor- 204- 3,226 SF



CHAD STAFFORD

[chad@occmgmt.com](mailto:chad@occmgmt.com)

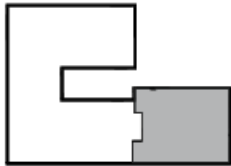
[www.occmgmt.com](http://www.occmgmt.com)

@occmgmt

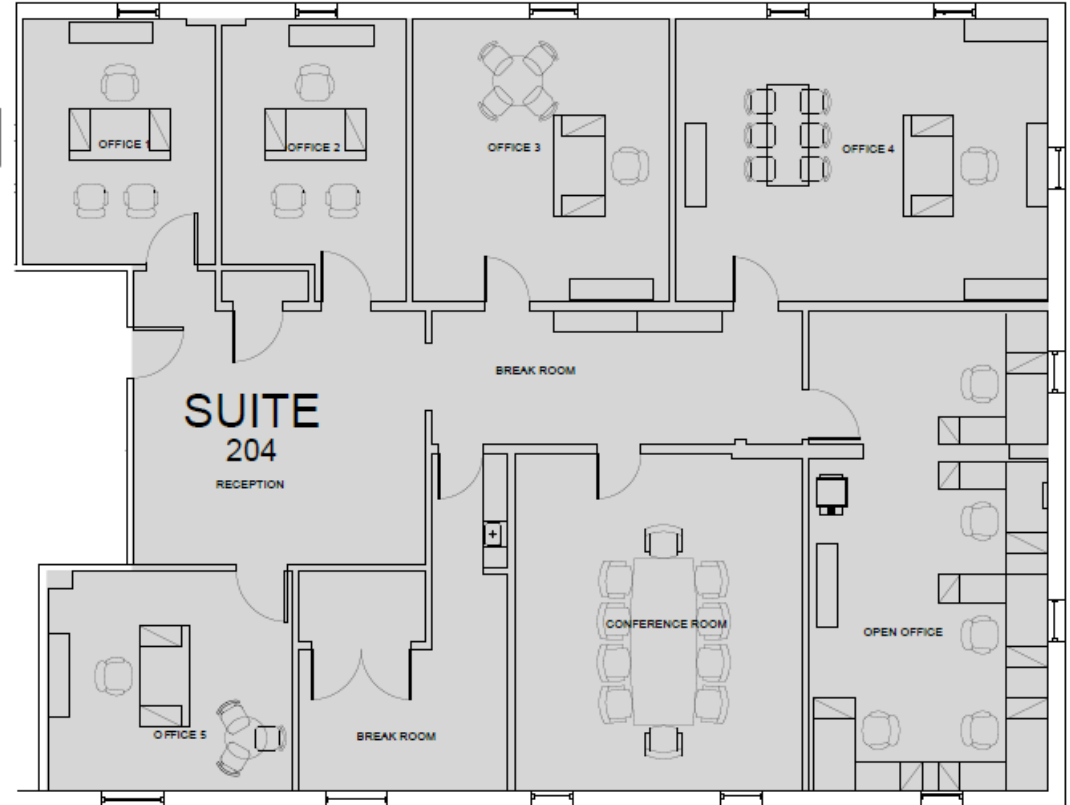



**Occidental**  
MANAGEMENT  
Where Ideas Take Flight  
REAL ESTATE DEVELOPMENT

8111 E 32nd St. N Suite 101  
Wichita, KS 67226 316 262 3111



 **KEY PLAN**



 **SUITE 204 FLOOR PLAN**

1/8" = 1'-0"



**SPANGENBERG PHILLIPS TICE**  
ARCHITECTURE  
316.267.4002 sptarchitecture.com

**OCCIDENTAL PLAZA**  
300 N MAIN WICHITA, KS.

This drawing is conceptual in nature subject to change.  
The developer reserves the right to modify all aspects of the plans.

25 OCT 17

## Historic Occidental Property

Second Floor-Suite 204- 3,226 SF



**Occidental**  
MANAGEMENT

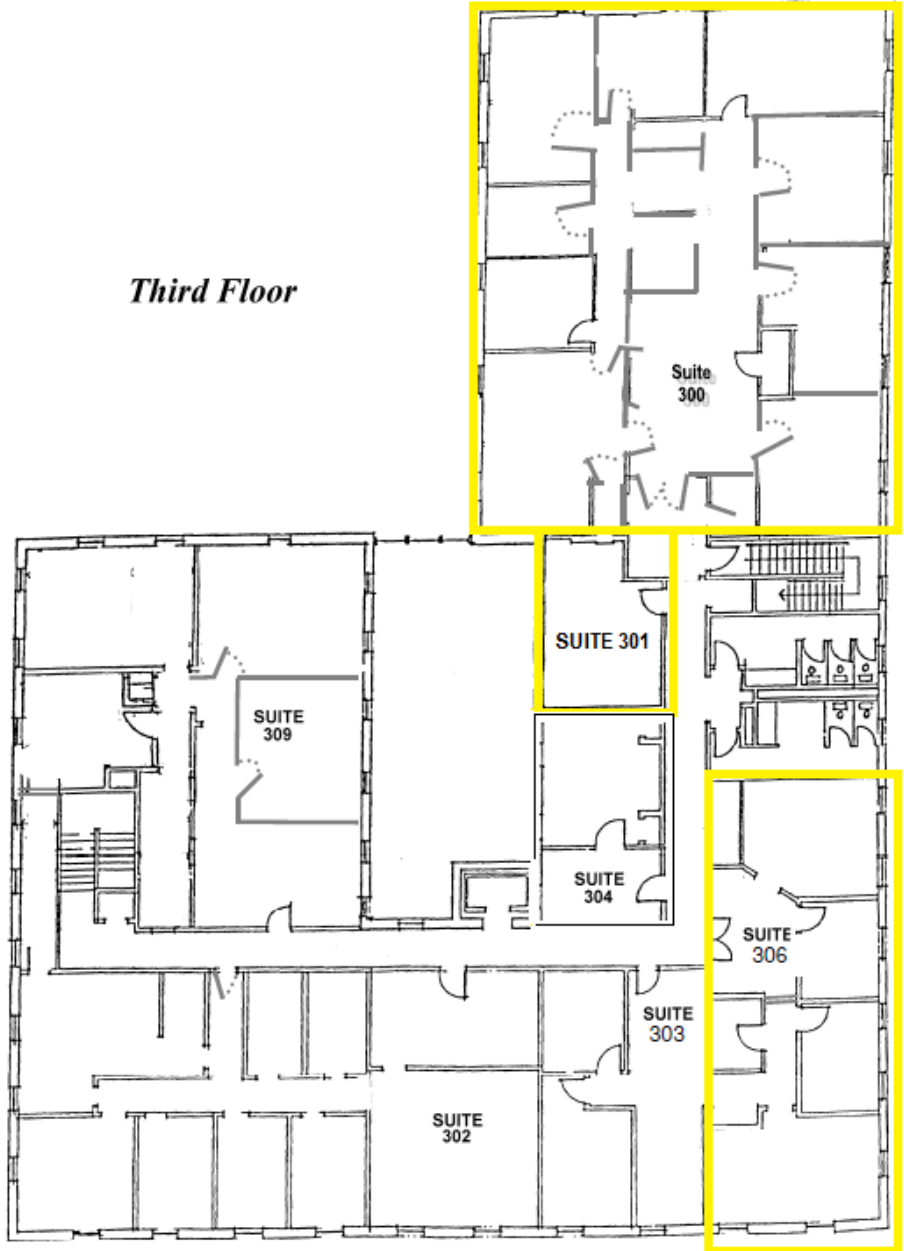
CHAD STAFFORD

[chad@occmgmt.com](mailto:chad@occmgmt.com)

[www.occmgmt.com](http://www.occmgmt.com)

@occmgmt

*Third Floor*



**Historic Occidental Property**

Third Floor

Suite 300- 3,229 SF

Suite 301- 1,215 SF

Suite 306- 1,215 SF

CHAD STAFFORD

[chad@occmgmt.com](mailto:chad@occmgmt.com)

[www.occmgmt.com](http://www.occmgmt.com)

@occmgmt





## Historic Occidental Property

Third Floor- Suite 300- 3,229 SF



CHAD STAFFORD

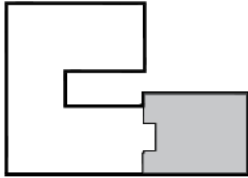
[chad@occmgmt.com](mailto:chad@occmgmt.com)

[www.occmgmt.com](http://www.occmgmt.com)

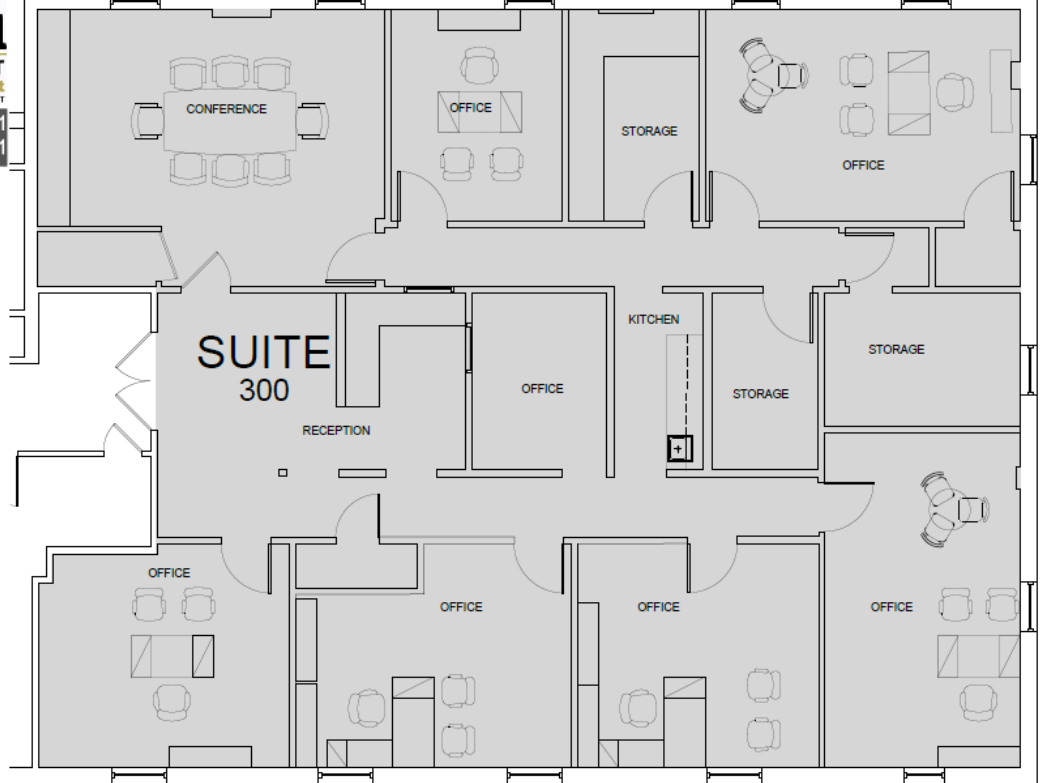
@occmgmt



8111 E 32nd St. N Suite 101  
Wichita, KS 67226 316 262 3111



**KEY PLAN**



**SUITE 300 FLOOR PLAN**  
1/8"=1'-0"



**SPANGENBERG PHILLIPS TICE**  
ARCHITECTURE  
316.267.4002 sptarchitecture.com

**OCCIDENTAL PLAZA**  
300 N MAIN WICHITA, Ks.

This drawing is conceptual in nature subject to change.  
The developer reserves the right to modify all aspects of the plans.

25 OCT 17

### Historic Occidental Property

Third Floor-Suite 300- 3,229 SF

CHAD STAFFORD


[chad@occmgmt.com](mailto:chad@occmgmt.com)

[www.occmgmt.com](http://www.occmgmt.com)

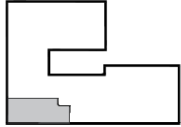
@occmgmt

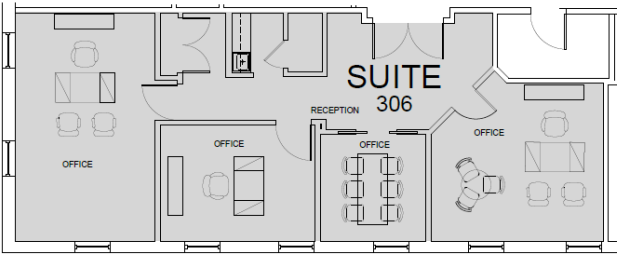





 **Occidental**  
MANAGEMENT  
*Where Ideas Take Flight*  
REAL ESTATE DEVELOPMENT

8111 E 32nd St. N Suite 101  
Wichita, KS 67226 316 262 3111

 **KEY PLAN**

 **SUITE 306 FLOOR PLAN**

 **SPANGENBERG PHILLIPS TICE** **OCCIDENTAL PLAZA**  
ARCHITECTURE 300 N MAIN WICHITA, KS  
316.267.4002 sptarchitecture.com

This drawing is conceptual in nature subject to change.  
The developer reserves the right to modify all aspects of the plans.

25 OCT 17

## Historic Occidental Property

Third Floor- Suite 306- 1,215 SF

CHAD STAFFORD

[chad@occmgmt.com](mailto:chad@occmgmt.com)

[www.occmgmt.com](http://www.occmgmt.com)

@occmgmt

