

Mobile: 601.466.6428  
hendersonbert7@gmail  
www.4cplandandhomes



Call Bert Henderson  
Office: 601.340.3457

## 7833 Hwy 184E, Waynesboro

*Commercial Building on Hwy 84*

**\$195,000**



- 2800 Sq. Ft.
- Insulated metal building
- Open floor plan
- 2.58 acres
- Frontage on Hwy 84
- 2.6 Miles from Waynesboro

This commercial building sits on 2.58 acres fronting Hwy 84. It has plenty of space and would be perfect for many different commercial applications.



**Bert Henderson**  
Realtor/Land Specialist  
4 Corner Properties, LLC  
3239 Old Bay Springs Rd  
Laurel, MS 39440

NW 1/4 of SE 1/4 of Section 29, T9N,  
R6W, Wayne Co., Mississippi



**Bert Henderson**  
**4 Corner Properties, LLC**  
**601.466.6428**  
**[hendersonbert7@gmail.com](mailto:hendersonbert7@gmail.com)**  
**[www.4cornerprop.com](http://www.4cornerprop.com)**





**Bert Henderson**  
**4 Corner Properties, LLC**  
**601.466.6428**  
**[www.4cornerprop.com](http://www.4cornerprop.com)**





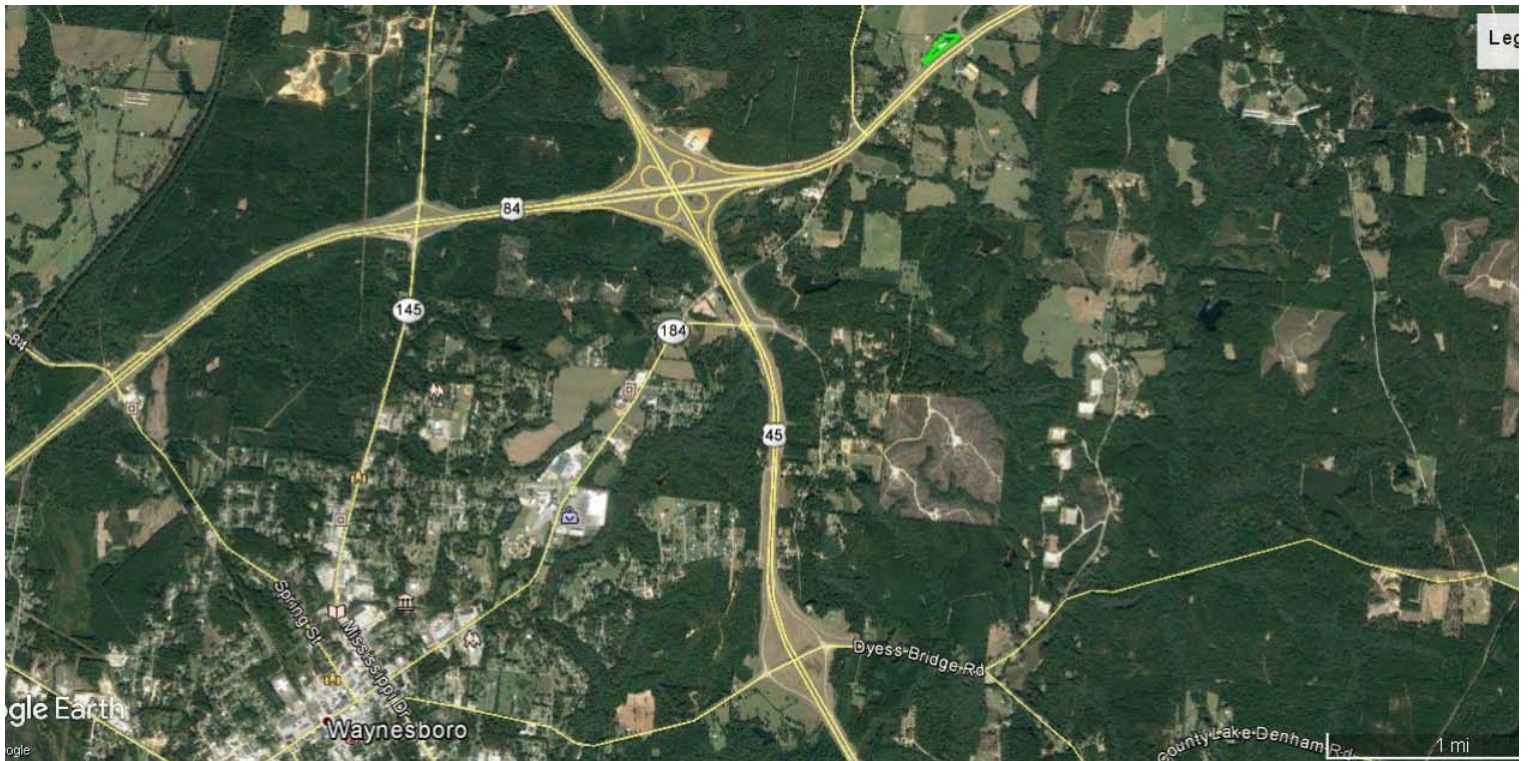
**Bert Henderson**  
**4 Corner Properties, LLC**  
**3239 Old Bay Springs RD**  
**Laurel, MS 39440**  
**[www.4cornerprop.com](http://www.4cornerprop.com)**





**Bert Henderson**  
**4 Corner Properties, LLC**  
**601.466.6428**  
**[www.4cornerprop.com](http://www.4cornerprop.com)**





**Bert Henderson**  
**4 Corner Properties, LLC**  
**601.466.6428**  
**[www.4cornerprop.com](http://www.4cornerprop.com)**

