



# 150 | CORDAVILLE ROAD SOUTHBOROUGH, MA

## CLASS A FLEX/R&D

### 4,905 SF FOR LEASE

Avison Young is pleased to announce a 4,905 SF availability at 150 Cordaville Road in Southborough, Massachusetts. 150 Cordaville is a 42,500 SF flex/R&D property located on the corner of Route 9 and Route 85 and only minutes from I-495 and the MassPike. Owned and managed by Capital Group Properties, 150 Cordaville is ideal for companies that need warehouse and office space.



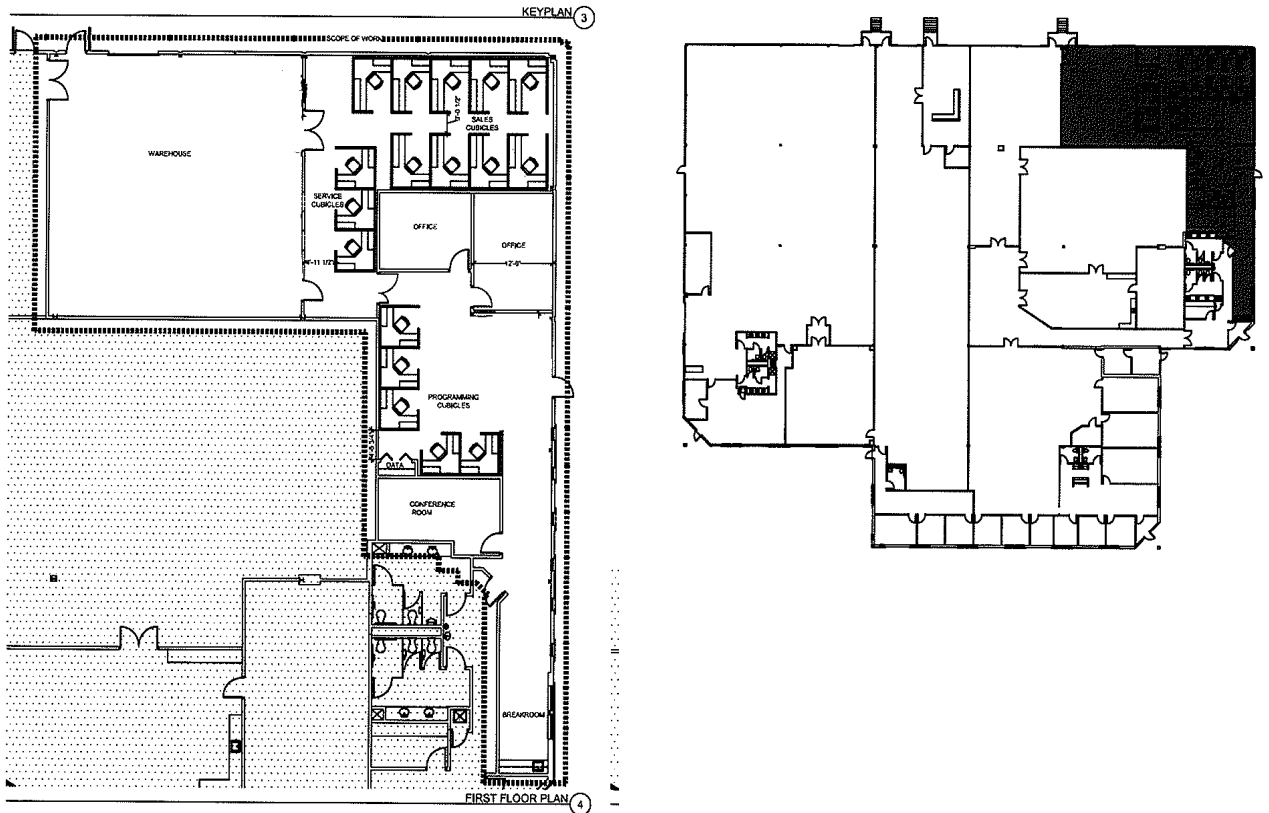
FOR MORE INFORMATION OR TO  
SCHEDULE A TOUR, PLEASE CONTACT:

Jon Pezzoni  
617.758.8742  
jon.pezzoni@avisonyoung.com

Bill Sullivan  
617.758.8276  
bill.sullivan@avisonyoung.com

# 150 | CORDAVILLE ROAD SOUTHBOROUGH, MA

## FLOOR PLAN



## BUILDING INFORMATION

|                  |   |
|------------------|---|
| RBA:             | 42,500 SF                                     |
| Year Built:      | 1980  |
| Available Space: | 4,905 SF                                      |
| Availability:    | 60-90 days                                    |
| Pricing:         | Negotiable                                    |
| Clear Height:    | 16'4"   |
| Columns:         | 40'w x 40'd                                   |
| Loading:         | 1 Tailboard Dock                              |
| Amenities:       | Southborough Town Center,<br>White's Crossing |



FOR MORE INFORMATION OR TO  
SCHEDULE A TOUR, PLEASE CONTACT:

Jon Pezzoni  
617.758.8742  
jon.pezzoni@avisonyoung.com

Bill Sullivan  
617.758.8276  
bill.sullivan@avisonyoung.com

**AVISON  
YOUNG**