

# LIN•RAY PROFESSIONAL SUITES

633 E RAY RD SUITE 101/103, GILBERT, AZ 85296



**ALEX AFFAS**  
Designated Broker  
(480) 516-2046  
alexaffas@gmail.com



**AFFIRE**  
FINANCE • INSURANCE • REAL ESTATE

# OFFERING SUMMARY

## For Sale:

Sale Price: \$1,469,650  
(\$325/SF)

## For Lease:

\$25.00/SF NNN

## Property Features:

- Continuous up to  $\pm$  4,522 Square Feet
- Multiple Entrances & Restrooms
- Frontage on Ray Road
- Building Signage Available
- Six (6) Covered Parking Spots
- Purchase Includes One (1) 10'x20' Storage Unit
- Zoning: CC - Community Commercial (Town of Gilbert)
- Professional Office and/or Medical User
- 4 Miles from Mercy Gilbert Medical Center
- APN: 304-44-897 & 304-44-899

# DEMOGRAPHICS



| POPULATION | MILES | AVG. HOUSEHOLD INCOME |
|------------|-------|-----------------------|
| 13,760     | 1     | \$121,319             |
| 123,297    | 3     | \$105,488             |
| 339,199    | 5     | \$102,250             |



# RAY RD FRONTAGE & FLOOR PLAN

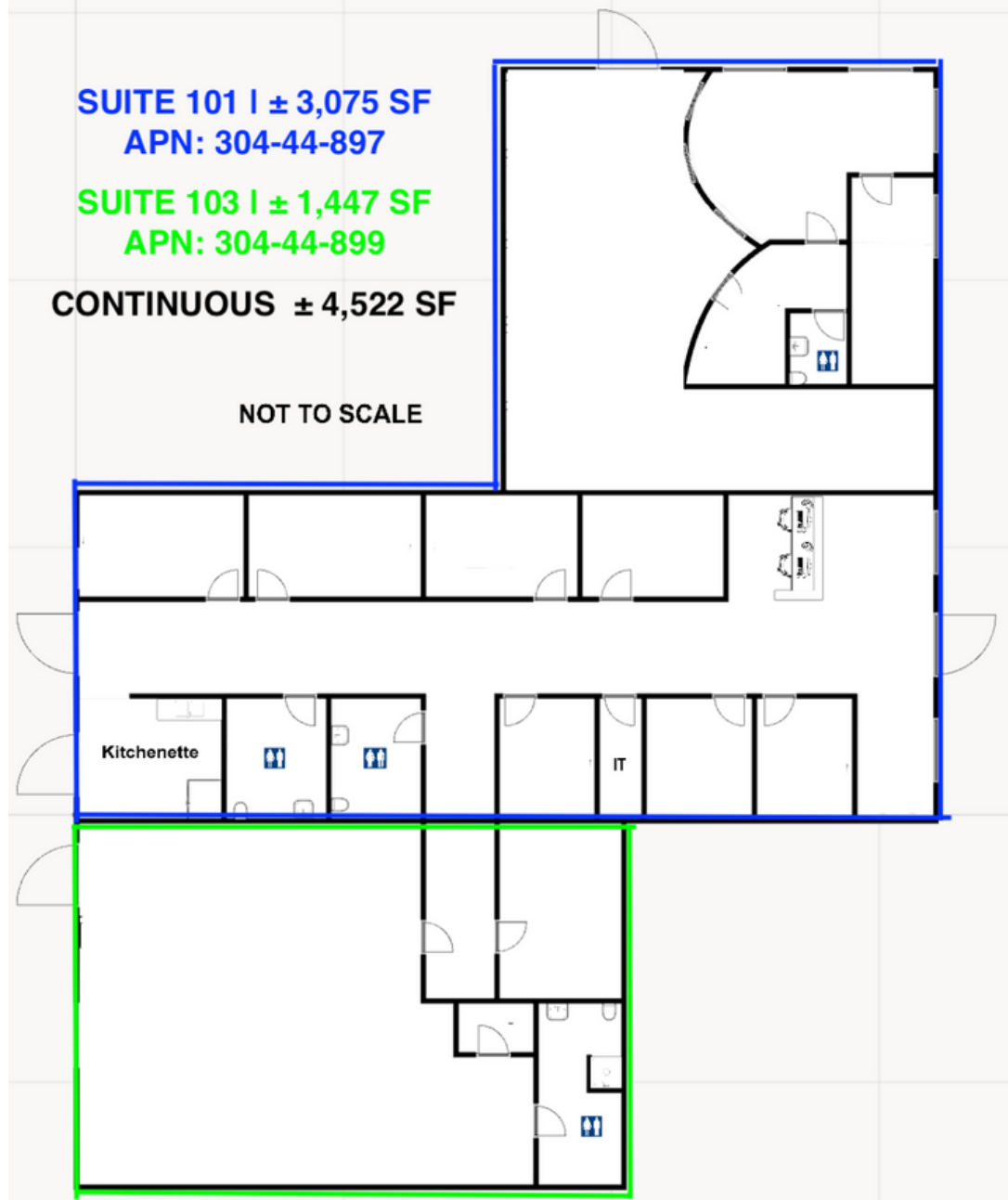


**SUITE 101 | ± 3,075 SF**  
**APN: 304-44-897**

**SUITE 103 | ± 1,447 SF**  
**APN: 304-44-899**

**CONTINUOUS ± 4,522 SF**

NOT TO SCALE



# SUITE 101 | INTERIOR PHOTOS



# SUITE 103 | INTERIOR PHOTOS



# ADDITIONAL PHOTOS

