

# FOR LEASE

LOCKPORT, IL  
DOWNTOWN DUNKIN DONUTS  
NEW DEVELOPMENT



4,395 SF RETAIL DEVELOPMENT

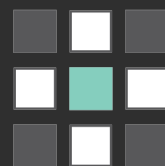
Opened 2018  
NE Corner of State & 8<sup>th</sup> St  
State Street: 14,400 Cars per Day  
Walking Distance to Lockport Metra  
Station

Join Dunkin in Downtown  
Lockport

**DUNKIN'**

**CONTACT:**

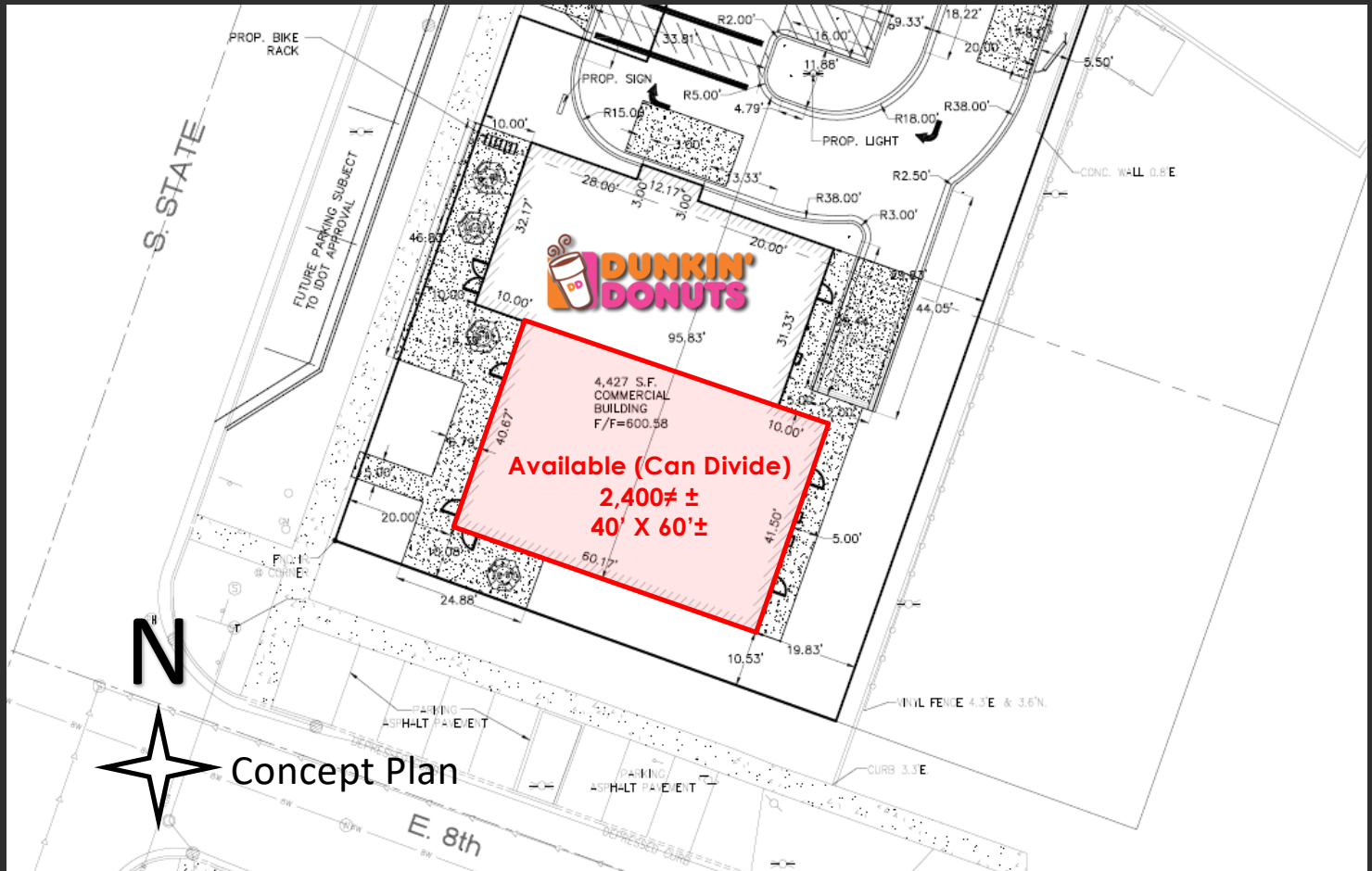
Trevor Paul  
(630) 432-1879  
trevorpaul@xsiterealestate.com



**XSITE**  
REAL ESTATE

# FOR LEASE

## LOCKPORT, IL DOWNTOWN DUNKIN DONUTS NEW DEVELOPMENT



4,395 SF RETAIL DEVELOPMENT

1 Mile Pop: 7,571

5 Mile Pop: 149,713

3 Mile Pop: 38,997

10 Min Drive: 54,786

CONTACT:

Trevor Paul

(630) 432-1879

trevorpaul@xsiterealestate.com



**XSITE**  
REAL ESTATE