

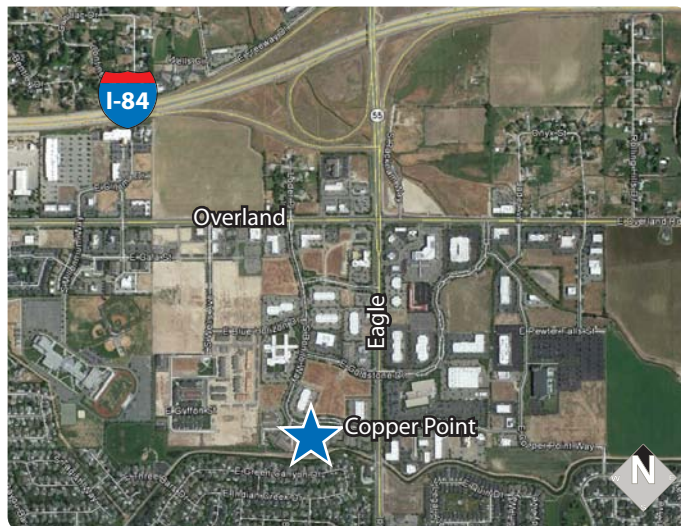
Experience Results.



CONTACT:

Holly Chetwood
 Ph: 208.947.0827
 holly@tokcommercial.com

PLEASE DO NOT DISTURB TENANT
 CONTACT AGENT FOR SHOWING
 24 Hour Notice



OFFICE CONDO FOR LEASE 2971 COPPERPOINT

Meridian, Idaho 83642

PROPERTY INFORMATION:

Submarket:	S. Meridian	Lease Term:	3-7 years
Bldg Type:	Office	Lease Type:	Modified Gross
Bldg Size:	3,367 SF	Available:	Now
# of Floors:	1		
Year Built:	2007		
Parking:	5:1,000		

AVAILABLE SPACE:

SPACE:	RSF:	RATE:
Suite 125	930 SF	\$18.50/SF

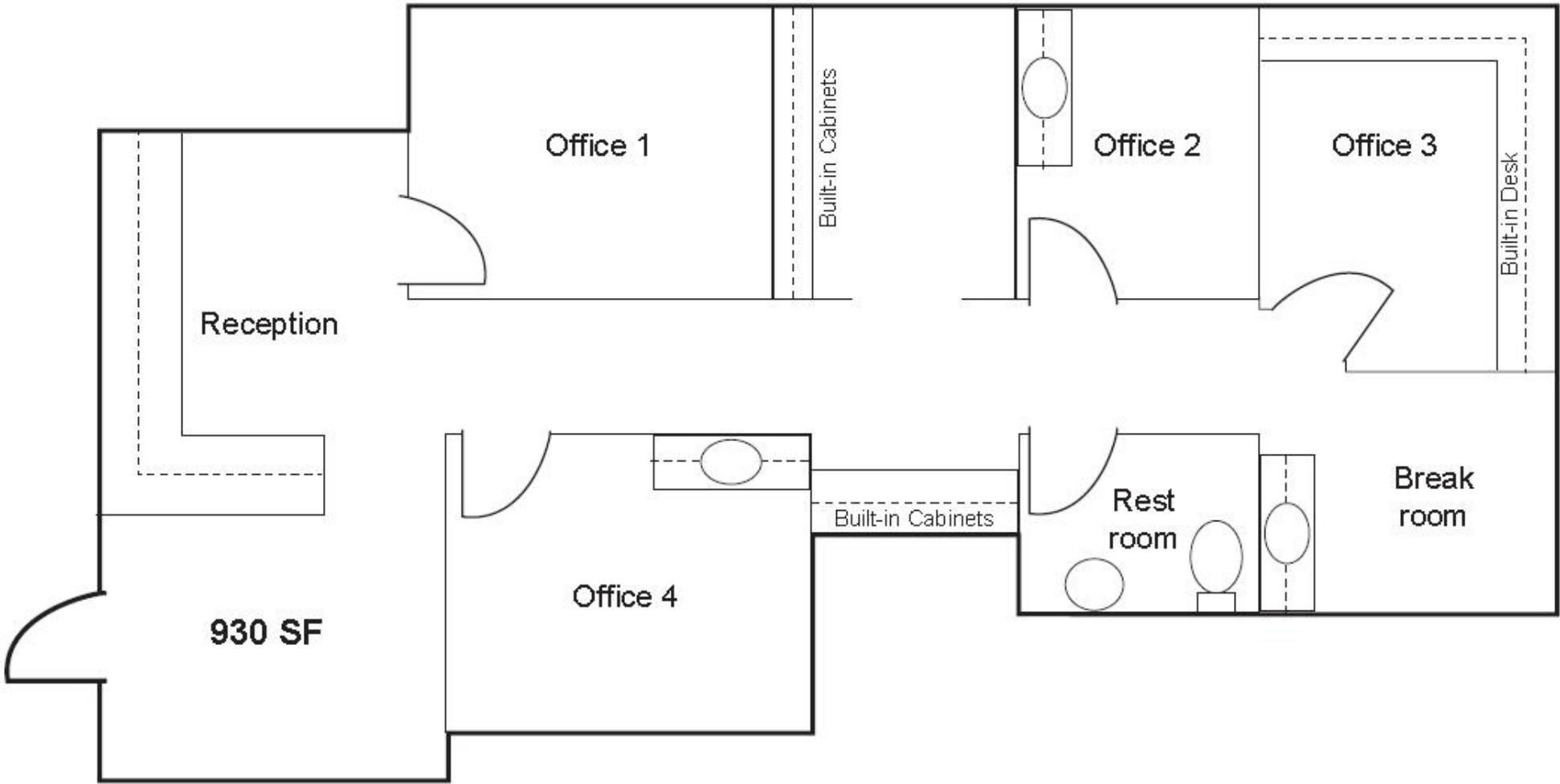
LISTING COMMENTS:

- Rare South Meridian Office Opportunity.
- Modified gross lease. - tenant pays utilities directly to service providers
- Great for medical, salon/spa, or office user.
- Beautifully built-out and well lit.
- Excellent location - central to the Boise Valley.
- Located in El Dorado Business Campus - Eagle & Overland Roads.
- Fiber optics available to the building.
- Quick access to I-84.

OFFICE CONDO FOR LEASE 2971 COPPERPOINT

Meridian, Idaho 83642

CONDO FLOOR PLAN



This information was obtained from sources believed reliable but cannot be guaranteed. Any opinions or estimates are used for example only.

OFFICE CONDO FOR LEASE 2971 COPPERPOINT

Meridian, Idaho 83642



This information was obtained from sources believed reliable but cannot be guaranteed. Any opinions or estimates are used for example only.

