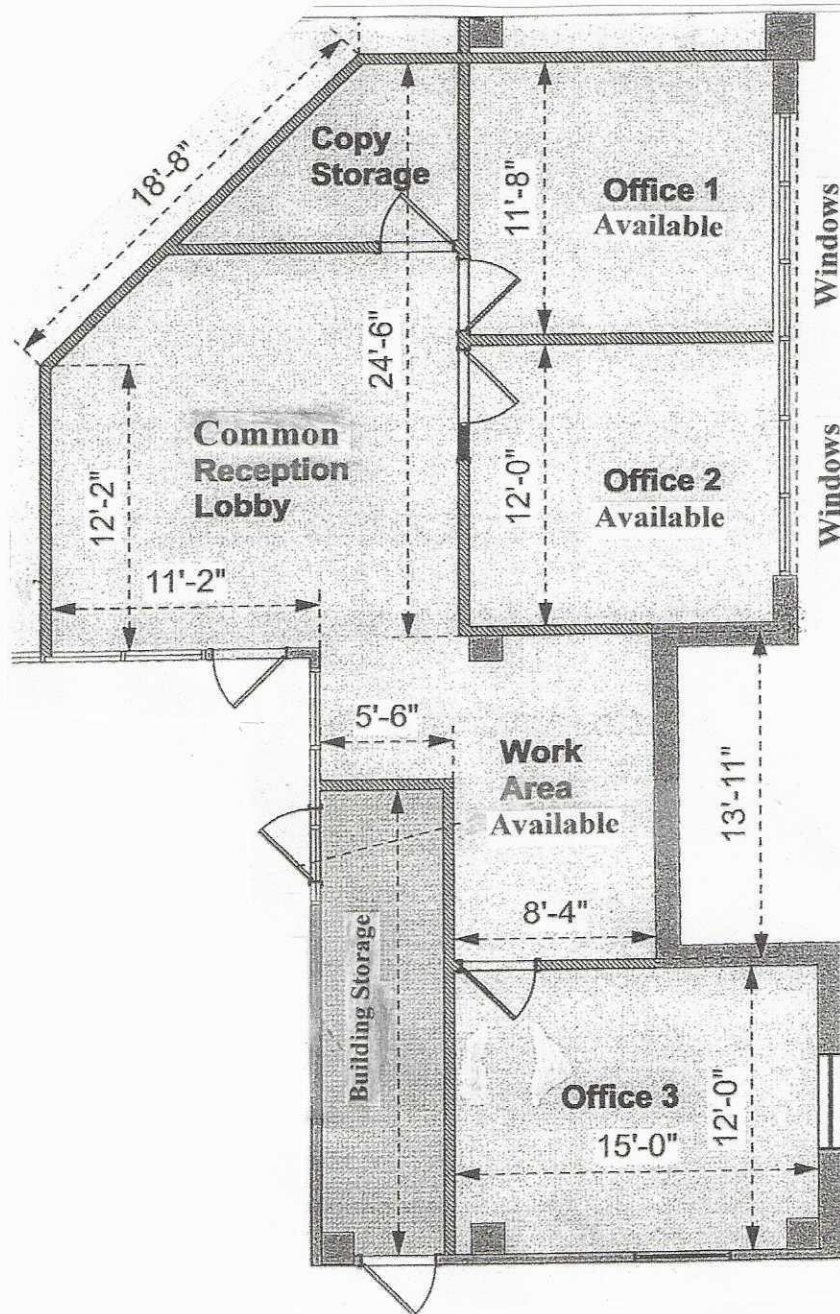


201 STEELE STREET IN HEART OF CHERRY CREEK SUITE #390



Professional office space for sublease available immediately. Flexible lease term through September 2028. Formerly law firm space. Two private offices with large windows. Reception and space for other employees.

Free covered tenant and visitor parking

Contact: Neil Macey, Denver Equities 303-389-0000 or neilmacey@msn.com