

For Lease // 330 8th Street, San Francisco, CA

# STAND ALONE HARD CORNER INDUSTRIAL BUILDING



**ZACH HAUPERT** zhaupert@tcpre.com  
D 415.539.1121 | C 415.812.1219

**MICHAEL SANBERG** msanberg@tcpre.com  
D 415.539.1103 | C 415.697.6088

**TREVOR GUDIM** trevor@tcpre.com  
D 415.539.1122 | C 858.922.2632

# 330 8TH STREET

## PROPERTY SUMMARY

### ADDRESS

330 8th Street, San Francisco, CA 94103

### AVAILABLE SPACE

3rd Floor +/- 7,496 Square Feet

2nd Floor +/- 7,496 Square Feet

Ground Floor +/- 7,496 Square Feet

**TOTAL +/- 22,488 Square Feet**

### RENTAL RATE

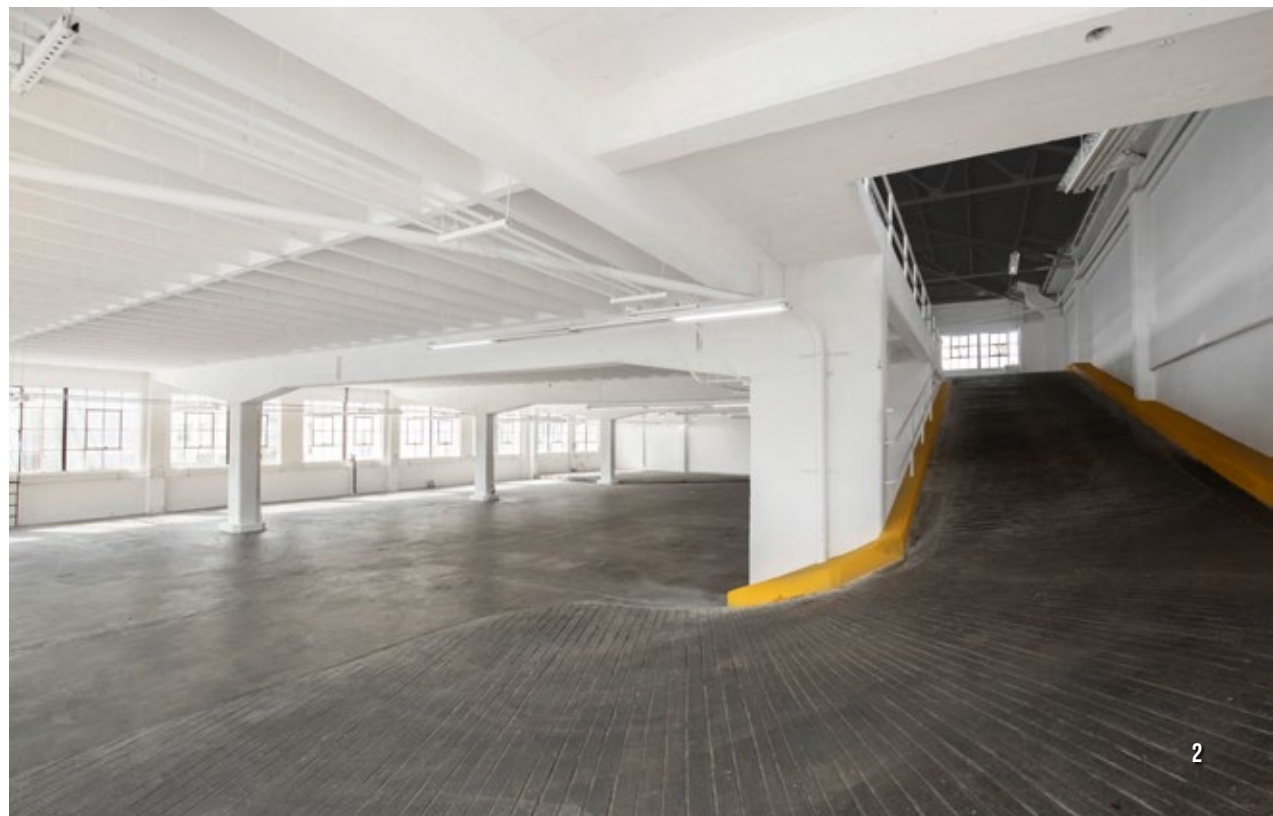
\$50,000 / Month, Industrial Gross

### AVAILABLE

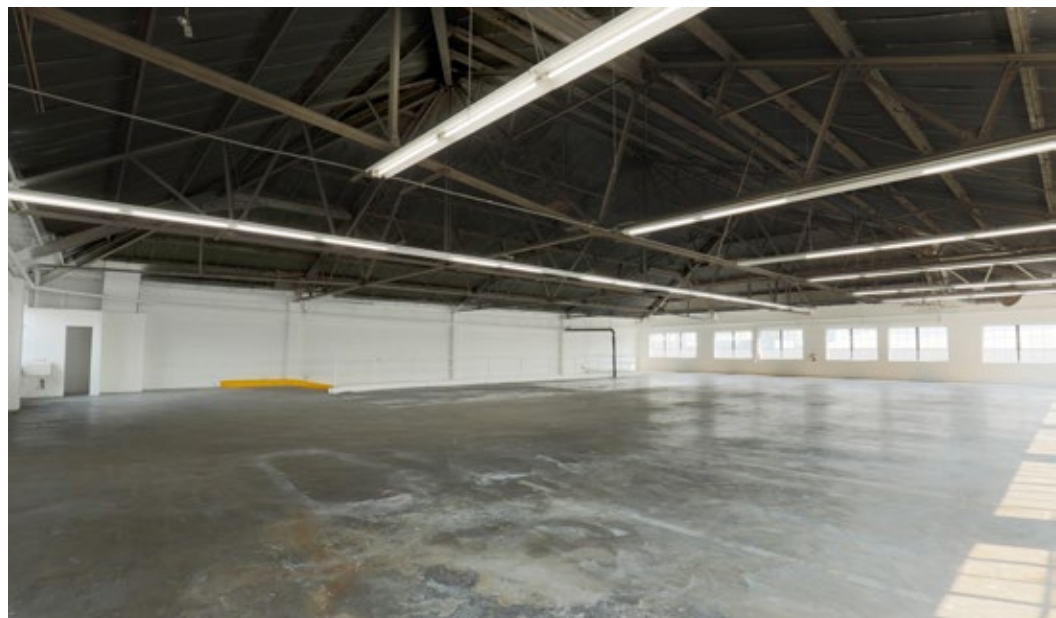
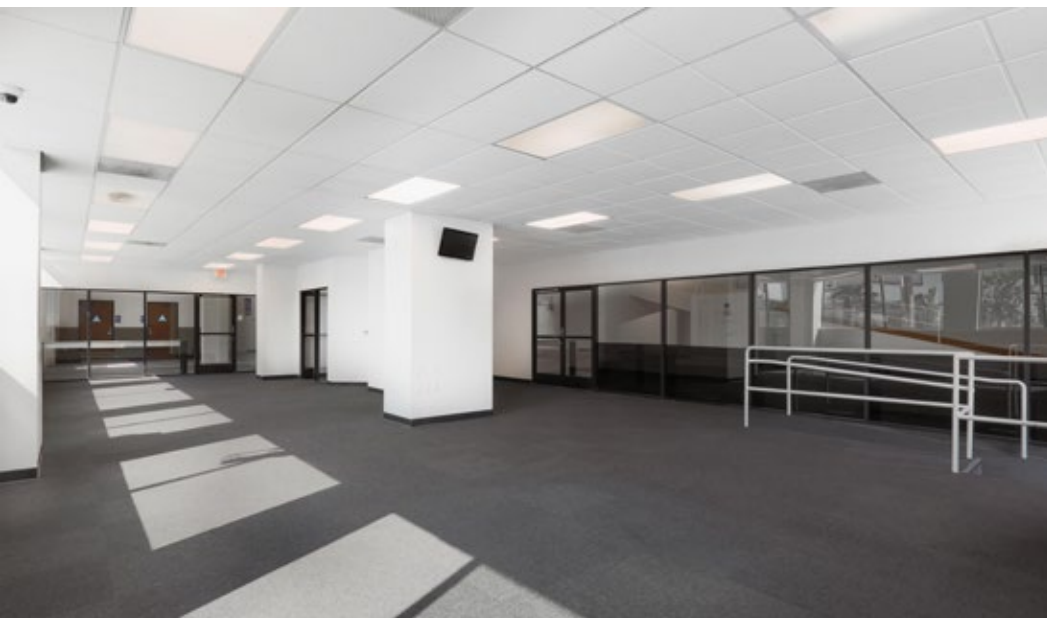
Immediately

## BUILDING ATTRIBUTES

- + 3-Phase 1000 Amp 480 Volt Electrical Service
- + Three (3) Large Drive-In Loading Doors
- + Drive-Up Ramp to 2nd and 3rd Floor
- + Approximately 1,750 SF of Office Space
- + Concrete Floors
- + ADA Restrooms
- + Car Wash Bay with Floor Drain
- + Hard Corner Building
- + Great Natural Light
- + Tenant Improvement Allowance Available



# 330 8TH STREET



**ZACH HAUPERT**  
415.539.1121 | zhaupert@tcpre.com

**MICHAEL SANBERG**  
415.539.1103 | msanberg@tcpre.com

**TREVOR GUDIM**  
415.539.1122 | trevor@tcpre.com

# 330 8TH STREET

## LOCATION OVERVIEW

Desirable South of Market location, walkable to nearby amenities and to surrounding neighborhoods.



**10 MIN** to Civic Center Bart  
**23 MIN** to 4th St Caltrain



**08 MIN** to Mission District  
**10 MIN** to Union Square  
**14 MIN** to Financial District



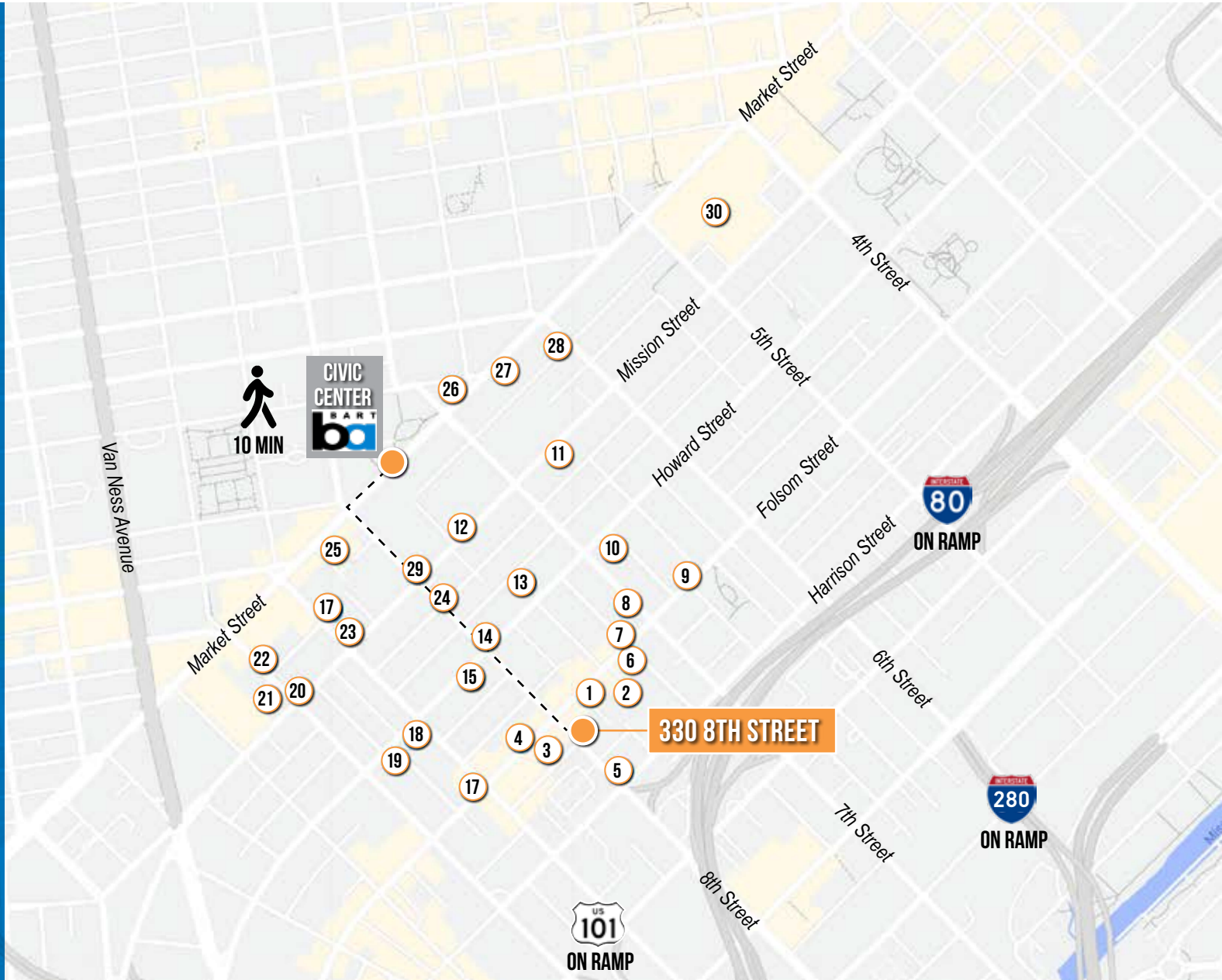
**04 MIN** to 101 On-Ramp  
**05 MIN** to 80 On-Ramp  
**07 MIN** to 280 On-Ramp



# 330 8TH STREET

## NEARBY AMENITIES

- 1..... Basil
- 2..... Iza Ramen
- 3..... Driftwood
- 4..... Test Coffee
- 5..... AK Subs
- 6..... Trademark & Copyright
- 7..... Terroir
- 8..... Sightglass Coffee
- 9..... Deli Board
- 10..... SF Champagne Society
- 11..... Saint Frank Coffee
- 12..... City Beer Store
- 13..... Cellarmaker Brewing Co.
- 14..... Harvest Urban Market
- 15..... Mike's Bikes SF
- 16..... Kama Sushi Soma
- 17..... Commissary
- 18..... Chantal Guillon Patisserie
- 19..... Tank18 Restaurant & Winery
- 20..... Cumaica Cafe
- 21..... Peet's Coffee
- 22..... Fitness SF
- 23..... Club 93
- 24..... Sizzling Pot King
- 25..... Starbucks
- 26..... Charmaine's Rooftop Bar
- 27..... The Flying Falafel
- 28..... Dottie's True Blue Café
- 29..... Focaccia Market Bakery
- 30..... Westfield SF Centre



# 330 8TH STREET



WESTFIELD SF CENTRE



SIGHTGLASS COFFEE



TRADEMARK & COPYRIGHT



CELLARMAKER BREWING CO.



CHANTAL GUILLON PATISSERIE

**330** 8TH  
STREET



**TCP**  
**TOUCHSTONE**  
COMMERCIAL PARTNERS

Corp. Lic. 01112906  
www.tcp.com

**ZACH HAUPERT**

D 415.539.1121 C 415.812.1219  
zhaupert@tcp.com DRE # 01822907

**MICHAEL SANBERG**

D 415.539.1103 C 415.697.6088  
msanberg@tcp.com DRE # 01930041

**TREVOR GUDIM**

D 415.539.1122 C 858.922.2632  
trevor@tcp.com DRE # 01979980

The information presented has been secured from sources we believe to be reliable but we make no representations or warranties, expressed or implied, as to the accuracy of the information. Lessee must verify the information and bears all risk for any inaccuracies.