



RHYS

DOWNTOWN GREENWICH OFFICE/RETAIL/MEDICAL SPACE

115 EAST PUTNAM AVENUE
GREENWICH / CT

115 EAST PUTNAM AVE

GREENWICH / CT



DOWNTOWN LOCATION SURROUNDED BY AMENITIES AND WITHIN CLOSE PROXIMITY TO GREENWICH AVENUE

CONTACT

Christian Bangert
Executive Vice President & Partner
203.653.1742 / cbangert@rhysre.com

Sam Chambers
Director
203.653.1736 / schambers@rhysre.com

Cory Gubner
President & CEO
203.653.1730 / cgubner@rhysre.com

FEATURES

- | Steps away from Greenwich Avenue with numerous shops and restaurants
- | Within one mile of the Greenwich Metro North Station
- | Private parking lot with approximately 120 surface spaces
- | Easily accessible from I-95 and The Merritt Parkway
- | Full building back-up generator
- | On-site ownership/property management

SPECIFICATIONS

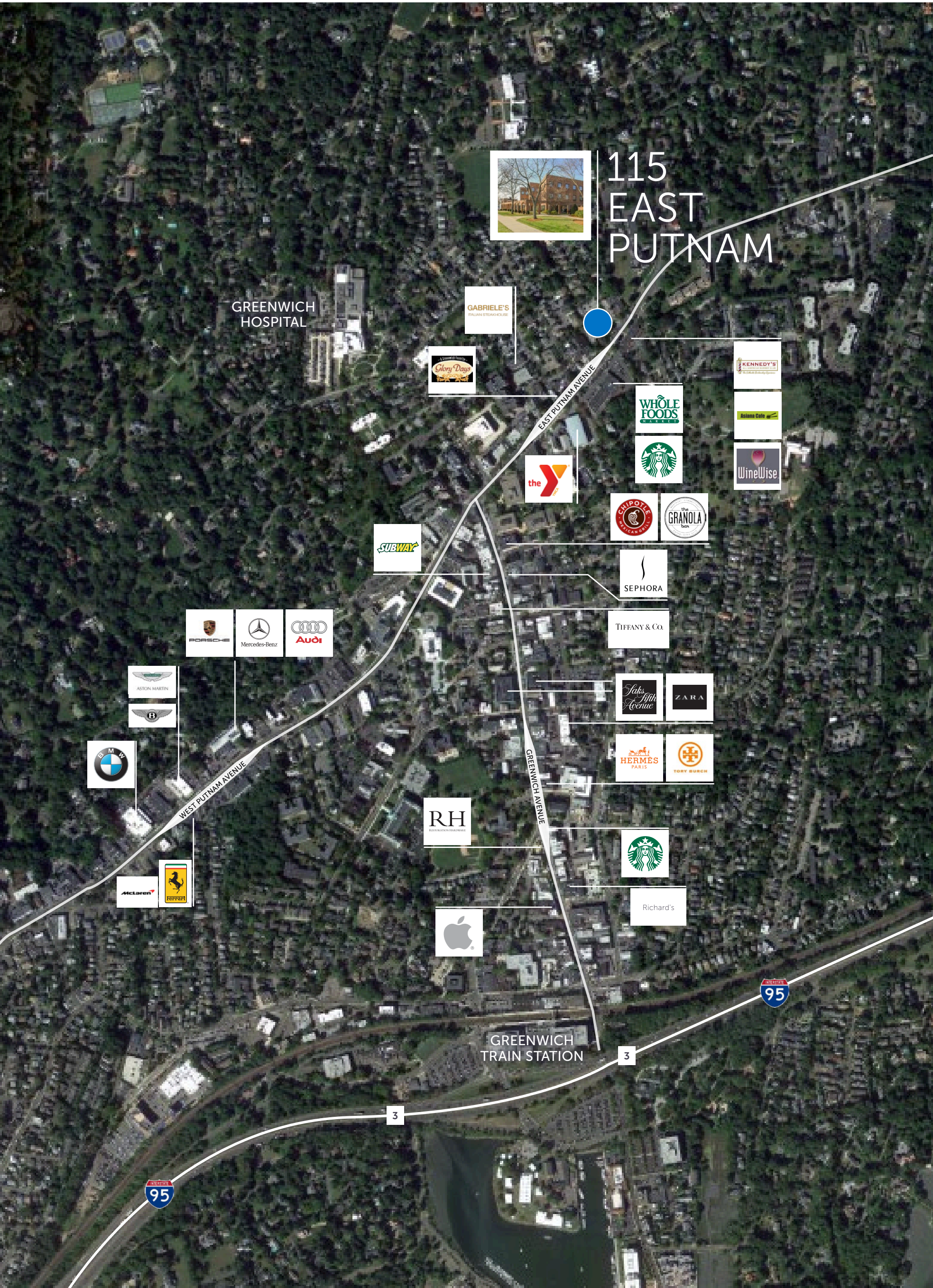
Retail/Medical	1st Floor	2,755 RSF & 2,600 RSF (contiguous)
Office Space	2nd Floor	4,659 RSF
	3rd Floor	10,500 RSF (divisible)
Rent	\$62.50 gross + electric	
Availability	Immediately	
Parking	3/1,000 SF	

RHYS

RHYS disclaims any warranty of any kind, expressed or implied, as to any matter whatsoever relating to this service. In no event shall RHYS be liable for any indirect, special, incidental or consequential damages arising out of any use of or reliance on any content or information contained herein.

115 EAST PUTNAM AVENUE

MARKET AERIAL



RHYS disclaims any warranty of any kind, expressed or implied, as to any matter whatsoever relating to this service. In no event shall RHYS be liable for any indirect, special, incidental or consequential damages arising out of any use of or reliance on any content or information contained herein.

115 EAST PUTNAM AVE

AERIAL



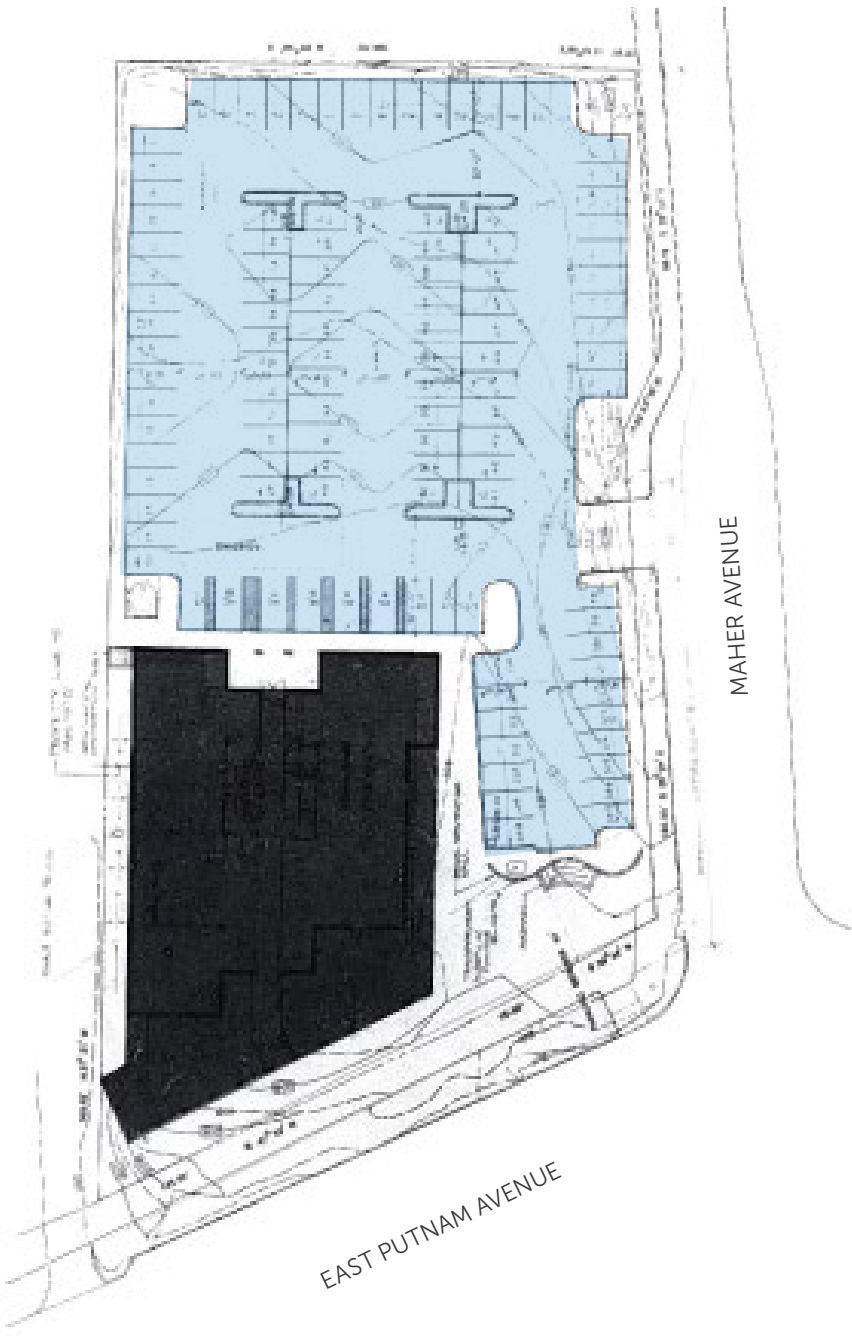
RHYS

RHYS disclaims any warranty of any kind, expressed or implied, as to any matter whatsoever relating to this service. In no event shall RHYS be liable for any indirect, special, incidental or consequential damages arising out of any use of or reliance on any content or information contained herein.

115 EAST PUTNAM AVE

SITE PLAN

Dedicated Parking

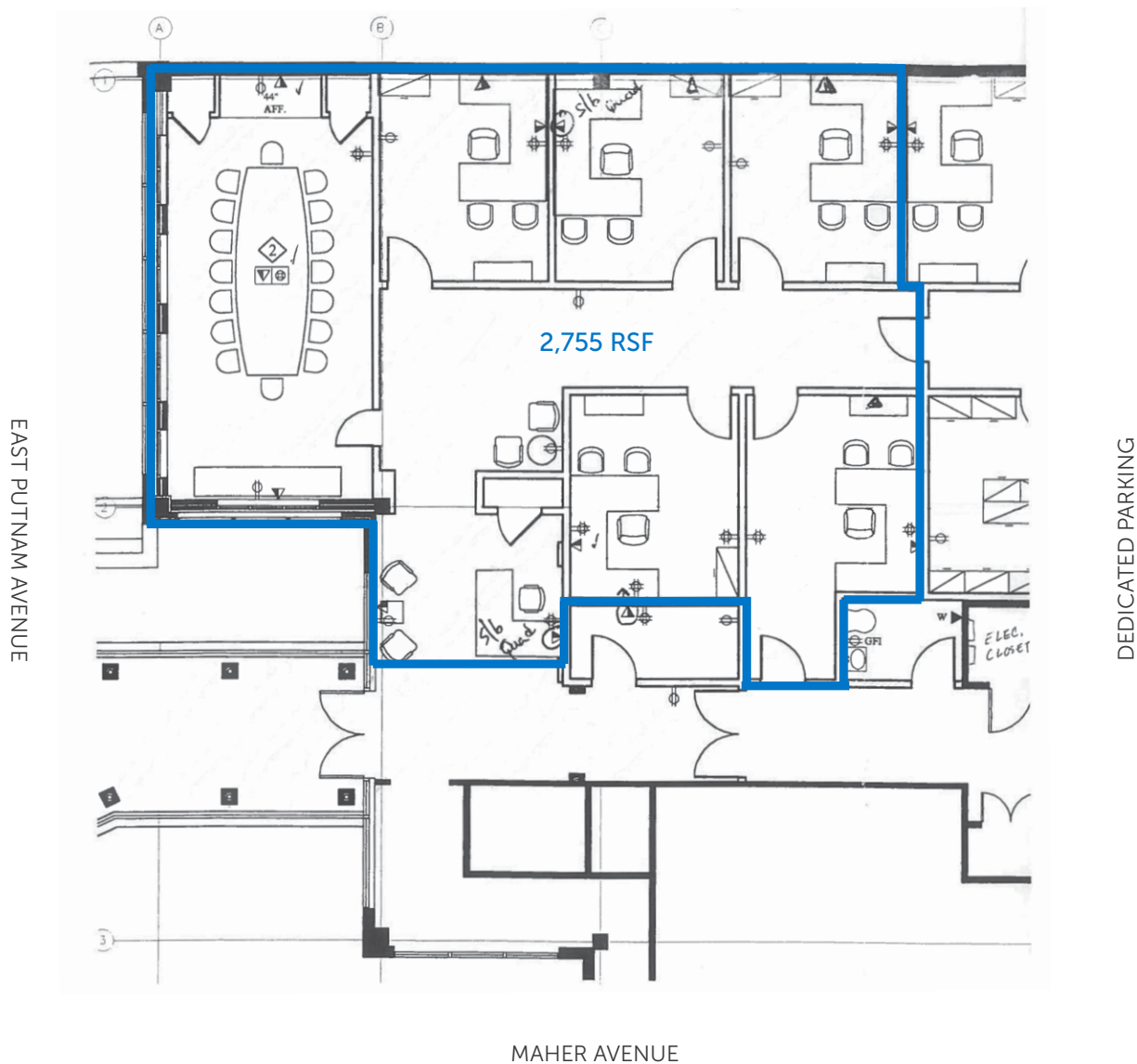


RHYS disclaims any warranty of any kind, expressed or implied, as to any matter whatsoever relating to this service. In no event shall RHYS be liable for any indirect, special, incidental or consequential damages arising out of any use of or reliance on any content or information contained herein.

115 EAST PUTNAM AVE

1ST FLOOR
FLOOR PLAN

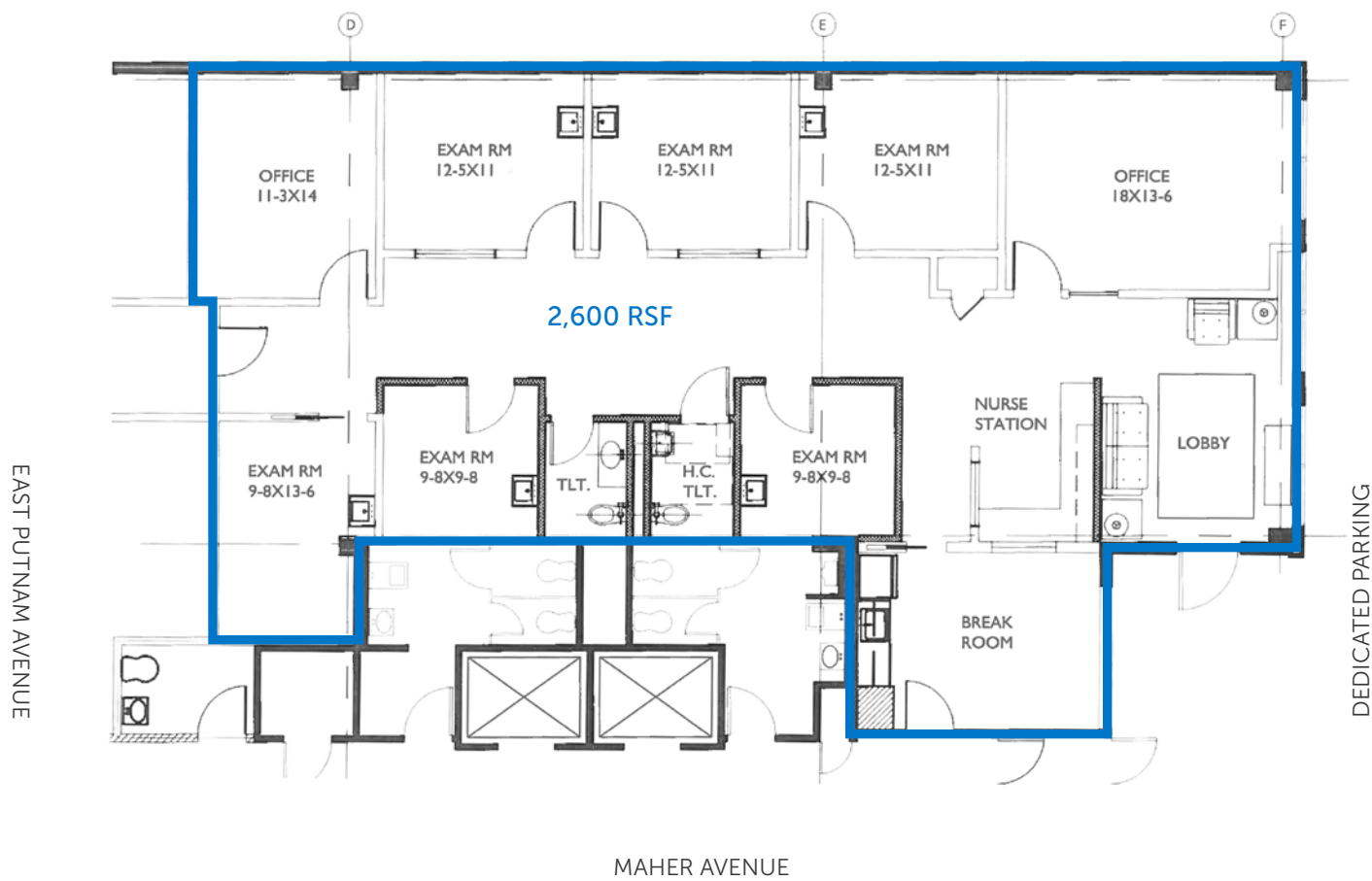
As-Built Configuration



115 EAST PUTNAM AVE

1ST FLOOR
FLOOR PLAN

As-Built Configuration

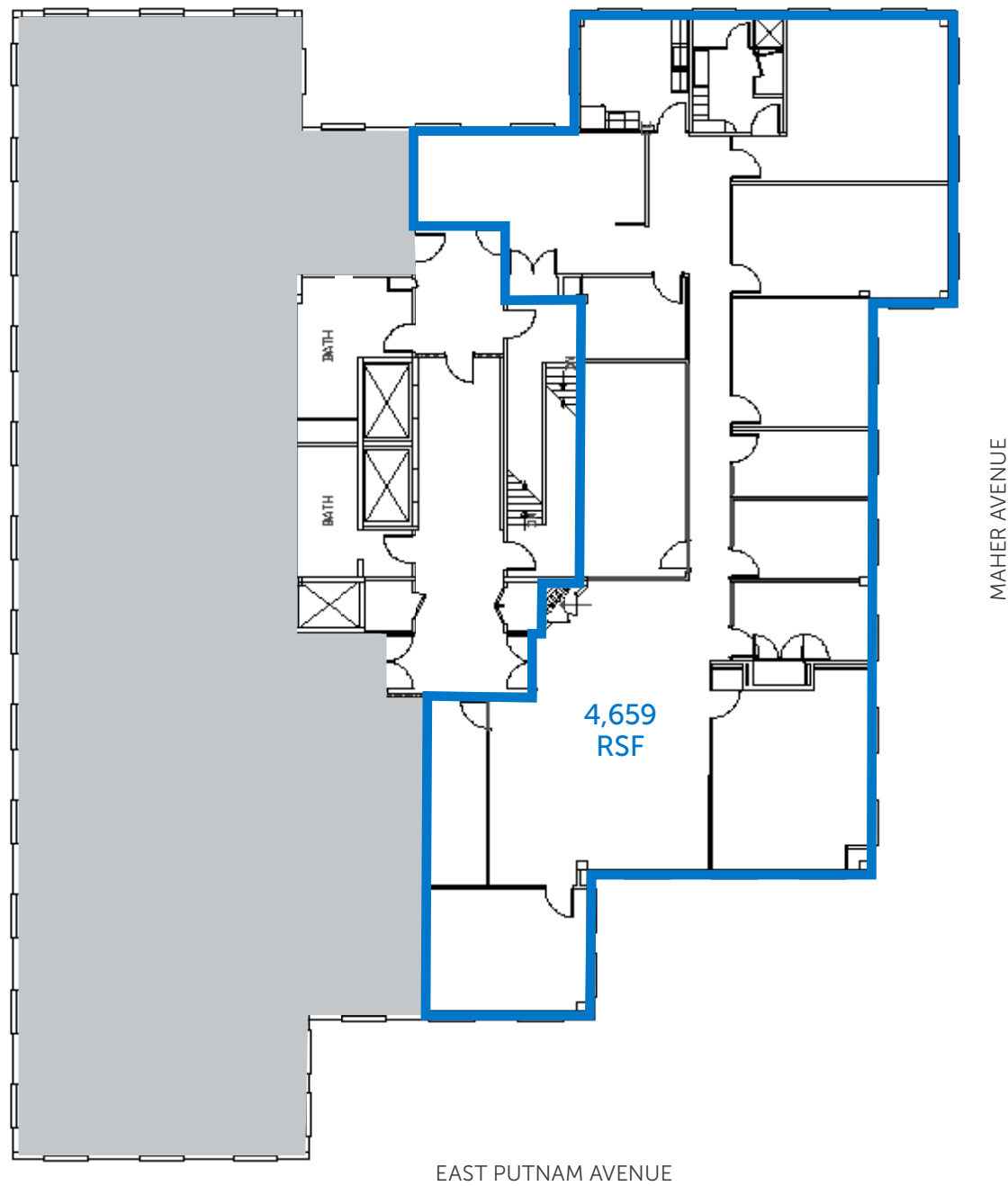


115 EAST PUTNAM AVE

2ND FLOOR
FLOOR PLAN

As-Built Configuration

DEDICATED PARKING



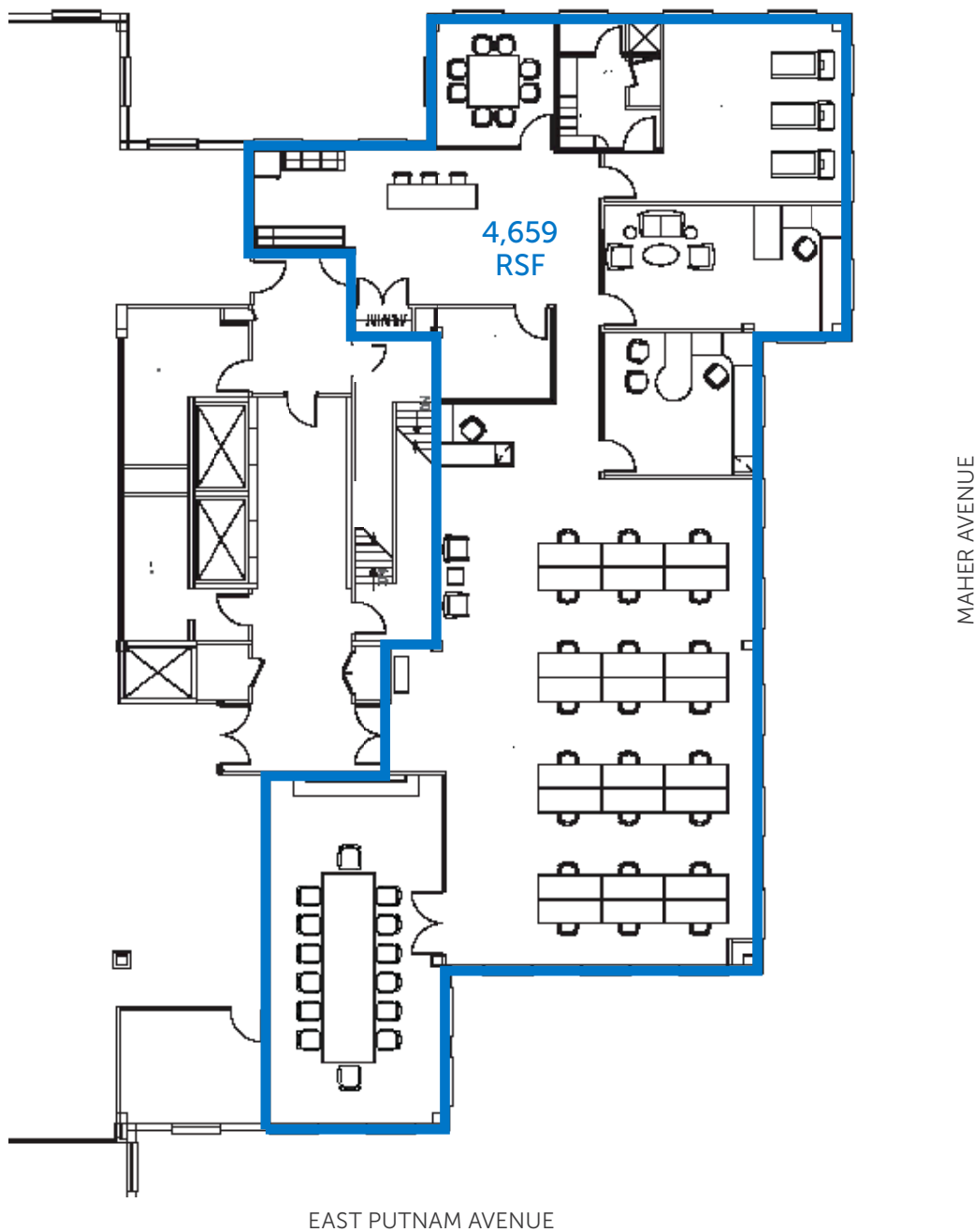
RHYS disclaims any warranty of any kind, expressed or implied, as to any matter whatsoever relating to this service. In no event shall RHYS be liable for any indirect, special, incidental or consequential damages arising out of any use of or reliance on any content or information contained herein.

115 EAST PUTNAM AVE

2ND FLOOR
FLOOR PLAN

Conceptual Plan

DEDICATED PARKING



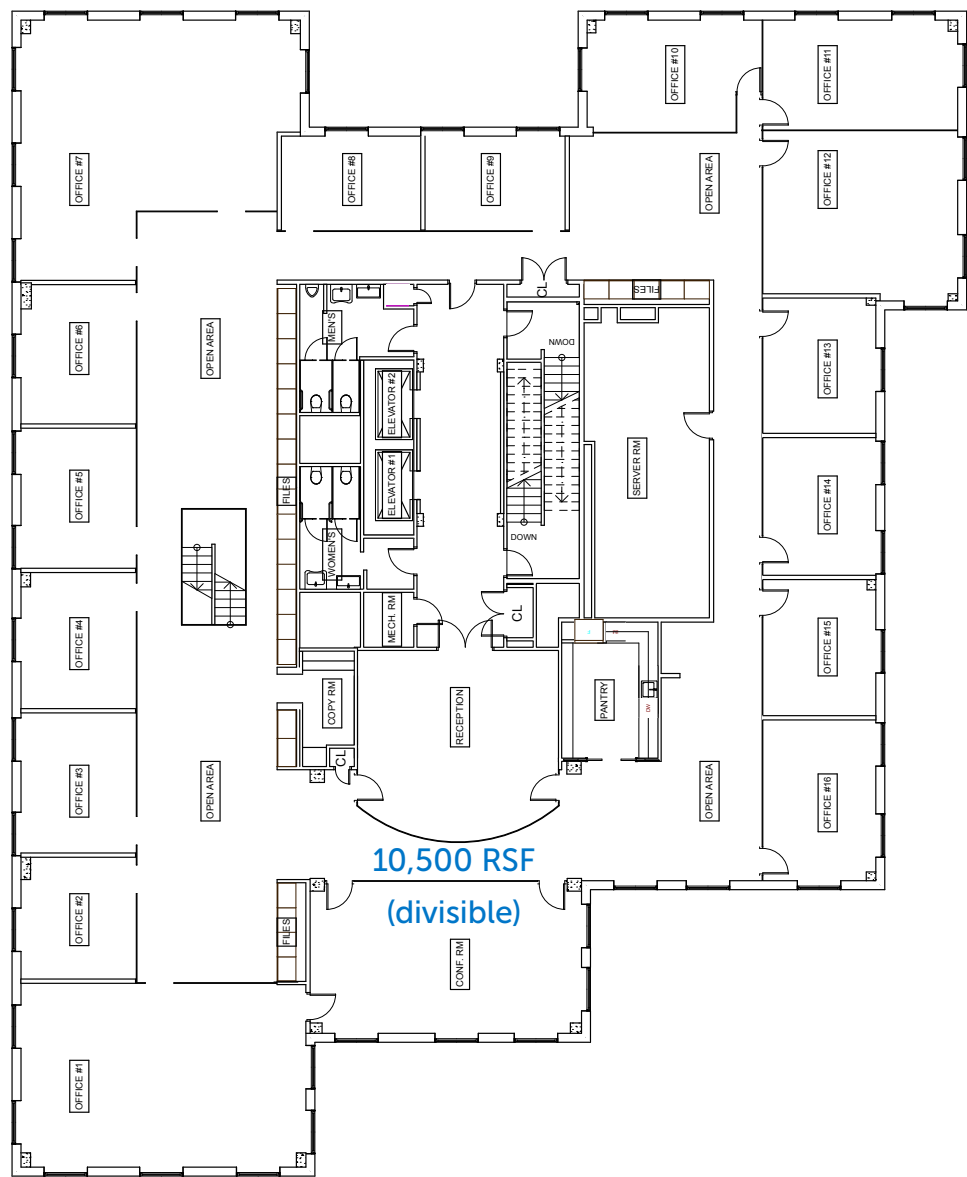
RHYS disclaims any warranty of any kind, expressed or implied, as to any matter whatsoever relating to this service. In no event shall RHYS be liable for any indirect, special, incidental or consequential damages arising out of any use of or reliance on any content or information contained herein.

115 EAST PUTNAM AVE

3RD FLOOR
FLOOR PLAN

As-Built Configuration

DEDICATED PARKING



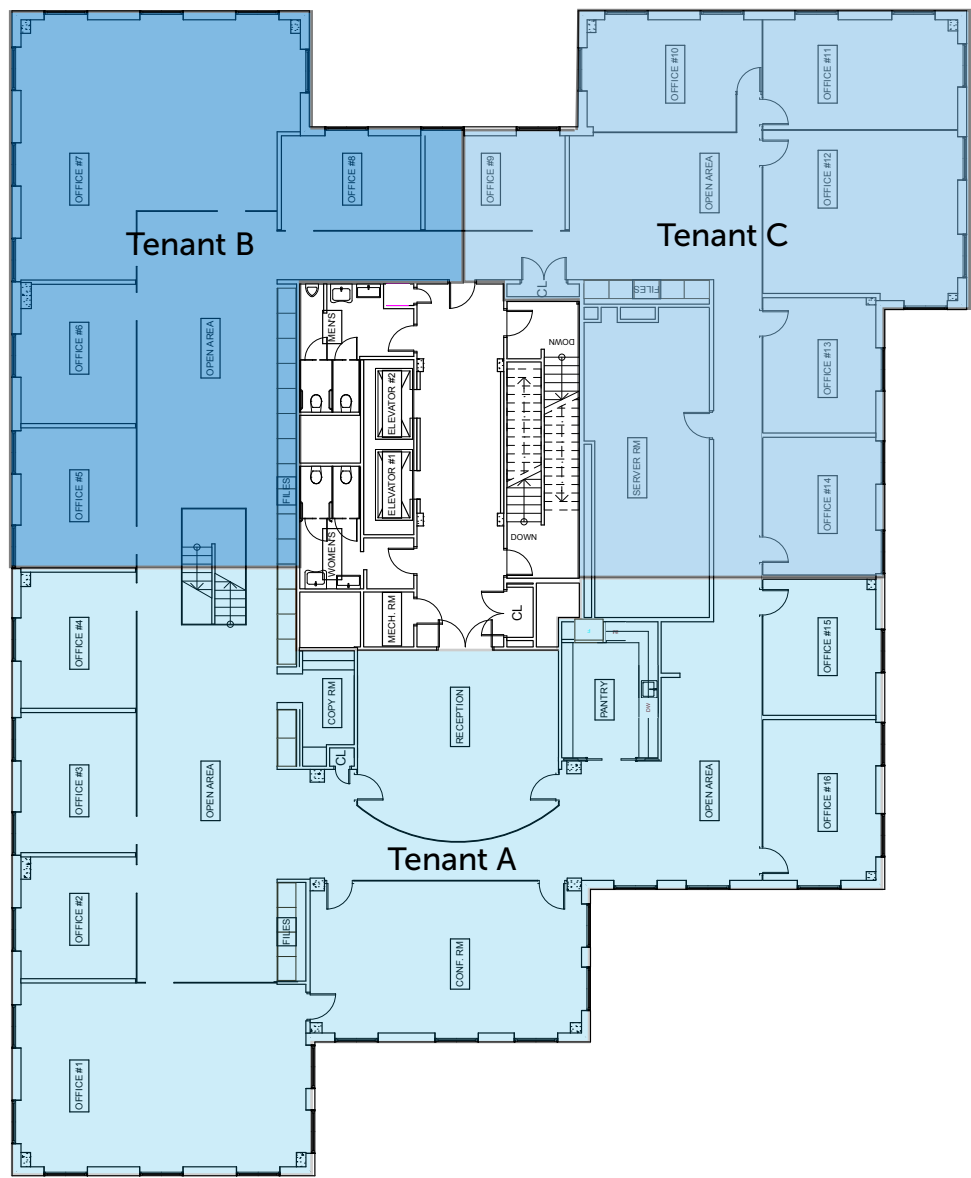
EAST PUTNAM AVENUE



RHYS disclaims any warranty of any kind, expressed or implied, as to any matter whatsoever relating to this service. In no event shall RHYS be liable for any indirect, special, incidental or consequential damages arising out of any use of or reliance on any content or information contained herein.

Potential Subdivision Configuration

DEDICATED PARKING



MAHER AVENUE

EAST PUTNAM AVENUE

115 EAST PUTNAM AVE

INTERIOR



RHYS

RHYS disclaims any warranty of any kind, expressed or implied, as to any matter whatsoever relating to this service. In no event shall RHYS be liable for any indirect, special, incidental or consequential damages arising out of any use of or reliance on any content or information contained herein.