

# 3624 W. CENTREPOINT FOR LEASE



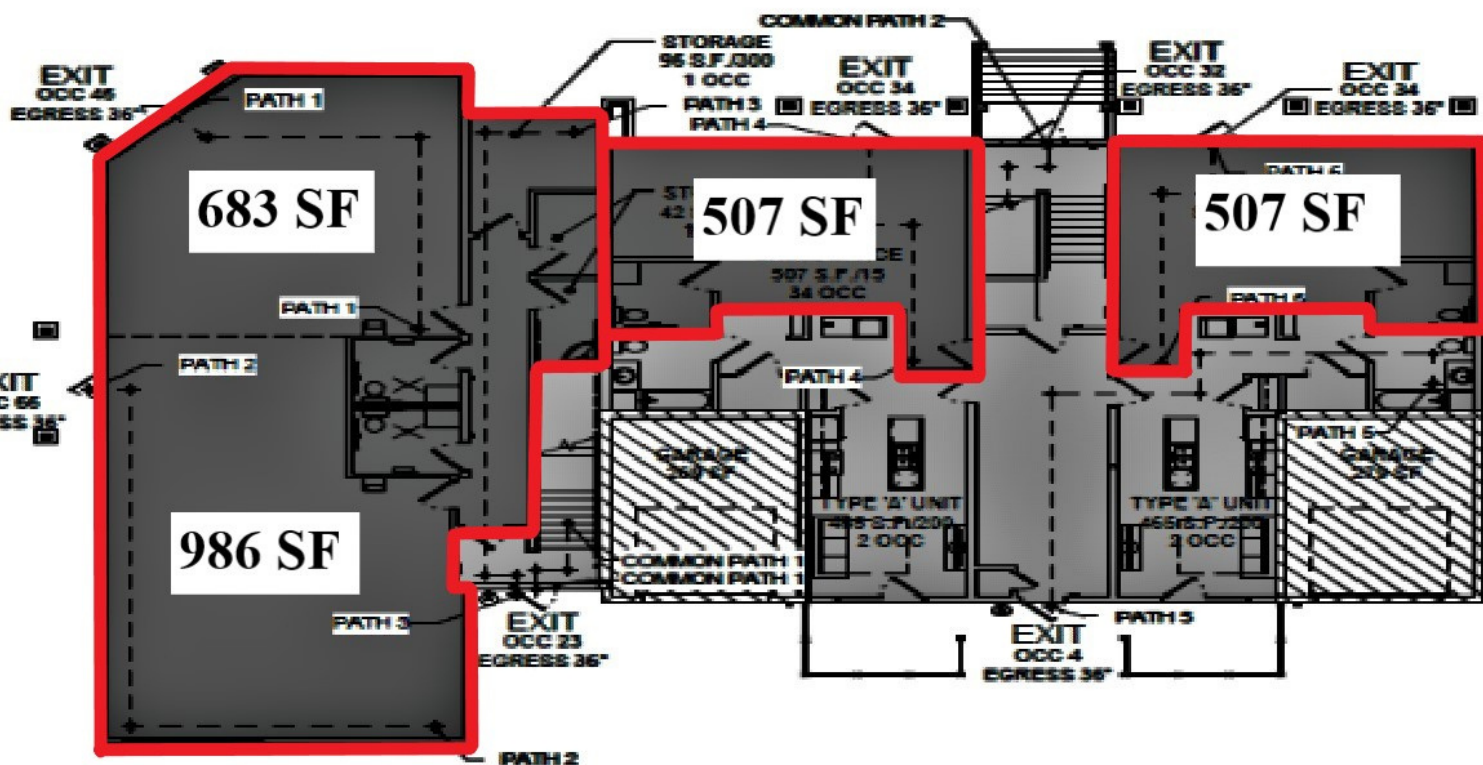
**Newly Completed Mixed Use located in the heart of Meridian. "The Brickyard" Multi-Family Development offers walkability to all the amenities in the Centrepoint Retail Center, two larger units may be combined for a Restaurant or Coffee Shop. Sand and Grease trap is installed in Unit 120 and can be extended into Unit 130, 12- Multi-Family units sit above the available Commercial Units.**

Silvercreek

**R O B N E T T**  
P R O P E R T I E S

**Devan Robnett**  
**(208) 577-8063**

# Floor Plan & Vicinity Map



# Property Photos



Silvercreek  
REALTY GROUP

ROBNETT  
P R O P E R T I E S

Devan Robnett  
(208) 577-8063