

FOR LEASE CHILDCARE FACILITY



257 Lafayette Ave
5,200 SF
+ Outdoor Play Area



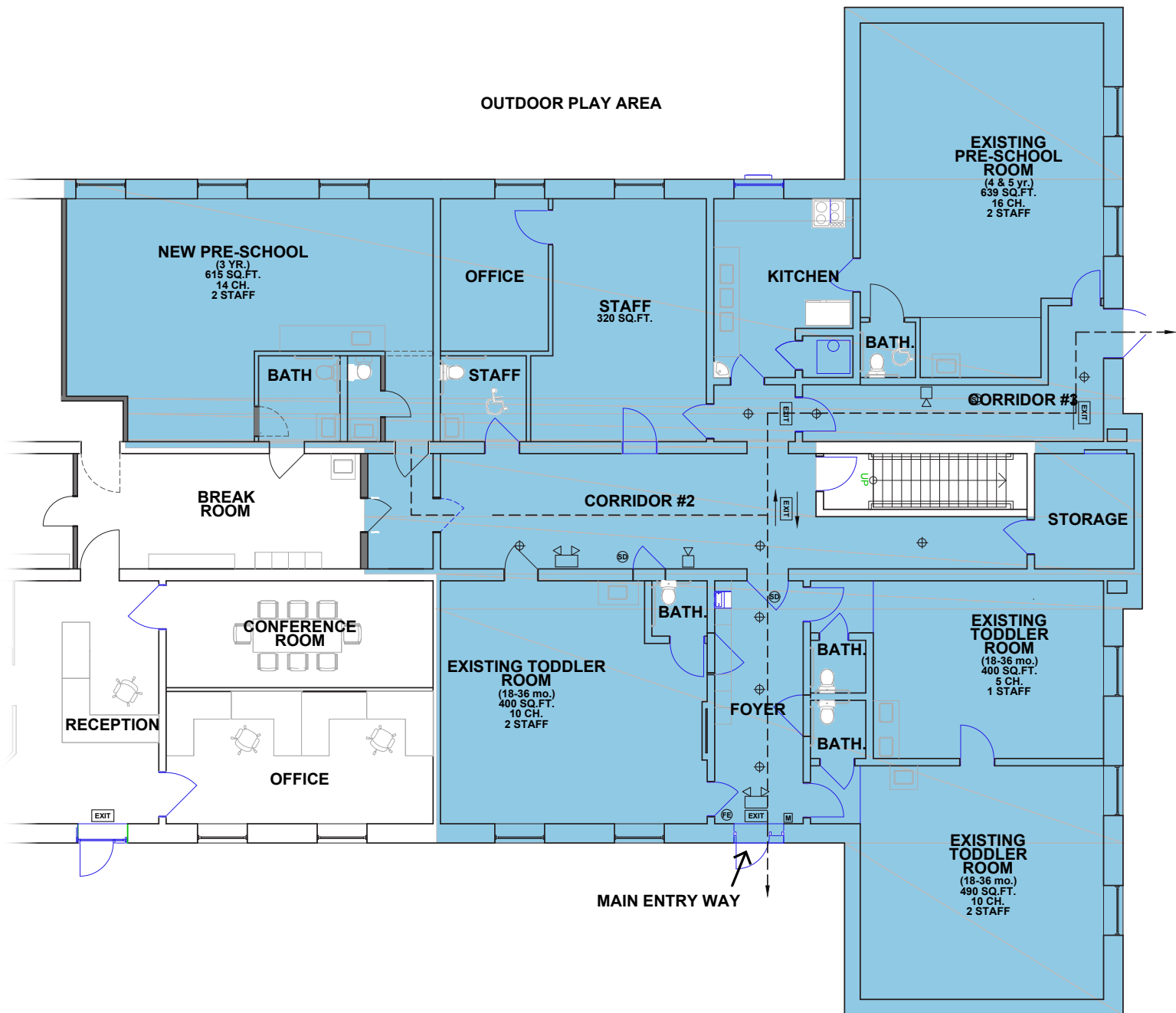
Matt Hartrich
matth@schneiderservices.com



SCHNEIDER
REAL ESTATE SERVICES

716-983-4789
schneider-re.com

FLOOR PLAN



Long-time childcare center in Elmwood Village area available for lease. Prior to closing, the daycare was recently relicensed (September 2023), and approved for 25 toddlers and 30 preschool age children.

Space features (5) childcare rooms with individual restrooms and sinks, a kitchen with hood/fire suppression system, an office and administration area, and plenty of storage. Space also includes a very large outdoor play area, some parking, and a pull-in/drop off area.

PHOTOS



PHOTOS

