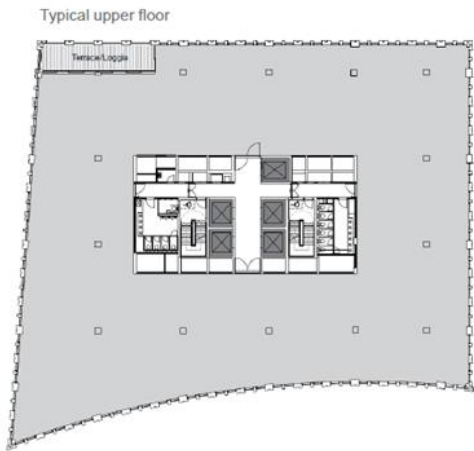


1 Wood Crescent, Wood Lane, White City



Building CGI



Proposed Floor Layout

AVAILABILITY

Floor	Size (sq ft)	Size (sq m)	Use
9 th	4,528 (u/o)	420.7	Office
8 th	7,047 (u/o)	654.7	Office
7 th	7,072 (u/o)	657.0	Office
6 th	13,404 (u/o)	1245.3	Office
5 th	13,404 (u/o)	1245.3	Office
4 th	14,132 (u/o)	1312.9	Office
3 rd	14,810	1375.9	Office
2 nd	14,810	1375.9	Office
1 st	13,461	1250.6	Office
Ground	2,774	257.7	
Basement	3,333	309.6	
Total	108,775	10,105.5	

OVERVIEW

Developer: Mitsui Fudosan & AIMCO, Stanhope

Total size: 108,775 sq ft

Architect: Duggan Morris

Agents: Knight Frank / Cushman Wakefield

CONDITION AND TIMING

Planning status: Consented

Completion date: Q1 2022

COMMENTS / SPECIFICATION

- Mixed use redevelopment - awaiting detailed specification
- Raised floors
- Contemporary finish
- Air conditioning
- Commissionaire
- Cycle & Shower facilities