



BEYOND POWERED SHELL

Goodman FRA 02 Data Centre
Rathenaustraße 31, 63263 Neu-Isenburg, Germany



Content

01 LOCATION

02 BUILDING

03 SUSTAINABILITY

Enabler of the digital economy

The world is becoming increasingly interconnected. Data is the lifeblood that pushes the digital economy forward. At Goodman, we want to facilitate that growth by doing what we do best: developing innovative and sustainable data centres at core locations for the world's largest operators and cloud providers. Our new Goodman FRA O2 Data Centre ticks all the boxes. Located in the heart of Europe, it's a purposebuilt data centre shell, soon to be fully permitted and powered.

Up to 54MW IT

campus

100MVA

available capacity

6+

on-net fibre providers

50,000 sqm

plot size



Frankfurt market

The Goodman FRA 02 Data Centre lies within the Frankfurt East Cluster, 9 kilometres from Hanauer Landstrasse and DE-CIX, right at the heart of the largest internet traffic hub in Europe. This guarantees a low-latency connection and a secure IT environment.

Address
Rathenaustraße 31, 63263 Neu-Isenburg, Germany

Located next to
Frankfurt

9 km to
Hanauer Landstrasse data centre cluster (DE-CIX)

7 km to
Frankfurt city centre

[ONLINE MAP](#)





BUILT TO BLEND IN

The Goodman FRA 02 Data Centre was designed to blend in naturally with its surroundings. Whether it's the sleek architectural lines, the green facades or the abundance of greenery across the site, the building is set to bring a whole new dynamic to the environment, in full harmony with the landscape.

54 MW IT campus*

More than a shell

Total plot: approx. 50,000 sqm

The Goodman FRA 02 data Centre includes two buildings with a separate entrance, an office area, a technical equipment room and mechanical/power yard. Each block consists of two floors with 3 data halls with each hall totalling around 1,280 sqm.

Block A: 27 MW IT

+ 6 x 4.50 MW IT modules.

Block B: 27 MW IT

+ 6 x 4.50 MW IT modules.

Electrical

- + Distributed redundancy or block redundancy (5+1)
- + Containerised solutions
- + Density: ± 3.5 kW/sqm.

Cooling

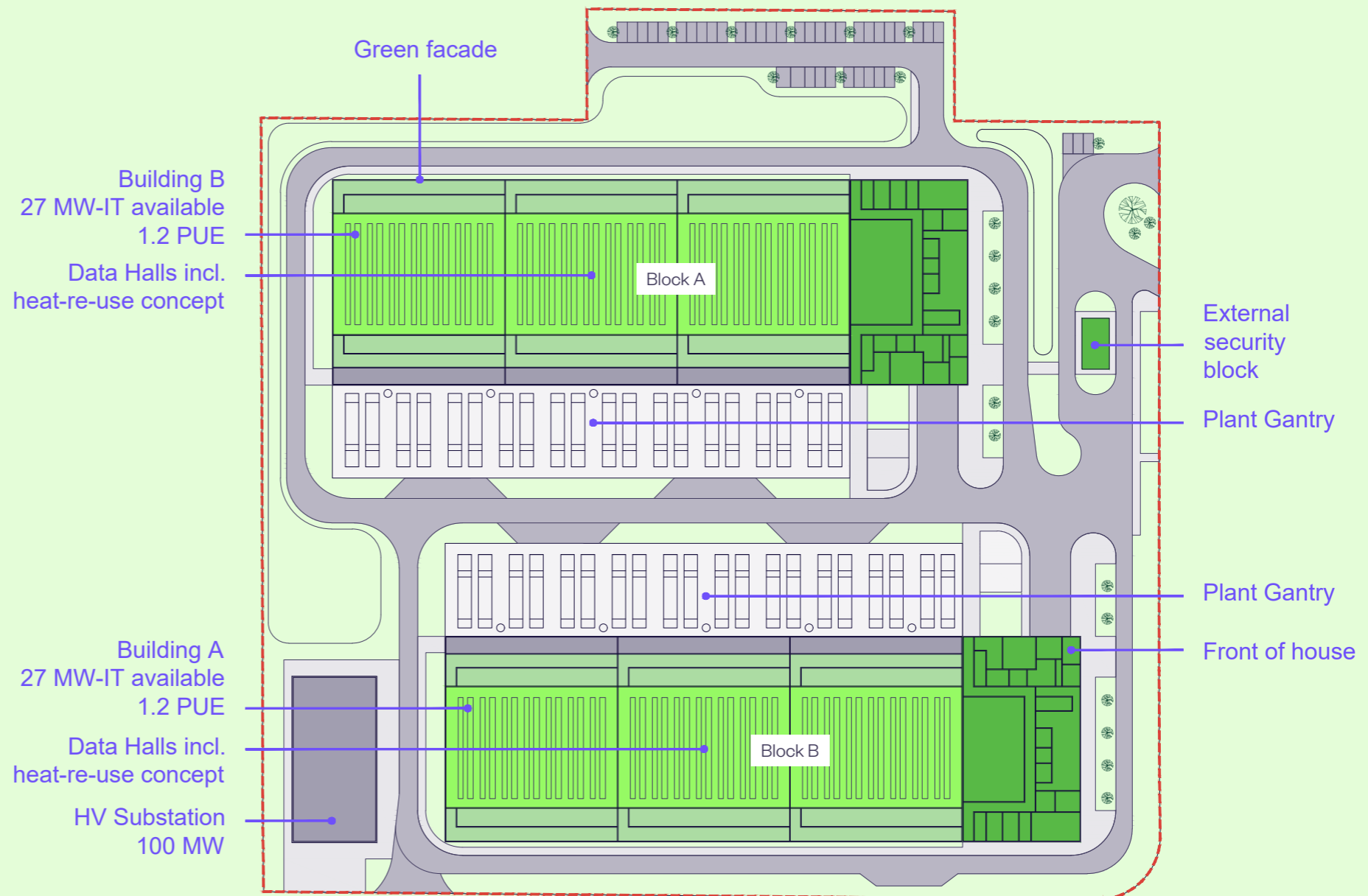
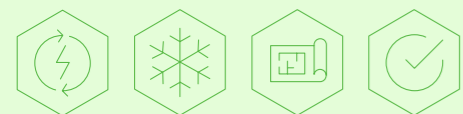
- + Air cooled chillers with free cooling (adiabatic cooling could be considered)
- + Hot aisle containment.

Structural

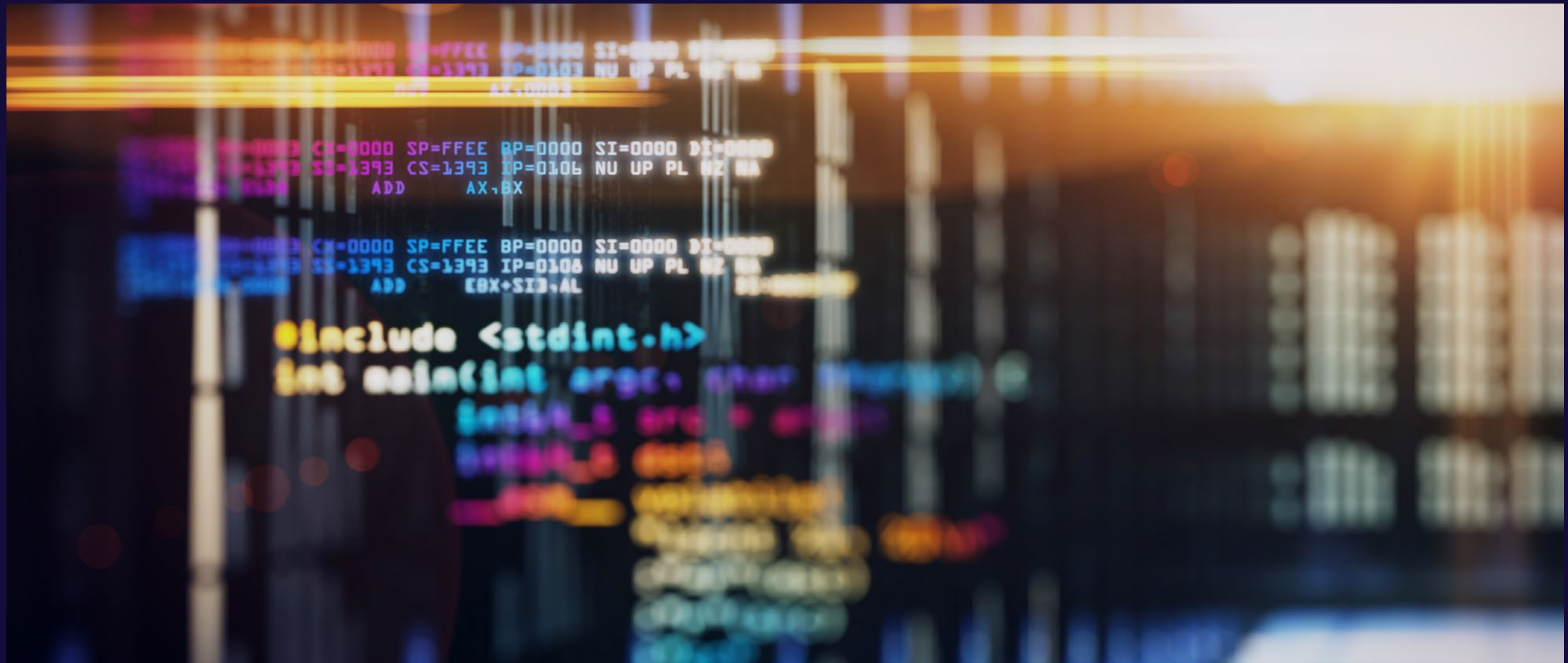
- + 6 m+ clear height
- + Floor loading capacity: up to 15kN/sqm.

Efficiency

- + Average PUE as low as ± 1.2 .



* Detailed design ongoing – fit-out is not part of Goodman scope.



A sustainable and future-proof data centre

We want our data centres to stand the test of time while at the same time keeping their impact on the environment to a minimum. That's why we focus heavily on sustainability features, both within the walls of our data centres and in the surrounding area. As industry leaders in sustainability commitment, we are uniquely positioned to partner with customers who have sustainability and green goals.

Recycling raw materials

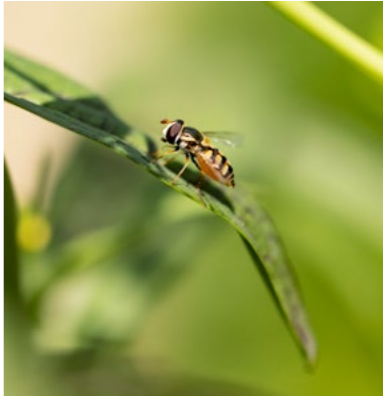


To restrict the environmental impact of our buildings, we exclusively work with contractors and suppliers who value sustainability as highly as we do. Reuse and recycling of materials are heavily encouraged.

One of such materials is concrete, which is reprocessed in new paving products.

Other materials we repurpose include pruning waste, old tiles and stones.

Nature inclusive design



In line with the Goodman values, the Goodman FRA 02 Data Centre will actively stimulate biodiversity and protect vulnerable species. Specific areas across the campus will be reserved for vegetation and small animals to thrive.

A variation of indigenous plants, flowers and shrubs provide ample food and shelter for small animals, such as birds, bees, frogs, rabbits and bats. Nesting spots, beehives, and all types of sheltered areas are included on-site.

Contact us

Peter-Müller-Straße 10,
40468 Düsseldorf, Germany

Lukas Freudl
lukas.freudl@goodman.com

+49 173 424 98 58

Matthieu Wiczorek
matthieu.wiczorek@goodman.com

+32 485 977 326

Dirk Mölter
dirk.moelter@goodman.com

+49 172 735 96 37



Goodman Group is an integrated property group with operations throughout Australia, New Zealand, Asia, Europe, the United Kingdom, and the Americas. Goodman Group, comprised of the stapled entities Goodman Limited, Goodman Industrial Trust and Goodman Logistics (HK) Limited, is the largest industrial property group listed on the Australian Securities Exchange (ASX: GMG) and one of the largest listed specialist investment managers of industrial property and business space globally.

Goodman's specialist global industrial property expertise, integrated own+develop+manage customer service offering and significant investment management platform, delivers essential infrastructure for the digital economy. Goodman helps create sustainable and innovative property solutions that meet the individual requirements of its customers, while seeking to deliver long-term returns for investors. For more information visit: www.goodman.com

This document has been prepared by the Goodman Group for general information purposes only. Whilst every care has been taken in relation to its accuracy, no warranty of accuracy is given or implied. Images used in this document have been included for the purposes of enabling you to visualise the development concepts. Further, you should obtain your own independent advice before making any decisions about any of the products and/or properties referred to in this document.